

Stainless steel fittings

Elbows

CONDUIT

UL File No. E-324286



RCOND50 304SS



Features:

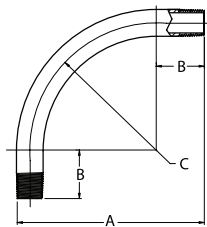
- Stainless steel threaded conduit polished to a bright finish to further increase corrosion resistance and provide enhanced aesthetic appearance
- Provided in 10' lengths with coupling attached and color-coded thread protector for the opposite end
- Custom sizes are also available

Cat. #	Size	Unit qty.	Std. pkg.	Wt. lbs. per 100	Threads	ID	OD	Wall thickness	Length without coupling	Est. wt. per foot (lbs.)
RCOND50 304SS	1/2"	1	1	85	14"	0.622"	0.840"	0.104"	9' 11 1/4"	0.85
RCOND75 304SS	3/4"	1	1	113	14"	0.824"	1.050"	0.107"	9' 11 1/4"	1.13
RCOND100 304SS	1"	1	1	168	11 1/2"	1.049"	1.310"	0.126"	9' 11"	1.68
RCOND125 304SS	1 1/4"	1	1	263	11 1/2"	1.380"	1.660"	0.140"	9' 11"	2.72
RCOND150 304SS	1 1/2"	1	1	272	11 1/2"	1.610"	1.900"	0.138"	9' 11"	2.72
RCOND200 304SS	2"	1	1	365	11 1/2"	2.067"	2.370"	0.146"	9' 11"	3.65
RCOND250 304SS	2 1/2"	1	1	5500	8"	2.469"	2.870"	0.193"	9' 10 1/2"	—
RCOND300 304SS	3"	1	1	7200	8"	3.068"	3.500"	0.205"	9' 10 1/2"	—
RCOND400 304SS	4"	1	1	10000	8"	4.026"	4.500"	0.225"	9' 10 1/4"	—
RCOND50 316SS	1/2"	1	1	85	14"	0.622"	0.840"	0.104"	9' 11 1/4"	0.85
RCOND75 316SS	3/4"	1	1	113	14"	0.824"	1.050"	0.107"	9' 11 1/4"	1.13
RCOND100 316SS	1"	1	1	168	11 1/2"	1.049"	1.310"	0.126"	9' 11"	1.68
RCOND125 316SS	1 1/4"	1	1	263	11 1/2"	1.380"	1.660"	0.140"	9' 11"	2.72
RCOND150 316SS	1 1/2"	1	1	272	11 1/2"	1.610"	1.900"	0.138"	9' 11"	2.72
RCOND200 316SS	2"	1	1	365	11 1/2"	2.067"	2.370"	0.146"	9' 11"	3.65
RCOND250 316SS	2 1/2"	1	1	5500	8"	2.469"	2.870"	0.193"	9' 10 1/2"	—
RCOND300 316SS	3"	1	1	7200	8"	3.068"	3.500"	0.205"	9' 10 1/2"	—
RCOND400 316SS	4"	1	1	10000	8"	4.026"	4.500"	0.225"	9' 10 1/4"	—

STANDARD RADIUS ELBOWS



RLB5090 304SS



Features:

- Designed for use with stainless threaded rigid conduit
- These stainless steel elbows are polished to a bright finish for increased corrosion resistance and improved appearance

Cat. #	Size	Unit qty.	Std. pkg.	Wt. lbs. per 100	Radius C	Offset A	Straight end B
RLB5090 304SS	1/2"	1	1	76	4.00"	6.50"	2.12"
RLB7590 304SS	3/4"	1	1	109	4.50"	7.25"	2.75"
RLB10090 304SS	1"	1	1	188	5.75"	8.63"	2.88"
RLB12590 304SS	1 1/4"	1	1	310	7.50"	10.75"	3.25"
RLB15090 304SS	1 1/2"	1	1	422	8.25"	11.63"	3.38"
RLB20090 304SS	2"	1	1	611	9.50"	13.31"	3.81"
RLB25090 304SS	2 1/2"	1	1	611	10.50"	16.50"	5.75"
RLB30090 304SS	3"	1	1	611	13.00"	18.75"	5.79"
RLB40090 304SS	4"	1	1	611	16.00"	23.18"	7.96"
RLB5090 316SS	1/2"	1	1	76	4.00"	6.50"	2.12"
RLB7590 316SS	3/4"	1	1	109	4.50"	7.25"	2.75"
RLB10090 316SS	1"	1	1	188	5.75"	8.63"	2.88"
RLB12590 316SS	1 1/4"	1	1	310	7.50"	10.75"	3.25"
RLB15090 316SS	1 1/2"	1	1	422	8.25"	11.63"	3.38"
RLB20090 316SS	2"	1	1	611	9.50"	13.31"	3.81"
RLB25090 316SS	2 1/2"	1	1	611	10.50"	16.50"	5.75"
RLB30090 316SS	3"	1	1	611	13.00"	18.75"	5.79"
RLB40090 316SS	4"	1	1	611	16.00"	23.18"	7.96"

Stainless steel