

# Extra duty while-in-use covers

## FOR ONE & TWO GANG BOXES

### ONE & TWO GANG SELF-CLOSING UL & cULus LISTED

While-in-use covers offer a rugged, versatile design that protects against various elements such as rain, snow and ice. They are available in gray and white; single gang, single gang deep and double gang. They are great for use with vending machines, holiday lighting, portable signs, outdoor lighting, outdoor hot tubs and more.

#### Features:

- Meets NEC® 2014 406.9 (B)(1) extra duty requirement for any application
- Rugged UV-resistant polycarbonate cover and back protects devices without cracking or breaking and is non-corrosive
- Self-closing padlockable cover
- One gang box includes three inserts for eight different configurations
- Two gang box includes three inserts for over 60 different configurations
- Box inserts accommodate decorator and GFCI devices, duplex receptacles and a variety of single receptacle sizes and toggle switches
- Single receptacle sizes include:
  - One gang: 1¼", 1⅜", 1⅝", 1¾", 2⅛"
  - Two gang: 1¼", 1⅜", 1⅝", 1¾"
- Cover cord opening fits #12 AWG or lighter cord
- Excellent for food and beverage wash down environments where NEMA 3R is sufficient
- Box cover includes pre-mounted gasket

#### Certifications and compliances:

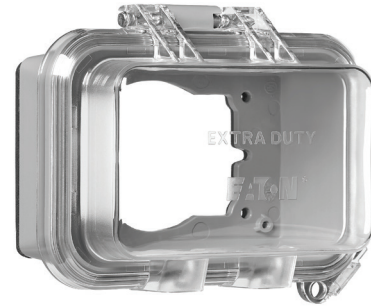
- cULus Listed to UL514D
- UL File No. E-102328
- NEMA 3R

#### Standard materials:

- Clear cover, body and cover plates – polycarbonate
- Gasket – ethylene vinyl acetate (EVA)
- Hinge pin – stainless steel

Cat. #	Gang	Mounting description	Color	Depth
TP7488XD	1	Horizontal	Gray	3¼"
TP7488XDW	1	Horizontal	White	3¼"
TP7487XD	1	Vertical	Gray	3¼"
TP7487XDW	1	Vertical	White	3¼"
TP7489XD	2	Vertical	Gray	3¼"
TP7489XDW	2	Vertical	White	3¼"

#### Color information:



TP7488XD



TP7487XD



TP7489XD



Weatherproof