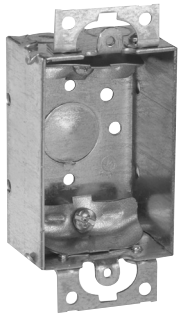


# Steel switch boxes

**1½" DEEP – NON-GANGABLE – 7.5 CUBIC INCH CAPACITY**

**2" WIDE x 3" LONG**

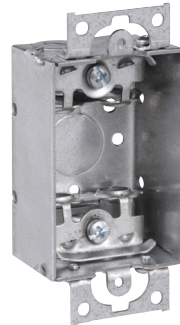
**UL LISTED**



TP100



TP104



TP106



TP114

Cat. #	Bracket	Ears	Knockouts			Unit qty.	Wt. lbs. per 100
			Each end	Each side	Bottom		
<b>For non-metallic cable – clamps in each end</b>							
TP100	-	Yes	2 - cable	-	1 - ½"	50	43
TP100G <sup>F</sup>	-	Yes	2 - cable	-	1 - ½"	50	43
TP104	"S", Set ½"	-	2 - cable	-	1 - ½"	50	50
<b>For armored &amp; metal-clad (MCI) cable – clamps in each end</b>							
TP106 <sup>A</sup>	-	Yes	2 - cable	-	1 - ½"	50	44
<b>For conduit – no clamps, flush device</b>							
TP114	-	Yes	1 - ½"	-	1 - ½"	50	39

<sup>A</sup>UL approved for use with aluminum interlocking grounding metal-clad cable, Type MCIA (Southwire MCAP™).

MCAP™ is a registered trademark of Southwire Company.

<sup>F</sup>CSA certified. G indicates ground screw installed.

# Steel switch boxes

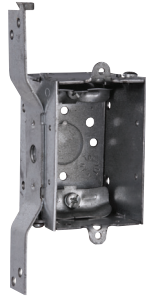
**2" DEEP – GANGABLE – 10.0 CUBIC INCH CAPACITY**

**2" WIDE x 3" LONG**

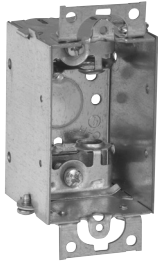
**UL LISTED**



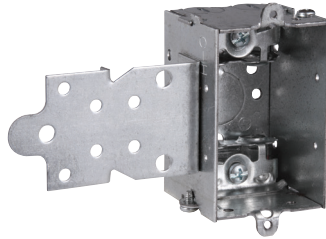
**TP116**



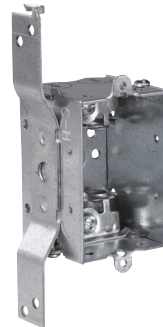
**TP118**



**TP120**



**TP123**



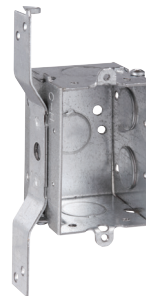
**TP124**



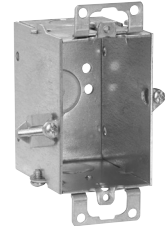
**TP126**



**TP130**



**TP132**



**TP131 Hold-tite**

Steel boxes

Cat. #	Bracket	Ears	Knockouts			Unit qty.	Wt. lbs. per 100
			Each end	Each side	Bottom		
<b>For non-metallic cable – clamps in each end</b>							
TP116	-	Yes	2 - cable	-	1 - 1/2"	50	53
TP118	"S", set 5/8"	-	2 - cable	-	1 - 1/2"	50	60
<b>For armored &amp; metal-clad (MCI) cable – clamps in each end</b>							
TP120 <sup>A</sup>	-	Yes	2 - cable	-	1 - 1/2"	50	54
TP123 <sup>A</sup>	"F", set 1/2"	-	2 - cable	-	1 - 1/2"	50	63
TP124 <sup>A</sup>	"S", set 5/8"	-	2 - cable	-	1 - 1/2"	50	61
<b>For conduit – no clamps, flush device</b>							
TP126	-	-	1 - 1/2"	2 - 1/2"	1 - 1/2"	50	47
TP130	-	Yes	1 - 1/2"	2 - 1/2"	1 - 1/2"	50	48
TP130G <sup>F</sup>	-	Yes	1 - 1/2"	2 - 1/2"	1 - 1/2"	50	48
TP132	"S", set 5/8"	-	1 - 1/2"	2 - 1/2", 1 Side	1 - 1/2"	50	58
TP132G <sup>F</sup>	"S", set 5/8"	-	1 - 1/2"	2 - 1/2", 1 side	1 - 1/2"	50	58
TP131	Hold-tite	Yes	1 - 1/2" - T	-	1 - 1/2"	50	52
TP131G <sup>F</sup>	Hold-tite	Yes	1 - 1/2" - T	-	1 - 1/2"	50	52

<sup>A</sup>UL approved for use with aluminum interlocking grounding metal-clad cable, Type MCIA (Southwire MCAP™). MCAP™ is a registered trademark of Southwire Company.

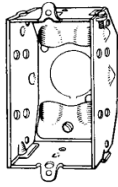
<sup>F</sup>CSA certified. G indicates ground screw installed.

# Steel switch boxes

## 2 1/4" DEEP – GANGABLE – BEVELED CORNERS – 10.5 CUBIC INCH CAPACITY

2" WIDE x 3" LONG

UL LISTED



TP134



TP137 Hold-tite



TP138

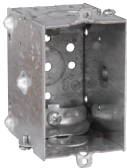
Cat. #	Description	Ears	Bumps	Knockouts			Unit qty.	Wt. lbs. per 100
				Each end	Each side	Bottom		
Clamp screws through beveled corners								
TP134	Gangable	-	Yes	2 - cable	-	1 - 1/2"	50	51
TP137	Gangable	Yes	-	2 - cable	-	1 - 1/2"	50	57
TP137G <sup>F</sup>	Gangable	Yes	-	2 - Cable	-	1 - 1/2"	50	57
TP138	Gangable	Yes	-	2 - cable	-	1 - 1/2"	50	55
TP138G <sup>F</sup>	Gangable	Yes	-	2 - Cable	-	1 - 1/2"	50	55

<sup>F</sup>CSA certified. G indicates ground screw installed.

## 2 1/2" DEEP – GANGABLE – 12.5 CUBIC INCH CAPACITY

2" WIDE x 3" LONG

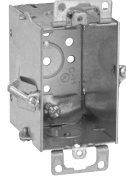
UL LISTED



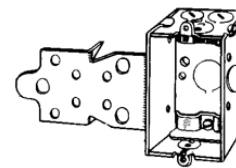
TP158



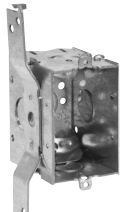
TP162



TP163



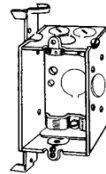
TP164, TP168



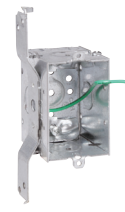
TP170



TP161



TP172



TP174



TP171

Cat. #	Bracket	Ears	Ground pigtail	Leveling bumps	Knockouts			Unit qty.	Wt. lbs. per 100
					Each end	Each side	Bottom		
For non-metallic cable – clamps in each end									
TP158	-	-	-	Yes	2 - cable, 1 - 1/2"	-	1 - 1/2"	50	59
TP115 <sup>G</sup>	-	Yes	Yes	-	2 - cable	1 - 1/2"	1 - 1/2"	50	63
TP161	Snap-in	Yes	-	-	2 - cable	1 - 1/2"	-	50	73
TP161G <sup>F</sup>	Snap-in	Yes	-	-	2 - cable	1 - 1/2"	-	50	73
TP162	-	Yes	-	-	2 - cable	1 - 1/2"	1 - 1/2"	50	62
TP162G <sup>F</sup>	-	Yes	-	-	2 - cable	1 - 1/2"	1 - 1/2"	50	62
TP163	Hold-tite	Yes	-	-	2 - cable	-	1 - 1/2"	50	65
TP163G <sup>F</sup>	Hold-tite	Yes	-	-	2 - cable	-	1 - 1/2"	50	65
TP164	"F", set 1/2"	-	-	-	2 - cable, 1 - 1/2"	1 - 1/2"	1 - 1/2"	50	71
TP164G <sup>F</sup>	"F", set 1/2"	-	-	-	2 - cable, 1 - 1/2"	1 - 1/2"	1 - 1/2"	50	71
TP168	"F", set 1/4"	-	-	-	2 - cable, 1 - 1/2"	1 - 1/2"	1 - 1/2"	50	71
TP168G <sup>F</sup>	"F", set 1/4"	-	-	-	2 - cable, 1 - 1/2"	1 - 1/2"	1 - 1/2"	50	71
TP170	"S", set 3/8"	-	-	-	2 - cable, 1 - 1/2"	1 - 1/2"	1 - 1/2"	50	69
TP172	"D", set 5/8"	-	-	-	2 - cable, 1 - 1/2"	1 - 1/2"	1 - 1/2"	50	70
TP174	"D", set 3/8"	-	Yes	-	2 - cable, 1 - 1/2"	1 - 1/2"	1 - 1/2"	50	71
TP171	"VP", set 1/2"	-	-	-	2 - cable, 1 - 1/2"	1 - 1/2"	1 - 1/2"	50	73
TP171G <sup>F</sup>	"VP", set 1/2"	-	-	-	2 - cable, 1 - 1/2"	1 - 1/2"	1 - 1/2"	50	73

<sup>G</sup>Not UL Listed.

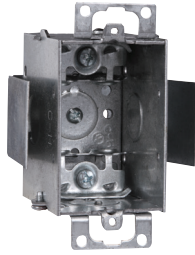
<sup>F</sup>CSA certified. G indicates ground screw installed.

# Steel switch boxes

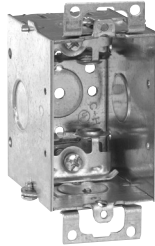
## 2 1/2" DEEP – GANGABLE – 12.5 CUBIC INCH CAPACITY

2" WIDE x 3" LONG FOR ARMORED & METAL-CLAD (MCI) CABLE – CLAMPS IN EACH END

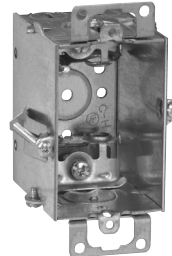
UL LISTED



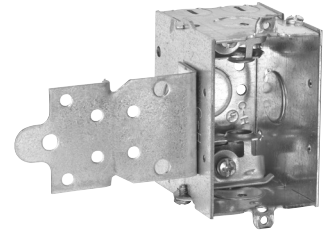
TP177



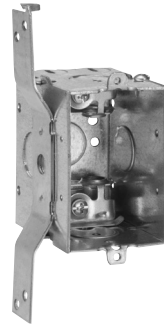
TP178



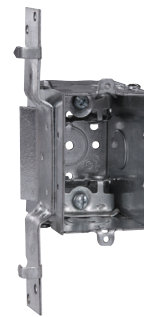
TP179 Hold-Tite



TP180



TP184



TP185

Cat. #	Bracket	Ears	Knockouts			Unit qty.	Wt. lbs. per 100
			Each end	Each side	Bottom		
TP177 <sup>A</sup>	Snap-in	Yes	2 - cable	1 - 1/2"	-	50	74
TP178 <sup>A</sup>	-	Yes	2 - cable	1 - 1/2"	1 - 1/2"	50	63
TP179 <sup>A</sup>	Hold-tite	Yes	2 - cable	-	1 - 1/2"	50	66
TP180 <sup>A</sup>	"F", set 1/2"	-	2 - cable, 1 - 1/2"	1 - 1/2"	1 - 1/2"	50	72
TP180G <sup>A</sup>	"F", set 1/2"	-	2 - cable, 1 - 1/2"	1 - 1/2"	1 - 1/2"	50	72
TP184 <sup>A</sup>	"S", set 5/8"	-	2 - cable, 1 - 1/2"	1 - 1/2"	1 - 1/2"	50	70
TP185 <sup>A</sup>	"VP", set 1/2"	-	2 - cable, 1 - 1/2"	1 - 1/2"	1 - 1/2"	50	74
TP185G <sup>A</sup>	"VP", set 1/2"	-	2 - cable, 1 - 1/2"	1 - 1/2"	1 - 1/2"	50	74

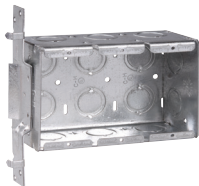
<sup>A</sup> UL approved for use with aluminum interlocking grounding metal-clad cable, Type MCIA (Southwire MCAP<sup>®</sup>). MCAP<sup>®</sup> is a registered trademark of Southwire Company.

<sup>F</sup> CSA certified. G indicates ground screw installed.

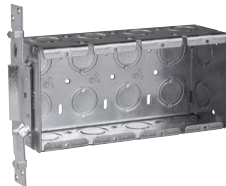
## GANG BOXES SET BACK 1/2"

2 1/2" DEEP – 3 3/4" HIGH – 1/2" & 3/4" CONCENTRIC KOs

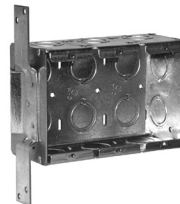
UL LISTED



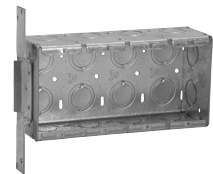
TP632



TP633



TP637



TP638

Cat. #	Gang	Bracket	Width	Knockouts			Capacity cu. in.	Unit qty.	Wt. lbs. per 100
				Each end	Each side	Bottom			
TP632	3	VP	5 7/16"	2	3	6	46.5	5	143
TP633	4	VP	7 7/8"	2	4	8	62.0	5	179
TP637	3	VS	5 7/16"	2	3	6	46.5	5	143
TP638	4	VS	7 7/8"	2	4	8	62.0	5	179

Steel boxes

# Steel switch boxes

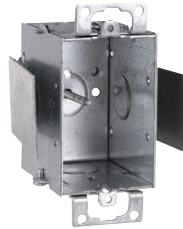
**2 1/2" DEEP – GANGABLE – 12.5 CUBIC INCH CAPACITY**

**2" WIDE x 3" LONG  
FOR CONDUIT – NO CLAMPS**

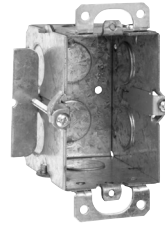
**UL LISTED**



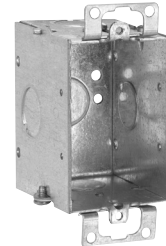
TP214



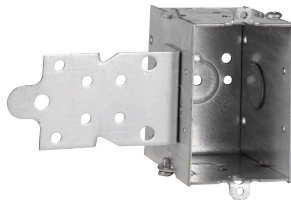
TP216



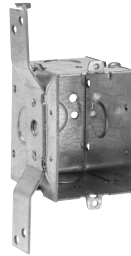
TP217



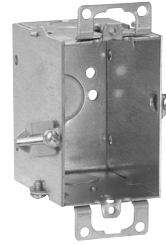
TP218



TP220



TP222



TP224

Cat. #	Bracket	Ears	Leveling Bumps	Knockouts			Unit qty.	Wt. lbs. per 100
				Each end	Each side	Bottom		
TP214	-	-	Yes	1 - 1/2"	-	1 - 1/2"	50	55
TP214G <sup>Ⓢ</sup>	-	-	Yes	1 - 1/2"	-	1 - 1/2"	50	55
TP216	Snap-in	Yes	-	1 - 1/2"	1 - 1/2"	-	50	69
TP217	-	Yes	-	1 - 1/2"	-	1 - 1/2"	50	64
TP218	-	Yes	-	1 - 1/2"	1 - 1/2"	1 - 1/2"	50	58
TP218G <sup>Ⓢ</sup>	-	Yes	-	1 - 1/2"	1 - 1/2"	1 - 1/2"	50	58
TP220	"F", set 1/2"	-	-	1 - 1/2"	1 - 1/2", 1 side	1 - 1/2"	50	66
TP222	"S", set 5/8"	-	-	1 - 1/2"	1 - 1/2", 1 side	1 - 1/2"	50	65
TP222G <sup>Ⓢ</sup>	"S", set 3/8"	-	-	1 - 1/2"	1 - 1/2", 1 side	1 - 1/2"	50	65
TP224	Hold-tite	Yes	-	1 - 1/2"	-	1 - 1/2"	50	61

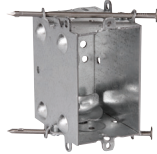
<sup>Ⓢ</sup> CSA certified. G indicates ground screw installed.

# Steel switch boxes

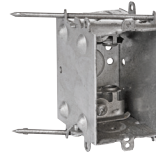
## 2 1/2" DEEP SWITCH BOXES – "INSTANT ON" – 12.5 CUBIC INCH CAPACITY

2" WIDE x 3" LONG

WITH BUMPS – CLAMPS IN EACH END (BUMPS LEVEL THE BOX AGAINST THE SIDE OF STUD, TOP TO BOTTOM, FRONT TO BACK)



TP210



TP213

Cat. #	Clamps	Nails	Knockouts			Unit qty.	Wt. lbs. per 100
			Each end	Each side	Bottom		
TP210	NM cable	Angle	2 - cable, 1 - 1/2"	-	1 - 1/2"	50	66
TP213	Armored cable	Angle	2 - cable, 1 - 1/2"	-	1 - 1/2"	50	66

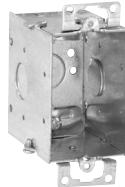
## 2 3/4" DEEP – GANGABLE – 14.0 CUBIC INCH CAPACITY

2" WIDE x 3" LONG

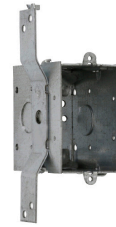
UL LISTED



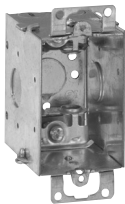
TP660



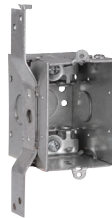
TP662



TP664



TP668



TP670

Cat. #	Bracket	Ears	Knockouts			Unit qty.	Wt. lbs. per 100
			Each end	Each side	Bottom		
<b>For non-metallic cable – clamps in each end</b>							
TP660	-	-	2 - cable	1 - 1/2"	1 - 1/2"	50	62
TP662	-	Yes	2 - cable	1 - 1/2"	1 - 1/2"	50	67
TP664	"S", set 5/8"	-	2 - cable	1 - 1/2"	1 - 1/2"	50	70
<b>For armored &amp; metal-clad (MCI) cable – clamps in each end</b>							
TP668 <sup>A</sup>	-	Yes	2 - cable	1 - 1/2"	1 - 1/2"	50	68
TP670 <sup>A</sup>	"S", set 5/8"	-	2 - cable	1 - 1/2"	1 - 1/2"	50	71

<sup>A</sup>UL approved for use with aluminum interlocking grounding metal-clad cable, Type MCIA (Southwire MCAP™). MCAP™ is a registered trademark of Southwire Company.

# Steel switch boxes

## 2<sup>3</sup>/<sub>4</sub>" DEEP – GANGABLE – 14.0 CUBIC INCH CAPACITY

2" WIDE x 3" LONG  
FOR CONDUIT – NO CLAMPS

UL LISTED



TP672, TP674



(TP676 – 1 screw ear),  
(TP678 – 2 screw ears)



TP680, TP677

Cat. #	Bracket	Ears	Knockouts			Unit qty.	Wt. lbs. per 100
			Each end	Each side	Bottom		
TP672	-	-	1 - 1/2"	1 - 1/2"	1 - 1/2"	50	59
TP674	-	-	1 - 3/4"	1 - 3/4"	1 - 1/2"	50	59
TP676	-	Yes	1 - 1/2"	1 - 1/2"	1 - 1/2"	50	61
TP678	-	Yes	1 - 3/4"	1 - 3/4"	1 - 1/2"	50	61
TP680	"S", set 5/8"	-	1 - 1/2"	1 - 1/2", 1 Side	1 - 1/2"	50	70
TP677	"S", set 5/8"	-	1 - 3/4"	1 - 3/4", 1 Side	1 - 1/2"	50	70

## 3<sup>1</sup>/<sub>2</sub>" DEEP – GANGABLE – 18.0 CUBIC INCH CAPACITY

2" WIDE x 3" LONG  
FOR NON-METALLIC CABLE – CLAMPS IN EACH END

UL LISTED



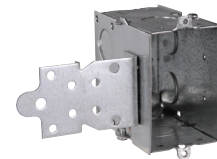
TP236



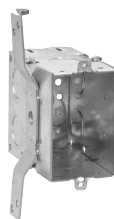
TP238



TP239



TP240



TP242



TP243

Cat. #	Bracket	Ground pigtail	Ears	Knockouts			Unit qty.	Wt. lbs. per 100
				Each end	Each side	Bottom		
TP236	-	-	-	2 - cable, 1 - 1/2"	2 - 1/2"	1 - 1/2"	25	78
TP238	-	-	Yes	2 - cable, 1 - 1/2"	2 - 1/2"	1 - 1/2"	25	80
TP238G <sup>Ⓢ</sup>	-	-	Yes	2 - cable, 1 - 1/2"	2 - 1/2"	1 - 1/2"	25	80
TP239	-	Yes	Yes	2 - cable, 1 - 1/2"	2 - 1/2"	1 - 1/2"	25	81
TP240	"F", set 1/2"	-	-	2 - cable, 1 - 1/2"	2 - 1/2"	1 - 1/2"	25	88
TP242	"S", set 7/8"	-	-	2 - cable, 1 - 1/2"	2 - 1/2"	1 - 1/2"	25	87
TP242G <sup>Ⓢ</sup>	"S", set 7/8"	-	-	2 - cable, 1 - 1/2"	2 - 1/2"	1 - 1/2"	25	87
TP243	"S", set 7/8"	Yes	-	2 - cable, 1 - 1/2"	2 - 1/2"	1 - 1/2"	25	88

<sup>Ⓢ</sup> CSA certified. G indicates ground screw installed.

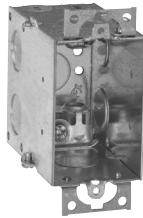
# Steel switch boxes

## 3 1/2" DEEP – GANGABLE – 18.0 CUBIC INCH CAPACITY

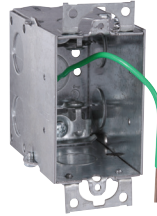
2" WIDE x 3" LONG

FOR ARMORED & METAL-CLAD (MCI) CABLE – CLAMPS IN EACH END

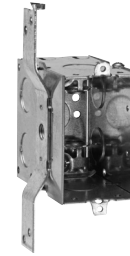
UL LISTED



TP244



TP249



TP246

Cat. #	Bracket	Ground pigtail	Ears	Knockouts			Unit qty.	Wt. lbs. per 100
				Each end	Each side	Bottom		
TP244 <sup>A</sup>	-	-	Yes	2 - cable, 1 - 1/2"	2 - 1/2"	1 - 1/2"	25	81
TP249 <sup>A</sup>	-	Yes	Yes	2 - cable, 1 - 1/2"	2 - 1/2"	1 - 1/2"	25	82
TP246 <sup>A</sup>	"S", set 1/8"	-	-	2 - cable, 1 - 1/2"	2 - 1/2"	1 - 1/2"	25	88

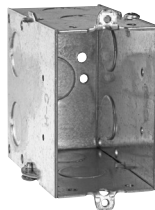
<sup>A</sup>UL approved for use with aluminum interlocking grounding metal-clad cable, Type MCI (Southwire MCAP\*). MCAP\* is a registered trademark of Southwire Company.

## 3 1/2" DEEP – GANGABLE – 18.0 CUBIC INCH CAPACITY

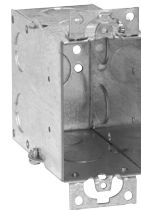
2" WIDE x 3" LONG

FOR CONDUIT – NO CLAMPS

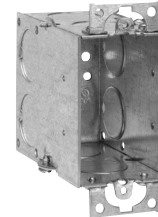
UL LISTED



TP248, TP250



TP252

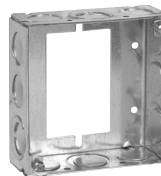


TP254

Cat. #	Bracket	Ears	Knockouts			Unit qty.	Wt. lbs. per 100
			Each end	Each side	Bottom		
TP248	-	-	2 - 1/2"	2 - 1/2"	1 - 1/2"	25	74
TP250	-	-	2 - 3/4"	2 - 3/4"	1 - 1/2"	25	74
TP252	-	Yes	2 - 1/2"	2 - 1/2"	1 - 1/2"	25	76
TP254	-	Yes	2 - 3/4"	2 - 3/4"	1 - 1/2"	25	76
TP254G <sup>F</sup>	-	Yes	2 - 3/4"	2 - 3/4"	1 - 1/2"	25	76

<sup>F</sup>CSA certified. G indicates ground screw installed.

## 1 1/2" DEEP SWITCH & MASONRY BOX EXTENSION RING



TP422<sup>B</sup>

Cat. #	Knockouts		Unit qty.	Wt. lbs. per 100
	Sides	Bottom		
<b>1 1/2" deep switch &amp; masonry box extension ring</b>				
TP422 <sup>D</sup> <sup>H</sup>	8 - 1/2", 4 - 1/2" + 3/4" E	-	50	50

<sup>D</sup>For use as extension with switch box, not four square box.

<sup>H</sup>CSA certified.