

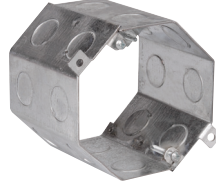
Steel specialty boxes

4" OCTAGON CONCRETE BOXES & HUNG CEILING BOXES

UL LISTED



TP620, TP622, TP628



TP635, TP636, TP644



TP623, TP624

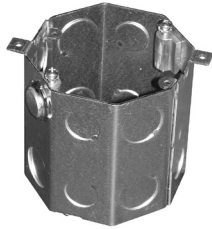
| Cat. # | Depth | Knockouts | Capacity cu. in. | Fan rated (weight lbs.) | Fixture rated (weight lbs.) | Unit qty. | Wt. lbs. per 100 |
|--|--------|--------------------------|------------------|-------------------------|-----------------------------|-----------|------------------|
| TP620 ^M ⓪ | 2" | 1/2" and 3/4" single row | 23.0 | No | 50 | 25 | 60 |
| TP622 ^M ⓪ | 2 1/2" | 1/2" and 3/4" single row | 29.0 | No | 50 | 25 | 72 |
| TP628 ^M ⓪ | 3" | 1/2" and 3/4" single row | 35.0 | No | 50 | 20 | 85 |
| TP634 ^C | 3" | 1" and 3/4" single row | 30.3 | No | 50 | 20 | 77 |
| TP635 ^M ⓪ | 3 1/2" | 1/2" double row | 43.0 | No | 50 | 20 | 93 |
| TP636 ^M ⓪ | 3 1/2" | 1/2" and 3/4" double row | 43.0 | No | 50 | 20 | 93 |
| TP639 ^C | 3 1/2" | 1" and 3/4" double row | 41.0 | No | 50 | 20 | 89 |
| TP642 ^C | 4" | 1" and 3/4" double row | 47.0 | No | 50 | 20 | 106 |
| TP644 ^M ⓪ | 4" | 1/2" and 3/4" double row | 47.0 | No | 50 | 20 | 113 |
| Hung ceiling boxes (with TP650 cover) | | | | | | | |
| TP623 ^M ⓪ | 3 1/2" | 1/2" double row | 43.0 | No | 50 | 20 | 93 |
| TP624 ^M ⓪ | 3 1/2" | 1/2" and 3/4" double row | 43.0 | No | 50 | 20 | 93 |

⓪ Not UL Listed for stackable use.
 ⓐ Not UL Listed.

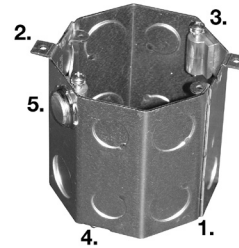
Steel specialty boxes

4" OCTAGON CONCRETE BOXES

UL LISTED



TP643



Applications:

- Used in poured deck applications
- Typical construction includes: high rises, apartments, condominiums and restaurants with outdoor dining areas
- Installed on wooden or steel forms and concrete poured around
- Upon removal of the forms, the box is flush with the concrete
- It is common, and continuing to become even more so, to have ceiling fans mounted to these boxes; because of the additional mounting support boss, this new box is suitable for use with fans of up to 70 pounds and fixtures up to 90 pounds

Features:

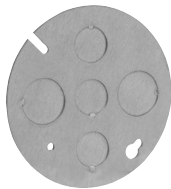
1. The TP643 fan rated concrete box is made from two-piece welded construction and is supplied with two rows of $\frac{1}{2}$ " and $\frac{3}{4}$ " dedicated KOs
2. The box is also supplied with two external mounting ears which are used to secure the box to the forms
3. The fan (or fixture) is held securely in place by the two 10-32 x $1\frac{1}{2}$ " long pan head screws and lock washers; the screws attach to the specially designed boss
4. There are two 8-32 x $\frac{1}{2}$ " screws provided for attachment of a box plate/cover (TP648, TP649 or TP650 – ordered separately)
5. Mounting support boss and locknuts allow the TP643 box to be used with fans of up to 70 pounds and fixtures up to 90 pounds

| Cat. # | Depth | Knockouts | Capacity cu. in. | Fan rated (weight lbs.) | Fixture rated (weight lbs.) | Unit qty. | Wt. lbs. per 100 |
|--------|-------|-------------------------------------|------------------|-------------------------|-----------------------------|-----------|------------------|
| TP643 | 4" | $\frac{1}{2}$ " and $\frac{3}{4}$ " | 46.0 | 70 | 90 | 20 | 102 |

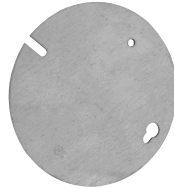
Ⓞ Not UL Listed for stackable use.

CONCRETE BOX PLATES

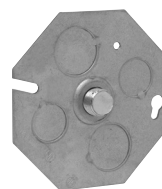
UL LISTED



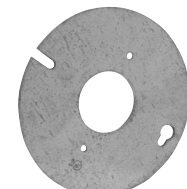
TP648



TP649



TP650



TP652

| Cat. # | Description | Unit qty. | Wt. lbs. per 100 |
|--------|---|-----------|------------------|
| TP648 | No stud, 3 - $\frac{1}{2}$ " and 2 - $\frac{3}{4}$ " KOs | 50 | 28 |
| TP649 | Flat, blank | 50 | 28 |
| TP650 | $\frac{3}{8}$ " stud, 2 - $\frac{1}{2}$ " and 2 - $\frac{3}{4}$ " KOs | 50 | 33 |
| TP652 | Single receptacle | 50 | 24 |