

Stainless steel fittings

Plugs, clamps & U-bolts

HEX HEAD PLUGS

Features:

- Used for closing threaded conduit hubs or openings
- NPT threads



PLG50SS

Standard materials:

- 316 stainless steel

Cat. #	Size	Unit qty.	Std. pkg.	Wt. lbs. per 100	Length	Hex nut size
PLG50SS	1/2"	100	100	11	1.00	0.93
PLG75SS	3/4"	100	100	16	1.03	1.17
PLG100SS	1"	100	100	25	1.16	1.51
PLG150SS	1 1/2"	50	50	58	1.62	2.10
PLG200SS	2"	50	50	100	1.56	2.60

RECESSED HEX HEAD PLUGS

Features:

- Used for closing threaded conduit hubs or openings
- NPT threads



PLG2SS

Standard materials:

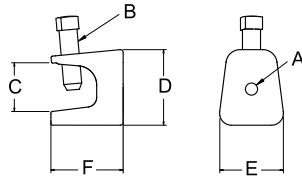
- 316 stainless steel

Cat. #	Size	Unit qty.	Std. pkg.	Wt. lbs. per 100	Length
PLG1SS	1/2"	50	50	6	0.84
PLG2SS	3/4"	50	50	10	1.05
PLG3SS	1"	25	25	21	1.32
PLG4SS	1 1/4"	25	25	35	1.67
PLG5SS	1 1/2"	10	10	44	1.91
PLG6SS	2"	10	10	84	2.38

BEAM CLAMPS



531SST



Features:

- This heavy duty "electrician's" style beam clamp is cast in stainless for superior strength and corrosion resistance
- Designed for use on I-beams, channels and other structural members, this beam clamp provides firm fixturing without drilling holes
- Attachment holes in the back and bottom permit a wide variety of applications

Standard materials:

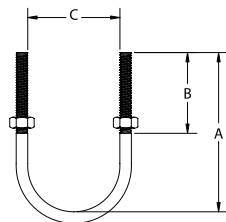
- 316 stainless steel

Cat. #	Size	Unit qty.	Std. pkg.	Wt. lbs. per 100	A	B	C	D	E	F
531SST	1 1/8"	50	50	25	1/4" - 20	5/16" - 18	7/8"	1 3/8"	1"	1 5/16"
533SST	2"	25	25	80	3/8" - 16	1/2" - 13	1 3/16"	1 7/8"	1 7/8"	2"
534SST	2 1/4"	25	25	148	1/2" - 13	5/8" - 11	1 1/16"	2 3/16"	2 1/8"	2 1/4"

U-BOLTS



UBM50SS



Standard materials:

- 316 stainless steel

Cat. #	Size	Unit qty.	Std. pkg.	Wt. lbs. per 100	A	B	C	Size & pitch	Load rating (lbs.)
UBM50SS	1/2"	100	100	13	2.41"	1.50"	0.94"	5/16" - 18	950
UBM75SS	3/4"	100	100	14	2.73"	1.50"	1.15"	5/16" - 18	950
UBM100SS	1"	100	100	15	3.04"	1.50"	1.41"	5/16" - 18	950
UBM125SS	1 1/4"	50	50	16	3.16"	1.50"	1.76"	5/16" - 18	950
UBM150SS	1 1/2"	50	50	18	3.48"	1.50"	2.00"	5/16" - 18	950
UBM200SS	2"	50	50	30	4.30"	1.75"	2.49"	3/8" - 16	1250
UBM250SS	2 1/2"	50	50	34	4.80"	1.75"	2.99"	3/8" - 16	1250
UBM300SS	3"	50	50	38	5.36"	1.75"	3.61"	3/8" - 16	1250
UBM350SS	3 1/2"	50	50	40	5.80"	1.75"	4.11"	3/8" - 16	1250
UBM400SS	4"	50	50	45	6.50"	1.75"	4.61"	3/8" - 16	1250

Stainless steel

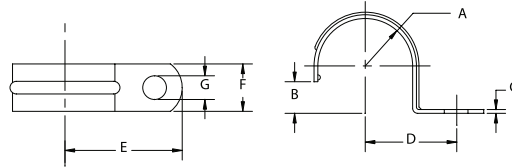
Stainless steel fittings

Straps

ONE HOLE STRAPS

Standard materials:

- 316 stainless steel



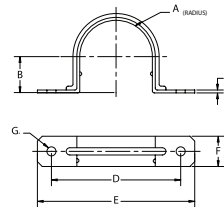
410SS

Cat. #	Size	Unit qty.	Std. pkg.	Wt. lbs. per 100	A	B	C	D	E	F	G
410SS	1/2"	400	400	4	0.420"	0.390"	0.075"	0.937"	1.375"	0.625"	0.250"
411SS	3/4"	200	200	5	0.525"	0.500"	0.090"	1.031"	1.562"	0.750"	0.250"
412SS	1"	100	100	7	0.655"	0.620"	0.090"	1.125"	1.812"	0.875"	0.312"
413SS	1 1/2"	50	50	10	0.830"	0.800"	0.100"	1.500"	2.000"	0.875"	0.375"
414SS	1 1/2"	50	50	14	0.950"	0.920"	0.125"	1.875"	2.500"	1.000"	0.437"
415SS	2"	25	25	20	1.185"	1.150"	0.125"	2.125"	2.750"	1.125"	0.562"
206SS	2 1/2"	25	25	42	1.437"	1.400"	0.150"	2.562"	3.312"	1.250"	0.562"
207SS	3"	10	10	51	1.750"	1.700"	0.150"	2.875"	3.625"	1.250"	0.562"
208SS	3 1/2"	10	10	70	2.000"	1.950"	0.180"	3.250"	4.000"	1.250"	0.562"
209SS	4"	10	10	78	2.250"	2.200"	0.180"	3.500"	4.250"	1.250"	0.562"

TWO HOLE STRAPS

Standard materials:

- 316 stainless steel



496 2SS

Cat. #	Size	Unit qty.	Std. pkg.	Wt. lbs. per 100	A	B	C	D	E	F	G
496 2SS	3/8"	400	400	2	0.350"	0.320"	0.024 - 0.030"	1.560"	2.000"	0.500"	0.188"
496 3SS	1/2"	200	200	2	0.420"	0.390"	0.024 - 0.030"	1.780"	2.250"	0.560"	0.188"
496 4SS	3/4"	200	200	3	0.520"	0.500"	0.024 - 0.030"	2.180"	2.620"	0.620"	0.188"
496 5SS	1"	100	100	4	0.650"	0.620"	0.033 - 0.038"	2.530"	3.200"	0.750"	0.250"
496 6SS	1 1/4"	50	50	6	0.830"	0.800"	0.033 - 0.038"	3.160"	4.000"	0.870"	0.250"
496 7SS	1 1/2"	50	50	9	0.950"	0.920"	0.043 - 0.050"	3.370"	4.200"	0.930"	0.250"
496 8SS	2"	50	50	12	1.180"	1.150"	0.043 - 0.050"	4.250"	5.120"	1.000"	0.375"
496 9SS	2 1/2"	25	25	16	1.430"	1.400"	0.053 - 0.060"	4.950"	5.870"	1.000"	0.375"
496 10SS	3"	25	25	20	1.750"	1.700"	0.053 - 0.060"	5.500"	6.500"	1.000"	0.375"
496 11SS	3 1/2"	25	25	29	2.000"	1.950"	0.068 - 0.075"	6.180"	7.120"	1.000"	0.437"
496 12SS	4"	25	25	32	2.250"	2.200"	0.068 - 0.075"	6.810"	7.750"	1.000"	0.437"

Stainless steel

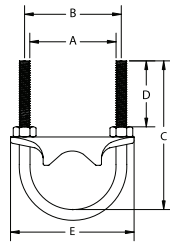
Stainless steel fittings

Clamps

RIGHT ANGLE CLAMPS



RAC50SS



Features:

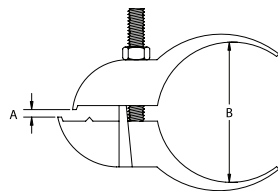
- Designed to fit pipe/rigid conduit as well as PVC coated rigid conduit, right angle clamps firmly fix pipe to the flange of a structural member without drilling holes
- Cast in CF8M (316) with 316 stainless steel U-bolt and nuts, these clamps are designed for both strength and corrosion resistance

Cat. #	Size	Unit qty.	Std. pkg.	Wt. lbs. per 100	A	B	C	D	E
RAC50SS	1/2"	50	50	34	0.94"	1.25"	2.41"	1.50"	2.00"
RAC75SS	3/4"	50	50	36	1.15"	1.46"	2.73"	1.50"	2.13"
RAC100SS	1"	50	50	44	1.41"	1.72"	3.04"	1.50"	2.63"
RAC125SS	1 1/4"	25	25	51	1.76"	2.07"	3.16"	1.50"	2.88"
RAC150SS	1 1/2"	25	25	61	2.00"	2.31"	3.48"	1.50"	3.37"
RAC200SS	2"	25	25	97	2.49"	2.87"	4.30"	1.75"	4.62"
RAC250SS	2 1/2"	25	25	125	2.99"	3.37"	4.80"	1.75"	4.62"
RAC300SS	3"	10	10	148	3.61"	3.99"	5.36"	1.75"	5.27"
RAC350SS	3 1/2"	10	10	163	4.11"	4.49"	5.80"	1.75"	5.75"
RAC400SS	4"	10	10	178	4.61"	4.99"	6.50"	1.75"	6.25"

PARALLEL CLAMPS



PARC75SS



Features:

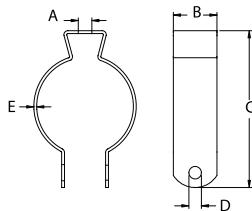
- Used to run pipe or conduit along the flange of I-beams or channels simply and easily without drilling holes
- The 100% stainless (CF8M and 316 stainless steel) design offers superb corrosion resistance and strength
- These clamps will fit both rigid conduit and PVC coated rigid conduit and are available in 3/4" and 1" trade sizes

Cat. #	Size	Unit qty.	Std. pkg.	Wt. lbs. per 100	A	B	Overall width
PARC75SS	3/4"	50	50	58	2.89"	1.38"	1.1
PARC100SS	1"	50	50	60	3.12"	1.38"	1.1

CONDUIT HANGERS



0BSS316



316 stainless steel

Cat. #	Size	Unit qty.	Std. pkg.	Wt. lbs. per 100	A	B	C	D	E
0BSS316	1/2"	100	100	7	0.255"	0.750"	1.900"	0.275"	0.050"
1BSS316	3/4"	100	100	9	0.255"	0.875"	2.100"	0.275"	0.050"
2BSS316	1"	100	100	10	0.255"	0.875"	2.400"	0.275"	0.060"
3BSS316	1 1/4"	50	50	11	0.255"	0.875"	2.800"	0.275"	0.060"
4BSS316	1 1/2"	50	50	18	0.320"	1.000"	3.250"	0.275"	0.060"
5BSS316	2"	25	25	26	0.320"	1.250"	3.750"	0.275"	0.060"
6BSS316	2 1/2"	10	10	33	0.375"	1.125"	4.630"	0.313"	0.075"
7BSS316	3"	10	10	40	0.375"	1.187"	5.500"	0.313"	0.075"
9BSS316	4"	10	10	49	0.375"	1.250"	6.250"	0.313"	0.075"

301 stainless steel

With bolt



1BSS



Cat. #	Description	Unit qty.	Wt. lbs. per 100
0BSS	3/8 and 1/2 RGD 1/2 EMT hanger with bolt	100	6
1BSS	3/4 RGD 3/4 EMT hanger with bolt	100	7
2BSS	1 RGD 1 EMT hanger with bolt	100	11
2 1/2BSS	1 1/4 EMT hanger with bolt	100	10
3BSS	1 1/4 RGD 1 1/2 EMT hanger with bolt	100	13
4BSS	1 1/2 RGD hanger with bolt	100	16
5BSS	2 RGD 2 EMT hanger with bolt	50	17
6BSS	2 1/2 RGD 2 1/2 EMT hanger with bolt	50	32
7BSS	3 RGD 3 EMT hanger with bolt	25	39
8BSS	3 1/2 RGD 3 1/2 EMT hanger with bolt	10	41
9BSS	4 RGD 4 EMT hanger with bolt	10	44