

## Uni-Mount™ assemblies with wiring devices

PRE-formance Uni-Mount assemblies – all catalog numbers contain a Uni-Mount cover (TP31000 - TP37000), 4" square back box, an 8" insulated solid box ground wire and one or two pre-wired Eaton's Wiring Devices with leads, push-in connectors and device protect plates.

All assemblies are shown with ivory colored devices. At the end of the catalog number, replace the 'V' with 'W' for white colored device. Other device colors and types are available. Consult factory for details.

UL and cUL Listed



UL File No. E-324733

### Commonly ordered catalog examples:

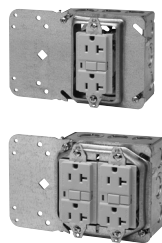
See Uni-Mount assembly catalog numbering system at the end of the Uni-Mount assembly pages for more information on how to construct catalog numbers for almost any customer application.

Duplex receptacle



Commercial grade receptacle	Industrial grade receptacle	Hospital grade receptacle	4" square steel back box	Uni-Mount
Cat. # Assembly with CR20V commercial grade 20A duplex receptacle installed	Cat. # Assembly with 5362V industrial grade 20A duplex receptacle installed	Cat. # Assembly with 8300V hospital grade 20A duplex receptacle installed		
<b>Single 20A duplex receptacle</b>				
TP31403-C20DV	TP31403-I20DV	TP31403-H20DV	2 1/8" deep	5/8" single gang
TP31404-C20DV	TP31404-I20DV	TP31404-H20DV	1 1/2" deep	5/8" single gang
TP32403-C20DV	TP32403-I20DV	TP32403-H20DV	2 1/8" deep	3/4" single gang
TP32404-C20DV	TP32404-I20DV	TP32404-H20DV	1 1/2" deep	3/4" single gang
<b>Double 20A duplex receptacle</b>				
TP36403-C20DDV	TP36403-I20DDV	TP36403-H20DDV	2 1/8" deep	5/8" two gang
TP36404-C20DDV	TP36404-I20DDV	TP36404-H20DDV	1 1/2" deep	5/8" two gang
TP37403-C20DDV	TP37403-I20DDV	TP37403-H20DDV	2 1/8" deep	3/4" two gang
TP37404-C20DDV	TP37404-I20DDV	TP37404-H20DDV	1 1/2" deep	3/4" two gang

GFCI receptacle



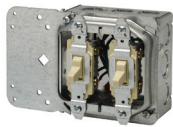
Specification grade GFCI receptacle	Hospital grade GFCI receptacle	4" square steel back box	Uni-Mount
Cat. # Assembly with VGF20 specification grade 20A GFCI receptacle installed	Cat. # Assembly with VGFH20V hospital grade 20A GFCI receptacle installed		
<b>Single 20A GFCI receptacle</b>			
TP31403-S20GV	TP31403-H20GV	2 1/8" deep	5/8" single gang
TP31404-S20GV	TP31404-H20GV	1 1/2" deep	5/8" single gang
TP32403-S20GV	TP32403-H20GV	2 1/8" deep	3/4" single gang
TP32404-S20GV	TP32404-H20GV	1 1/2" deep	3/4" single gang
<b>Double 20A GFCI receptacle</b>			
TP36403-S20GGV	TP36403-H20GGV	2 1/8" deep	5/8" two gang
TP36404-S20GGV	TP36404-H20GGV	1 1/2" deep	5/8" two gang
TP37403-S20GGV	TP37403-H20GGV	2 1/8" deep	3/4" two gang
TP37404-S20GGV	TP37404-H20GGV	1 1/2" deep	3/4" two gang

Uni-Mount™ assemblies with wiring devices

Commonly ordered catalog examples:

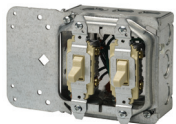
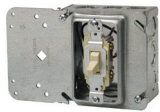
See Uni-Mount assembly catalog numbering system at the end of the Uni-Mount assembly pages for more information on how to construct catalog numbers for almost any customer application.

Single pole switch



Commercial grade single pole switch	Industrial grade single pole switch	4" square steel back box	Uni-Mount
Cat. # Assembly with CS120V commercial grade 20A single pole switch installed	Cat. # Assembly with AH1221V industrial grade 20A single pole switch installed		
<b>Single 20A single pole switch</b>			
TP31403-C20SPV	TP31403-I20SPV	2 1/8" deep	5/8" single gang
TP31404-C20SPV	TP31404-I20SPV	1 1/2" deep	5/8" single gang
TP32403-C20SPV	TP32403-I20SPV	2 1/8" deep	3/4" single gang
TP32404-C20SPV	TP32404-I20SPV	1 1/2" deep	3/4" single gang
<b>Double 20A single pole switch</b>			
TP36403-C20SPSPV	TP36403-I20SPSPV	2 1/8" deep	5/8" two gang
TP36404-C20SPSPV	TP36404-I20SPSPV	1 1/2" deep	5/8" two gang
TP37403-C20SPSPV	TP37403-I20SPSPV	2 1/8" deep	3/4" two gang
TP37404-C20SPSPV	TP37404-I20SPSPV	1 1/2" deep	3/4" two gang

Three way switch



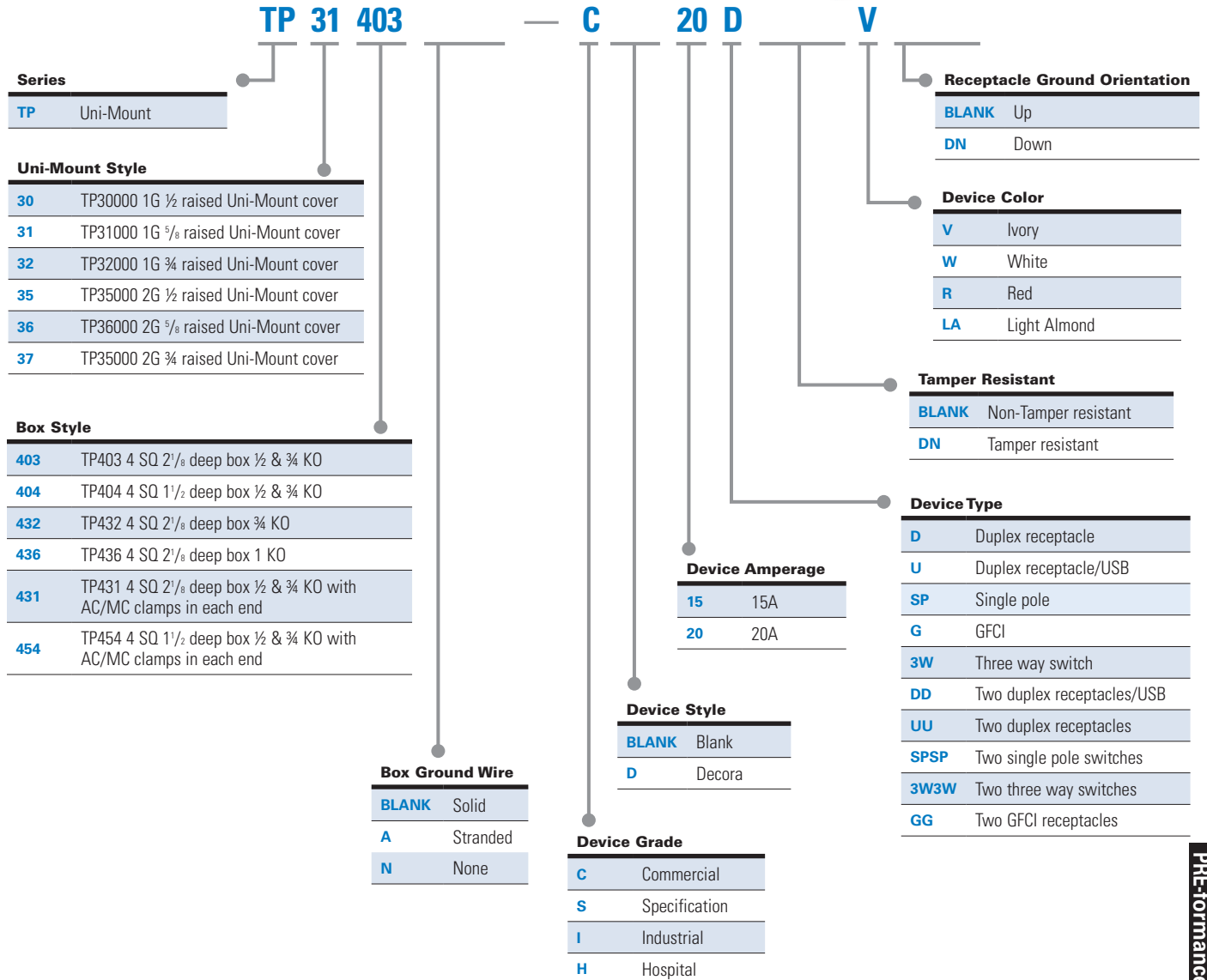
Commercial grade three way switch	Industrial grade three way switch	4" square steel back box	Uni-Mount
Cat. # Assembly with CS320V commercial grade 20A three way switch installed	Cat. # Assembly with AH1223V industrial grade 20A three way switch installed		
<b>Single 20A three way switch</b>			
TP31403-C203WV	TP31403-I203WV	2 1/8" deep	5/8" single gang
TP31404-C203WV	TP31404-I203WV	1 1/2" deep	5/8" single gang
TP32403-C203WV	TP32403-I203WV	2 1/8" deep	3/4" single gang
TP32404-C203WV	TP32404-I203WV	1 1/2" deep	3/4" single gang
<b>Double 20A three way switch</b>			
TP36403-C203W3WV	TP36403-I203W3WV	2 1/8" deep	5/8" two gang
TP36404-C203W3WV	TP36404-I203W3WV	1 1/2" deep	5/8" two gang
TP37403-C203W3WV	TP37403-I203W3WV	2 1/8" deep	3/4" two gang
TP37404-C203W3WV	TP37404-I203W3WV	1 1/2" deep	3/4" two gang

- Other box types, device colors, mud ring depths, brackets and assembly configurations are available. Consult factory for details.
- To change the color of device from ivory (as shown) to white, substitute 'V' (ivory) with 'W' (white). For example: TP314D C20DV becomes TP314D C20DW.
- All receptacles are shipped standard ground up. Add suffix DN for ground down.
- All assemblies shipped standard with metal device protect plates.
- Pre-installed connectors available on all assembly types. Consult factory for details.

## Uni-Mount™ assemblies with wiring devices

### PRE-formance™ Catalog numbering system for Uni-Mount™ assemblies with wiring devices:

Part number example  
**TP31403-C20DV**



#### Standard Eaton's Wiring Devices used in PRE-formance assemblies

Eaton's Crouse-Hinds Wiring Device nomenclature (without color suffix)	Eaton's Wiring Devices catalog number used (shown without color suffix)	Description
C20D	CR20	Commercial grade 20A duplex receptacle
I20D	5362	Industrial grade 20A duplex receptacle
H20D	AH8300	Hospital grade 20A duplex receptacle
S20G	SGF20	Specification grade 20A GFCI receptacle
H20G	SGFH20	Hospital grade 20A GFCI receptacle
C20SP	CS120	Commercial grade 20A single pole switch
I20SP	AH1221	Industrial grade 20A single pole switch
C203W	CS320	Commercial grade 20A three way switch
I203W	AH1223	Industrial grade 20A three way switch

Single sided assemblies with wiring devices

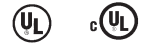
PRE-formance single sided assemblies – all catalog numbers contain a single sided bracket (BB4-23 for 3½” and 2½” studs), a 4” square box, an 8” insulated solid box ground wire and one or two pre-wired Eaton’s Wiring Devices with leads, push-in connectors and device protect plates.



All assemblies are shown with ivory colored devices. At the end of the catalog number, replace the ‘V’ with ‘W’ for white colored device. Other device colors and types are available. Consult factory for details. Double sided direct mount assemblies are also available. Substitute ‘PFH3’ in the catalog number with ‘PF3DS’ (BB73 double sided bracket).

4” and 6” far side supports are available. Replace ‘PFH3’ (for 2½” and 3½” studs) with ‘PFH4’ (4”) (BB44) or ‘PFH6’ (6”) (BB46).



UL and cUL Listed





UL File No. E-324733

Commonly ordered catalog examples:

See assembly catalog numbering system at the end of this section for more information on how to construct catalog numbers for almost any customer application.

Duplex receptacle	Commercial grade receptacle	Industrial grade receptacle	Hospital grade receptacle	4” square steel back box	Mud ring
	Cat. # Assembly with CR20V Commercial grade 20A duplex receptacle installed	Cat. # Assembly with 5362V industrial grade 20A duplex receptacle installed	Cat. # Assembly with 8300V hospital grade 20A duplex receptacle installed		
  	<b>Single 20A duplex receptacle</b>				
	PFH3-4D58C20DV	PFH3-4D58I20DV	PFH3-4D58H20DV	2½” deep	5⁄8” single gang
	PFH3-4S58C20DV	PFH3-4S58I20DV	PFH3-4S58H20DV	1½” deep	5⁄8” single gang
	PFH3-4D75C20DV	PFH3-4D75I20DV	PFH3-4D75H20DV	2½” deep	3⁄4” single gang
	PFH3-4S75C20DV	PFH3-4S75I20DV	PFH3-4S75H20DV	1½” deep	3⁄4” single gang
	<b>Double 20A duplex receptacle</b>				
	PFH3-4D258C20DDV	PFH3-4D258I20DDV	PFH3-4D258H20DDV	2½” deep	5⁄8” two gang
	PFH3-4S258C20DDV	PFH3-4S258I20DDV	PFH3-4S258H20DDV	1½” deep	5⁄8” two gang
	PFH3-4D275C20DDV	PFH3-4D275I20DDV	PFH3-4D275H20DDV	2½” deep	3⁄4” two gang
	PFH3-4S275C20DDV	PFH3-4S275I20DDV	PFH3-4S275H20DDV	1½” deep	3⁄4” two gang

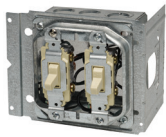
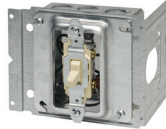
GFCI receptacle	Specification grade GFCI receptacle	Hospital grade GFCI receptacle	4” square steel back box	Mud ring
	Cat. # Assembly with VGF20 specification grade 20A GFCI receptacle installed	Cat. # Assembly with VGFH20V hospital grade 20A GFCI receptacle installed		
  	<b>Single 20A GFCI receptacle</b>			
	PFH3-4D58S20GV	PFH3-4D58H20GV	2½” deep	5⁄8” single gang
	PFH3-4S58S20GV	PFH3-4S58H20GV	1½” deep	5⁄8” single gang
	PFH3-4D75S20GV	PFH3-4D75H20GV	2½” deep	3⁄4” single gang
	PFH3-4S75S20GV	PFH3-4S75H20GV	1½” deep	3⁄4” single gang
	<b>Double 20A GFCI receptacle</b>			
	PFH3-4D258S20GGV	PFH3-4D258H20GGV	2½” deep	5⁄8” two gang
	PFH3-4S258S20GGV	PFH3-4S258H20GGV	1½” deep	5⁄8” two gang
	PFH3-4D275S20GGV	PFH3-4D275H20GGV	2½” deep	3⁄4” two gang
	PFH3-4S275S20GGV	PFH3-4S275H20GGV	1½” deep	3⁄4” two gang

## Single sided assemblies with wiring devices

### Commonly ordered catalog examples:

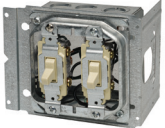
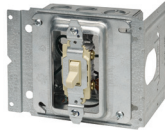
See assembly catalog numbering system at the end of this section for more information on how to construct catalog numbers for almost any customer application.

Single pole switch



Commercial grade single pole switch	Industrial grade single pole switch		
Cat. # Assembly with CS120V commercial grade 20A single pole switch installed	Cat. # Assembly with AH1221V industrial grade 20A single pole switch installed	4" square steel back box	Mud ring
<b>Single 20A single pole switch</b>			
PFH3-4D58C20SPV	PFH3-4D58I20SPV	2 <sup>1</sup> / <sub>8</sub> " deep	5 <sup>1</sup> / <sub>8</sub> " single gang
PFH3-4S58C20SPV	PFH3-4S58I20SPV	1 <sup>1</sup> / <sub>2</sub> " deep	5 <sup>1</sup> / <sub>8</sub> " single gang
PFH3-4D75C20SPV	PFH3-4D75I20SPV	2 <sup>1</sup> / <sub>8</sub> " deep	3 <sup>3</sup> / <sub>4</sub> " single gang
PFH3-4S75C20SPV	PFH3-4S75I20SPV	1 <sup>1</sup> / <sub>2</sub> " deep	3 <sup>3</sup> / <sub>4</sub> " single gang
<b>Double 20A single pole switch</b>			
PFH3-4D258C20SPSPV	PFH3-4D258I20SPSPV	2 <sup>1</sup> / <sub>8</sub> " deep	5 <sup>1</sup> / <sub>8</sub> " two gang
PFH3-4S258C20SPSPV	PFH3-4S258I20SPSPV	1 <sup>1</sup> / <sub>2</sub> " deep	5 <sup>1</sup> / <sub>8</sub> " two gang
PFH3-4D275C20SPSPV	PFH3-4D275I20SPSPV	2 <sup>1</sup> / <sub>8</sub> " deep	3 <sup>3</sup> / <sub>4</sub> " two gang
PFH3-4S275C20SPSPV	PFH3-4S275I20SPSPV	1 <sup>1</sup> / <sub>2</sub> " deep	3 <sup>3</sup> / <sub>4</sub> " two gang

Three way switch



Commercial grade three way switch	Industrial grade three way switch		
Cat. # Assembly with CS320V commercial grade 20A three way switch installed	Cat. # Assembly with AH1223V industrial grade 20A three way switch installed	4" square steel back box	Mud ring
<b>Single 20A three way switch</b>			
PFH3-4D58C203WV	PFH3-4D58I203WV	2 <sup>1</sup> / <sub>8</sub> " deep	5 <sup>1</sup> / <sub>8</sub> " single gang
PFH3-4S58C203WV	PFH3-4S58I203WV	1 <sup>1</sup> / <sub>2</sub> " deep	5 <sup>1</sup> / <sub>8</sub> " single gang
PFH3-4D75C203WV	PFH3-4D75I203WV	2 <sup>1</sup> / <sub>8</sub> " deep	3 <sup>3</sup> / <sub>4</sub> " single gang
PFH3-4S75C203WV	PFH3-4S75I203WV	1 <sup>1</sup> / <sub>2</sub> " deep	3 <sup>3</sup> / <sub>4</sub> " single gang
<b>Double 20A three way switch</b>			
PFH3-4D258C203W3WV	PFH3-4D258I203W3WV	2 <sup>1</sup> / <sub>8</sub> " deep	5 <sup>1</sup> / <sub>8</sub> " two gang
PFH3-4S258C203W3WV	PFH3-4S258I203W3WV	1 <sup>1</sup> / <sub>2</sub> " deep	5 <sup>1</sup> / <sub>8</sub> " two gang
PFH3-4D275C203W3WV	PFH3-4D275I203W3WV	2 <sup>1</sup> / <sub>8</sub> " deep	3 <sup>3</sup> / <sub>4</sub> " two gang
PFH3-4S275C203W3WV	PFH3-4S275I203W3WV	1 <sup>1</sup> / <sub>2</sub> " deep	3 <sup>3</sup> / <sub>4</sub> " two gang

- Other box types, device colors, mud ring depths, brackets and assembly configurations are available. Consult factory for details.
- To change the color of device from ivory (as shown) to white, substitute 'V' (ivory) with 'W' (white). For example: PFH3-4D58C20DV becomes PFH3-4D58C20DW.
- All receptacles are shipped standard ground up. Add suffix DN for ground down.
- All assemblies shipped standard with metal device protect plates.
- Pre-installed connectors available on all assembly types. Consult factory for details.

## Double sided assemblies with wiring devices

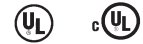
PRE-formance double sided assemblies – all catalog numbers contain a double sided bracket (BB73-23 for 3½" and 2½" studs), a 4" square box, an 8" insulated solid box ground wire and one or two pre-wired Eaton's Wiring Devices with leads, push-in connectors and device protect plates.



All assemblies are shown with ivory colored devices. At the end of the catalog number, replace the 'V' with 'W' for white colored device. Other device colors and types are available. Consult factory for details.

4" and 6" far side supports are available. Replace 'PF3DS' (for 2½" and 3½" studs) with 'PF4DS' (4") (BB74) or 'PF6DS' (6") (BB76).

UL and cUL Listed

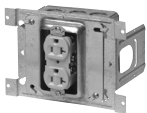


UL File No. E-324733

### Commonly ordered catalog examples:

See assembly catalog numbering system at the end of this section for more information on how to construct catalog numbers for almost any customer application.

#### Duplex receptacle



Commercial grade receptacle	Industrial grade receptacle	Hospital grade receptacle	4" square steel back box	Mud ring
Cat. # Assembly with CR20V commercial grade 20A duplex receptacle installed	Cat. # Assembly with 5362V industrial grade 20A duplex receptacle installed	Cat. # Assembly with 8300V hospital grade 20A duplex receptacle installed		
<b>Single 20A duplex receptacle</b>				
PF3DS-4D58C20DV	PF3DS-4D58I20DV	PF3DS-4D58H20DV	2½" deep	5⁄8" single gang
PF3DS-4S58C20DV	PF3DS-4S58I20DV	PF3DS-4S58H20DV	1½" deep	5⁄8" single gang
PF3DS-4D75C20DV	PF3DS-4D75I20DV	PF3DS-4D75H20DV	2½" deep	¾" single gang
PF3DS-4S75C20DV	PF3DS-4S75I20DV	PF3DS-4S75H20DV	1½" deep	¾" single gang
<b>Double 20A duplex receptacle</b>				
PF3DS-4D258C20DDV	PF3DS-4D258I20DDV	PF3DS-4D258H20DDV	2½" deep	5⁄8" two gang
PF3DS-4S258C20DDV	PF3DS-4S258I20DDV	PF3DS-4S258H20DDV	1½" deep	5⁄8" two gang
PF3DS-4D275C20DDV	PF3DS-4D275I20DDV	PF3DS-4D275H20DDV	2½" deep	¾" two gang
PF3DS-4S275C20DDV	PF3DS-4S275I20DDV	PF3DS-4S275H20DDV	1½" deep	¾" two gang

#### GFCI receptacle



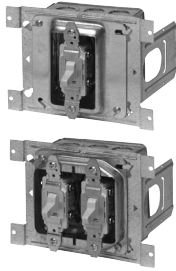
Specification grade GFCI receptacle	Hospital grade GFCI receptacle	4" square steel back box	Mud ring
Cat. # Assembly with VGF20 specification grade 20A GFCI receptacle installed	Cat. # Assembly with VGFH20V hospital grade 20A GFCI receptacle installed		
<b>Single 20A GFCI receptacle</b>			
PF3DS-4D58S20GV	PF3DS-4D58H20GV	2½" deep	5⁄8" single gang
PF3DS-4S58S20GV	PF3DS-4S58H20GV	1½" deep	5⁄8" single gang
PF3DS-4D75S20GV	PF3DS-4D75H20GV	2½" deep	¾" single gang
PF3DS-4S75S20GV	PF3DS-4S75H20GV	1½" deep	¾" single gang
<b>Double 20A GFCI receptacle</b>			
PF3DS-4D258S20GGV	PF3DS-4D258H20GGV	2½" deep	5⁄8" two gang
PF3DS-4S258S20GGV	PF3DS-4S258H20GGV	1½" deep	5⁄8" two gang
PF3DS-4D275S20GGV	PF3DS-4D275H20GGV	2½" deep	¾" two gang
PF3DS-4S275S20GGV	PF3DS-4S275H20GGV	1½" deep	¾" two gang

## Double sided assemblies with wiring devices

### Commonly ordered catalog examples:

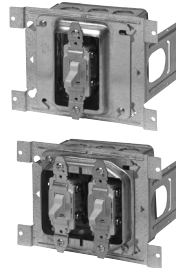
See assembly catalog numbering system at the end of this section for more information on how to construct catalog numbers for almost any customer application.

#### Single pole switch



Commercial grade single pole switch	Industrial grade single pole switch		
Cat. # Assembly with CS120V commercial grade 20A single pole switch installed	Cat. # Assembly with AH1221V industrial grade 20A single pole switch installed	4" square steel back box	Mud ring
<b>Single 20A single pole switch</b>			
PF3DS-4D58C20SPV	PF3DS-4D58I20SPV	2 <sup>1</sup> / <sub>8</sub> " deep	5 <sup>1</sup> / <sub>8</sub> " single gang
PF3DS-4S58C20SPV	PF3DS-4S58I20SPV	1 <sup>1</sup> / <sub>2</sub> " deep	5 <sup>1</sup> / <sub>8</sub> " single gang
PF3DS-4D75C20SPV	PF3DS-4D75I20SPV	2 <sup>1</sup> / <sub>8</sub> " deep	3 <sup>3</sup> / <sub>4</sub> " single gang
PF3DS-4S75C20SPV	PF3DS-4S75I20SPV	1 <sup>1</sup> / <sub>2</sub> " deep	3 <sup>3</sup> / <sub>4</sub> " single gang
<b>Double 20A single pole switch</b>			
PF3DS-4D258C20SPSPV	PF3DS-4D258I20SPSPV	2 <sup>1</sup> / <sub>8</sub> " deep	5 <sup>1</sup> / <sub>8</sub> " two gang
PF3DS-4S258C20SPSPV	PF3DS-4S258I20SPSPV	1 <sup>1</sup> / <sub>2</sub> " deep	5 <sup>1</sup> / <sub>8</sub> " two gang
PF3DS-4D275C20SPSPV	PF3DS-4D275I20SPSPV	2 <sup>1</sup> / <sub>8</sub> " deep	3 <sup>3</sup> / <sub>4</sub> " two gang
PF3DS-4S275C20SPSPV	PF3DS-4S275I20SPSPV	1 <sup>1</sup> / <sub>2</sub> " deep	3 <sup>3</sup> / <sub>4</sub> " two gang

#### Three way switch



Commercial grade three way switch	Industrial grade three way switch		
Cat. # Assembly with CS320V commercial grade 20A three way switch installed	Cat. # Assembly with AH1223V industrial grade 20A three way switch installed	4" square steel back box	Mud ring
<b>Single 20A three way switch</b>			
PF3DS-4D58C203WV	PF3DS-4D58I203WV	2 <sup>1</sup> / <sub>8</sub> " deep	5 <sup>1</sup> / <sub>8</sub> " single gang
PF3DS-4S58C203WV	PF3DS-4S58I203WV	1 <sup>1</sup> / <sub>2</sub> " deep	5 <sup>1</sup> / <sub>8</sub> " single gang
PF3DS-4D75C203WV	PF3DS-4D75I203WV	2 <sup>1</sup> / <sub>8</sub> " deep	3 <sup>3</sup> / <sub>4</sub> " single gang
PF3DS-4S75C203WV	PF3DS-4S75I203WV	1 <sup>1</sup> / <sub>2</sub> " deep	3 <sup>3</sup> / <sub>4</sub> " single gang
<b>Double 20A three way switch</b>			
PF3DS-4D258C203W3WV	PF3DS-4D258I203W3WV	2 <sup>1</sup> / <sub>8</sub> " deep	5 <sup>1</sup> / <sub>8</sub> " two gang
PF3DS-4S258C203W3WV	PF3DS-4S258I203W3WV	1 <sup>1</sup> / <sub>2</sub> " deep	5 <sup>1</sup> / <sub>8</sub> " two gang
PF3DS-4D275C203W3WV	PF3DS-4D275I203W3WV	2 <sup>1</sup> / <sub>8</sub> " deep	3 <sup>3</sup> / <sub>4</sub> " two gang
PF3DS-4S275C203W3WV	PF3DS-4S275I203W3WV	1 <sup>1</sup> / <sub>2</sub> " deep	3 <sup>3</sup> / <sub>4</sub> " two gang

- Other box types, device colors, mud ring depths, brackets and assembly configurations are available. Consult factory for details.
- To change the color of device from ivory (as shown) to white, substitute 'V' (ivory) with 'W' (white). For example: PF3DS-4D58C20DV becomes PF3DS-4D58C20DW.
- All receptacles are shipped standard ground up. Add suffix DN for ground down.
- All assemblies shipped standard with metal device protect plates.
- Pre-installed connectors available on all assembly types. Consult factory for details.

## Floor mount assemblies with wiring devices

PRE-formance floor mount assemblies – all catalog numbers contain a floor mount bracket (BBF18) which positions device at 18” on center, a 4” square box, an 8” insulated solid box ground wire with ground screw and one or two pre-wired Eaton’s Wiring Devices with leads, push-in connectors and device protect plates.

All assemblies are shown with ivory colored devices. At the end of the catalog number, replace the ‘V’ with ‘W’ for white colored device. Other device colors and types are available. Consult factory for details.



UL and cUL Listed

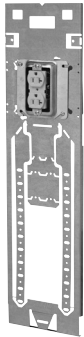


UL File No. E-324733

### Commonly ordered catalog examples:

See assembly catalog numbering system at the end of this section for more information on how to construct catalog numbers for almost any customer application.

#### Single receptacle



Commercial grade receptacle	Industrial grade receptacle	Hospital grade receptacle		
Cat. # Assembly with CR20V commercial grade 20A duplex receptacle installed	Cat. # Assembly with 5362V industrial grade 20A duplex receptacle installed	Cat. # Assembly with 8300V hospital grade 20A duplex receptacle installed	4” square steel back box	Mud ring
<b>Single 20A duplex receptacle</b>				
PF18FM-4D58C20DV	PF18FM-4D58I20DV	PF18FM-4D58H20DV	2 1/8” deep	5/8” single gang
PF18FM-4S58C20DV	PF18FM-4S58I20DV	PF18FM-4S58H20DV	1 1/2” deep	5/8” single gang
PF18FM-4D75C20DV	PF18FM-4D75I20DV	PF18FM-4D75H20DV	2 1/8” deep	3/4” single gang
PF18FM-4S75C20DV	PF18FM-4S75I20DV	PF18FM-4S75H20DV	1 1/2” deep	3/4” single gang
<b>Double 20A duplex receptacle</b>				
PF18FM-4D258C20DDV	PF18FM-4D258I20DDV	PF18FM-4D258H20DDV	2 1/8” deep	5/8” two gang
PF18FM-4S258C20DDV	PF18FM-4S258I20DDV	PF18FM-4S258H20DDV	1 1/2” deep	5/8” two gang
PF18FM-4D275C20DDV	PF18FM-4D275I20DDV	PF18FM-4D275H20DDV	2 1/8” deep	3/4” two gang
PF18FM-4S275C20DDV	PF18FM-4S275I20DDV	PF18FM-4S275H20DDV	1 1/2” deep	3/4” two gang

- Other box types, device colors, mud ring depths, brackets and assembly configurations are available. Consult factory for details.
- To change the color of device from ivory (as shown) to white, substitute ‘V’ (ivory) with ‘W’ (white). For example: PF18FM-4D58C20DV becomes PF18FM-4D58C20DW.
- All receptacles are shipped standard ground up. Add suffix DN for ground down.
- All assemblies shipped standard with metal device protect plates.
- Pre-installed connectors available on all assembly types. Consult factory for details.



## Telescoping slider assemblies with wiring devices

PRE-formance telescoping slider assemblies – all catalog numbers contain a telescoping slider bracket (BB216TS 11" - 18"), a 4" square traditional closed back box, an 8" insulated stranded box ground wire with ground screw and one or two pre-wired Eaton's Wiring Devices with leads, push-in connectors and device protect plates.



UL and cUL Listed

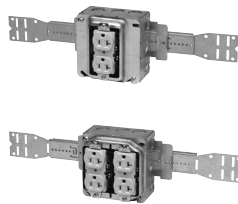


UL File No. E-324733

### Commonly ordered catalog examples:

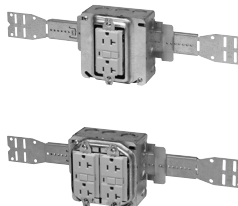
See assembly catalog numbering system at the end of this section for more information on how to construct catalog numbers for almost any customer application.

#### Duplex receptacles



Commercial grade receptacle	Industrial grade receptacle	Hospital grade receptacle	4" square steel box	Mud ring
<b>Cat. #</b> Assembly with <b>CR20V commercial grade 20A duplex receptacle installed</b>	<b>Cat. #</b> Assembly with <b>5362V industrial grade 20A duplex receptacle installed</b>	<b>Cat. #</b> Assembly with <b>8300V hospital grade 20A duplex receptacle installed</b>		
<b>Single 20A duplex receptacle</b>				
PF16TS-4DA58C20DV	PF16TS-4DA58I20DV	PF16TS-4DA58H20DV	2 1/8" deep	5/8" single gang
PF16TS-4SA58C20DV	PF16TS-4SA58I20DV	PF16TS-4SA58H20DV	1 1/2" deep	5/8" single gang
PF16TS-4DA75C20DV	PF16TS-4DA75I20DV	PF16TS-4DA75H20DV	2 1/8" deep	3/4" single gang
PF16TS-4SA75C20DV	PF16TS-4SA75I20DV	PF16TS-4SA75H20DV	1 1/2" deep	3/4" single gang
<b>Double 20A duplex receptacle</b>				
PF16TS-4DA258C20DDV	PF16TS-4DA258I20DDV	PF16TS-4DA258H20DDV	2 1/8" deep	5/8" two gang
PF16TS-4SA258C20DDV	PF16TS-4SA258I20DDV	PF16TS-4SA258H20DDV	1 1/2" deep	5/8" two gang
PF16TS-4DA275C20DDV	PF16TS-4DA275I20DDV	PF16TS-4DA275H20DDV	2 1/8" deep	3/4" two gang
PF16TS-4SA275C20DDV	PF16TS-4SA275I20DDV	PF16TS-4SA275H20DDV	1 1/2" deep	3/4" two gang

#### GFCI receptacles



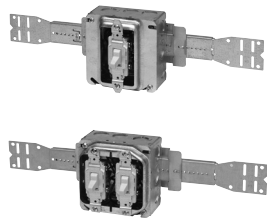
Specification grade GFCI receptacle	Hospital grade GFCI receptacle	4" square steel box	Mud ring
<b>Cat. #</b> Assembly with <b>VGf20 specification grade 20A GFCI receptacle installed</b>	<b>Cat. #</b> Assembly with <b>VGfH20V hospital grade 20A GFCI receptacle installed</b>		
<b>Single 20A GFCI receptacle</b>			
PF16TS-4DA58S20GV	PF16TS-4DA58H20GV	2 1/8" deep	5/8" single gang
PF16TS-4SA58S20GV	PF16TS-4SA58H20GV	1 1/2" deep	5/8" single gang
PF16TS-4DA75S20GV	PF16TS-4DA75H20GV	2 1/8" deep	3/4" single gang
PF16TS-4SA75S20GV	PF16TS-4SA75H20GV	1 1/2" deep	3/4" single gang
<b>Double 20A GFCI receptacle</b>			
PF16TS-4DA258S20GGV	PF16TS-4DA258H20GGV	2 1/8" deep	5/8" two gang
PF16TS-4SA258S20GGV	PF16TS-4SA258H20GGV	1 1/2" deep	5/8" two gang
PF16TS-4DA275S20GGV	PF16TS-4DA275H20GGV	2 1/8" deep	3/4" two gang
PF16TS-4SA275S20GGV	PF16TS-4SA275H20GGV	1 1/2" deep	3/4" two gang

Telescoping slider assemblies with wiring devices

Commonly ordered catalog examples:

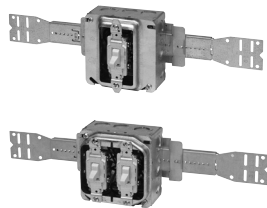
See assembly catalog numbering system at the end of this section for more information on how to construct catalog numbers for almost any customer application.

Single pole switch



Commercial grade single pole switch	Industrial grade single pole switch		
Cat. # Assembly with CS120V commercial grade 20A single pole switch installed	Cat. # Assembly with AH1221V industrial grade 20A single pole switch installed	4" square steel box	Mud ring
<b>Single 20A single pole switch</b>			
PF16TS-4DA58C20SPV	PF16TS-4DA58I20SPV	2 1/8" deep	5/8" single gang
PF16TS-4SA58C20SPV	PF16TS-4SA58I20SPV	1 1/2" deep	5/8" single gang
PF16TS-4DA75C20SPV	PF16TS-4DA75I20SPV	2 1/8" deep	3/4" single gang
PF16TS-4SA75C20SPV	PF16TS-4SA75I20SPV	1 1/2" deep	3/4" single gang
<b>Double 20A single pole switch</b>			
PF16TS-4DA258C20SPSPV	PF16TS-4DA258I20SPSPV	2 1/8" deep	5/8" two gang
PF16TS-4SA258C20SPSPV	PF16TS-4SA258I20SPSPV	1 1/2" deep	5/8" two gang
PF16TS-4DA275C20SPSPV	PF16TS-4DA275I20SPSPV	2 1/8" deep	3/4" two gang
PF16TS-4SA275C20SPSPV	PF16TS-4SA275I20SPSPV	1 1/2" deep	3/4" two gang

Three way switch



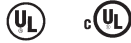
Commercial grade three way switch	Industrial grade three way switch		
Cat. # Assembly with CS320V commercial grade 20A three way switch installed	Cat. # Assembly with AH1223V industrial grade 20A three way switch installed	4" square steel box	Mud ring
<b>Single 20A three way switch</b>			
PF16TS-4DA58C203WV	PF16TS-4DA58I203WV	2 1/8" deep	5/8" single gang
PF16TS-4SA58C203WV	PF16TS-4SA58I203WV	1 1/2" deep	5/8" single gang
PF16TS-4DA75C203WV	PF16TS-4DA75I203WV	2 1/8" deep	3/4" single gang
PF16TS-4SA75C203WV	PF16TS-4SA75I203WV	1 1/2" deep	3/4" single gang
<b>Double 20A three way switch</b>			
PF16TS-4DA258C203W3WV	PF16TS-4DA258I203W3WV	2 1/8" deep	5/8" two gang
PF16TS-4SA258C203W3WV	PF16TS-4SA258I203W3WV	1 1/2" deep	5/8" two gang
PF16TS-4DA275C203W3WV	PF16TS-4DA275I203W3WV	2 1/8" deep	3/4" two gang
PF16TS-4SA275C203W3WV	PF16TS-4SA275I203W3WV	1 1/2" deep	3/4" two gang

- Other box types, device colors, mud ring depths, brackets and assembly configurations are available. Consult factory for details.
- To change the color of device from ivory (as shown) to white, substitute 'V' (ivory) with 'W' (white). For example: PF16TS-4DAC20DV becomes PF16TS-4DAC20DW.
- All receptacles are shipped standard ground up. Add suffix DN for ground down.
- All assemblies shipped standard with metal device protect plates.
- Pre-installed connectors available on all assembly types. Consult factory for details.
- Telescoping slider bracket assemblies are shipped with traditional closed back box, ground screw and stranded leads on box and devices.
- Device leads and push-in connectors are left inside the box and will not be pulled out of knockouts prior to shipment unless specified by customer.

## Multi-mount assemblies with wiring devices

PRE-formance multi-mount assemblies – all catalog numbers contain a multiple mount bracket (available in either 16” stud spanning or 24” stud spanning). Each position may contain an outlet box, an 8” insulated solid box ground wire with ground screw and one or two pre-wired Eaton’s Wiring Devices with leads, push-in connectors and device protect plates.

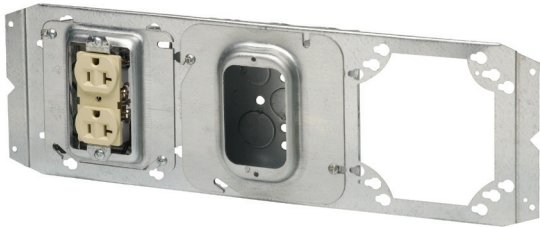
UL and cUL Listed



UL File No. E-324733

### Commonly ordered catalog examples:

See assembly catalog numbering system at the end of this section for more information on how to construct catalog numbers for almost any customer application.



#### PF3MM-4D58C20DV 5D58 X

- 3MM bracket – BB816 3-hole multiple mount bracket for 16” stud spacing
- 4MM bracket (not shown) – BB824 4-hole multiple mount bracket for 24” stud spacing



#### PF16BO-4D58C20DV X 4D258C20DDV

- 16BO bracket – BB716 open mount bracket for 16” stud spacing
- 24BO bracket (not shown) – BB724 open mount bracket for 24” stud spacing

### Commonly Ordered catalog numbers

### Description

#### PF3MM-4D58C20DV 5DN58 X

Assembly – BB816 multiple box bracket; 4” square back box with ground screw, lead and back cover; TP489 5/8” raised 1G mud ring; pre-wired CR20V 20A commercial duplex receptacle, ivory with leads, push-in connectors and protect plate (not shown); 2nd position TP525 4 1/16” Box; TP579 4 1/16” 5/8” raised 1G mud ring; no ground wire

#### PF16BO-4D58C20DV X 4D58C20DDV

Assembly – BB716 open bracket; 4” square back box with ground screw, lead and back cover; TP489 5/8” raised 1G mud ring; pre-wired CR20V 20A commercial duplex receptacle, ivory with leads, push-in connectors and protect plate; 2nd position open; 3rd position 4” Square back box with ground screw, lead and back cover; TP499 5/8” raised 2G mud ring; two pre-wired CR20V 20A commercial duplex receptacles, ivory with leads, push-in connectors and protect plates

- Other box types, device colors, mud ring depths, brackets and assembly configurations are available. Consult factory for details.
- To change the color of device from ivory (as shown) to white, substitute 'V' (ivory) with 'W' (white).
- All receptacles are shipped standard ground up. Add suffix DN for ground down.
- All assemblies shipped standard with metal device protect plates.
- Pre-installed connectors available on all assembly types. Consult factory for details.

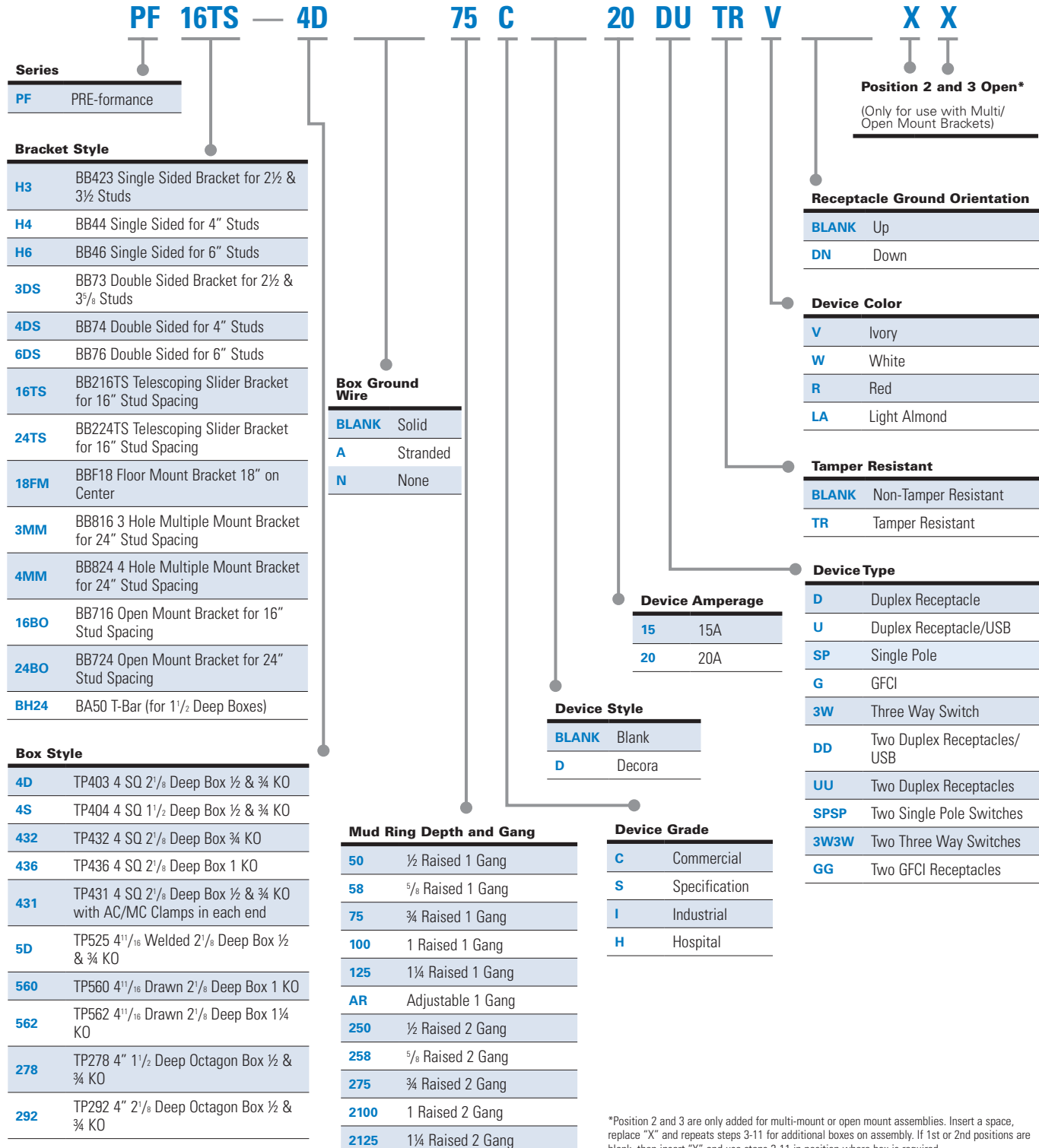
## Catalog numbering system for additional assembly configurations

### PRE-formance™ Catalog numbering system for additional assembly configurations:



Part number example

**PF16TS-4D75C20DUTRV**



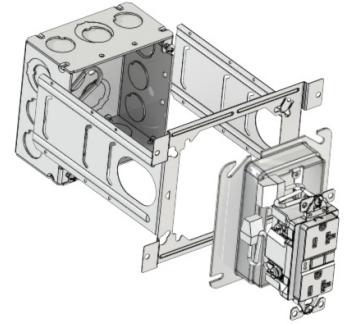
\*Position 2 and 3 are only added for multi-mount or open mount assemblies. Insert a space, replace "X" and repeats steps 3-11 for additional boxes on assembly. If 1st or 2nd positions are blank, then insert "X" and use steps 3-11 in position where box is required.

# Fast. Easy. Accurate.

## Save time and money on your next pre-fab job

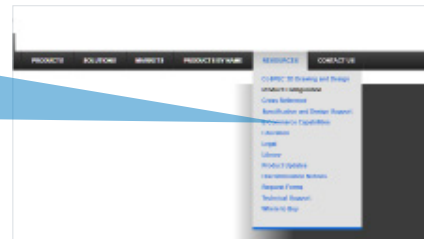
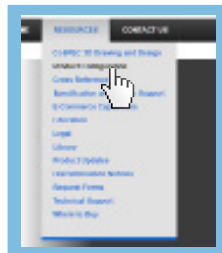
Let Crouse-Hinds configure and build your custom assemblies.

- Improve productivity
- Streamline material management
- Eliminate waste
- Optimize labor hours



### Crouse-Hinds.com/configure

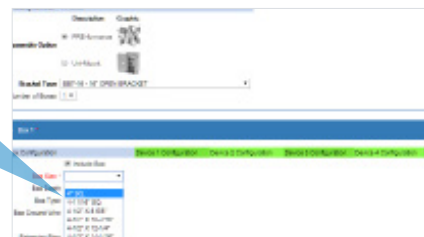
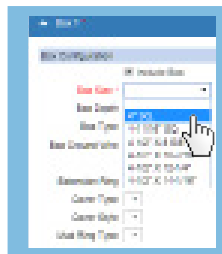
1. Go to the Crouse-Hinds.com home page.
2. From the main menu, select [Resources] then click on [Product configuration].



3. Scroll down to the [PRE-formance] icon and double click to open.



4. Configure your assemblies using the drop down menus.



5. Click on the [Save] button in the upper right to generate .xml files and save to your local hard drive before starting the next assembly.
6. Configure multiple assemblies by clicking [Reset] in the upper right for each new assembly, and save each time.
7. Repeat steps 4-6 (configuration) and save all the assemblies for your specific projects.
8. Email the .xml files to your Crouse-Hinds salesperson and they will create a quote in BidManager.
9. Please provide a list of the assemblies and quantity for each in the email so they can prepare the quote completely as possible.
10. Consider trying a complete engineered solution on your next project.

Assembly	Quantity
Duplex, white, adjustable ring, 4", slider	650
GFCI, white, adjustable ring, 4", slider	65