

# Condulet OE conduit bodies with covers

Cl. I, Div. 1 & 2, Groups C, D  
 Cl. II, Div. 1, Groups E, F, G  
 Cl. II, Div. 2, Groups F, G  
 Cl. III  
 NEMA 7CD, 9EFG

Explosionproof  
 Dust-ignitionproof

3F  
 3F

## Applications:

OE conduit bodies are installed in conduit systems within hazardous areas to:

- Protect conductors in threaded rigid conduit
- Act as pulling and splice fittings
- Interconnect lengths of conduit
- Change direction of conduit
- Provide access for maintenance and future system changes

## Features:

OE conduit outlet bodies have:

- Taper threaded hubs for ground continuity
- Smooth integral hub bushings to protect conductor insulation when pulling
- Five different hub arrangements
- Accurately machined body with blind tapped screw holes
- Most compact design of all hazardous area outlet bodies

## Certifications and compliances:

### NEC/CEC:

- Class I, Divisions 1 & 2, Groups C, D
- Class II, Division 1, Groups E, F, G
- Class II, Division 2, Groups F, G
- Class III

### UL standard:

- UL1203

### CSA standard:

- C22.2 No. 30

## Standard materials:

- Feraloy iron alloy (1/2" and 3/4" fittings)
- Copper-free aluminum (1" fittings)

## Standard finish:

- Electrogalvanized

## Options:

### Description

### Suffix

- Corro-free epoxy powder coat..... **S752**

## Size ranges:

- Hub – 1/2" to 1"

## Ordering information:

### OEC



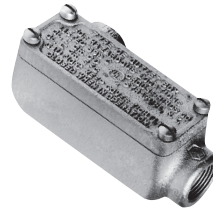
| Hub size | Cat. #  |
|----------|---------|
| 1/2"     | OEC1    |
| 3/4"     | OEC2    |
| 1"       | OEC3 SA |

### OELB



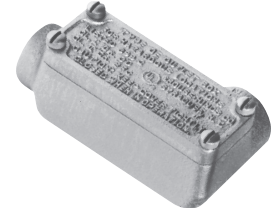
| Hub size | Cat. #   |
|----------|----------|
| 1/2"     | OELB1    |
| 3/4"     | OELB2    |
| 1"       | OELB3 SA |

### OELL



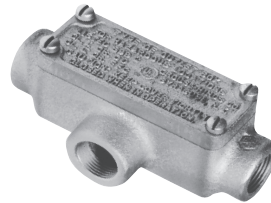
| Hub size | Cat. #   |
|----------|----------|
| 1/2"     | OELL1    |
| 3/4"     | OELL2    |
| 1"       | OELL3 SA |

### OELR



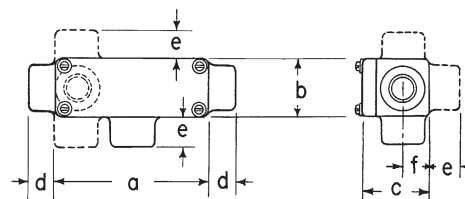
| Hub size | Cat. #   |
|----------|----------|
| 1/2"     | OELR1    |
| 3/4"     | OELR2    |
| 1"       | OELR3 SA |

### OET



| Hub size | Cat. #  |
|----------|---------|
| 1/2"     | OET1    |
| 3/4"     | OET2    |
| 1"       | OET3 SA |

## Dimensions (in inches):



| Hub size | a      | b      | c       | d       | e     | f   |
|----------|--------|--------|---------|---------|-------|-----|
| 1/2"     | 4 1/8  | 1 9/16 | 1 13/16 | 1 11/16 | 7/8   | 5/8 |
| 3/4"     | 4 5/16 | 1 7/8  | 2 1/16  | 1 11/16 | 7/8   | 3/4 |
| 1"       | 5 1/32 | 2 3/8  | 2 13/32 | 3/4     | 31/32 | 7/8 |

# Condulet EKC conduit bodies with covers

Cl. I, Div. 1 & 2, Groups C, D  
 Cl. II, Div. 1, Groups E, F, G  
 Cl. II, Div. 2, Groups F, G  
 Cl. III  
 NEMA 7CD, 9EFG

Explosionproof  
 Dust-ignitionproof

3F

## Applications:

EKC conduit outlet bodies are installed in conduit systems within hazardous areas to:

- Provide convenient opening in conduit system for pulling or splicing conductors

## Features:

EKC bodies have:

- Accurately machined body and cover mating surfaces to ensure flametight joint when properly assembled
- Extra long cover opening to facilitate pulling and splicing of conductors
- Taper threaded hubs and integral bushing for rigid threaded conduit

## Certifications and compliances:

### NEC:

#### EKC30-EKC60

- Class I, Divisions 1 & 2, Groups C, D
- Class II, Division 1, Groups E, F, G
- Class II, Division 2, Groups F, G
- Class III

#### EKC70, EKC80

- Class I, Divisions 1 & 2, Group D
- Class II, Division 1, Groups E, F, G
- Class II, Division 2, Groups F, G
- Class III

### UL standard:

- UL1203

### CSA standard:

- C22.2 No. 30

## Standard material:

- Bodies – Feraloy iron alloy

## Standard finish:

- Feraloy – electrogalvanized and aluminum acrylic paint

## Options:

### Description

### Suffix

- Corro-free epoxy powder coat..... **S752**

## Size ranges:

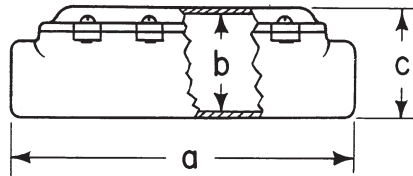
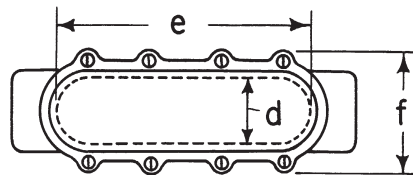
- Hub size – 1" to 3"

## Ordering information:

| Hub size | Cat. # |
|----------|--------|
| 1"       | EKC30  |
| 1 1/4"   | EKC40  |
| 1 1/2"   | EKC50  |
| 2"       | EKC60  |
| 2 1/2"   | EKC70  |
| 3"       | EKC80  |



## Dimensions (in inches):



| Hub size    | a                                | b                              | c                              | d                             | e  | f                             |
|-------------|----------------------------------|--------------------------------|--------------------------------|-------------------------------|----|-------------------------------|
| 1" - 1 1/4" | 12 <sup>5</sup> / <sub>8</sub>   | 3 <sup>1</sup> / <sub>16</sub> | 3 <sup>3</sup> / <sub>16</sub> | 1 <sup>3</sup> / <sub>4</sub> | 9  | 4                             |
| 1 1/2" - 2" | 15 <sup>15</sup> / <sub>16</sub> | 3 <sup>7</sup> / <sub>8</sub>  | 4 <sup>5</sup> / <sub>16</sub> | 2 <sup>1</sup> / <sub>2</sub> | 12 | 5                             |
| 2 1/2" - 3" | 21 <sup>3</sup> / <sub>4</sub>   | 5 <sup>1</sup> / <sub>2</sub>  | 6                              | 3 <sup>3</sup> / <sub>4</sub> | 16 | 6 <sup>5</sup> / <sub>8</sub> |