

Applications:

LBD mogul bodies are installed at 90° bends in rigid conduit to:

- Act as pull outlets for conductors that are stiff due to large size or type of insulation
- Make 90° bends in conduit system, allowing straight pull in either direction
- Provide for conduit service entrance to buildings
- Provide for conductor entrance to motors
- Provide access to wiring for maintenance and future expansion

Features:

LBD bodies have:

- Cover openings on an angle permitting conductors to be pulled straight through hubs from either direction
- Domed covers to permit easy conductor bends (relieves strain on insulation)
- Cover and gasket furnished
- Taper tapped hubs with integral bushings

Certifications and compliances:

- UL standard: 514B
- Fed. Spec.: W-C-586d
- CSA standard: 22.2 No. 18

Standard materials:

- Body and cover – Feraloy iron alloy
- Gasket – neoprene

Standard finishes:

- Feraloy iron alloy – ½" to 4" sizes: electrogalvanized and aluminum acrylic paint; 5" and 6" sizes: zinc chromate primer and aluminum lacquer
- Neoprene – natural

Options:

- Description** **Suffix**
- Material – copper-free aluminum **SA**
Available in select sizes

Options for mogul (available on sizes 2½" to 6" only):

- Body factory drilled and tapped with ½" NPT female thread to accept CD1 drain **WD**

Ordering information:



| Hub size | Cat. # | Hub size | Cat. # | Hub size | Cat. # |
|----------|---------|----------|----------------------|----------|----------|
| ½" | LBD1100 | 1¼" | LBD4400 ^A | 3½" | LBD9900 |
| ¾" | LBD2200 | 1½" | LBD5500 | 4" | LBD10900 |
| 1" | LBD3300 | 2" | LBD6600 | 5" | LBD012 |
| | | 2½" | LBD7700 | 6" | LBD014 |
| | | 3" | LBD8800 | | |

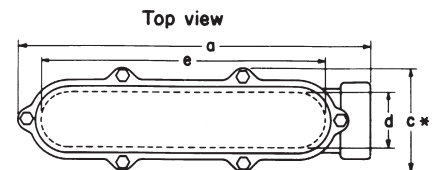
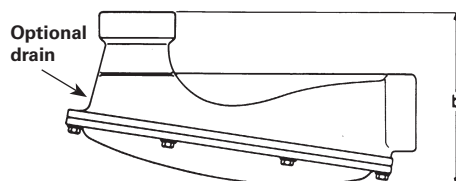
Replacement rubber gaskets for above sizes

| Hub size | Cat. # | Hub size | Cat. # | Hub size | Cat. # |
|----------|----------|----------|----------|----------|----------|
| ½" | GASK680R | 1¼" | GASK683R | 3½" | GASK989R |
| ¾" | GASK681R | 1½" | GASK684R | 4" | GASK989R |
| 1" | GASK682R | 2" | GASK684R | 5" | GASK687R |
| | | 2½" | GASK990R | 6" | GASK688R |
| | | 3" | GASK990R | | |

Replacement cover assembly with hardware

| Hub size | Cat. # | Hub size | Cat. # | Hub size | Cat. # |
|----------|--------|----------|--------|----------|--------|
| ½" | LBD100 | 1¼" | LBD400 | 3" | LBD800 |
| ¾" | LBD200 | 1½" | LBD600 | 3½" | LBD900 |
| 1" | LBD300 | 2" | LBD600 | 4" | LBD900 |
| | | 2½" | LBD800 | 5" | LBD120 |
| | | | | 6" | LBD140 |

Dimensions (in inches):



* For 1/2-3/4-1 sizes only
"c" dimension is outside width (no bosses)

| Cat. # | Hub size | a | b | c | d | e |
|-----------------|----------|----------------------------------|---------------------------------|---------------------------------|---------------------------------|---------------------------------|
| LBD1100 | ½" | 5 | 2 ⁵ / ₁₆ | 1 ⁵ / ₁₆ | 1 | 3 ¹¹ / ₃₂ |
| LBD2200 | ¾" | 6 ¹ / ₄ | 2 ⁷ / ₁₆ | 1 ⁹ / ₁₆ | 1 ¹ / ₄ | 4 ¹⁷ / ₃₂ |
| LBD3300 | 1" | 6 ³ / ₄ | 2 ¹⁵ / ₁₆ | 1 ¹³ / ₁₆ | 1 ³ / ₈ | 4 ¹¹ / ₃₂ |
| LBD4400 | 1¼" | 8 ⁵ / ₈ | 4 ¹ / ₄ | 3 ¹ / ₂ | 1 ¹³ / ₁₆ | 7 ⁷ / ₁₆ |
| LBD5500 | 1½" | 12 ⁷ / ₁₆ | 5 ⁷ / ₁₆ | 4 ⁵ / ₈ | 2 ⁵ / ₈ | 10 ⁷ / ₈ |
| LBD6600 | 2" | 12 ⁷ / ₁₆ | 5 ⁷ / ₁₆ | 4 ⁵ / ₈ | 2 ⁵ / ₈ | 10 ⁷ / ₈ |
| LBD7700 | 2½" | 19 ¹¹ / ₁₆ | 9 ⁷ / ₁₆ | 5 ⁵ / ₈ | 3 | 15 ³ / ₄ |
| LBD8800 | 3" | 19 ¹¹ / ₁₆ | 9 ⁷ / ₁₆ | 5 ⁵ / ₈ | 3 | 15 ³ / ₄ |
| LBD9900 (iron) | 3½" | 20 ⁷ / ₈ | 10 ⁷ / ₈ | 7 ³ / ₄ | 4 ³ / ₄ | 19 ⁷ / ₈ |
| LBD10900 (iron) | 4" | 20 ⁷ / ₈ | 10 ⁷ / ₈ | 7 ³ / ₄ | 4 ³ / ₄ | 19 ⁷ / ₈ |
| LBD9900 (-SA) | 3½" | 27 ¹³ / ₁₆ | 11 ⁷ / ₈ | 7 ⁷ / ₈ | 4 | 24 |
| LBD10900 (-SA) | 4" | 27 ¹³ / ₁₆ | 11 ⁷ / ₈ | 7 ⁷ / ₈ | 4 | 24 |
| LBD012 | 5" | 32 ⁷ / ₁₆ | 12 ¹ / ₂ | 8 ⁵ / ₈ | 5 ⁵ / ₈ | 30 |
| LBD014 | 6" | 41 ¹ / ₂ | 15 | 9 ³ / ₄ | 7 | 39 |

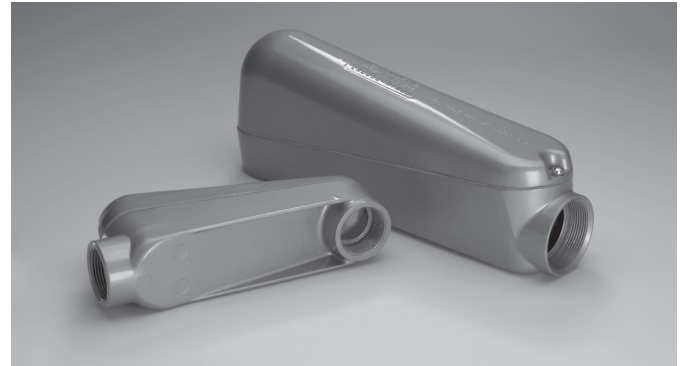
^ANot available in aluminum.

Applications:

- Used as a chamber for containing heavy duty conductors
- For use as a chamber for containing a 90° turn in large stiff conductors to change conductor direction or to enter buildings
- For use as a pull box for pulling large conductors
- For use as a chamber for making splices and taps
- Can be used as an accessible opening to accommodate future changes of the system

Features:

- Large dome cover permits easy, straight through pull
- Dimension from center line of back hub to bushing of end hub exceeds six times the trade diameter of the conduit
- Tapered threads provide easy assembly, tight construction
- Heavy duty machine screws for cover
- Cover gasket provides long, dependable service and protection against the elements, such as fuel, oil and water
- Smooth design and finish make handling easy and complement any construction job



Certifications and compliances:

- UL standard: 514A
- UL File No. E-15022
- NEC Article 314
- CSA standard: C22.2 No. 18
- CEC: 22.1

Standard materials:

- Body and cover – die cast copper-free aluminum
- Gasket – Bitaflex-87 elastomeric

Standard finish:

- Corrosion-resistant metallic paint

Ordering information:

| Cat. # | Size | Dimensions | | | | Max. wire size | Max. no. of conductors | Unit qty. | Wt. lbs. per 100 |
|---------|---------------------------------|------------------------------------|-----------------------------------|---------------------------------|-----------------------------------|----------------|------------------------|-----------|------------------|
| | | A | B | C | D | | | | |
| LBNEC3 | 1" | 9 ²¹ / ₃₂ " | 3 ¹¹ / ₃₂ " | 2 ¹ / ₂ " | 7 ¹ / ₂ " | 2 AWG | 4 #3 | 2 | 146 |
| LBNEC4 | 1 ¹ / ₄ " | 9 ²¹ / ₃₂ " | 3 ¹¹ / ₃₂ " | 2 ¹ / ₂ " | 7 ¹ / ₂ " | 2 AWG | 3 #2 | 2 | 132 |
| LBNEC5 | 1 ¹ / ₂ " | 14 ¹⁷ / ₃₂ " | 5 ¹³ / ₃₂ " | 3 ¹ / ₈ " | 12 ¹ / ₂₀ " | 250 kcmil | 3 #1/0 | 1 | 258 |
| LBNEC6 | 2" | 14 ¹⁷ / ₃₂ " | 5 ¹³ / ₃₂ " | 3 ¹ / ₈ " | 12 ¹ / ₂₀ " | 250 kcmil | 3 #4/0 | 1 | 230 |
| LBNEC7 | 2 ¹ / ₂ " | 22" | 7 ¹¹ / ₃₂ " | 4 ¹ / ₂ " | 18 ⁵ / ₃₂ " | 500 kcmil | 300 kcmil | 1 | 1003 |
| LBNEC8 | 3" | 22" | 7 ¹¹ / ₃₂ " | 4 ¹ / ₂ " | 18 ⁵ / ₃₂ " | 500 kcmil | 500 kcmil | 1 | 938 |
| LBNEC9 | 3 ¹ / ₂ " | 28 ²⁷ / ₃₂ " | 8 ¹⁵ / ₁₆ " | 5 ¹ / ₂ " | 24 ¹ / ₈ " | 900 kcmil | 500 kcmil | 1 | 2158 |
| LBNEC10 | 4" | 28 ²⁷ / ₃₂ " | 8 ¹⁵ / ₁₆ " | 5 ¹ / ₂ " | 24 ¹ / ₈ " | 900 kcmil | 500 kcmil | 1 | 2060 |

Dimensions (in inches):

