

Pro

ProJBX JUSN/wd



FEATURES

- Non-metallic junction box.
- High temperature silicone gasket provides a watertight seal.
- Two heavy duty mounting pads.
- Internal grounding lug with cup washer for stranded wiring.
- Four threaded entries with removable knockouts.
- Silicone gasket provides a watertight seal.

APPLICATIONS

- Watertight & corrosive requirements
- Pharmaceutical & additives formulation & processing
- Waste water treatment plants
- Pulp & paper production
- Food & beverage processing facilities

APPROVALS

- Conforms to IP66
- ABS

TECHNICAL SPECIFICATIONS

BOX/COVER

Reinforced polyethylene terephthalate (PET).

HARDWARE

Stainless steel.

GASKET

One piece silicone.

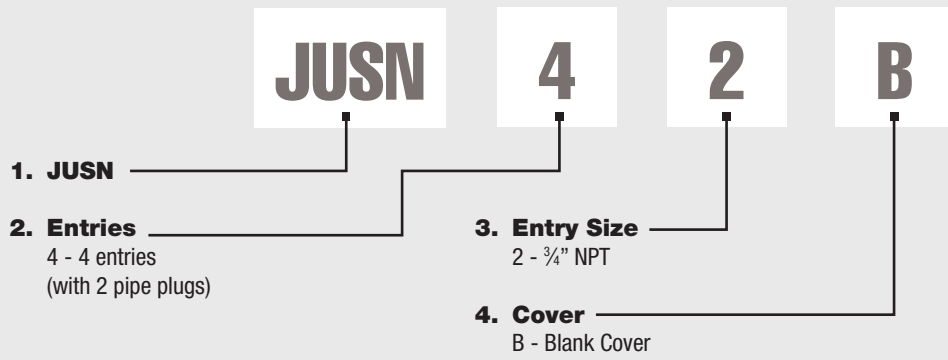
ENTRIES

Four 3/4" NPT threaded entries with knockouts.

MOUNTING

Surface via two maximum 1/4" mounting bolts (not included).

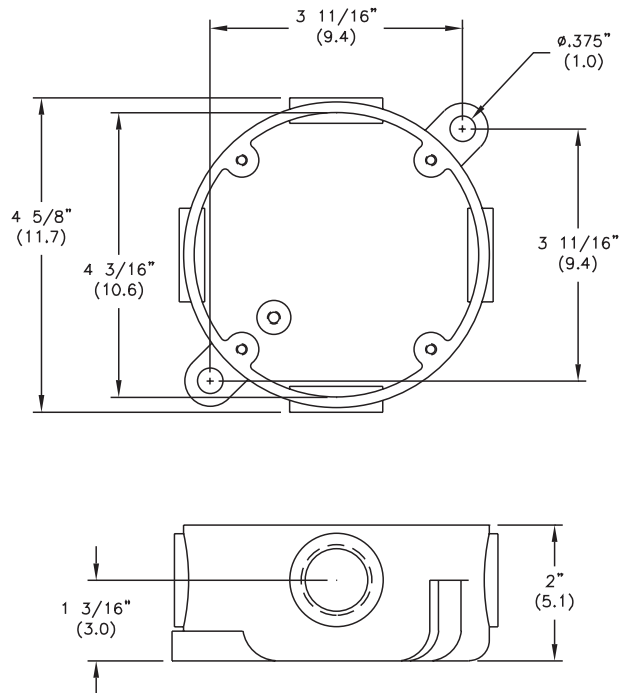
ORDERING REFERENCES



SPARE PARTS

| Part No. | Description | Lbs | Kg |
|----------|-------------|------|------|
| JUS-NBC | Blank Cover | 0.50 | 0.23 |
| JUS-G | Gasket | 0.10 | 0.05 |

DIMENSIONS



Dimensions in inches (cm)