

GUA outlet bodies and luminaire hanger covers

Cl. I, Div. 1 & 2, Groups C, D
 Cl. II, Div. 1, Groups E, F, G
 Cl. II, Div. 2, Groups F, G
 Cl. III

Explosionproof
 Dust-ignitionproof

7L

Applications:

GUA outlet bodies are used:

- With luminaire canopies, union hub and nipple covers for mounting EVA, EVM, EVLP and EVF series luminaires

Features:

- A threaded cover opening in the side of the canopy permits access to the interior for making splices or taps
- The luminaire with its conduit stem and canopy is wired before installation, which eliminates wire twisting when the canopy is screwed into the outlet body
- Union hub covers permit the cover to be screwed into the body without twisting wire leads
- All covers have set screws to lock the conduit stem or EC flexible luminaire support firmly to the cover

Certifications and compliances:

NEC/CEC:

- Class I, Groups C, D
- Class II, Groups E, F, G
- Class III

UL standard:

- UL1203

CSA standard:

- C22.2 No. 30

Standard materials:

Outlet bodies:

- GUA – Feraloy iron alloy
- GUFX – copper-free aluminum

Luminaire hanger covers:

- GUA068 – Feraloy iron alloy
- GUA0687, GUA0672 – copper-free aluminum

Standard finishes:

- Feraloy iron alloy – electrogalvanized and aluminum acrylic paint
- Copper-free aluminum – natural

Size ranges:

- Bodies – 1/2" to 1" hubs
- Canopies – 1/2", 3/4" and 1 1/4" luminaire stem
- Union hub and nipple covers – 1/2" and 3/4" luminaire stem

Options:

Description

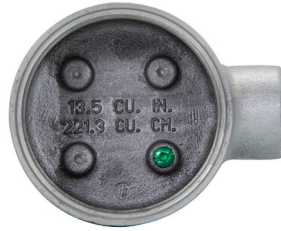
- Corro-free epoxy enamel..... **S752**

Suffix

S752

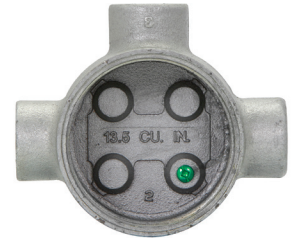
Ordering information:

GUA



Hub size	Cat. #
1/2"	GUA160
3/4"	GUA260
1"	GUA360

GUAT



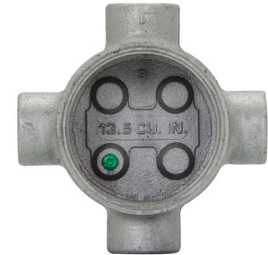
Hub size	Cat. #
1/2"	GUAT160
3/4"	GUAT260
1"	GUAT360

GUAC



Hub size	Cat. #
1/2"	GUAC160
3/4"	GUAC260
1"	GUAC360

GUAX



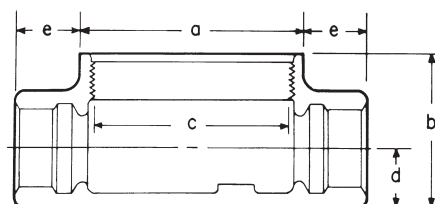
Hub size	Cat. #
1/2"	GUAX160
3/4"	GUAX260
1"	GUAX360

GUAL



Hub size	Cat. #
1/2"	GUAL160
3/4"	GUAL260
1"	GUAL360

Dimensions (in inches):



Hub size	a	b	c	d	e
1/2"	3 1/2	2	3	5/8	7/8
3/4"	3 1/2	2	3	3/4	7/8
1"	3 1/2	2 5/16	3	7/8	1

7L

GUA outlet bodies and luminaire hanger covers

Cl. I, Div. 1 & 2, Groups C, D
 Cl. II, Div. 1, Groups E, F, G
 Cl. II, Div. 2, Groups F, G
 Cl. III

Explosionproof
 Dust-ignitionproof

7L

Ordering information:

GUFX

(For use with GUA Form 6 covers)



Hub size	Cat. #
1/2"	GUFX160
3/4"	GUFX260

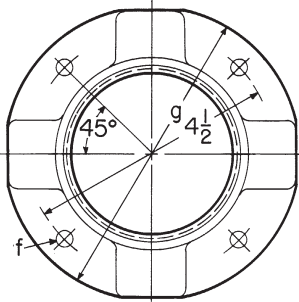
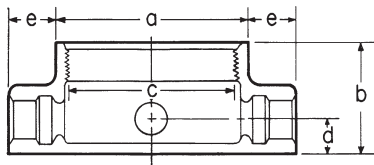
Luminaire hanger covers

(For GUA and GUF junction boxes)



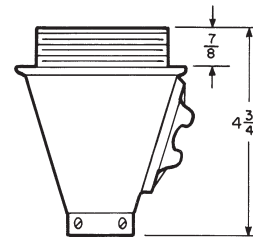
Nom. dia. cover opening	Luminaire stem size	Cat. # Luminaire canopy	Cat. # Luminaire cover union hub	Cat. # Nipple cover
3	3/4"	GUA068	GUA0687	GUA0672

Dimensions (in inches):

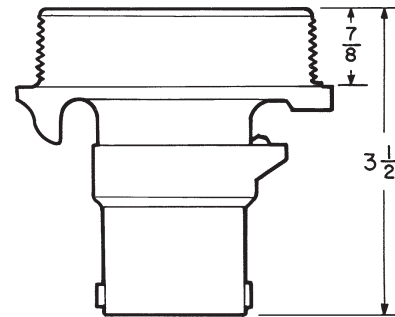


GUF

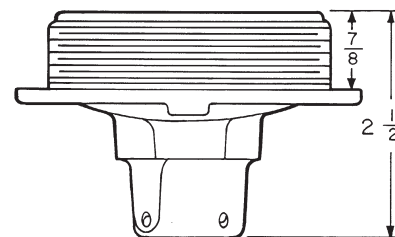
Hub size	a	b	c	d	e	f	g
1/2"	3 1/2	2	3	5/8	7/8	5/16	5 5/8
3/4"	3 1/2	2	3	3/4	7/8	5/16	5 5/8
1"	3 1/2	2 5/8	3	7/8	1	5/16	5 5/8



Hanger covers
GUA068



GUA0687



GUA0672

7L