

# Condulet GUA conduit outlet boxes with covers

Cl. I, Div. 1 & 2, Groups B, C, D  
 Cl. II, Div. 1, Groups E, F, G  
 Cl. II, Div. 2, Groups F, G  
 Cl. III  
 NEMA 3, 4, 7CD, 9EFG

Explosionproof  
 Dust-ignitionproof  
 Raintight  
 Wet Locations

3F

## Applications:

GUA conduit outlet boxes are installed within hazardous area conduit systems to:

- Protect conductors in threaded rigid conduit
- Act as pull and splice boxes
- Connect lengths of conduit
- Change conduit direction
- Provide access to conductors for maintenance and future system changes
- Act as mounting outlets for fixtures (with appropriate covers)
- Act as sealing fittings (with appropriate covers)

## Features:

GUA conduit boxes have:

- Neoprene o-ring standard to meet NEMA 4 requirements
- Cast ears on cover to permit easy removal and tightening
- Internal green ground screw #8
- Four standard mounting pads except for boxes with bottom hubs
- Threaded cover openings
- Ten different hub arrangements
- Taper threaded hubs to provide grounding continuity
- Smooth integral hub bushing protects conductor insulation when pulling
- Surface covers furnished with boxes
- Sealing covers, dome covers and fixture hanger covers are available
- Cover threads are 12 pitch standard; 16 pitch on select aluminum shapes and sizes

## Certifications and compliances:

### NEC/CEC:

- Class I, Divisions 1 & 2, Groups B, C, D
- Class II, Division 1, Groups E, F, G
- Class II, Division 2, Groups F, G
- Class III

### UL standard:

- UL1203

### ANSI standard:

- C33.27

### CSA standard:

- C22.2 No. 30

### Environmental ratings:

- NEMA/EEMAC 3, 4

## Standard materials:

- Bodies – Feraloy iron alloy
- Covers – copper-free aluminum

## Standard finishes:

- Feraloy iron alloy – electrogalvanized and aluminum acrylic paint
- Aluminum – natural

## Options:

### Description

- Bodies – copper-free aluminum ..... SA  
*Available in select shapes and sizes*
- Covers – Feraloy iron alloy..... WOD  
*Electrogalvanized and aluminum acrylic paint finish*
- GUA Form 6 (with 3" cover opening)..... VW  
*Available with optional cover with viewing window*
- Corro-free epoxy powder coat..... S752
- To order box less cover..... Add '0' to end of catalog number
- Factory installed terminal blocks mounted to DIN rail ..... DIN12-122  
*See page 56 for ordering information*
- Factory installed terminal blocks directly mounted to outlet box..... TB14-112  
*See page 56 for ordering information*

**Note:** When assembled with sealing type cover, GUA outlet boxes provide adequate sealing for 40% fill in hazardous areas – Class I, Groups C, D; Class II, Groups E, F, G; and Class III. Seals can be made in either horizontal or vertical positions. Use Chico® A sealing compound or Chico SpeedSeal™ only. Conductor splices or connections must not be made in enclosures where sealing compound is to be used per NEC.

## Ordering information:

### GUA



Hub size	Cover opening dia.	Cat. #
1/2"	2"	GUA14
3/4"	2"	GUA24
1/2"	3"	GUA16
3/4"	3"	GUA26 <sup>A</sup>
1"	3"	GUA36
1 1/4"	3 5/8"	GUA47 <sup>B</sup>
1 1/2"	5"	GUA59

### GUAB



Hub size	Cover opening dia.	Cat. #
1/2"	2"	GUAB14 <sup>B</sup>
3/4"	2"	GUAB24
1/2"	3"	GUAB16 <sup>A</sup>
3/4"	3"	GUAB26 <sup>A</sup>
1"	3"	GUAB36 <sup>A</sup>
1 1/4"	3 5/8"	GUAB47 <sup>B</sup>
1 1/2"	5"	GUAB59 <sup>A</sup>
2"	5"	GUAB69 <sup>A</sup>

### GUAC



Hub size	Cover opening dia.	Cat. #
1/2"	2"	GUAC14 <sup>B</sup>
3/4"	2"	GUAC24 <sup>B</sup>
1/2"	3"	GUAC16 <sup>A</sup>
3/4"	3"	GUAC26 <sup>A</sup>
1"	3"	GUAC36 <sup>A</sup>
1 1/4"	3 5/8"	GUAC47 <sup>B</sup>
1 1/4"	5"	GUAC49 <sup>A</sup>
1 1/2"	5"	GUAC59 <sup>A</sup>
2"	5"	GUAC69 <sup>A</sup>

### GUAD



Hub size	Cover opening dia.	Cat. #
1/2"	2"	GUAD14
3/4"	2"	GUAD24
1/2"	3"	GUAD16
3/4"	3"	GUAD26 <sup>B</sup>
1"	3"	GUAD36 <sup>B</sup>
1 1/4"	5"	GUAD49

<sup>A</sup> May be ordered with suffix 'SA'; listed for Class I, Divisions 1 & 2, Groups B, C and D, Class II, Division 1, Groups E, F, G and Class III. Covers have 16 pitch threads.

<sup>B</sup> May be ordered with suffix 'SA' (copper-free aluminum).

# Condulet GUA conduit outlet boxes with covers

Cl. I, Div. 1 & 2, Groups B, C, D  
 Cl. II, Div. 1, Groups E, F, G  
 Cl. II, Div. 2, Groups F, G  
 Cl. III  
 NEMA 3, 4, 7CD, 9EFG

Explosionproof  
 Dust-ignitionproof  
 Raintight  
 Wet Locations

**3F**  
3F

## Ordering information (continued):

### GUAL



Hub size	Cover opening dia.	Cat. #
1/2"	2"	GUAL14 <b>D</b>
3/4"	2"	GUAL24 <b>D</b>
1/2"	3"	GUAL16 <b>C</b>
3/4"	3"	GUAL26 <b>C</b>
1"	3"	GUAL36 <b>C</b>
1 1/4"	3 5/8"	GUAL47 <b>D</b>
1 1/2"	5"	GUAL49 <b>C</b>
1 1/2"	5"	GUAL59 <b>C</b>
2"	5"	GUAL69 <b>C</b>

### GUAN



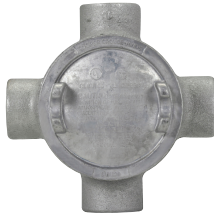
Hub size	Cover opening dia.	Cat. #
1/2"	2"	GUAN14
3/4"	2"	GUAN24
1/2"	3"	GUAN16
3/4"	3"	GUAN26
1"	3"	GUAN36
1 1/4"	3 5/8"	GUAN47
1 1/2"	5"	GUAN59
2"	5"	GUAN69

### GUAT



Hub size	Cover opening dia.	Cat. #
1/2"	2"	GUAT14 <b>D</b>
3/4"	2"	GUAT24 <b>D</b>
1/2"	3"	GUAT16 <b>C</b>
3/4"	3"	GUAT26 <b>C</b>
1"	3"	GUAT36 <b>C</b>
1"	3 5/8"	GUAT37
1 1/4"	3 5/8"	GUAT47 <b>D</b>
1 1/4"	5"	GUAT49 <b>C</b>
1 1/2"	5"	GUAT59 <b>C</b>
2"	5"	GUAT69 <b>C</b>

### GUAX



Hub size	Cover opening dia.	Cat. #
1/2"	2"	GUAX14
3/4"	2"	GUAX24
1/2"	3"	GUAX16 <b>C</b>
3/4"	3"	GUAX26 <b>C</b>
1"	3"	GUAX36 <b>C</b>
1"	3 5/8"	GUAX37 <b>D</b>
1 1/4"	3 5/8"	GUAX47 <b>D</b>
1 1/4"	5"	GUAX49 <b>C</b>
1 1/2"	5"	GUAX59 <b>C</b>
2"	5"	GUAX69 <b>C</b>

### GUAM



Hub size	Cover opening dia.	Cat. #
1/2"	2"	GUAM14
3/4"	2"	GUAM24
1/2"	3"	GUAM16
3/4"	3"	GUAM26
1"	3"	GUAM36
1 1/4"	3 5/8"	GUAM47
2"	5"	GUAM69

### GUAW



Hub size	Cover opening dia.	Cat. #
1/2"	2"	GUAW14
3/4"	2"	GUAW24 <b>D</b>
1/2"	3"	GUAW16
3/4"	3"	GUAW26 <b>D</b>

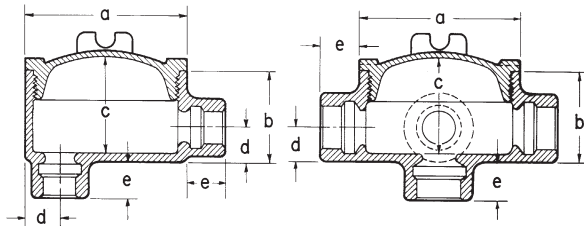
**C** May be ordered with suffix 'SA'; listed for Class I, Divisions 1 & 2, Groups B, C and D, Class II, Division 1, Groups E, F, G and Class III. Covers have 16 pitch threads.  
**D** May be ordered with suffix 'SA' (copper-free aluminum).

# Condulet GUA conduit outlet boxes with covers

Cl. I, Div. 1 & 2, Groups B, C, D  
 Cl. II, Div. 1, Groups E, F, G  
 Cl. II, Div. 2, Groups F, G  
 Cl. III  
 NEMA 3, 4, 7CD, 9EFG

Explosionproof  
 Dust-ignitionproof  
 Raintight  
 Wet Locations

## Dimensions (in inches):



GUAB only

All others

## GUA, GUAD, GUAM, GUAW, GUAX

Cat. #	a	b	c	d
14	2 <sup>1</sup> / <sub>2</sub>	1 <sup>13</sup> / <sub>16</sub>	1 <sup>3</sup> / <sub>4</sub>	<sup>5</sup> / <sub>8</sub>
24	2 <sup>1</sup> / <sub>2</sub>	2	2	<sup>3</sup> / <sub>4</sub>
16	3 <sup>1</sup> / <sub>2</sub>	2	2 <sup>1</sup> / <sub>16</sub>	<sup>5</sup> / <sub>8</sub>
26	3 <sup>1</sup> / <sub>2</sub>	2	2 <sup>1</sup> / <sub>16</sub>	<sup>3</sup> / <sub>4</sub>
36	3 <sup>1</sup> / <sub>2</sub>	2 <sup>5</sup> / <sub>16</sub>	2 <sup>3</sup> / <sub>8</sub>	<sup>7</sup> / <sub>8</sub>
37	4 <sup>1</sup> / <sub>4</sub>	2 <sup>11</sup> / <sub>16</sub>	2 <sup>5</sup> / <sub>16</sub>	<sup>7</sup> / <sub>8</sub>
47	4 <sup>1</sup> / <sub>4</sub>	2 <sup>11</sup> / <sub>16</sub>	2 <sup>5</sup> / <sub>8</sub>	1 <sup>3</sup> / <sub>32</sub>
49	5 <sup>3</sup> / <sub>4</sub>	4 <sup>1</sup> / <sub>32</sub>	4 <sup>3</sup> / <sub>16</sub>	1 <sup>3</sup> / <sub>32</sub>
59	5 <sup>3</sup> / <sub>4</sub>	4 <sup>1</sup> / <sub>32</sub>	4 <sup>3</sup> / <sub>16</sub>	1 <sup>7</sup> / <sub>32</sub>
69	5 <sup>3</sup> / <sub>4</sub>	4 <sup>1</sup> / <sub>32</sub>	4 <sup>3</sup> / <sub>16</sub>	1 <sup>1</sup> / <sub>2</sub>

Hub size	Dimension 'e' length
<sup>1</sup> / <sub>2</sub> " - <sup>3</sup> / <sub>4</sub> "	<sup>7</sup> / <sub>8</sub>
1" - 1 <sup>1</sup> / <sub>4</sub> "	1
1 <sup>1</sup> / <sub>2</sub> " - 2"	1 <sup>1</sup> / <sub>16</sub>

## GUAC, GUAT

Cat. #	a	b	c	d
14	2 <sup>1</sup> / <sub>2</sub>	2 <sup>1</sup> / <sub>4</sub>	2 <sup>3</sup> / <sub>16</sub>	<sup>5</sup> / <sub>8</sub>
24	2 <sup>1</sup> / <sub>2</sub>	2	2	<sup>3</sup> / <sub>4</sub>
16	3 <sup>1</sup> / <sub>2</sub>	2	2 <sup>1</sup> / <sub>16</sub>	<sup>5</sup> / <sub>8</sub>
26	3 <sup>1</sup> / <sub>2</sub>	2	2 <sup>1</sup> / <sub>16</sub>	<sup>3</sup> / <sub>4</sub>
36	3 <sup>1</sup> / <sub>2</sub>	2 <sup>5</sup> / <sub>16</sub>	2 <sup>3</sup> / <sub>8</sub>	<sup>7</sup> / <sub>8</sub>
37	4 <sup>1</sup> / <sub>4</sub>	2 <sup>11</sup> / <sub>16</sub>	2 <sup>5</sup> / <sub>16</sub>	<sup>7</sup> / <sub>8</sub>
47	4 <sup>1</sup> / <sub>4</sub>	2 <sup>11</sup> / <sub>16</sub>	2 <sup>5</sup> / <sub>8</sub>	1 <sup>3</sup> / <sub>32</sub>
49	5 <sup>3</sup> / <sub>4</sub>	4 <sup>1</sup> / <sub>32</sub>	4 <sup>3</sup> / <sub>16</sub>	1 <sup>3</sup> / <sub>32</sub>
59	5 <sup>3</sup> / <sub>4</sub>	4 <sup>1</sup> / <sub>32</sub>	4 <sup>3</sup> / <sub>16</sub>	1 <sup>7</sup> / <sub>32</sub>
69	5 <sup>3</sup> / <sub>4</sub>	4 <sup>1</sup> / <sub>32</sub>	4 <sup>3</sup> / <sub>16</sub>	1 <sup>1</sup> / <sub>2</sub>

## GUAN

Cat. #	a	b	c	d
14	2 <sup>1</sup> / <sub>2</sub>	2 <sup>1</sup> / <sub>8</sub>	2 <sup>1</sup> / <sub>16</sub>	<sup>5</sup> / <sub>8</sub>
24	2 <sup>1</sup> / <sub>2</sub>	2 <sup>5</sup> / <sub>16</sub>	2 <sup>1</sup> / <sub>4</sub>	<sup>3</sup> / <sub>4</sub>
16	3 <sup>1</sup> / <sub>2</sub>	2	2 <sup>1</sup> / <sub>16</sub>	<sup>5</sup> / <sub>8</sub>
26	3 <sup>1</sup> / <sub>2</sub>	2	2 <sup>1</sup> / <sub>16</sub>	<sup>3</sup> / <sub>4</sub>
36	3 <sup>1</sup> / <sub>2</sub>	2 <sup>5</sup> / <sub>16</sub>	2 <sup>3</sup> / <sub>8</sub>	<sup>7</sup> / <sub>8</sub>
47	4 <sup>1</sup> / <sub>4</sub>	2 <sup>11</sup> / <sub>16</sub>	2 <sup>5</sup> / <sub>8</sub>	1 <sup>3</sup> / <sub>32</sub>
59	5 <sup>3</sup> / <sub>4</sub>	4 <sup>1</sup> / <sub>32</sub>	4 <sup>3</sup> / <sub>16</sub>	1 <sup>7</sup> / <sub>32</sub>
69	5 <sup>3</sup> / <sub>4</sub>	4 <sup>1</sup> / <sub>32</sub>	4 <sup>3</sup> / <sub>16</sub>	1 <sup>1</sup> / <sub>2</sub>

## GUAB, GUAL

Cat. #	a	b	c	d
14	2 <sup>1</sup> / <sub>2</sub>	2 <sup>1</sup> / <sub>4</sub>	2 <sup>3</sup> / <sub>16</sub>	<sup>5</sup> / <sub>8</sub>
24	2 <sup>1</sup> / <sub>2</sub>	2 <sup>1</sup> / <sub>2</sub>	2 <sup>1</sup> / <sub>16</sub>	<sup>3</sup> / <sub>4</sub>
16	3 <sup>1</sup> / <sub>2</sub>	2	2 <sup>1</sup> / <sub>16</sub>	<sup>5</sup> / <sub>8</sub>
26	3 <sup>1</sup> / <sub>2</sub>	2	2 <sup>1</sup> / <sub>16</sub>	<sup>3</sup> / <sub>4</sub>
36	3 <sup>1</sup> / <sub>2</sub>	2 <sup>5</sup> / <sub>16</sub>	2 <sup>3</sup> / <sub>8</sub>	<sup>7</sup> / <sub>8</sub>
47	4 <sup>1</sup> / <sub>4</sub>	2 <sup>11</sup> / <sub>16</sub>	2 <sup>5</sup> / <sub>8</sub>	1 <sup>3</sup> / <sub>32</sub>
49	5 <sup>3</sup> / <sub>4</sub>	4 <sup>1</sup> / <sub>32</sub>	4 <sup>3</sup> / <sub>16</sub>	1 <sup>3</sup> / <sub>32</sub>
59	5 <sup>3</sup> / <sub>4</sub>	4 <sup>1</sup> / <sub>32</sub>	4 <sup>3</sup> / <sub>16</sub>	1 <sup>7</sup> / <sub>32</sub>
69	5 <sup>3</sup> / <sub>4</sub>	4 <sup>1</sup> / <sub>32</sub>	4 <sup>3</sup> / <sub>16</sub>	1 <sup>1</sup> / <sub>2</sub>

Ⓔ May be ordered with suffix 'SA'; listed for Class I, Divisions 1 & 2, Groups B, C and D, Class II, Division 1, Groups E, F, G and Class III. Covers have 16 pitch threads.

# Condulet GUA conduit outlet boxes

## Covers and accessories

### Applications:

Threaded covers, canopies and extensions are used:

- To provide a seal in hazardous areas (sealing cover); *see note below*
- To mount pendant lighting fixtures such as EVA series (fixture canopy)
- To mount EVA pendant lighting fixtures on cover which is then screwed into outlet box without twisting conductors (union hub cover)
- To mount pendant lighting fixtures on cover which is then screwed into outlet box as above, for wiring after fixture stem is installed (nipple cover)
- To provide means of increasing outlet box depth (threaded extension)

### Features:

- Surface covers are supplied with GUA boxes
- Sealing cover has removable plug for filling enclosure with sealing compound after installation; sealing cover meets 40% fill requirement of the NEC; *see note below*
- Fixture canopy has a threaded cover in its side to provide access for making splices or taps; fixture with its conduit stem and canopy can be assembled and wired before installation and conductors can be spliced in canopy after it has been screwed into the body
- Cover threads are 12 pitch unless otherwise specified

### Standard materials:

- Surface and dome covers, union hub covers, nipple covers – copper-free aluminum
- Sealing covers, fixture canopies, threaded extensions – Feraloy iron alloy

### Standard finishes:

- Aluminum – natural
- Feraloy iron alloy – electrogalvanized and aluminum acrylic paint

### Options:

- |                                     |               |
|-------------------------------------|---------------|
| <b>Description</b>                  | <b>Suffix</b> |
| • Corro-free epoxy powder coat..... | <b>S752</b>   |
| • Iron surface cover.....           | <b>WOD</b>    |

### Size ranges:

- Fixture stems – 3/4"
- Body openings – 2" to 5"

**Note:** Depth of sealing compound in body must satisfy requirements of NEC Section 501.15(C)(3). Splices and taps in sealing fittings are prohibited by NEC.

### Ordering information:

#### GUA threaded extension



Cover opening dia.	Ext. depth	Cat. #
3"	1 1/4"	GUA0631



GUA cover opening	Cat. # Replacement o-ring gasket
2"	GASK1713
3"	GASK1151
3 5/8"	GASK1589
5"	GASK925

#### Surface cover



Cover opening dia.	Thread pitch	Cat. #
2"	12	GUA04
3"	12	GUA06
3"	16	GUA06 GB ①
3 5/8"	12	GUA07
5"	12	GUA09
5"	16	GUA09 GB ①

#### Dome cover



Cover opening dia.	Ext. depth	Thread pitch	Cat. #
2"	2"	12	GUA047
3"	2"	12	GUA067
3 5/8"	2"	12	GUA077
3 5/8"	4"	12	GUA0716
5"	4"	12	GUA514
5"	10"	12	GUA5110

#### Sealing cover



Cover opening dia.	Thread pitch	Cat. #
2"	12	GUA041
3"	12	GUA062
3"	16	GUA062 GB ①
3 5/8"	12	GUA072
5"	12	GUA092

#### Nipple cover



Cover opening dia.	Fixt. stem size	Thread pitch	Cat. #
3"	3/4"	12	GUA0672

#### Fixture cover Union hub type



Cover opening dia.	Fixt. stem size	Thread pitch	Cat. #
3"	3/4"	12	GUA0687

#### Fixture canopy



Cover opening dia.	Fixt. stem size	Thread pitch	Cat. #
3"	3/4"	12	GUA068

① GUA covers with suffix 'GB' are used with Group B rated GUA aluminum bodies identified with symbols A B or C D on pages 52-53.

# Condulet GUA conduit outlet boxes

## Factory installed terminal block ordering guide

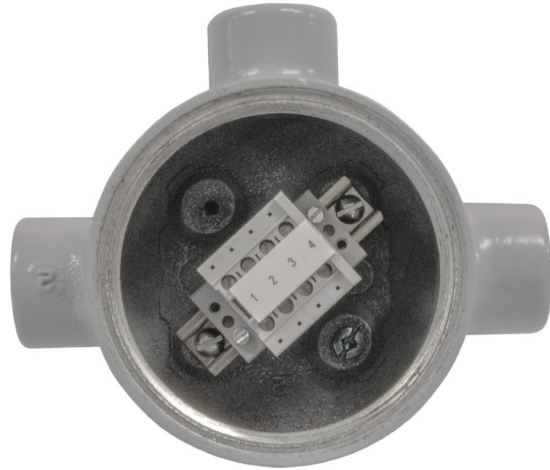
### Ordering information:

#### DIN rail mounted terminal blocks

##### Electrical specifications:

30A, 150V, AWG 26-10

Cat. #	Description
DIN12	DIN rail mounted, 2 terminal blocks GUA (shapes C, L, T, X) Form 4, 6, 7 & 9 cover diameter openings
DIN13	DIN rail mounted, 3 terminal blocks GUA (shapes C, L, T, X) Form 4, 6, 7 & 9 cover diameter openings
DIN14	DIN rail mounted, 4 terminal blocks GUA (shapes C, L, T, X) Form 6, 7 & 9 cover diameter openings
DIN16	DIN rail mounted, 6 terminal blocks GUA (shapes C, L, T, X), GUAN26 Form 6, 7 & 9 cover diameter openings
DIN18	DIN rail mounted, 8 terminal blocks GUA (shapes C, L, T, X) Form 7 & 9 cover diameter opening
DIN112	DIN rail mounted, 12 terminal blocks GUA (shapes C, L, T, X) Form 9 cover diameter opening



#### Direct mounted terminal blocks

##### Electrical specifications:

30A, 300V, AWG 26-10

Cat. #	Description
TB14	Direct mounted terminal block, 4 poles GUA (shapes C, L, T, X) Form 6, 7 & 9 cover diameter openings
TB16	Direct mounted terminal block, 6 poles GUA (shapes C, L, T, X) Form 6, 7 & 9 cover diameter openings
TB18	Direct mounted terminal block, 8 poles GUA (shapes C, L, T, X) Form 7 & 9 cover diameter opening
TB112	Direct mounted terminal block, 12 poles GUA (shapes C, L, T, X) Form 9 cover diameter opening

