

Condulet device boxes, covers and gaskets – stainless steel

Condulet® stainless steel device boxes deliver power where you need it, saving you time and money throughout the life of your facility.

Superior resistance to corrosion and heat, combined with unmatched strength, make stainless steel Condulet bodies and boxes a long-term solution for even the most extreme environments.

Applications:

Cast device boxes are installed in conduit systems to:

- Accommodate wiring devices
- Act as pull boxes for conductors in a conduit system
- Provide openings to make splices and taps in conductors
- Provide access to conductors for maintenance and future system changes
- Connect conduit systems

Features:

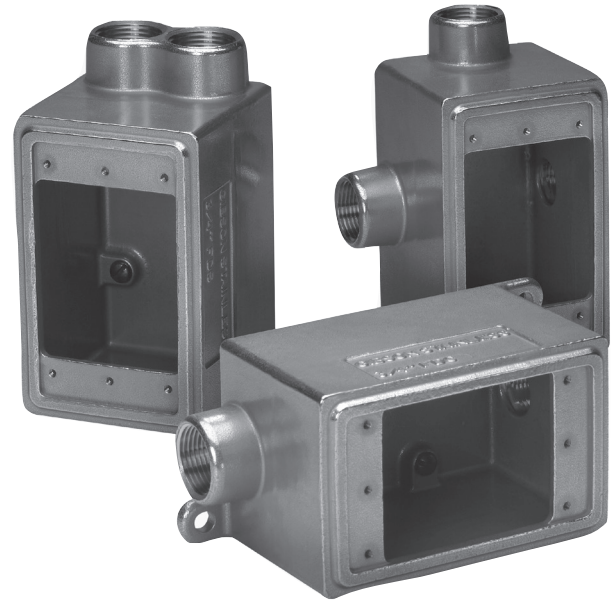
- Self-healing properties of stainless steel fittings help reduce the penetration of rust/corrosion and eliminate damage to the fitting
- Stainless steel fittings retain their strength in extreme heat and extreme cold conditions
- Fitting surface is easy to maintain and keep clean
- Easy cleaning capabilities make these fittings perfect for food processing and other hygienic areas where wash downs are common
- Superior strength and durability greatly reduce replacement of fittings – this will lower your total cost of ownership and increase your return on investment
- Stainless steel fittings do not require harsh environment-damaging cleaners to keep them looking like new
- Internal green grounding screw standard
- Tapered threads for protection of wire insulation
- Wide selection of covers available
- Single or double conduit entry
- Ample wiring room provided for easy installations

Certifications and compliances:

- UL standard: 514A
- CSA standard: C22.2 No. 18.1-04
- Raintight – when installed with cover and gasket

Standard materials:

- Bodies and covers – 316 stainless steel
- Cover screws – 316 stainless steel
- Gasket – neoprene



Accessories (ordered separately):

Description

- | Description | Cat. # |
|--|-----------|
| • $\frac{3}{4}$ " to $\frac{1}{2}$ " reducer | RDU303029 |

See Section 4F for more information

Condulet device boxes, covers and gaskets – stainless steel

Dimension

A	Length of box
B	Overall length (including hubs)
C	Width of box
D	Overall width (including hubs)
E	Height of box
F	Overall height (including hubs)

Ordering information – device boxes:

FD



Cat. #	Hub size	A	B	C	D	E	F
FD2SS	3/4"	4.63	5.41	2.94	2.94	3.03	3.03

FDC



Cat. #	Hub size	A	B	C	D	E	F
FDC2SS	3/4"	4.63	6.19	2.94	2.94	3.03	3.03

FDS



Cat. #	Hub size	A	B	C	D	E	F
FDS2SS	3/4"	4.63	5.41	2.94	2.94	3.03	3.03

FDA



Cat. #	Hub size	A	B	C	D	E	F
FDA2SS	3/4"	4.63	4.63	2.94	2.94	3.03	3.80

FDX



Cat. #	Hub size	A	B	C	D	E	F
FDX2SS	3/4"	4.63	6.19	2.94	4.50	3.03	3.03

Ordering information – device box covers and gaskets:

Blank cover



Cat. #
DS7000BC

Blank formed cover



Cat. #
DS7000BF

Switch formed cover



Cat. #
DS7000SF

Receptacle formed cover



Cat. #
DS7000RF