

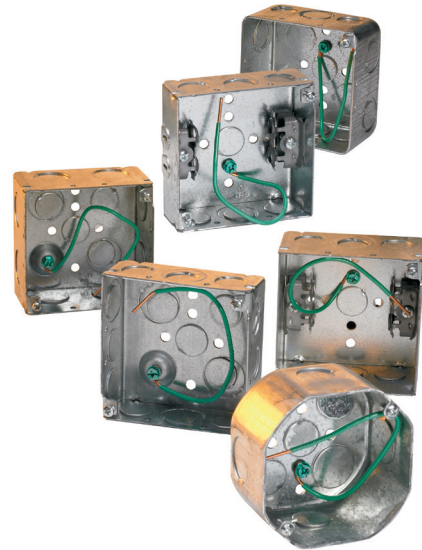
Basic assemblies

BOXES WITH PRE-INSTALLED GROUND SCREW & PIGTAIL

Boxes with pre-installed ground screw and pigtail provide a simple, readily available way to meet grounding and bonding requirements for metal boxes. Includes the 4" or 4¹¹/₁₆" square box with ground screw and lead installed ^A.

Certifications and compliances:

- UL Listed and cUL Listed
- UL File No. E-23156



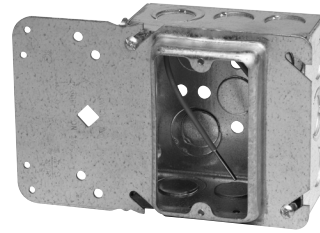
Cat. #	Description Pre-fabricated box, cover, ground screw & lead assembly	Capacity cu. in.	Unit qty.	Wt. lbs. per 100
For conduit				
TP403PF	4D 1/2" and 3/4" KO welded box with ground screw and lead	30.3	25	84
TP404PF	4" square 1/2" and 3/4" KO welded box with ground screw and lead	21.0	25	72
TP431PF	4" square MCI box with ground screw and lead	-	25	91
TP454PF	4" square MCI box with ground screw and lead	22.0	25	92
TP288PF	4D octagon box 1/2" KO with ground screw and lead	21.5	25	64
TP290PF	4D octagon box 3/4" KO with ground screw and lead	21.5	25	64
TP292PF	4D octagon box 1/2" and 3/4" KO with ground screw and lead	21.5	25	64
TP338PF	4 octagon MCI cable outlet box s set 1/2" bracket with ground screw and lead	21.5	25	82
TP367PF	4D octagon box for AC/MC S bracket with ground screw and lead	15.5	25	100
TP438PF	4D drawn box 1/2" and 3/4" concentric KO with ground screw and lead	30.3	25	84
TP451PF	4D welded box with VMS bracket with ground screw and lead	30.3	25	96
TP456PF	4" square MCI box with f bracket with ground screw and lead	22.0	25	92
TP521PF	4 ¹¹ / ₁₆ " 2 ¹ / ₈ " deep welded box with ground screw and lead	44.0	25	115
TP556PF	4 ¹¹ / ₁₆ " 2 ¹ / ₈ " deep drawn box with ground screw and lead	42.0	25	104

^AStandard ground pigtail is #8 - 32 ground screw with 8" insulated No. 12 copper wire.

Basic assemblies

UNI-MOUNT™ ASSEMBLIES

Uni-Mount assemblies combine the patented Uni-Mount cover (mounting method and mud ring, all in one) to a 4" square box with ground screw and lead installed to simplify ordering, receiving and improve job site speed.



Certifications and compliances:

- UL Listed and cUL Listed
- UL File No. E-23156

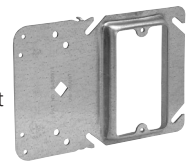


Pre-fabricated box features:

- Uni-Mount provides a secure box support and features a built-in plaster ring
- Can be field assembled with outlet box for power applications or used without a box for low voltage applications
- Pre-fabricated Uni-Mount is available with most popular outlet boxes with a choice of 1/2", 5/8" or 3/4" raised cover and includes ground screw and lead
- Rigid bracket design eliminates the need for far side support
- Guide tabs ensure alignment on studs

Uni-Mount features:

- Uni-Mount combines the features of a mounting device plate with those of a box support, giving you one universal plate for all of your needs; specifically designed for use with metal or wood studs
- New and improved Uni-Mount incorporates four small holes on the left side (support side) of the bracket; these holes allow for the attachment of box mounting brackets to allow for use of both sides of the stud
- The holes are strategically located to accept the B-Line BB423 bracket; additionally, the viewing hole has been significantly enlarged (and is now diamond shaped) to make it even easier to find mark lines on the stud



TP404
1 1/2" deep – welded
22.0" cubic capacity



TP403
2 1/8" deep – welded
30.3" cubic capacity



TP414
1 1/2" deep – drawn
21.0" cubic capacity



TP434
2 1/8" deep – welded
30.3" cubic capacity



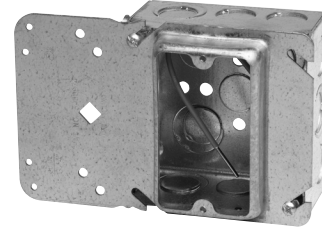
TP436
2 1/8" deep – welded
30.3" cubic capacity

Cat. #	Description Pre-fabricated box, cover, ground screw & lead assembly	Capacity cu. in.	Unit qty.	Wt. lbs. per 100
For conduit				
TP30404PF	1 1/2" deep welded box, 1/2" raised single gang Uni-Mount cover, ground screw and lead	25.8	25	115
TP30414PF	1 1/2" deep drawn box, 1/2" raised single gang Uni-Mount cover, ground screw and lead	24.8	25	110
TP31404PF	1 1/2" deep welded box, 5/8" raised single gang Uni-Mount cover, ground screw and lead	26.3	25	118
TP31414PF	1 1/2" deep drawn box, 5/8" raised single gang Uni-Mount cover, ground screw and lead	25.3	25	113
TP32404PF	1 1/2" deep welded box, 3/4" raised single gang Uni-Mount cover, ground screw and lead	27.5	25	122
TP32414PF	1 1/2" deep drawn box, 3/4" raised single gang Uni-Mount cover, ground screw and lead	26.5	25	117
TP35404PF	1 1/2" deep welded box, 1/2" raised two gang Uni-Mount cover, ground screw and lead	28.0	25	110
TP35414PF	1 1/2" deep drawn box, 1/2" raised two gang Uni-Mount cover, ground screw and lead	27.0	25	105
TP36404PF	1 1/2" deep welded box, 5/8" raised two gang Uni-Mount cover, ground screw and lead	30.0	25	124
TP36414PF	1 1/2" deep drawn box, 5/8" raised two gang Uni-Mount cover, ground screw and lead	29.0	25	119
TP37404PF	1 1/2" deep welded box, 3/4" raised two gang Uni-Mount cover, ground screw and lead	31.0	25	126
TP37414PF	1 1/2" deep drawn box, 3/4" raised two gang Uni-Mount cover, ground screw and lead	30.0	25	121
TP30403PF	2 1/8" deep welded box, 1/2" raised single gang Uni-Mount cover, ground screw and lead	34.1	25	107
TP30434PF	2 1/8" deep drawn box, 1/2" raised single gang Uni-Mount cover, ground screw and lead	34.1	25	127
TP31403PF	2 1/8" deep welded box, 5/8" raised single gang Uni-Mount cover, ground screw and lead	34.6	25	110
TP31434PF	2 1/8" deep drawn box, 5/8" raised single gang Uni-Mount cover, ground screw and lead	34.6	25	130
TP31436PF	2 1/8" deep welded box, 5/8" raised single gang Uni-Mount cover, ground screw and lead	26.3	25	130
TP32403PF	2 1/8" deep welded box, 3/4" raised single gang Uni-Mount cover, ground screw and lead	35.8	25	114
TP32434PF	2 1/8" deep drawn box, 3/4" raised single gang Uni-Mount cover, ground screw and lead	35.8	25	134
TP35403PF	2 1/8" deep welded box, 1/2" raised two gang Uni-Mount cover, ground screw and lead	36.3	25	102
TP35434PF	2 1/8" deep drawn box, 1/2" raised two gang Uni-Mount cover, ground screw and lead	36.3	25	122
TP36403PF	2 1/8" deep welded box, 5/8" raised two gang Uni-Mount cover, ground screw and lead	38.3	25	116
TP36434PF	2 1/8" deep drawn box, 5/8" raised two gang Uni-Mount cover, ground screw and lead	38.3	25	136
TP37403PF	2 1/8" deep welded box, 3/4" raised two gang Uni-Mount cover, ground screw and lead	39.3	25	118
TP37434PF	2 1/8" deep drawn box, 3/4" raised two gang Uni-Mount cover, ground screw and lead	39.3	25	138

Basic assemblies

UNI-MOUNT™ ASSEMBLIES (CONTINUED)

Uni-Mount assemblies combine the patented Uni-Mount cover (mounting method and mud ring, all in one) to a 4" square box with ground screw and lead installed to simplify ordering, receiving and improve job site speed.



Cat. #	Description Pre-fabricated box, cover, ground screw & lead assembly	Capacity cu. in.	Unit qty.	Wt. lbs. per 100
For armored & metal-clad (MCI) cable - clamps in each end				
TP30454PF	1 1/2" deep welded box assembled to 1/2" raised single gang Uni-Mount cover	24.8	25	114
TP31454PF	1 1/2" deep welded box assembled to 5/8" raised single gang Uni-Mount cover	25.3	25	117
TP32454PF	1 1/2" deep welded box assembled to 3/4" raised single gang Uni-Mount cover	26.5	25	121
TP35454PF	1 1/2" deep welded box assembled to 1/2" raised two gang Uni-Mount cover	27.0	25	109
TP36454PF	1 1/2" deep welded box assembled to 5/8" raised two gang Uni-Mount cover	29.0	25	123
TP37454PF	1 1/2" deep welded box assembled to 3/4" raised two gang Uni-Mount cover	30.0	25	125
TP30431PF	2 1/8" deep welded box assembled to 1/2" raised single gang Uni-Mount cover	34.1	25	134
TP31431PF	2 1/8" deep welded box assembled to 5/8" raised single gang Uni-Mount cover	34.6	25	137
TP32431PF	2 1/8" deep welded box assembled to 3/4" raised single gang Uni-Mount cover	35.8	25	141
TP35431PF	2 1/8" deep welded box assembled to 1/2" raised two gang Uni-Mount cover	36.3	25	129
TP36431PF	2 1/8" deep welded box assembled to 5/8" raised two gang Uni-Mount cover	38.3	25	143
TP37431PF	2 1/8" deep welded box assembled to 3/4" raised two gang Uni-Mount cover	39.3	25	145
Cat. #	Description Pre-fabricated box, cover, ground screw & lead assembly	Capacity cu. in.	Unit qty.	Wt. lbs. per 100
For non-metallic cable - clamps in each end				
TP30444PF	1 1/2" deep welded box assembled to 1/2" raised single gang Uni-Mount cover	24.8	25	114
TP31444PF	1 1/2" deep welded box assembled to 5/8" raised single gang Uni-Mount cover	25.3	25	117
TP32444PF	1 1/2" deep welded box assembled to 3/4" raised single gang Uni-Mount cover	26.5	25	121
TP35444PF	1 1/2" deep welded box assembled to 1/2" raised two gang Uni-Mount cover	27.0	25	109
TP36444PF	1 1/2" deep welded box assembled to 5/8" raised two gang Uni-Mount cover	29.0	25	123
TP37444PF	1 1/2" deep welded box assembled to 3/4" raised two gang Uni-Mount cover	30.0	25	125
TP30450PF	2 1/8" deep welded box assembled to 1/2" raised single gang Uni-Mount cover	34.1	25	134
TP31450PF	2 1/8" deep welded box assembled to 5/8" raised single gang Uni-Mount cover	34.6	25	137
TP32450PF	2 1/8" deep welded box assembled to 3/4" raised single gang Uni-Mount cover	35.8	25	141
TP35450PF	2 1/8" deep welded box assembled to 1/2" raised two gang Uni-Mount cover	36.3	25	129
TP36450PF	2 1/8" deep welded box assembled to 5/8" raised two gang Uni-Mount cover	38.3	25	143
TP37450PF	2 1/8" deep welded box assembled to 3/4" raised two gang Uni-Mount cover	39.3	25	145

Additional Uni-Mount/box configurations available. Consult factory for details.
Remove the 'PF' in catalog number for boxes without ground screw and lead.
For stranded wire, replace 'PF' with 'PFA'.