

Eaton® Power Xpert® Gateway PXGX PDP Card

Quick Start Instructions

Package Contents

- Eaton® Power Xpert Gateway PXGX PDP Card
- USB Cable
- Quick Start Instructions



Powering Business Worldwide

Help Desk Numbers

United States	1-800-843-9433 or 1-919-870-3028
Canada	1-800-461-9166 ext 260
All Other Countries	Call you local service representative

www.eaton.com/powerxpert

Eaton, Power Xpert, and X-Slot are registered trademarks of Eaton Corporation or its subsidiaries and affiliates. Google Chrome is a trademark of Google Inc. Linux is a registered trademark of Linus Torvalds. Microsoft and Windows are registered trademarks of Microsoft Corporation. Mozilla and Firefox are registered trademarks of the Mozilla Foundation. All other trademarks are property of their respective companies.

©Copyright 2010 Eaton Corporation, Raleigh, NC, USA. All rights reserved. No part of this document may be reproduced in any way without the express written approval of Eaton Corporation.

Section 1 Installation Checklist

1. Verify that all of the following items are available:
 - Power Xpert® Gateway PXGX PDP Card package contents (see front cover)
 - Phillips screwdriver
 - Available USB port on a computer running Microsoft® Windows®
 - Web browser (Microsoft Internet Explorer®, Mozilla® Firefox®, or Google Chrome™ are recommended)
2. If you are going to use Dynamic Host Configuration Protocol (DHCP), provide your local network administrator with the card's MAC address. The MAC address is located on a label on the bottom of the card.
 - MAC Address _____
3. If you are not going to use DHCP to provide any of the settings listed below, contact your local network administrator for the settings. Select DHCP or enter the values for manual configuration in the table below:

Item	Either Provided by DHCP*	Or Manual Configuration
IPv4	<input type="checkbox"/>	Card IP Address: _____ Netmask: _____ Gateway: _____
DNS – Name Servers	<input type="checkbox"/>	Name Server #1: _____ Name Server #2: _____ Name Server #3: _____
DNS – Domain	<input type="checkbox"/>	Domain: _____

* The network administrator normally sets up the DHCP server to provide a static IP address each time the card makes a DHCP request.

4. If you need e-mail functionality, obtain the SMTP IP address or host name. If using the SMTP host name, verify that you also have the Name Server IP address (see Step 3).
 - SMTP (mail server) IP Address
or Host Name _____

Section 2 Install the Card

The hot-swappable PXGX Power Distribution Product (PDP) Card can be installed without turning off the Power Distribution Unit (PDU)/Remote Power Panel (RPP)/Rack Power Module (RPM)/Energy Management System Upgrade Kit (EMS-UGK)/Power Distribution Rack (PDR) or disconnecting the load.

To install the PXGX PDP Card:

1. Verify that all six DIP switches on the card are in the off position (see Figure 1).

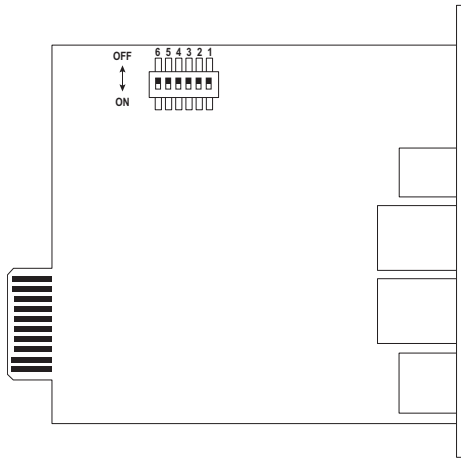


Figure 1. Verify DIP Switches are OFF

2. Remove the X-Slot® cover from the PDU/RPP/RPM/EMS-UGK/PDR. Retain the screws.
- Note:** If there is another card already installed with an attached communication cable, disconnect the cable and then remove the card.
3. If not already done, record the MAC address for future reference (see the Checklist).
 4. To prevent electrostatic discharge (ESD), place one hand on a metal surface such as the PDU/RPP/RPM/EMS-UGK/PDR panel.

- Slide the card into the open slot and secure with the screws removed in Step 2 (see Figure 2 and Figure 3).

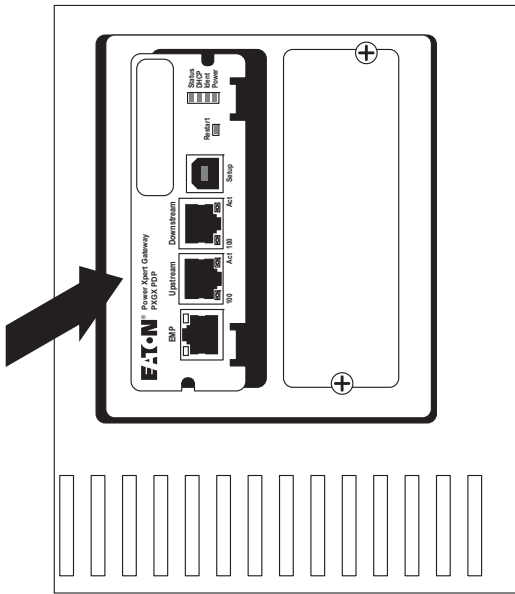


Figure 2. Install the PXGX PDP Card

6. Connect an active Ethernet cable (not supplied) to the Upstream Ethernet connector on the PXGX PDP Card (see Figure 3).

If you are connecting to another PXGX PDP Card or other Ethernet device, connect an Ethernet cable (not supplied) to the Downstream Ethernet connector on the PXGX PDP Card.

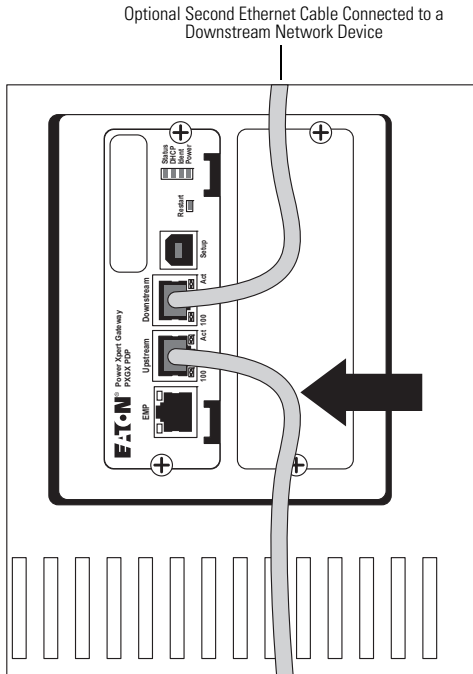


Figure 3. Secure the Card and Install the Ethernet Cable

Section 3 Connect the Card to the Computer

To connect the card to the computer:

1. Go to www.eaton.com/pxgx and download the powerxpert.inf file. Note the path where you put the file.
2. Plug the USB cable into the Setup port on the card (see Figure 4).

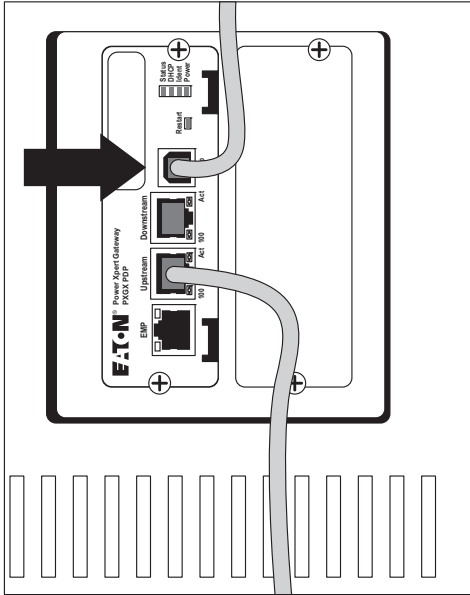


Figure 4. Install the USB Cable

3. Plug the other end of the USB cable into the USB port on the computer. The Windows operating system detects new hardware.

4. The steps for installing the USB driver software are determined by the type of operating system running on your computer:
 - For Windows XP, go to Step 5.
 - For Windows 7, go to Step 6.
5. The Found New Hardware Wizard – Welcome window opens (see Figure 5). Continue to Section 4, "Install the USB Driver Software (Windows XP)" on page 7.



Figure 5. Found New Hardware Wizard – Welcome Window

6. If a message displays indicating that the device driver software was not successfully installed, click **Ignore**.
7. Continue to Section 5, "Install the USB Driver Software (Windows 7)" on page 15.

Section 4 Install the USB Driver Software (Windows XP)

To install the USB driver software on a computer running Windows XP:

1. Select **No, not this time** and click **Next**. The Found New Hardware Wizard – Install Software window opens (see Figure 6).

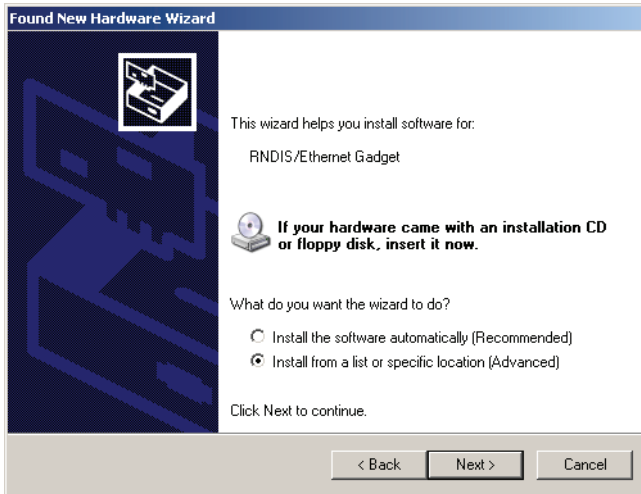


Figure 6. Found New Hardware Wizard – Install Software Window

2. Select **Install from a list or specific location (Advanced)** and click **Next**. The Found New Hardware Wizard – Installation Options window opens (see Figure 7).

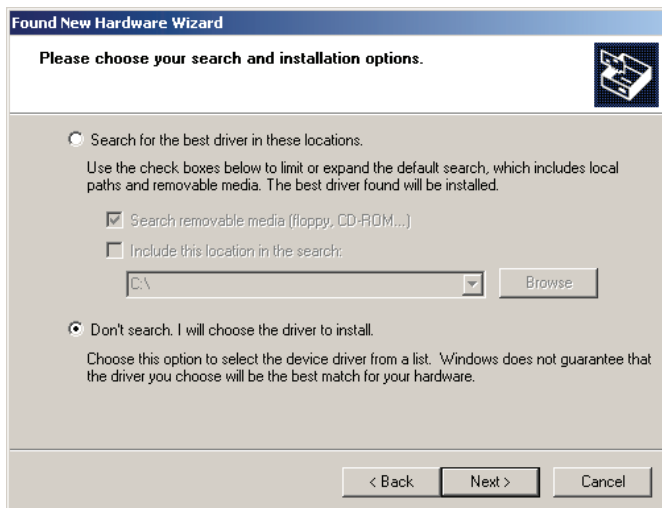


Figure 7. Found New Hardware Wizard – Installation Options Window

3. Select **Don't search. I will choose the driver to install.** and click **Next**. The Found New Hardware Wizard – Hardware Type window opens (see Figure 8).

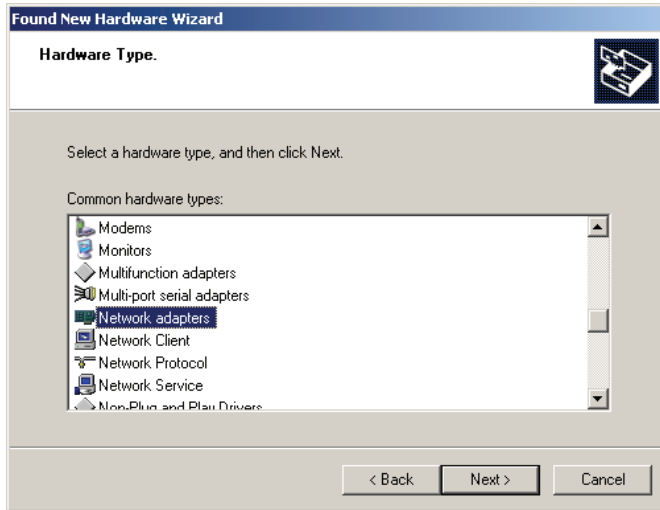


Figure 8. Found New Hardware Wizard – Hardware Type Window

4. Select **Network adapters** and click **Next**. The Found New Hardware Wizard – Select Network Adapter window opens (see Figure 9).

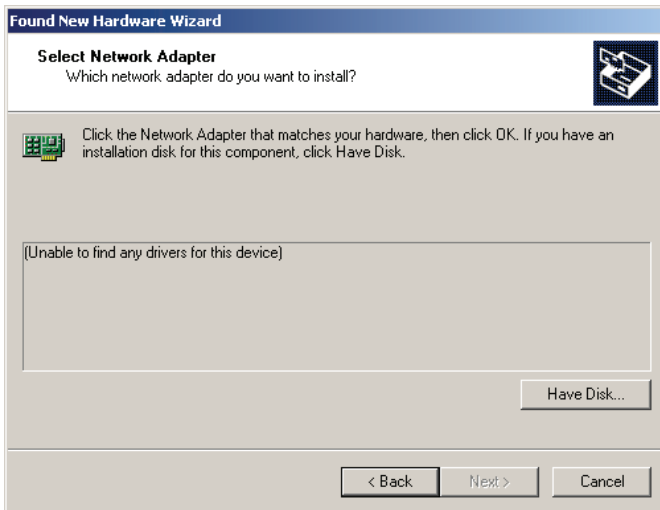


Figure 9. Found New Hardware Wizard – Select Network Adapter Window

5. Select **Have Disk**. The Install From Disk window opens (see Figure 10).

Note: Disregard the instruction to insert the manufacturer's installation disk in the window. The driver is installed from the powerxpert.inf file downloaded in Section 3, "Connect the Card to the Computer".

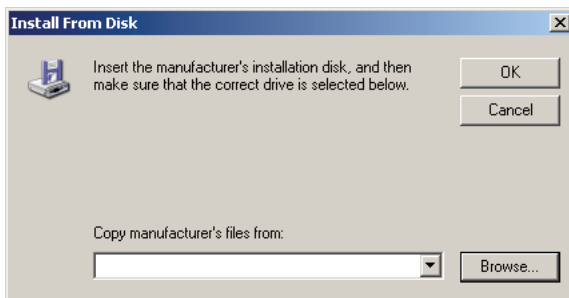


Figure 10. Install From Disk Window

6. Click **Browse**. The Locate File window opens.

7. Locate and select the folder containing the powerxpert.inf file that you downloaded in Step 1 of Section 3, "Connect the Card to the Computer".
8. Select **powerxpert.inf** and click **Open**. The folder containing the powerxpert.inf file displays in the **Copy manufacturer's file from** box (see Figure 11).

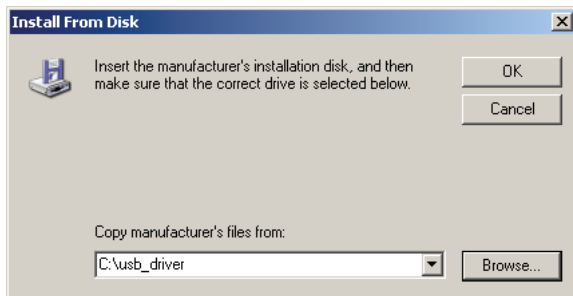


Figure 11. Install From Disk Window

9. Click **OK**. The Network Adapter displays in The Found New Hardware Wizard – Select Network Adapter window (see Figure 12).

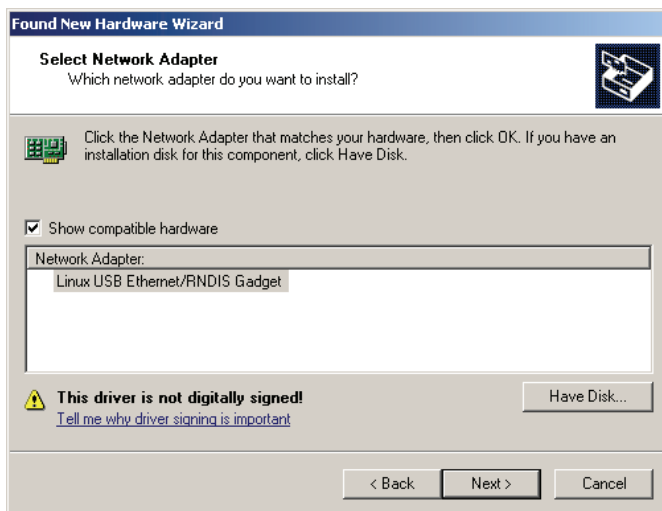


Figure 12. Found New Hardware Wizard – Select Network Adapter Window

10. Select **Linux USB Ethernet/RNDIS Gadget** and click **Next**.
11. If the caution message shown in Figure 13 displays, click **Continue Anyway**.

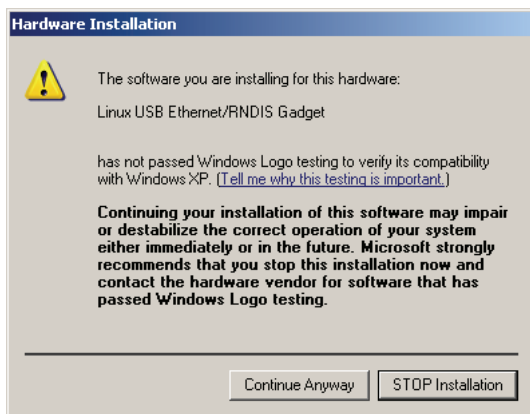


Figure 13. Caution Message

- The wizard installs the software for the USB driver. The Found New Hardware Wizard – Finished Installing the Software window opens (see Figure 14).

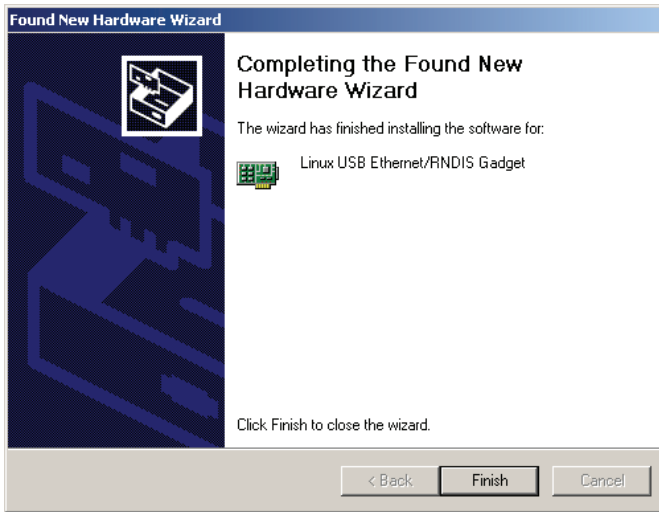


Figure 14. Found New Hardware Wizard – Finished Installing the Software Window

- Click **Finish** to close the wizard.
- Open the Network Connections window to verify that the installation was successful (see Figure 15). If "Linux USB Ethernet/RNDIS Gadget" is listed in the Device Name column, the USB driver has been successfully installed.

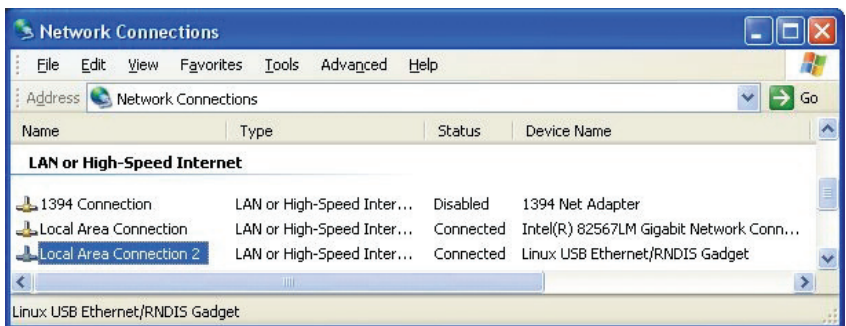


Figure 15. Network Connections Window

15. To verify the IP address assigned through DHCP, continue to Section 6, "Verify IP Address Assignment" on page 22.
16. To manually enter a fixed IP address for the card's network connection, continue to Section 7, "Assign an IP Address" on page 25.

Note: By default, the PXGX PDP Card requests an IP address through DHCP when the card is connected to a network.

Section 5 Install the USB Driver Software (Windows 7)

To install the USB driver software on a computer running Windows 7:

1. Open the Control Panel and select **Hardware and Sound > Devices and Printers** (see Figure 16).

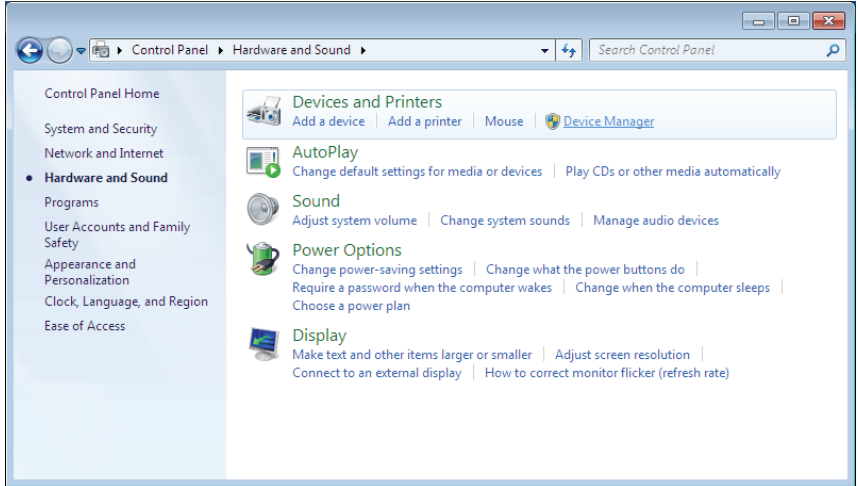


Figure 16. Control Panel Window – Hardware and Sound

2. Select **Device Manager** to open the Device Manager window.

3. Expand **Other devices** and select **RNDIS/Ethernet Gadget** (see Figure 17).
4. Right-click and select **Update Driver Software**.

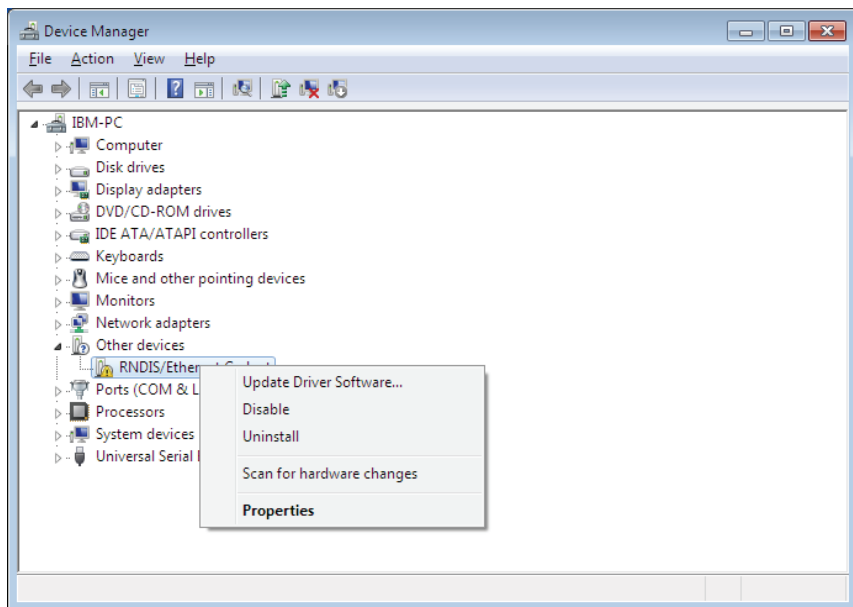


Figure 17. Device Manager Window

5. Select **Browse my computer for driver software** (see Figure 18).

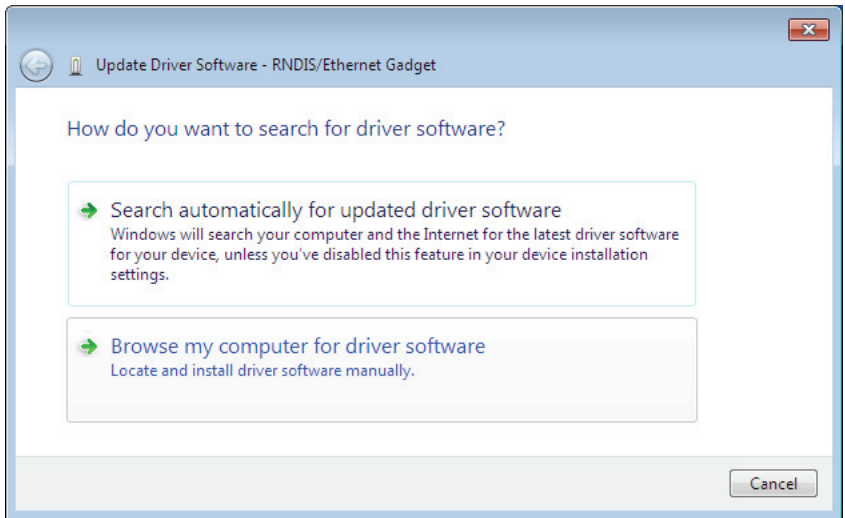


Figure 18. Update Driver Software Window – Search Method

6. Click **Browse**. The Locate File window opens.
7. Locate and select the folder containing the powerxpert.inf file that you downloaded in Step 1 of Section 3, "Connect the Card to the Computer".
8. Click **Open**. The folder displays in the **Search for driver software in this location** box (see Figure 19).

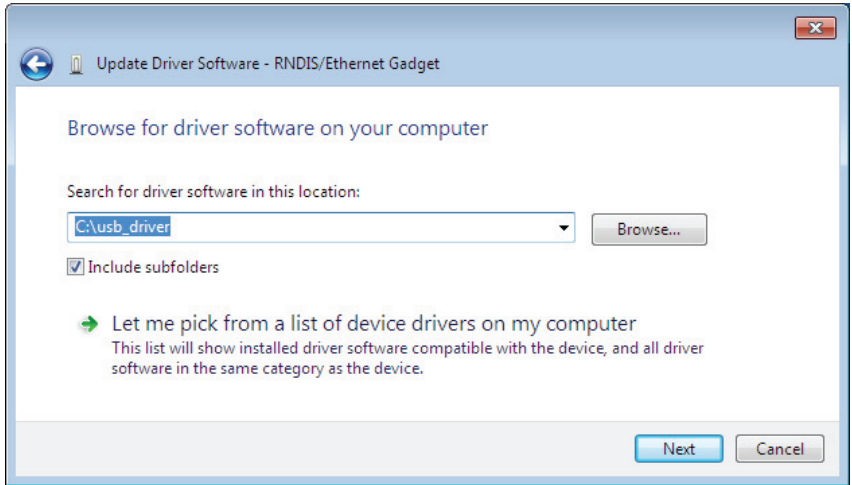


Figure 19. Update Driver Software Window – Browse for Driver Software

9. Click **Next**.

10. If the message “Windows can't verify the publisher of this driver software” displays, select **Install this driver software anyway** (see Figure 20).

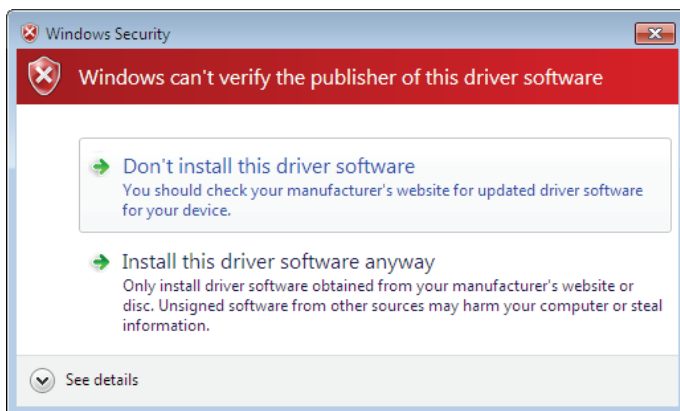


Figure 20. Windows Security Message

The message “Windows has successfully updated your driver software” displays (see Figure 21).

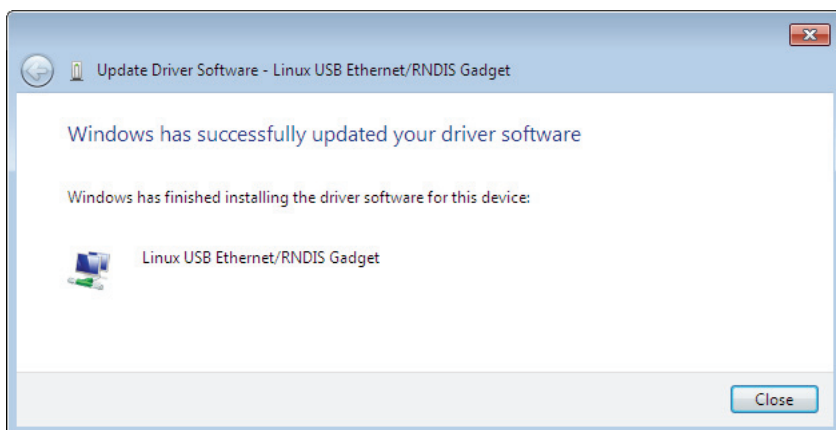


Figure 21. Update Driver Software Window – Update Successful

11. To verify the device is installed:
 - a. Go to **Control Panel > Hardware and Sound > Devices and Printers > Device Manager**.
 - b. Expand **Network adapters**.
 - c. Verify that **Linux USB Ethernet/RNDIS Gadget** is listed under Network adapters (see Figure 22)

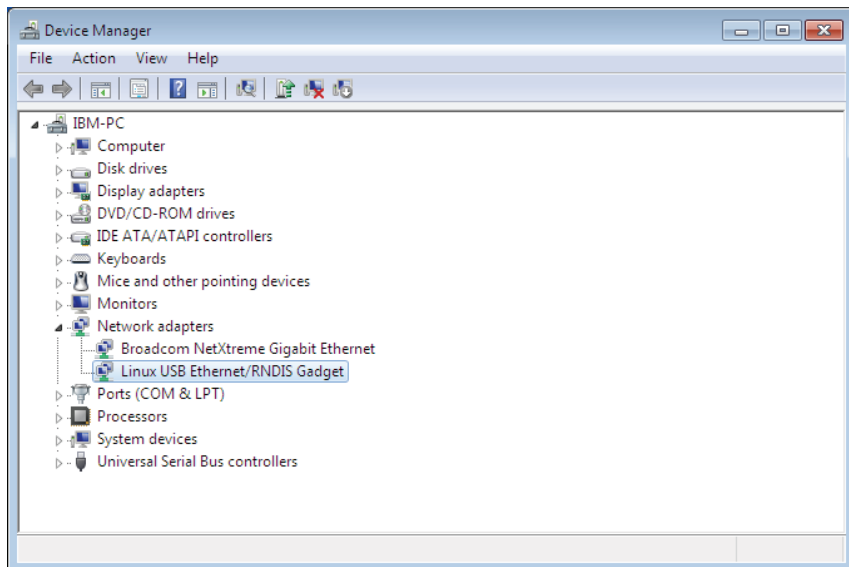


Figure 22. Device Manager Window – Verify Device Installation

- From the **Start** menu, go to **All Programs > Accessories > Command Prompt** to open a Command Prompt window.
- Enter **ipconfig /all**.

The adapter IP addressing information displays. Verify that the assigned IPv4 address is in the 192.168.200.x range (where “x” is typically “1”). See Figure 23.

The USB driver software installation is complete.

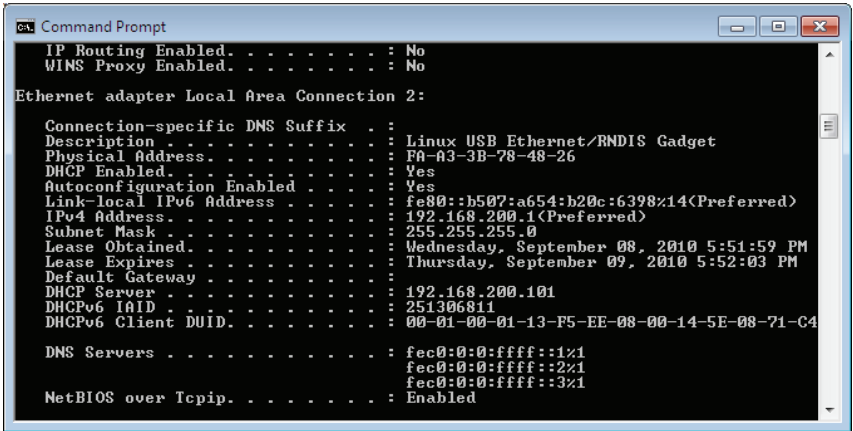


Figure 23. Command Prompt Window – Adapter IP Address Information

Section 6 Verify IP Address Assignment

To verify the IP address assignment:

1. Connect to the card over the USB cable:
 - a. Open your Web browser.
 - b. Enter: **http://192.168.200.101**
You are prompted to log on.
2. Log on as administrator. The user name and default password is "admin." The PXGX PDP Card Web page displays.
3. Select **Network** from the Configuration menu. The Network page displays (see Figure 24).

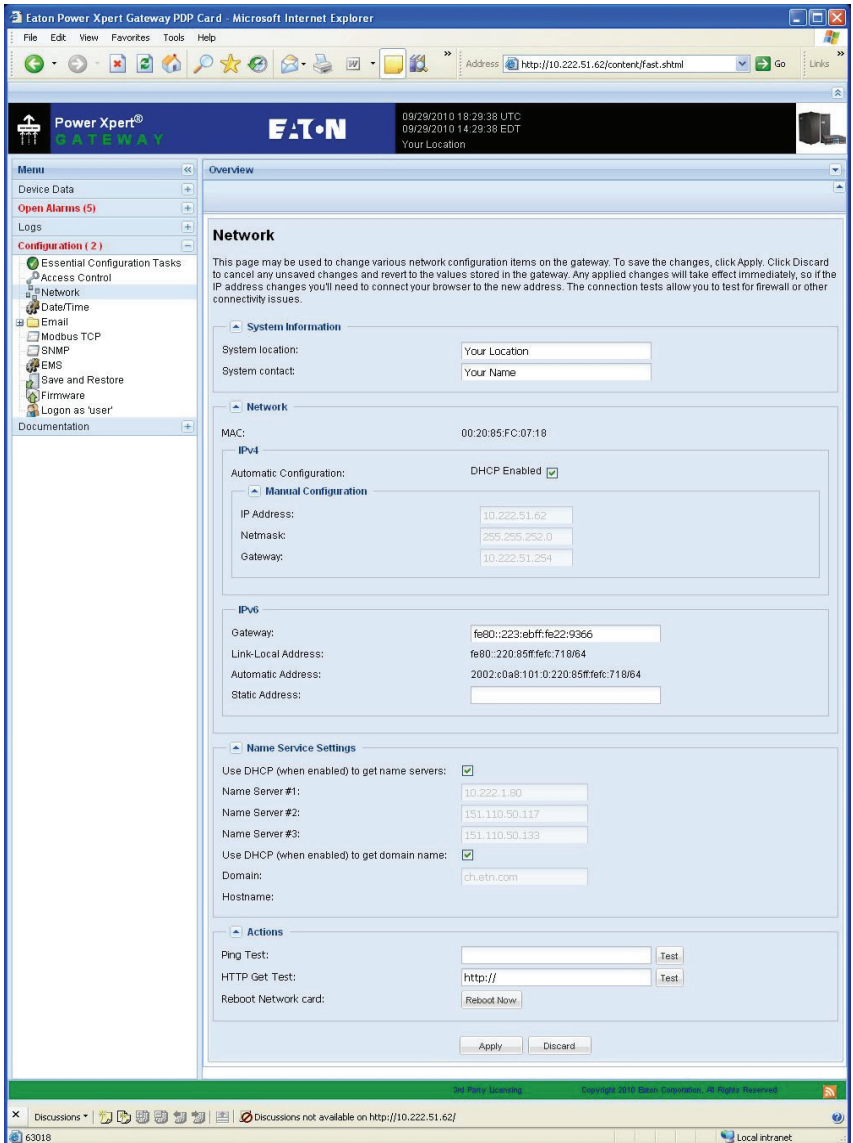


Figure 24. PXGX PDP Card Network Page

4. Verify that the network settings match those on the Installation Checklist. If you are manually configuring the network settings, go to Section 7, "Assign an IP Address" on page 25.
5. Verify network communication:
 - a. Clear the **DHCP Enabled** check box. The text that was dimmed in the Manual Configuration section is now available.
 - b. Copy the IP address.
 - c. Open a second browser and paste the IP address in the Address bar and click **Go**. If the assigned IP address is working, you will be prompted to log on.
 - d. Log on as administrator. The user name and default password is "admin." The PXGX PDP Card Web page displays.

Note: For detailed information, refer to the user's guide for the PXGX PDP Card, which is available on the Documentation menu or from www.eaton.com/powerxpert.

Section 7 Assign an IP Address

To manually enter a fixed IP address for the card:

1. Open your Web browser and enter: **http://192.168.200.101/**. You are prompted to log on.
2. Log on as administrator. The user name and default password is "admin." The PXGX PDP Card Web page displays.
3. Select **Network** from the Configuration menu. The Network page displays (see Figure 24 on Page 23).
4. Clear the **DHCP Enabled** check box to enable manual configuration.
5. Enter the IP, Netmask, and Gateway addresses in the Manual Configuration section and click **Apply**.
6. Click **OK** to confirm.
7. If you will be using a host name, or host names, for controlling access to the card, type the server IP address in the Name Server box. Up to three IP addresses can be entered.
8. Click **Apply**.
9. Click **OK** to confirm.
10. Verify network communication:
 - a. Copy the IP address you entered in Step 5.
 - b. Open a second browser and paste the IP address in the Address bar and click **Go**. You are prompted to log on.
 - c. Log on as administrator. The user name and password is "admin." If the PXGX PDP Card Web page displays, the fixed IP Address is correct.

Note: For detailed information, refer to the user's guide for the PXGX PDP Card, which is available on the Documentation menu or from **www.eaton.com/powerxpert**.



164950239 1