

How to use Eaton's Microsoft Systems Center Operations Manager (SCOM) SNMP Management Pack

The following article describes how to use the Eaton SCOM Management Pack (MP) 1.0

How to use the SCOM MP SNMP

Step-by-step guide

Pre-requisites

- SCOM server running
- UPS with SNMP configuration

Connect to SCOM

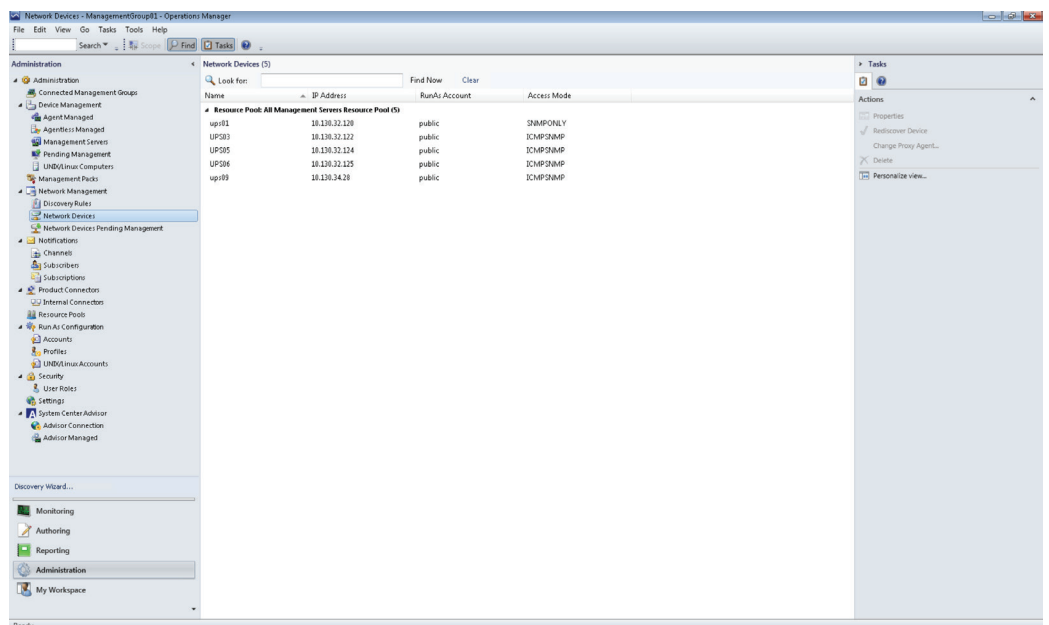
- Use the Operation Manager Console thick client
- Use the Operations Manager Web Console

Install the Management Packs (MPs)

- Go to "Administration" => Management Packs
- On the right panel click on "Import Management Packs"
- Click on "Add"
- Add the MP in the following order
 - Eaton.UPS.Discovery.mp
 - Eaton.UPS.Monitoring.mp
 - Eaton.UPS.Dashboards.mp

Configure SNMP discovery

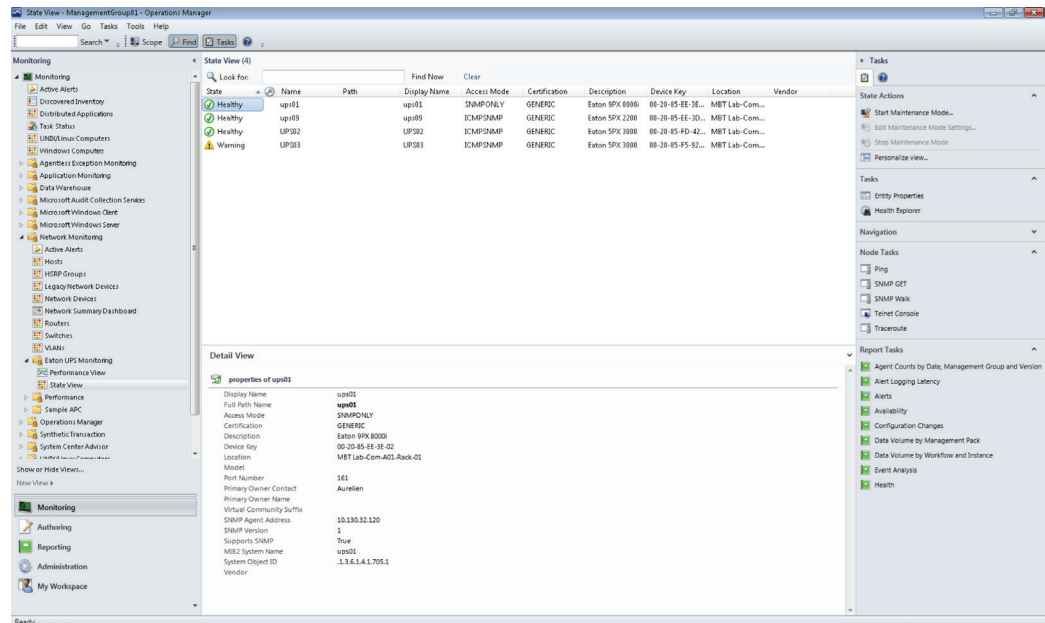
- Go to "Administration" => Discovery Rules
- Action=> Discover network Devices
- Configure for your needs
- Run the discovery
- Once the network discovery has finished, you will see the new network devices



Network Devices View – Eaton UPSs

Show UPS state and performance

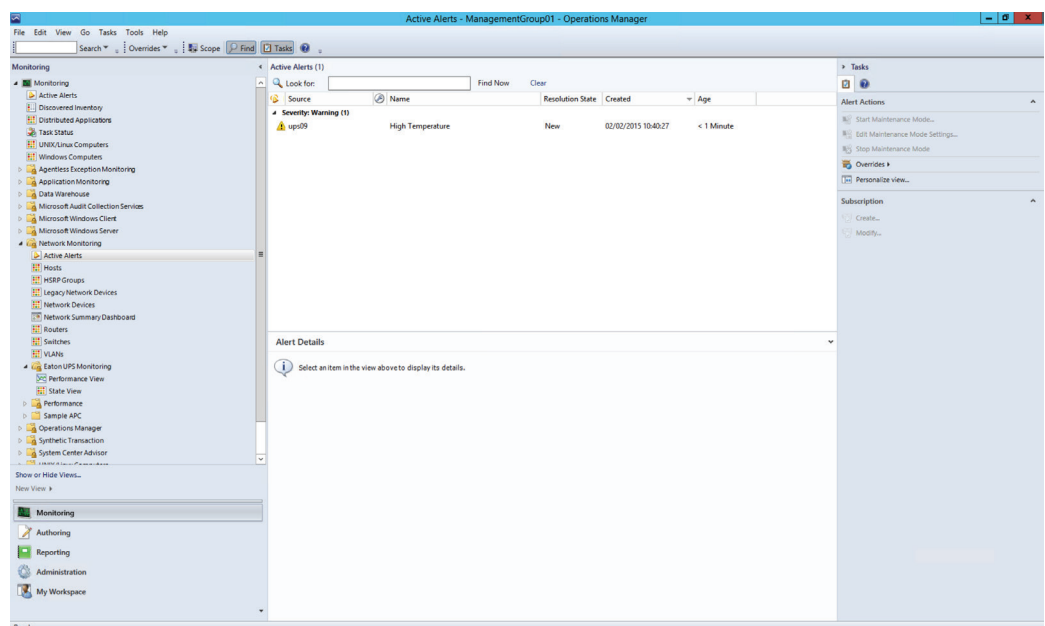
State View



The state view shows the current state of the devices. It will be one of the following:

- Healthy
- Warning
- Critical

UPS High Temperature



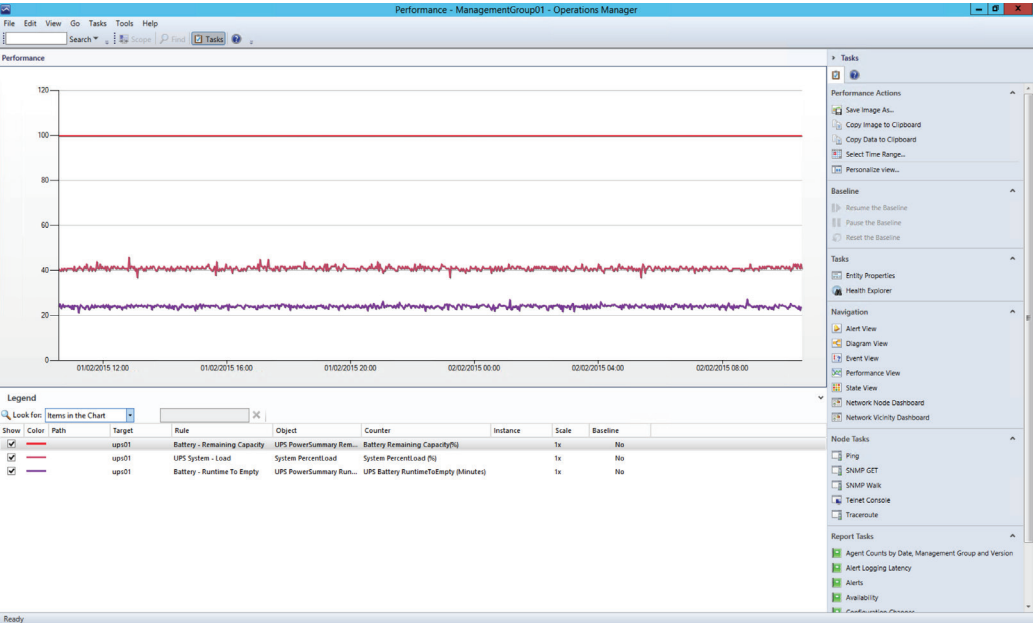
When a UPS is in an error or sub-optimal state, there will be an alert that can be shown in the "Active Alerts" view.

Show UPS state and performance

Performance View

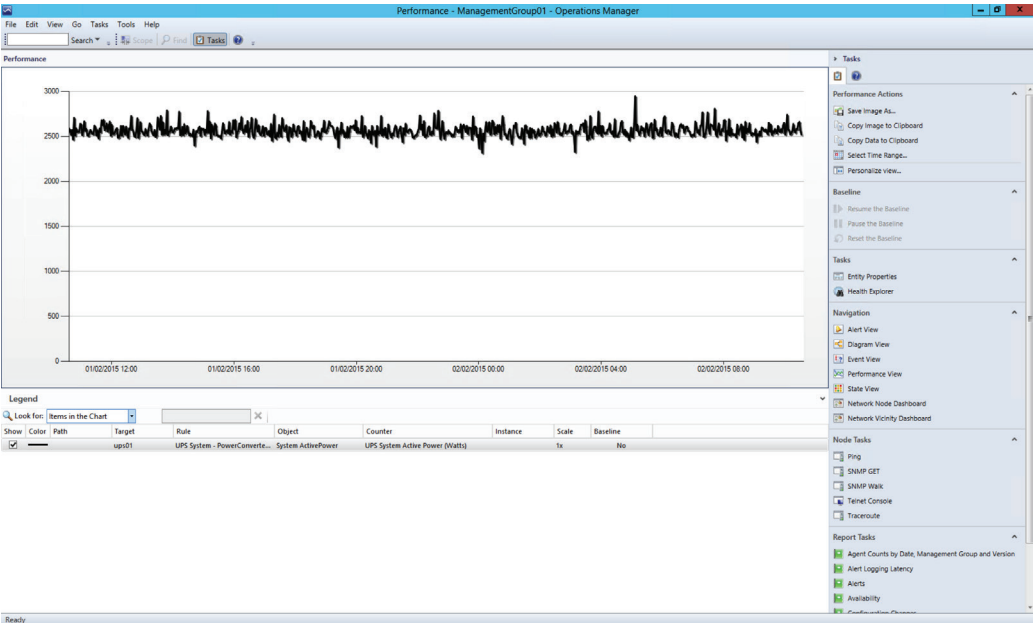
The performance view shows all the data that is stored in the SCOM database

UPS Battery and Load



Performance View – Eaton UPS Battery & Load

UPS Output Watts



Performance View – Eaton UPS Output in Watts