

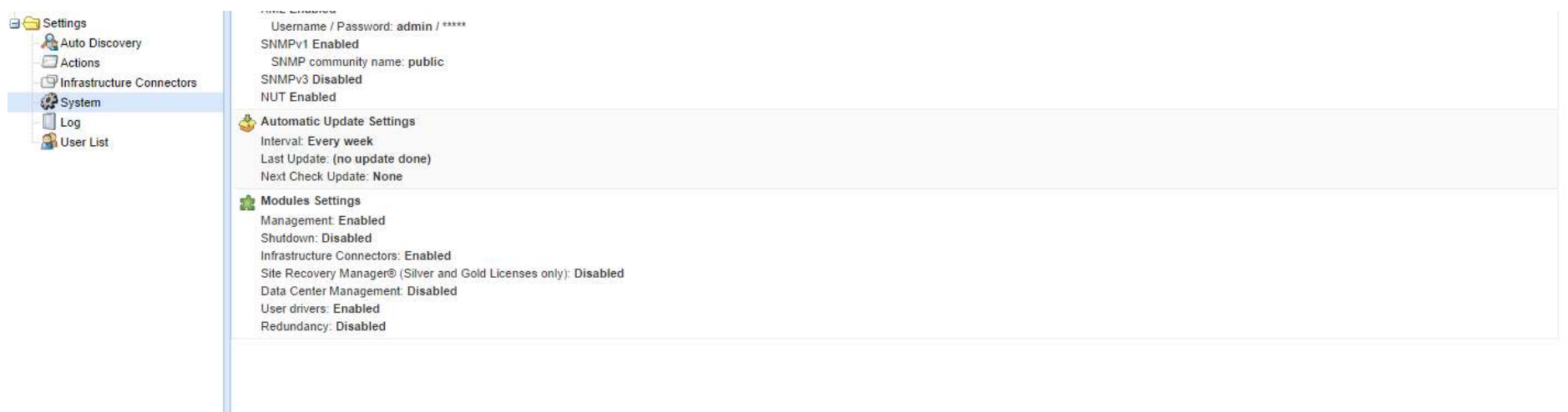
IPM now integrates a new infrastructure connector for OpenStack users. This connector brings the following new features:

- Supervise following OpenStack components:
  - Physical hosts,
  - Virtual machines (on specific host),
  - Storage hosts,
  - Storage Volumes;
- Trig following actions on Power or Environmental events:
  - Virtual Machines Management through Nova (move, shutdown and start)
  - Storage volumes Migration through Cinder.

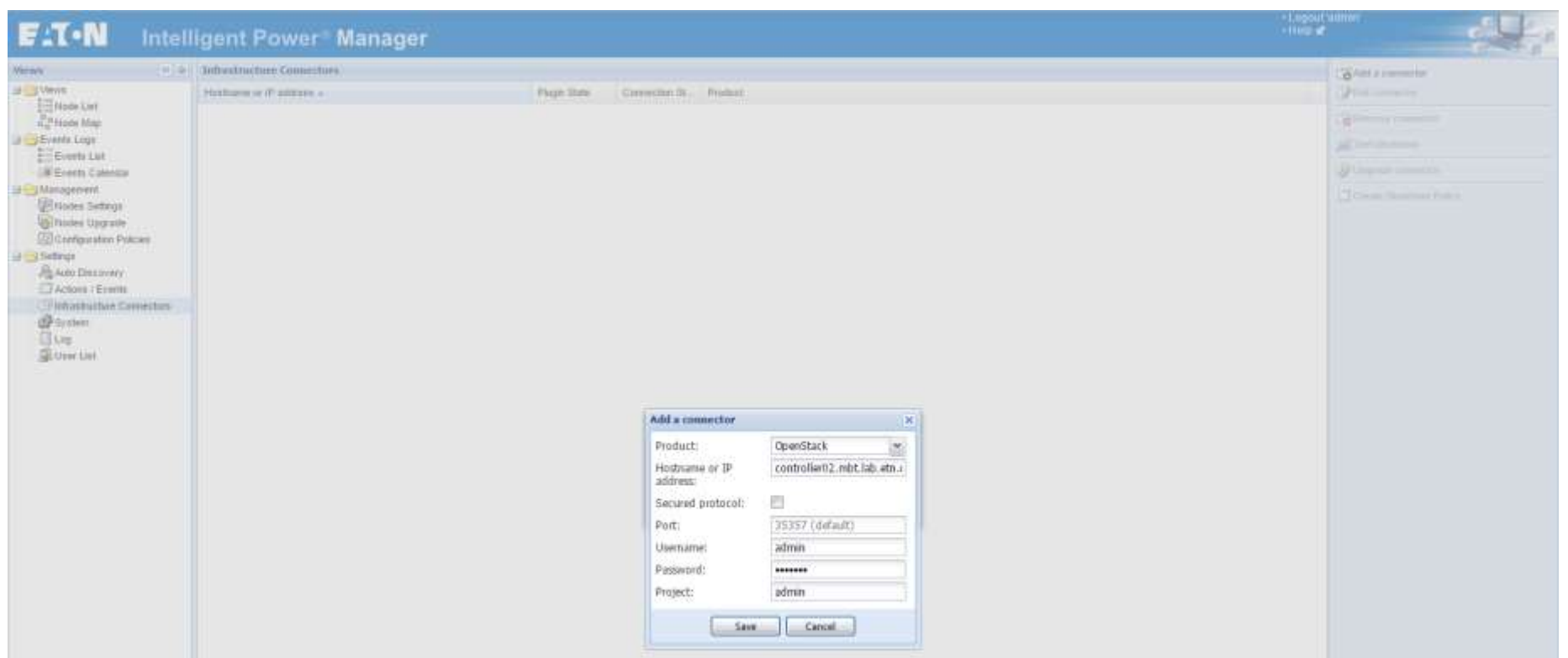
This new infrastructure connector is available only to users having a GOLD license.

## Create an OpenStack Connector

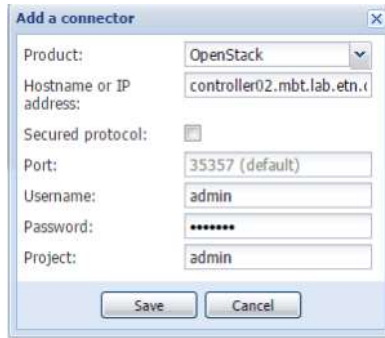
1. Go to "System" panel.



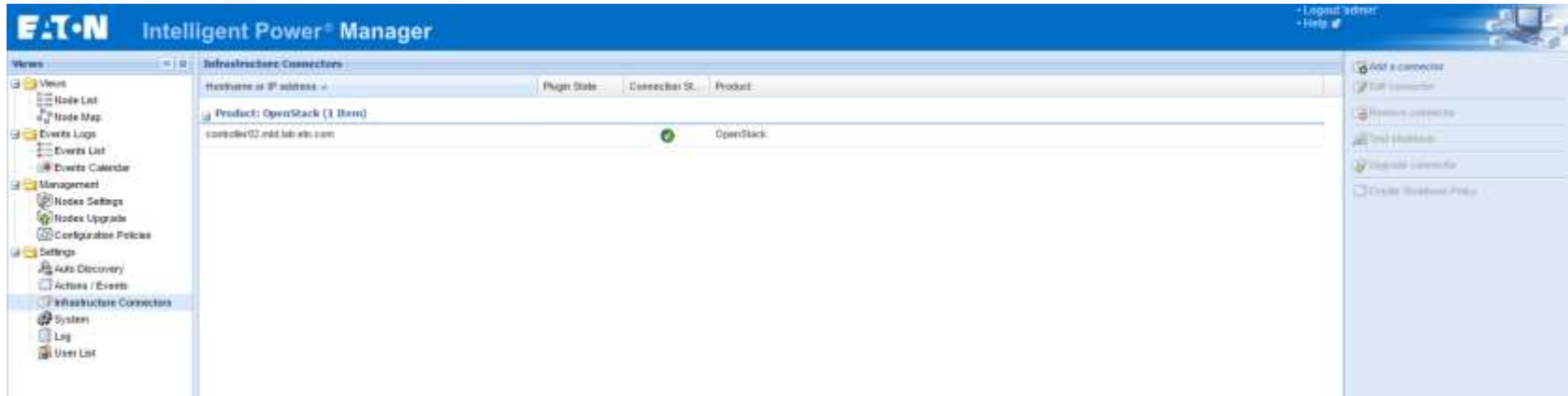
2. Enable the "Infrastructure Connectors" module.
3. Go to the "Infrastructure Connectors" panel.
4. Add a connector and select "OpenStack" as product type.



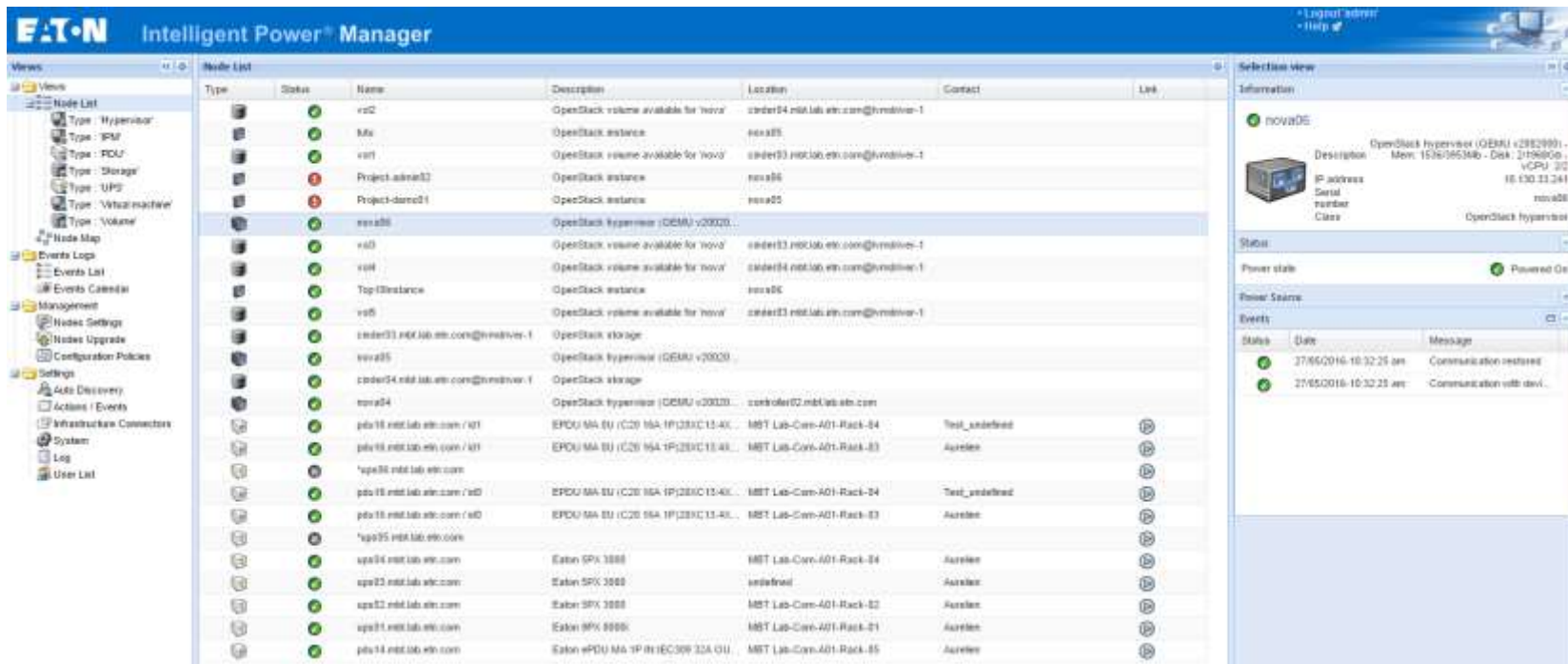
5. Click on save.



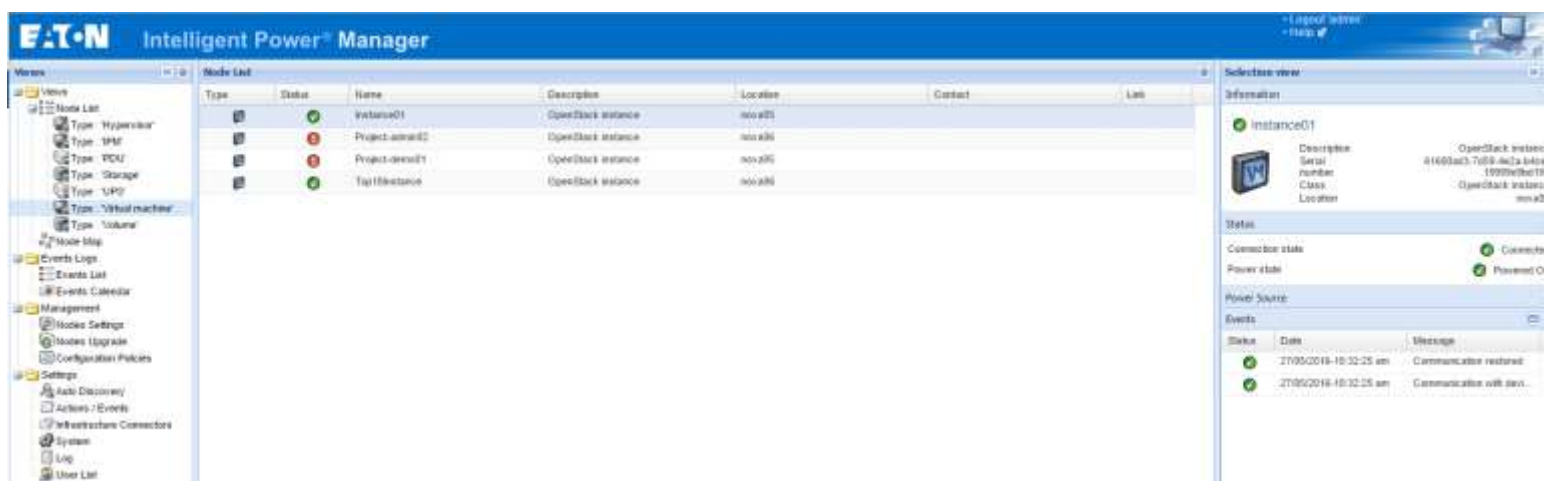
6. After the initialization delay, you should see the green icon telling that the communication is established.



7. You can go now check the Node List and see the new nodes that are appearing.



8. You can also create a filter and focus on some specific nodes.



## How-to use the OpenStack feature

Along with the OpenStack connector, some actions are now available to manage the IT load behind.

To use and configure those actions, you need to follow the step by step procedure below.

1. Set up a configuration policy to define the scope of the future actions.
2. Define the events on which your actions will be launched.
3. Create the action regarding your needs:
  - a. To shutdown OpenStack instances when the runtime threshold is reached:

The screenshot shows the 'Create new action' dialog box with the following configuration:

- Action active:
- Action name\*: OpenStack VM Action
- Events List\*: 1 Events Logs: Runtime Threshold Reached
- Event Source: Any source
- Action type\*: VM power action (stop/start)
- Action Settings:
 

Name	Value
Power comma...	Guest shutdown
The VM target*	-- VM event source --
Shutdown que...	0

- b. To migrate OpenStack instances when the power is lost:

The screenshot shows the 'Create new action' dialog box with the following configuration:

- Action active:
- Action name\*: OpenStack VM Migrate Action
- Events List\*: 1 Events Logs: Power Failure
- Event Source: Any source
- Action type\*: VM migrate action
- Action Settings:
 

Name	Value
VM to migrate*	-- VM event source --
Target host*	nova06

4. Similarly, following actions are also available:
  - a. To start OpenStack instances;
  - b. To migrate OpenStack volumes;
  - c. To shutdown OpenStack Host (only the systems supported by OpenStack).