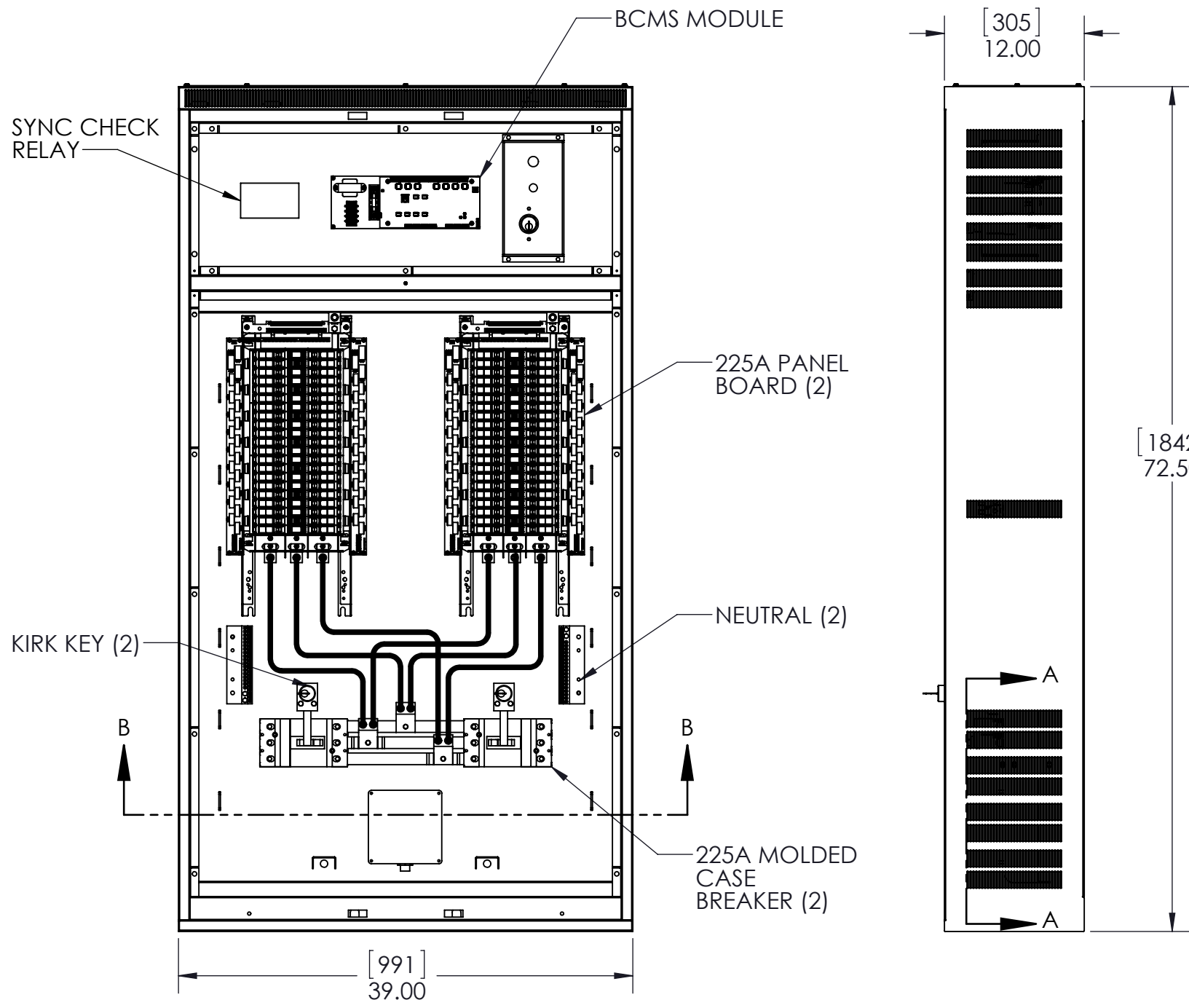
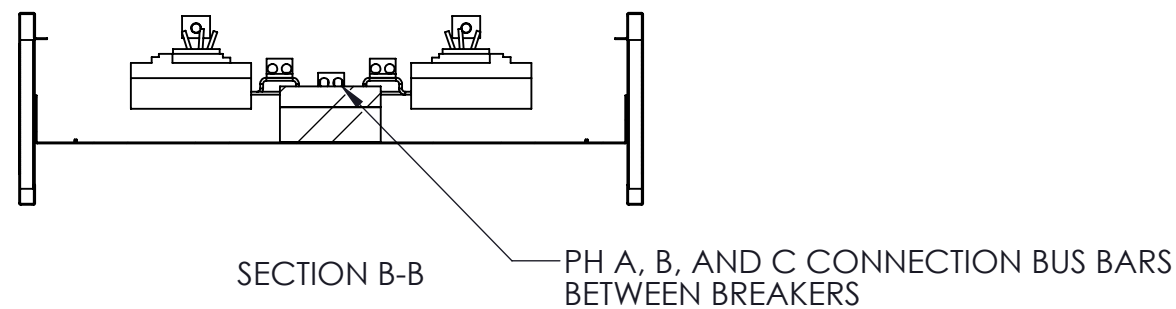
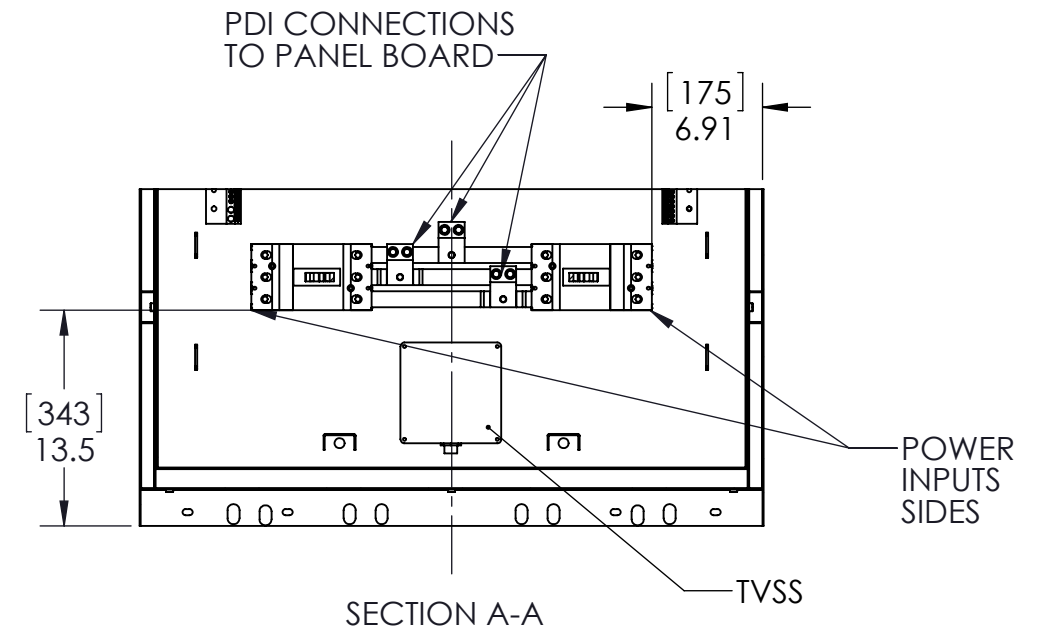


DOORS AND PANELS ARE HIDDEN IN THIS DRAWING



GENERAL NOTES:

1. ENCLOSURE: NEMA 1 RATED
2. ALL DOOR HAVE LOCKABLE HANDLE WITH COMMON KEY
3. ALL BUS IS SILVER-PLATED COPPER, BASED ON 1000A/ SQ IN.
4. WEIGHT : 5000 LBS.. ESTIMATED
OPERATING AMBIENT TEMPERATURE 0C TO 40C (32 F TO 104F)
HEAT DISSIPATION AT FULL RATE: 30,709 BTU/Hr
5. FINISH:
EXTERIOR PANELS: PEARL WHITE - PHTI-60016
FRAME: CARBIDE BLACK - EBT2C0000
6. RECOMMENDED MINIMUM CLEARANCE :
FRONT: 36 "
SIDE : 6"
7. CABLE ENTRANCE THOUGH BOTTOM AS SHOWN PUNCH COVER PANELS AS REQUIRED FOR CONDUITS ENTRY/EXIT



UNLESS OTHERWISE SPECIFIED: DIMENSIONS ARE IN INCHES TOLERANCES: ANGULAR: ±0.5° BEND ±1° TWO PLACE DECIMAL ±0.02 THREE PLACE DECIMAL ±0.005 [] IN MM		THIS DRAWING CONTAINS CONFIDENTIAL & PROPRIETARY INFORMATION AND SHALL NOT BE DISCLOSED OR COPIED WITHOUT THE EXPRESSED, WRITTEN PERMISSION OF POWER DISTRIBUTION, INC.		PDI	
USED ON	DO NOT SCALE DRAWING	TITLE: OUT LINE			
APPROVALS		DATE		WALL MOUNT, 225A REDUNDANCY BREAKER W KIRK KEY	
DRAWN ISF		04-22-15		(2) 225A PANEL BOARDS WITH BCMS	
MATERIAL:	CHECKED	SIZE	DWG. NO.	REV	
FINISH: SEE NOTES	ENG. APPR.	B	RPP18286	A	
WEIGHT:		SCALE: 1:16		PART NO.	SHEET 1 OF 1