

GENERAL NOTES:

1. NEMA 1 RATED CABINET
2. ALL DOOR HAVE LOCKABLE HANDLE WITH COMMON KEY
3. ALL BUS IS SILVER-PLATED COPPER, BASED ON 1000A/ SQ IN.
4. WEIGHT : 1500 LBS.... ESTIMATED
5. OPERATING AMBIENT TEMPERATURE 0C TO 40C (32 F TO 104F)
6. HEAT DISSIPATION AT FULL RATE: 9000 BTU/Hr.
7. FINISH: PDI STANDARD: PEARL WHITE
8. RECOMMENDED MINIMUM CLEARANCE :FRONT: 36 " , REAR : 36" FOR SERVICE ,SIDE : 6" TOP: 12"

EXTERNAL CONNECTION NOTES:

9. SOURCE AND LOAD RATING: 600V, 800 AMPS, 3 PHASE, 3 WIRE
10. GROUND BUS : 200 AMPS
11. CABLE ENTRANCE THOUGH BOTTOM OR TOP AS SHOWN PUNCH COVER PANELS AS REQUIRE FOR CONDUITS
12. LUG MATERIAL RECOMMENDED: ALUMINUM ALLOY 6061 . UL LISTED
13. LUG SCREW TIGHTENING TORQUE PER UL 486B
14. REFER SOURCE AC INPUT CONNECT TO SOURCE 1 INPUT BUS BAR
15. ALTERNATE SOURCE AC INPUT CONNECT TO SOURCE 2 INPUT BUS BAR
16. SEE PAGE 2 FOR INPUT AND OUTPUT BUS LOCATION
17. SEE TABLE 1 FOR RECOMMENDED CABLE SIZE AND LUG

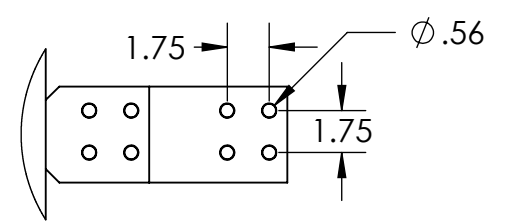
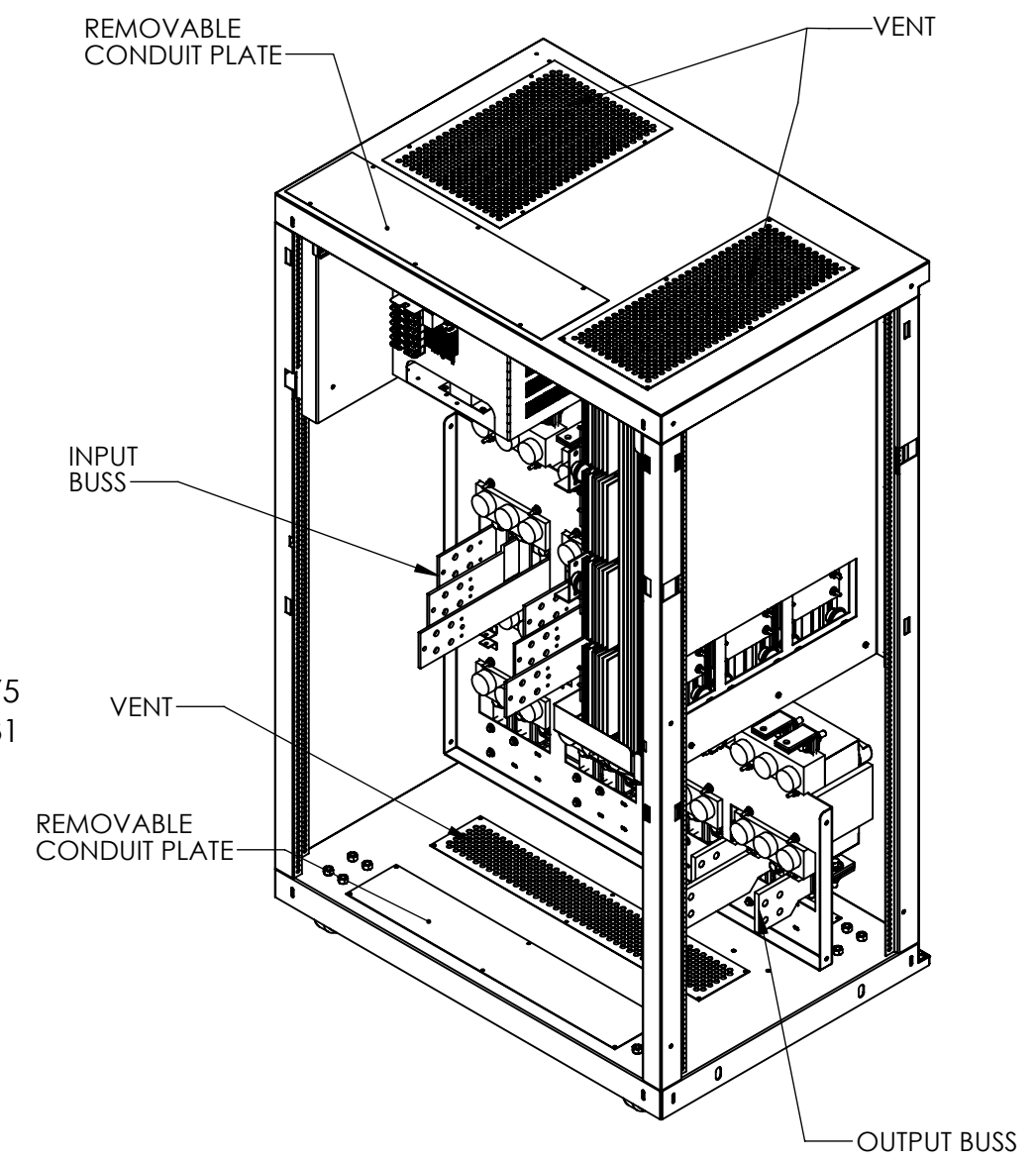
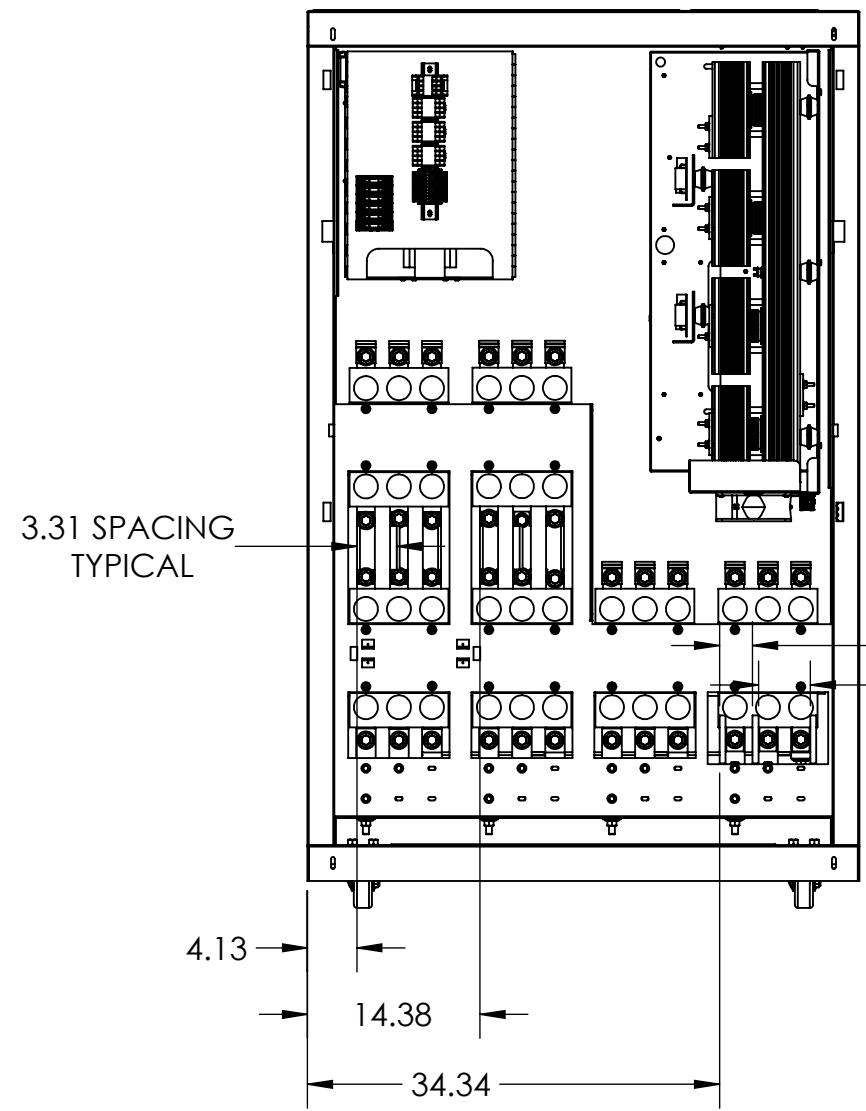
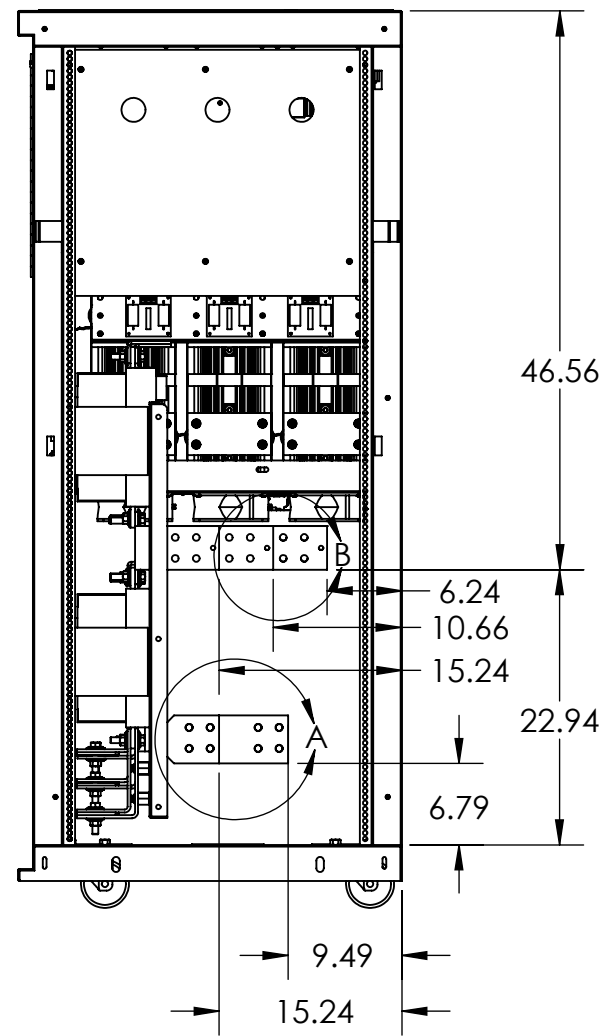
UNLESS OTHERWISE SPECIFIED:
 DIMENSIONS ARE IN INCHES
 [] IN MILLIMETER
 ANGULAR: ±0.5° BEND ±1°
 TWO PLACE DECIMAL ±0.02
 THREE PLACE DECIMAL ±0.005

THIS DRAWING CONTAINS
 CONFIDENTIAL & PROPRIETARY
 INFORMATION AND SHALL NOT
 BE DISCLOSED OR COPIED
 WITHOUT THE EXPRESSED,
 WRITTEN PERMISSION OF
 SMITHS POWER

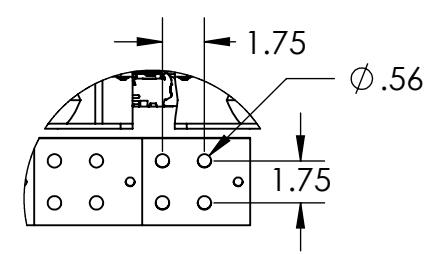


THIRD ANGLE PROJECTION		DO NOT SCALE DRAWING	
APPROVALS		DATE	
DRAWN	LJN	07-07-13	
CHECKED			
ENG. APPR.			

TITLE: -OUTLINE- 800 AMP STATIC TRANSFER SWITCH		
SIZE B	DWG. NO. DWG40004	REV B
PART NO.		SHEET 1 OF 2



DETAIL A
OUTPUT BUS BAR



DETAIL B
INPUT BUS BAR

TABLE 1			
INPUT/OUTPUT	CABLE SIZE	LUG	TIGHTENING TORQUE
400 A	(2) 250 KCMIL	NEMA 2 HOLES COMPRESSION	300 LB-IN
800A	(2) 500 KCMIL	NEMA 2 HOLES COMPRESSION	300 LB-IN
SIGNAL / CONTROL	# 18 AWG	NONE REQUIRED	18 LB-IN

SIZE	DWG. NO.	REV
B	DWG40004	B
PART NO. 800AMP		SHEET 2 OF 2