


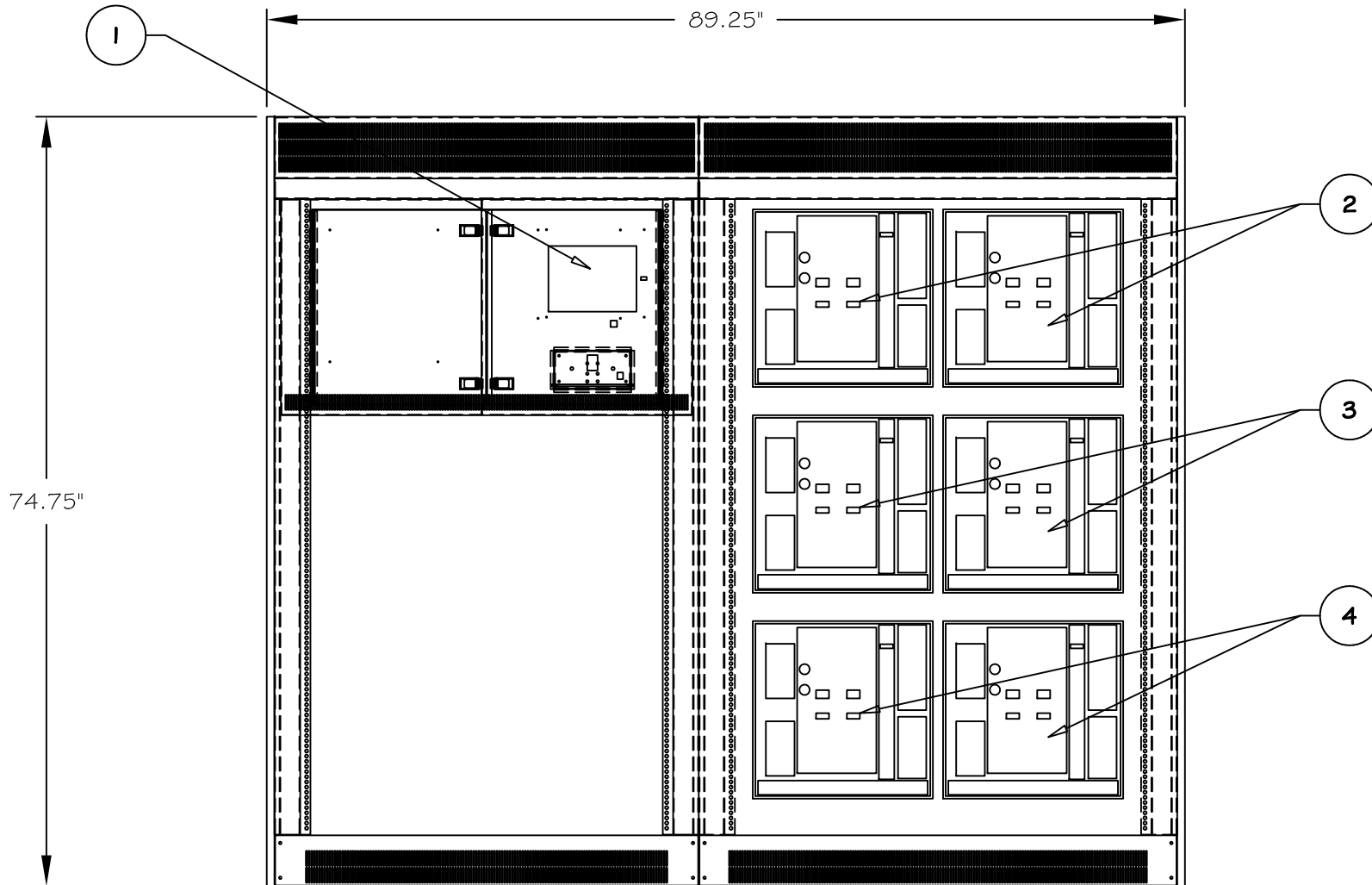
FRONT VIEW

NOTES:

1. OPERATOR INTERFACE PANEL.
2. ALLOW A MINIMUM OF 6" CLEARANCE BETWEEN WALL AND SIDES.
3. ALLOW A MINIMUM OF 46" FOR FRONT DOOR SWING.

THIS DRAWING CONTAINS  
CONFIDENTIAL & PROPRIETARY  
INFORMATION AND SHALL NOT  
BE DISCLOSED OR COPIED  
WITHOUT THE EXPRESSED,  
WRITTEN PERMISSION OF  
POWER DISTRIBUTION INC.


TITLE		-OUTLINE-	
		STATIC TRANSFER SWITCH 1600 AMP STAND ALONE UNIT	
DWG. NUMBER		1 OF 4	
		DWG40019	
DRAWN BY	K. Harlow	REVISION	
DATE	03-30-07		-B-
		 creating the perfect wave	

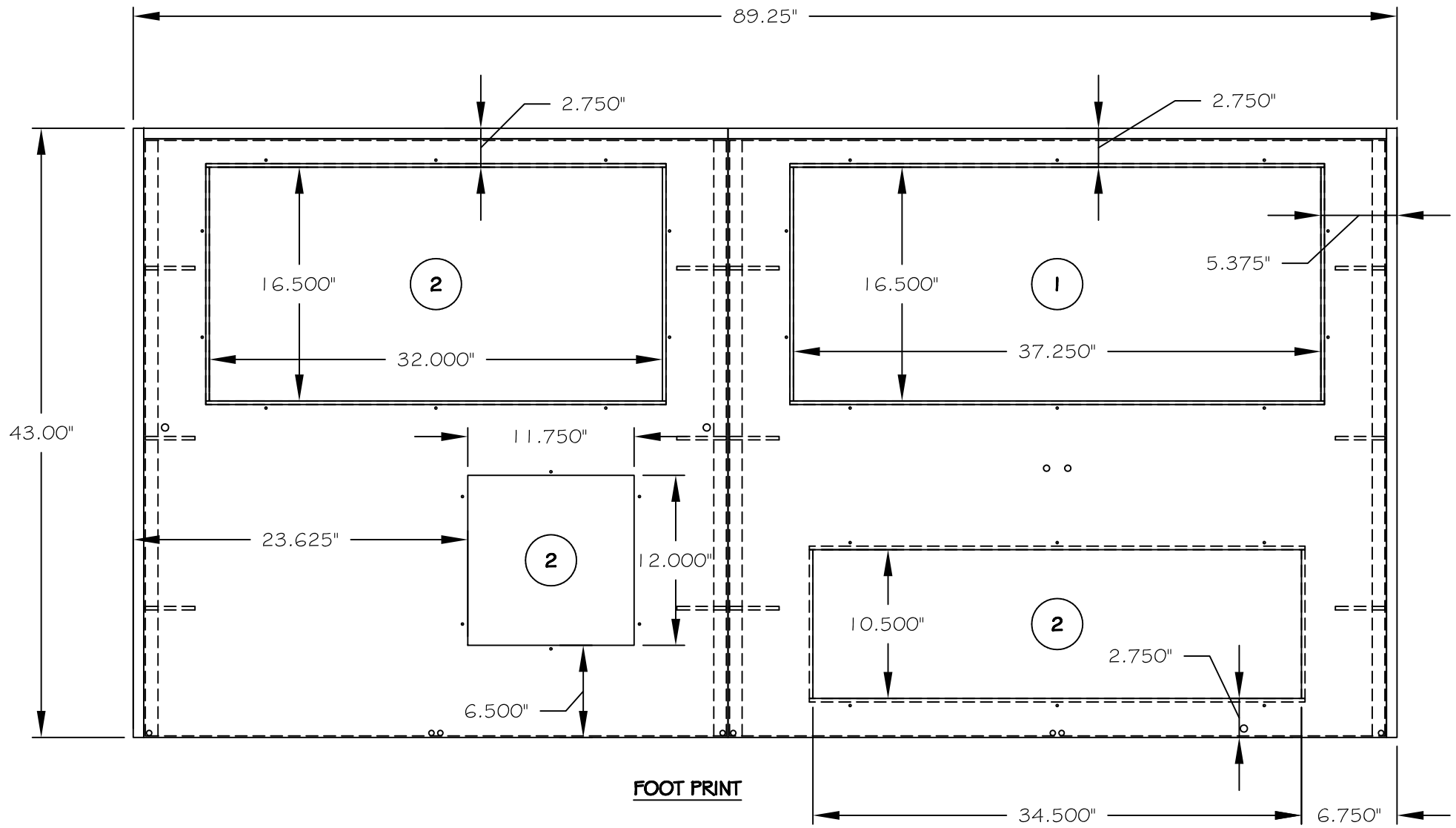


**FRONT VIEW**  
**(DOORS & COVERS REMOVED)**

**NOTES:**

1. OPERATOR INTERFACE PANEL.
2. MOLDED CASE INPUT SWITCH.
3. MOLDED CASE BYPASS SWITCH.
4. MOLDED CASE ISOLATION SWITCH (2nd SWITCH OPTIONAL).
5. ALLOW A MINIMUM OF 6" CLEARANCE BETWEEN WALL AND SIDES.
6. ALLOW A MINIMUM OF 46" FOR FRONT DOOR SWING.

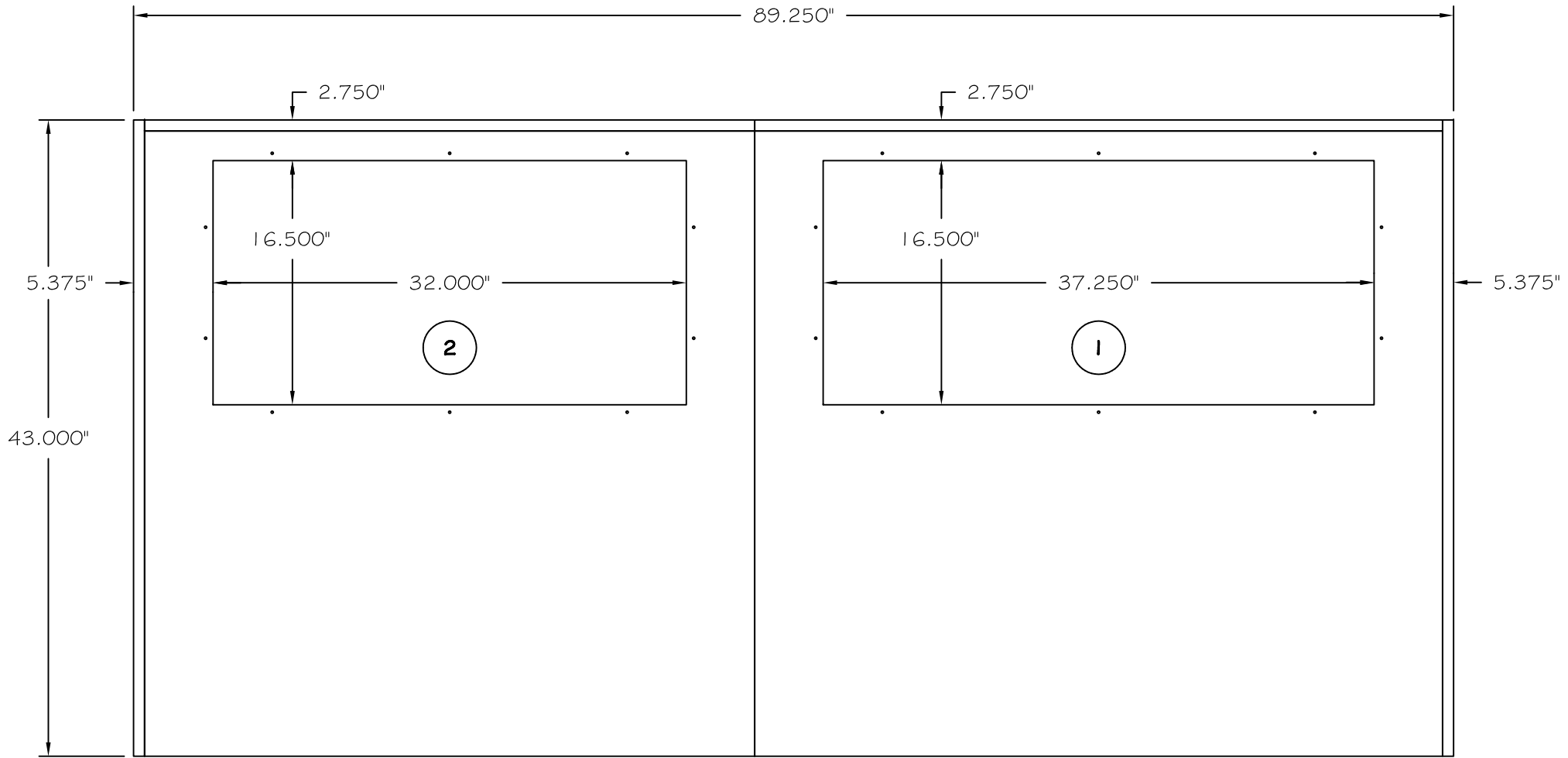
THIS DRAWING CONTAINS CONFIDENTIAL & PROPRIETARY INFORMATION AND SHALL NOT BE DISCLOSED OR COPIED WITHOUT THE EXPRESSED, WRITTEN PERMISSION OF POWER DISTRIBUTION INC.		TITLE —OUTLINE— STATIC TRANSFER SWITCH 1600 AMP STAND ALONE UNIT	
		DWG. NUMBER 2 OF 4 DWG40019	
		DRAWN BY K. Harlow	REVISION
		DATE 03-30-07	—B—
			



**FOOT PRINT**

- NOTES:**
1. CABLE INPUT AREA, SOLID REMOVABLE PANEL TO BE PUNCHED.
  2. VENTS FOR COOLING.
  3. ALLOW A MINIMUM OF 6" CLEARANCE BETWEEN WALL AND SIDES.
  4. ALLOW A MINIMUM OF 46" FOR FRONT DOOR SWING.

THIS DRAWING CONTAINS CONFIDENTIAL & PROPRIETARY INFORMATION AND SHALL NOT BE DISCLOSED OR COPIED WITHOUT THE EXPRESSED, WRITTEN PERMISSION OF POWER DISTRIBUTION INC.		-OUTLINE- STATIC TRANSFER SWITCH 1600 AMP STAND ALONE UNIT		
		DWG. NUMBER 3 OF 4 DWG40019		
		DRAWN BY K. Harlow	REVISION	
		DATE 03-30-07	-B-	




TOP VIEW

**NOTES:**

1. CABLE INPUT AREA, SOLID REMOVABLE PANEL TO BE PUNCHED.
2. VENTS FOR COOLING.
3. ALLOW A MINIMUM OF 6" CLEARANCE BETWEEN WALL AND SIDES.
4. ALLOW A MINIMUM OF 46" FOR FRONT DOOR SWING.

THIS DRAWING CONTAINS  
CONFIDENTIAL & PROPRIETARY  
INFORMATION AND SHALL NOT  
BE DISCLOSED OR COPIED  
WITHOUT THE EXPRESSED,  
WRITTEN PERMISSION OF  
POWER DISTRIBUTION INC.

TITLE		-OUTLINE-	
		STATIC TRANSFER SWITCH 1600 AMP STAND ALONE UNIT	
DWG. NUMBER		4 OF 4	
		DWG40019	
DRAWN BY	K. Harlow	REVISION	
DATE	03-30-07		-B-
		 <b>PDI</b> creating the perfect wave	