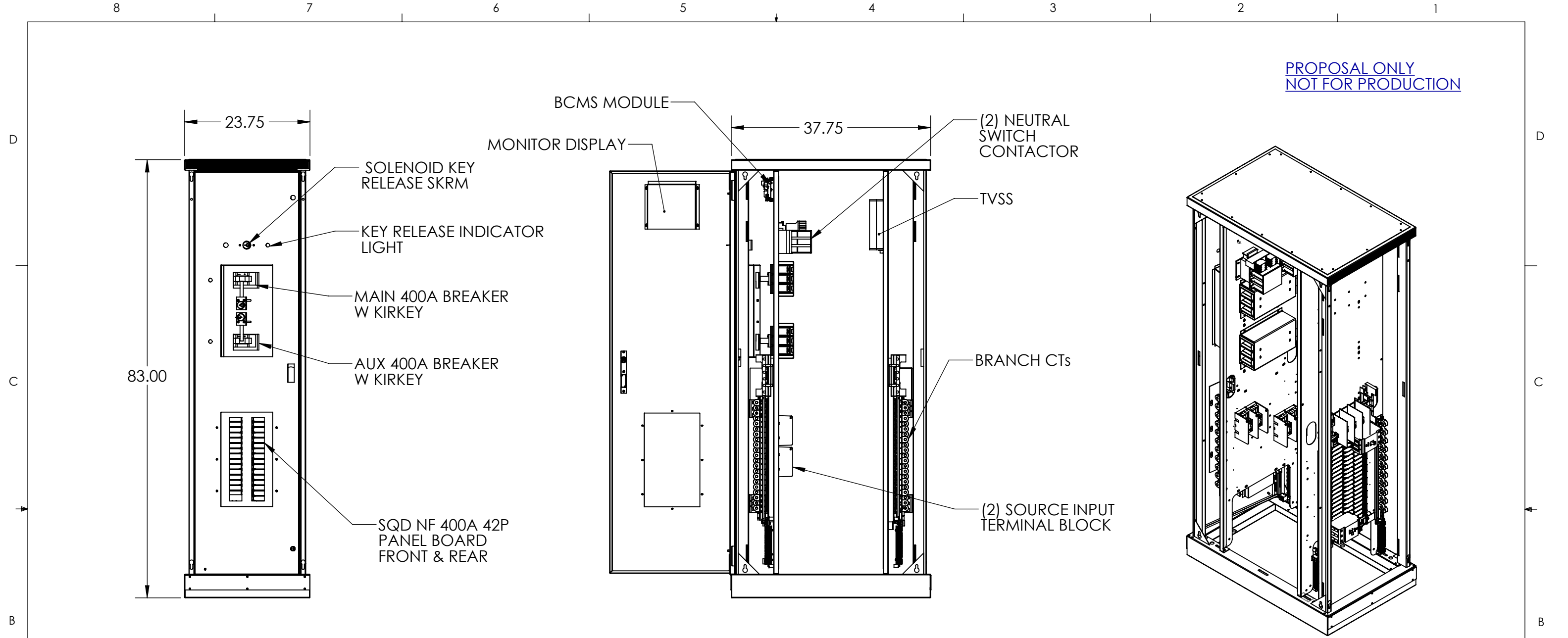


PROPOSAL ONLY  
NOT FOR PRODUCTION



DOORS AND PANELS REMOVED

GENERAL SPECIFIED

CABINET CHARACTERISTIC:  
ENCLOSURE : NEMA 1  
LOCATION : INDOOR  
MATERIAL: STEEL  
FINISH: EXTERIOR PANELS: PEARL WHITE - PHTI-60016  
WEIGHT : 375 LBS. APPROX.

ELECTRICAL:  
INPUT #1: 400/230 VAC 3PH-4W W/GND @ 60 HZ, 400A (MAX) (2 EA. # 2/O-500 MCM CU)  
INPUT #2: 400/230 VAC 3PH-4W W/GND @ 60 HZ, 400A (MAX) (2 EA. # 2/O-500 MCM CU)  
OUTPUT PB #1: 400A 42 POLE, BOLT ON CIRCUIT BREAKER (60 A MAX)  
OUTPUT PB #2: 400A 42 POLE, BOLT ON CIRCUIT BREAKER (60 A MAX)

ENVIRONMENTAL:  
OPERATING AMBIENT TEMPERATURE 0 °C TO 40 °C (32 ° F TO 104 °F)  
RELATIVE HUMIDITY: 0% TO 95 % NON-CONDENSING  
ALTITUDE: 10,000 FT MAX

UNLESS OTHERWISE SPECIFIED:  
DIMENSIONS ARE IN INCHES  
[ ] IN MILLIMETER  
ANGULAR: ±0.5° BEND ±1°  
TWO PLACE DECIMAL ±0.02  
THREE PLACE DECIMAL ±0.005

THIS DRAWING CONTAINS  
CONFIDENTIAL & PROPRIETARY  
INFORMATION AND SHALL NOT  
BE DISCLOSED OR COPIED  
WITHOUT THE EXPRESSED,  
WRITTEN PERMISSION OF  
SMITHS POWER



THIRD ANGLE PROJECTION		DO NOT SCALE DRAWING	
APPROVALS		DATE	
DRAWN	LJN	9/2/15	
CHECKED			
ENG. APPR.			

TITLE: OUT LINE MISSION CRITICAL RPP (2) 400A MAIN, (2) 400A 42P PB		
SIZE <b>B</b>	DWG. NO. <b>RPP18856</b>	REV <b>A</b>
PART NO.		SHEET 1 OF 1