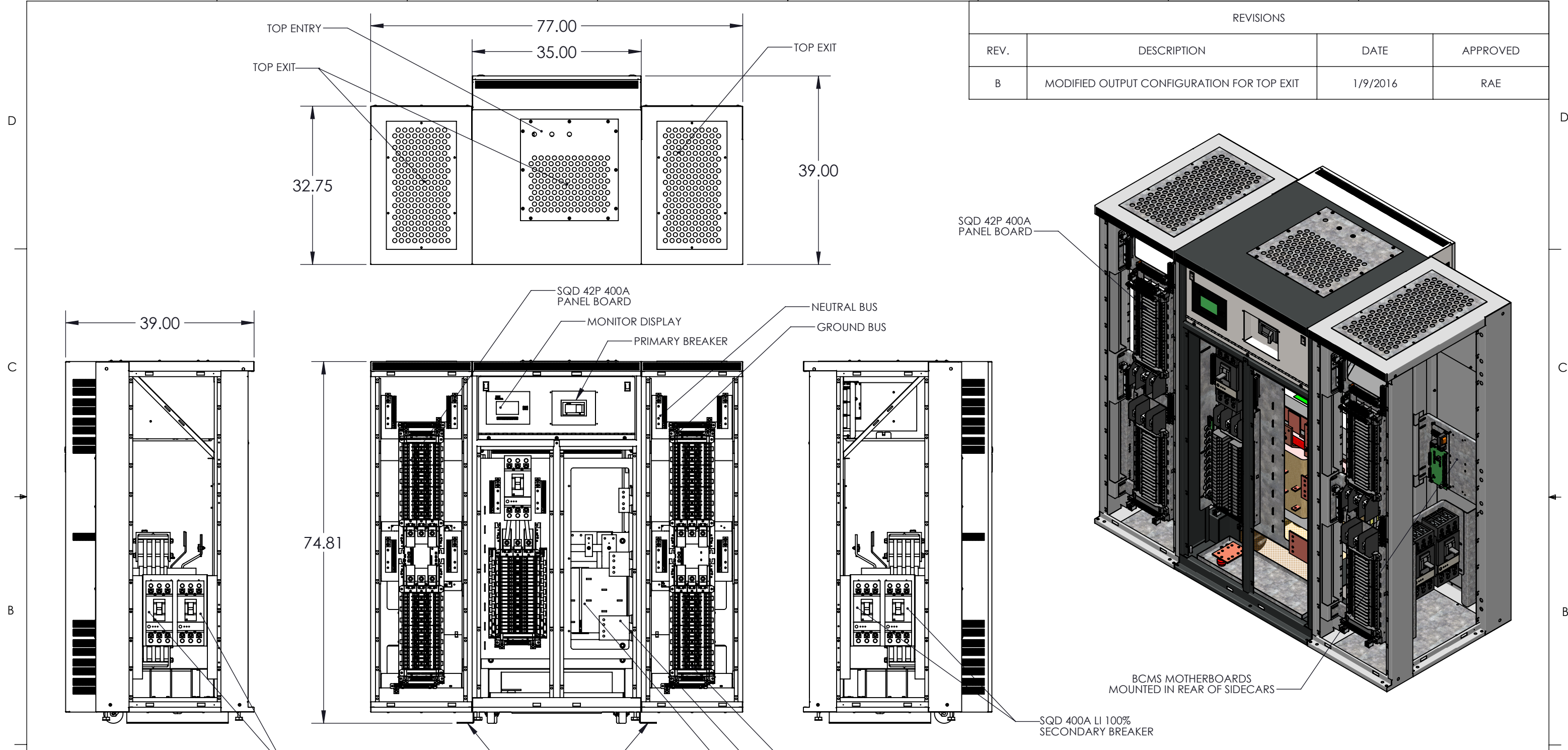


8 7 6 5 4 3 2 1



REVISIONS			
REV.	DESCRIPTION	DATE	APPROVED
B	MODIFIED OUTPUT CONFIGURATION FOR TOP EXIT	1/9/2016	RAE

GENERAL SPECIFIED

CABINET CHARACTERISTIC:
ENCLOSURE : NEMA 1
LOCATION : INDOOR
MATERIAL: STEEL
FINISH: EXTERIOR PANELS: PEARL WHITE - PHTI-60016
WEIGHT : 3900 LBS. APPROX.

ELECTRICAL:
INPUT : 480 VAC 3PH-4W W/GND @ 60 HZ
OUTPUT : (5) SQR 400A SECONDARY MAINS FEEDING
(5) SQR 400A 42 POLE PANEL BOARDS.

ENVIRONMENTAL:
OPERATING AMBIENT TEMPERATURE 0°C TO 40°C (32° F TO 104° F)
RELATIVE HUMIDITY: 0% TO 95 % NON-CONDENSING
ALTITUDE: 10,000 FT MAX

DOORS AND PANELS REMOVED FOR CLARITY

UNLESS OTHERWISE SPECIFIED: DIMENSIONS ARE IN INCHES [] IN MILLIMETER ANGULAR: ±0.5° BEND ±1° TWO PLACE DECIMAL ±0.02 THREE PLACE DECIMAL ±0.005		THIS DRAWING CONTAINS CONFIDENTIAL & PROPRIETARY INFORMATION AND SHALL NOT BE DISCLOSED OR COPIED WITHOUT THE EXPRESSED, WRITTEN PERMISSION OF SMITHS POWER		
THIRD ANGLE PROJECTION		DO NOT SCALE DRAWING		
APPROVALS		DATE		TITLE: SO-23903 Holmes Electric-Sabey QA-4A
DRAWN	RAE	1/5/2016		SIZE B
CHECKED				DWG. NO. PDU19520_B
ENG. APPR.	LN	1/5/2016		REV B
				PART NO.
				SHEET 1 OF 2

8 7 6 5 4 3 2 1

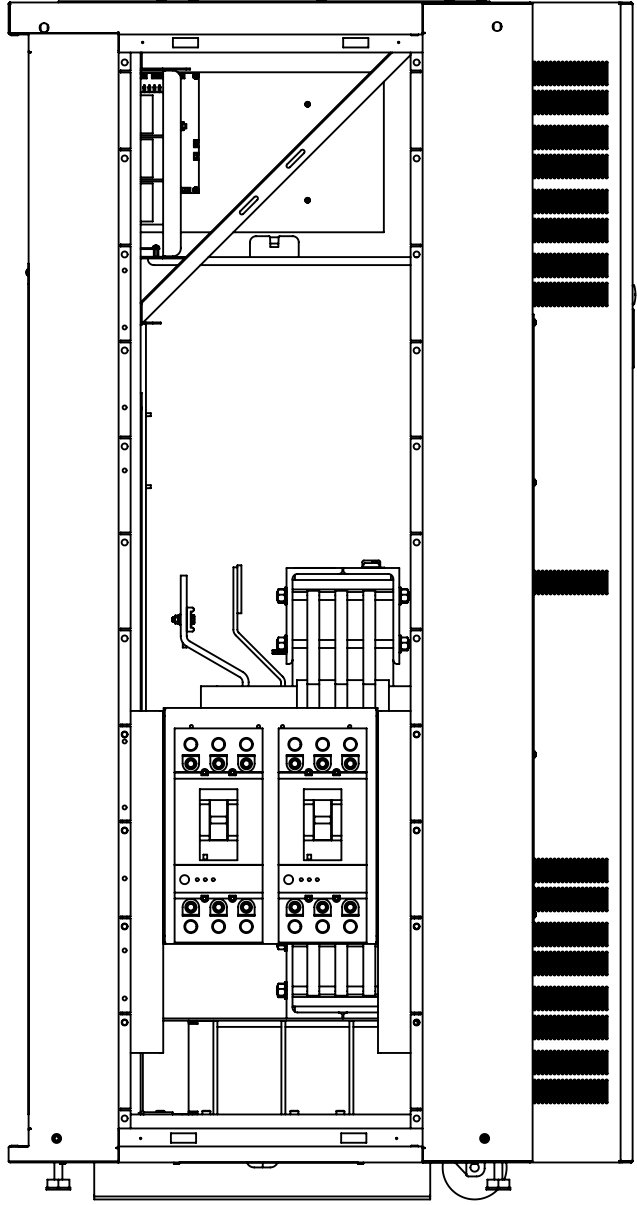
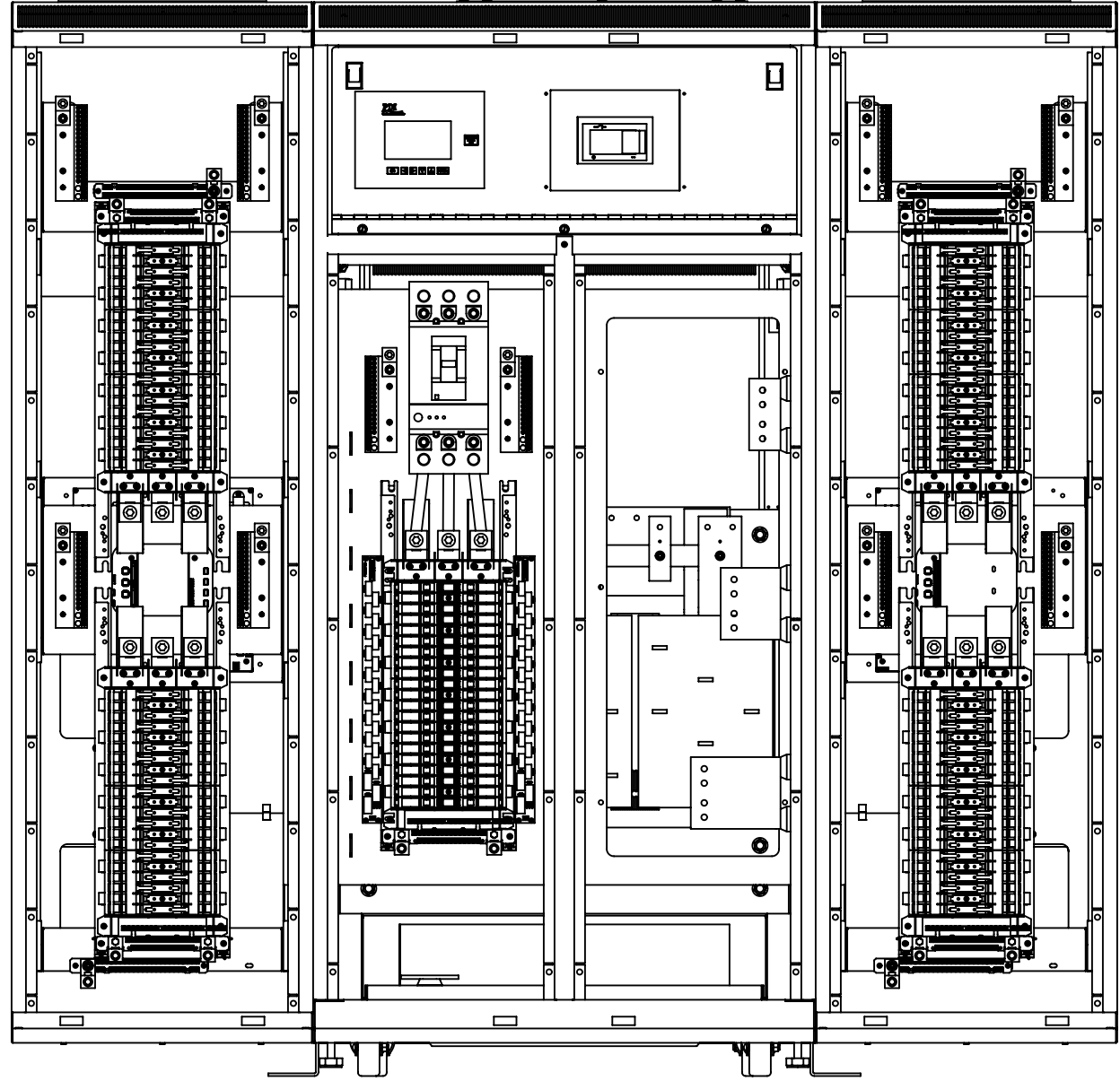
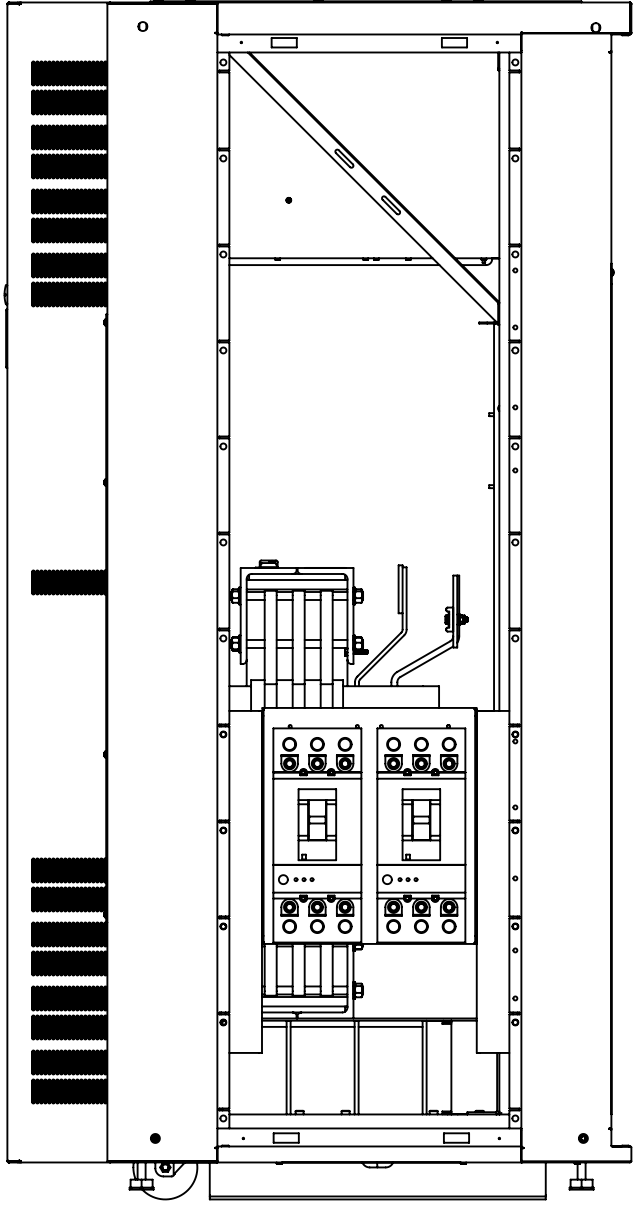
8 7 6 5 4 3 2 1

D D

C C

B B

A A



DOORS AND PANELS REMOVED FOR CLARITY

SIZE	DWG. NO.	REV
B	PDU19520_B	B
PART NO.		SHEET 2 OF 2

SO-23903 Holmes Electric-Sabey QA-4A

8 7 6 5 4 3 2 1