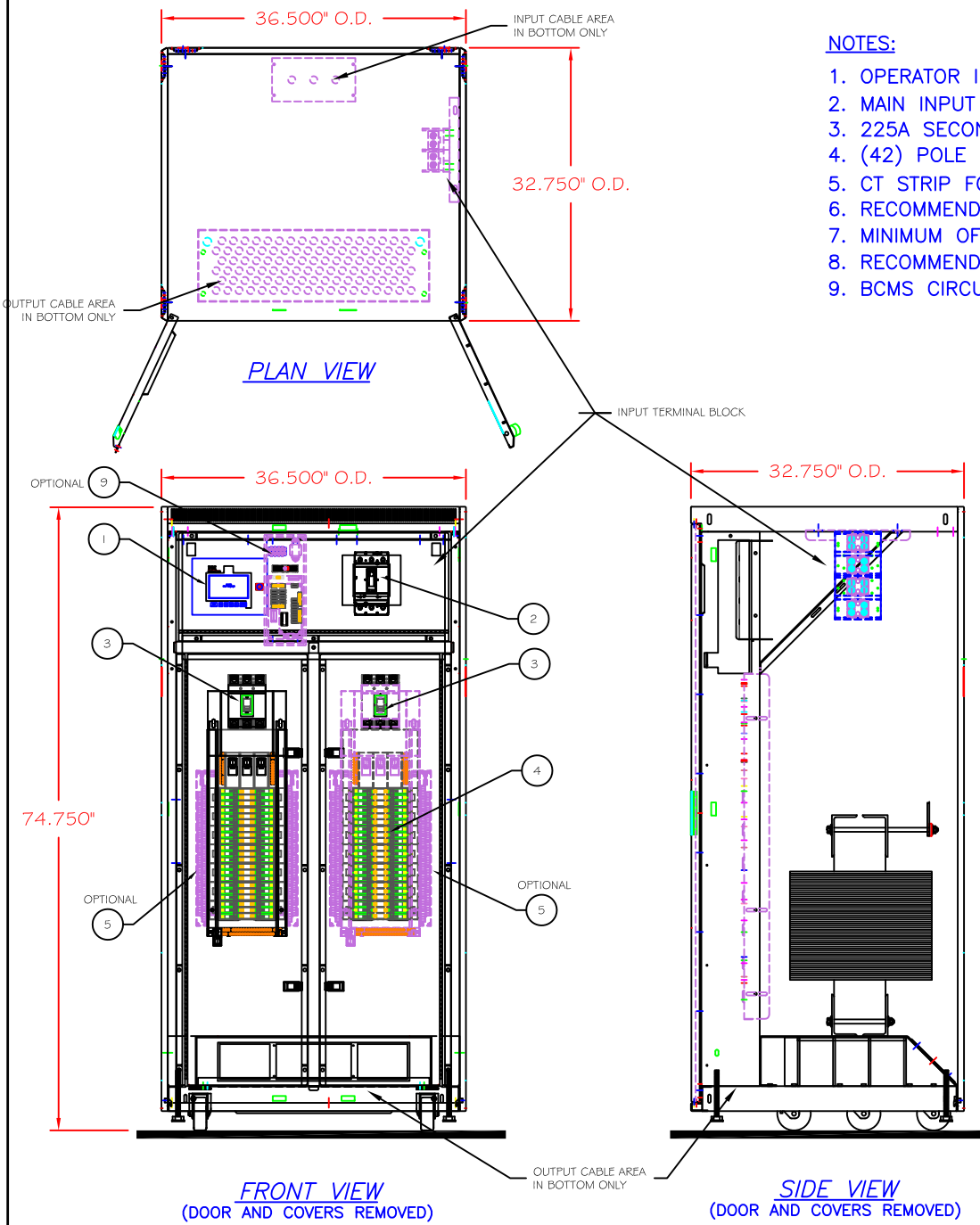


NOTES:

1. OPERATOR INTERFACE PANEL.
2. MAIN INPUT CIRCUIT BREAKER.
3. 225A SECONDARY MAIN CIRCUIT BREAKER.
4. (42) POLE DISTRIBUTION PANELBOARDS.
5. CT STRIP FOR BCMS (OPTIONAL).
6. RECOMMEND A MINIMUM OF 30" IN REAR OR SIDE OF UNIT FOR MAINTENANCE.
7. MINIMUM OF 18" CLEARANCE FOR DOOR SWING.
8. RECOMMEND 6" CLEARANCE BETWEEN VENTILATED SIDES AND WALL FOR PROPER COOLING.
9. BCMS CIRCUIT BOARD (OPTIONAL).



THIS DRAWING CONTAINS CONFIDENTIAL & PROPRIETARY INFORMATION AND SHALL NOT BE DISCLOSED OR COPIED WITHOUT THE EXPRESSED, WRITTEN PERMISSION OF POWER DISTRIBUTION INC.		-OUTLINE-	
		POWER-PAK PDU (30-150 kVA) (PDU-35-S4) (1-2) 42 POLE PANELBOARDS	
DWG. NUMBER	REVISION		
DWG11001	-A-		
DRAWN BY	CHECKED BY		
RAE	DAS		
DATE	DATE		
09-08-09	09-08-09		

