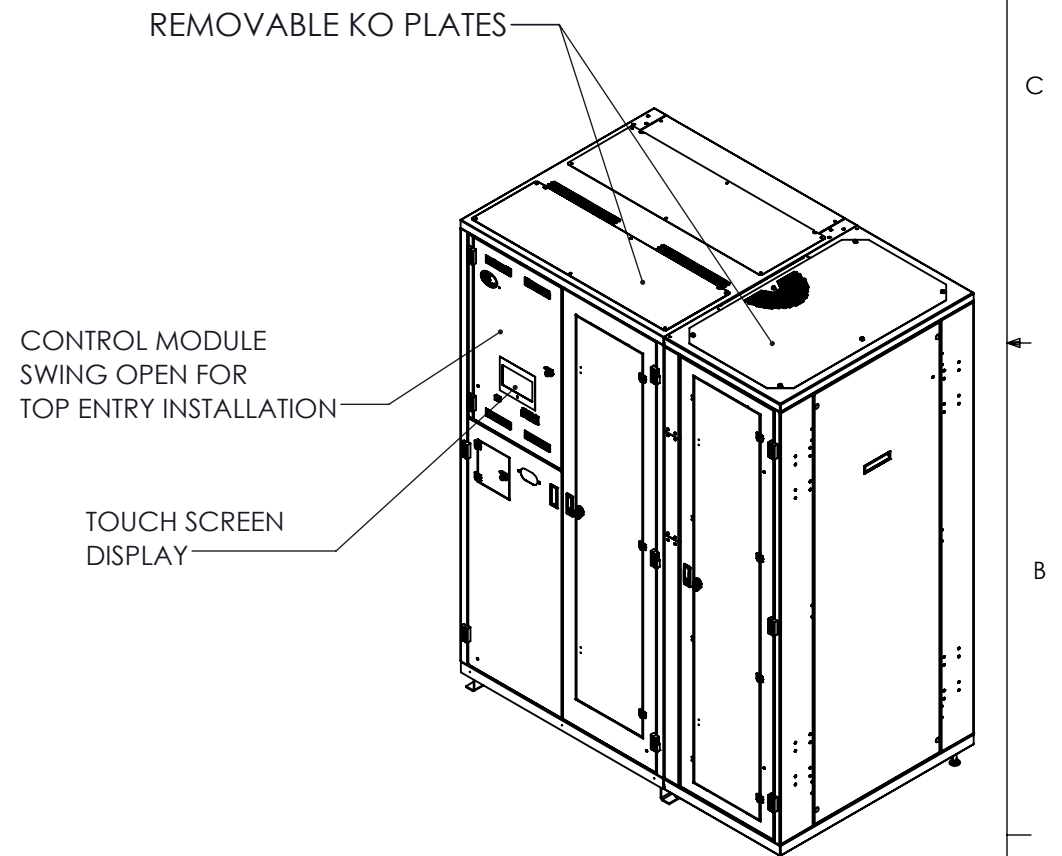
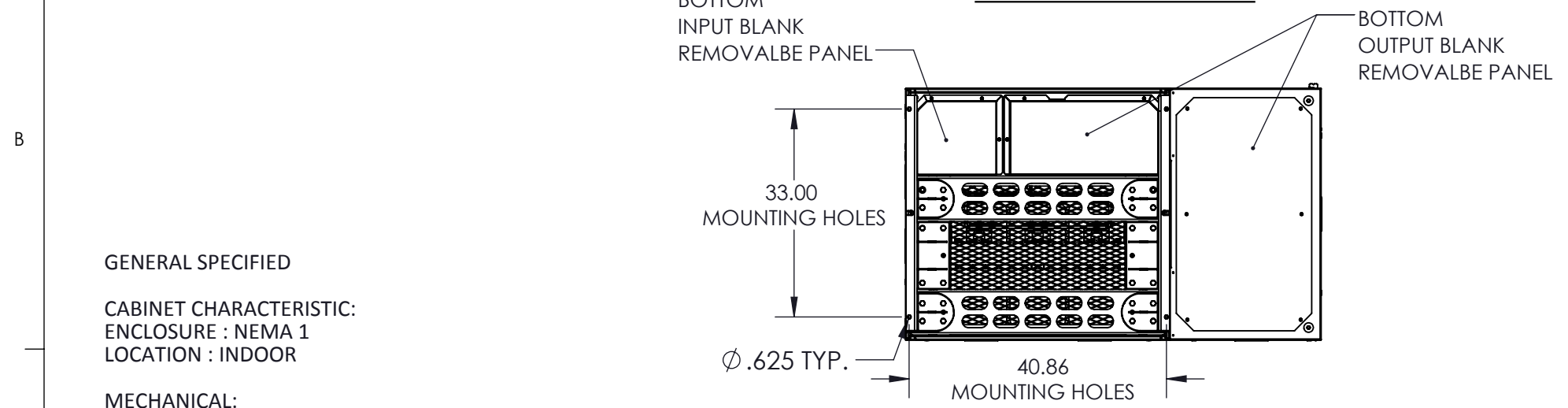


**PP2 WITH RIGHT SIDE CAR
VIEWS WITHOUT DOORS**



GENERAL SPECIFIED

CABINET CHARACTERISTIC:
ENCLOSURE : NEMA 1
LOCATION : INDOOR

MECHANICAL:
MOUNTING: BOLT TO CONCRETE OR FLOOR STAND
MATERIAL: STEEL
WEIGHT : 3500 LBS. APPROX.

ELECTRICAL:
INPUT #1: 480 VAC 3PH-3W W/GND @ 60 HZ, 700A (MAX) (3 EA. # 3/O-500 MCM AL/CU)
OUTPUT SUBFEED #1-8: 120/208 VAC, 100% CONTINUOUS LOAD (225 A MAX) (1 EA. # 3/O-350 MCM AL/CU)
OUTPUT SUBFEED #9-16: 120/208 VAC, 100% CONTINUOUS LOAD (225 A MAX) (1 EA. # 3/O-350 MCM AL/CU)

ENVIROMENTAL:
OPERATING AMBIENT TEMPERATURE 0°C TO 40°C (32°F TO 104°F)
RELATIVE HUMIDITY: 0% TO 95% NON-CONDENSING
ALTITUDE: 10,000 FT MAX

UNLESS OTHERWISE SPECIFIED: DIMENSIONS ARE IN INCHES [] IN MILLIMETER ANGULAR: ±0.5° BEND ±1° TWO PLACE DECIMAL ±0.02 THREE PLACE DECIMAL ±0.005		THIS DRAWING CONTAINS CONFIDENTIAL & PROPRIETARY INFORMATION AND SHALL NOT BE DISCLOSED OR COPIED WITHOUT THE EXPRESSED, WRITTEN PERMISSION OF SMITHS POWER		PDI
THIRD ANGLE PROJECTION		DO NOT SCALE DRAWING		
APPROVALS		DATE		TITLE: (16) 225A SUBFEED WITH SIDE CAR PP2
DRAWN				
CHECKED				
ENG. APPR.				
SIZE		DWG. NO.		REV
B		PDU56322		A
		PART NO.		SHEET 1 OF 2

8

7

6

5

4

3

2

1

D

C

B

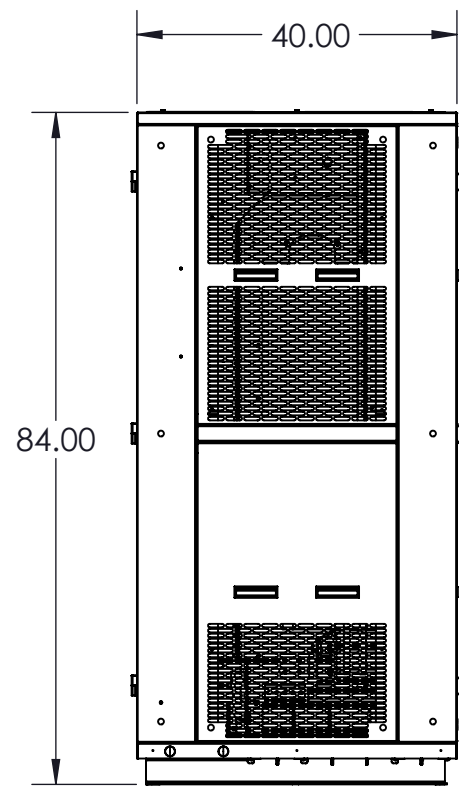
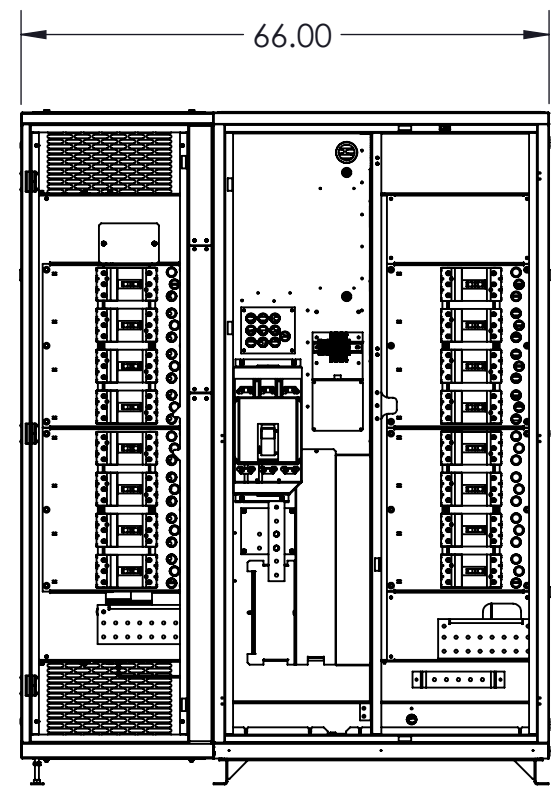
A

D

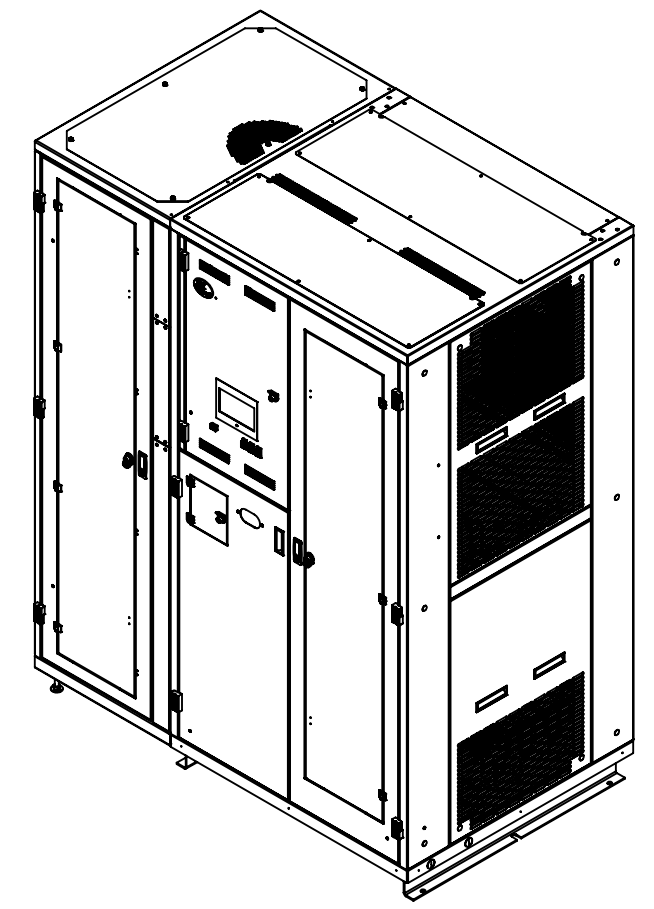
C

B

A



**PP2 WITH SYMMETRICAL SIDE CAR ON THE LEFT
VIEWS WITHOUT DOORS**



SIZE B	DWG. NO. PDU56322	REV
SCALE: NTS	SHEET 2 OF 2	

8

7

6

5

4

3

2

1