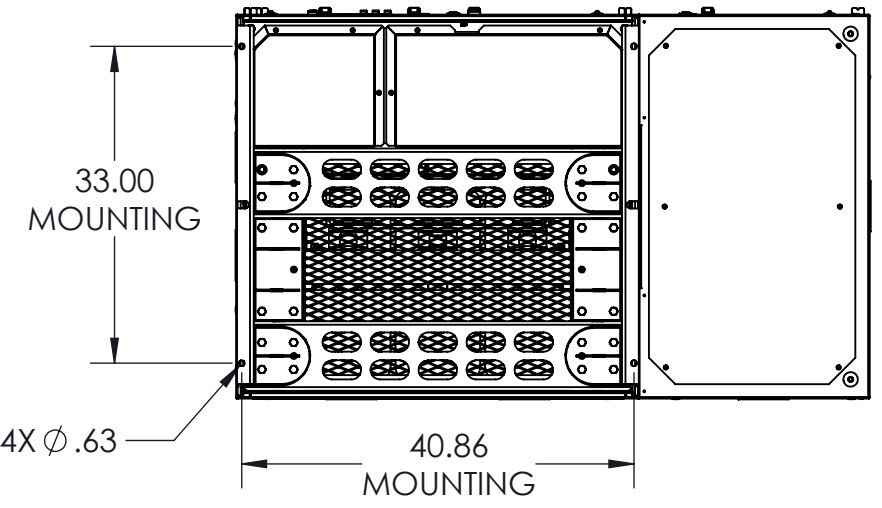
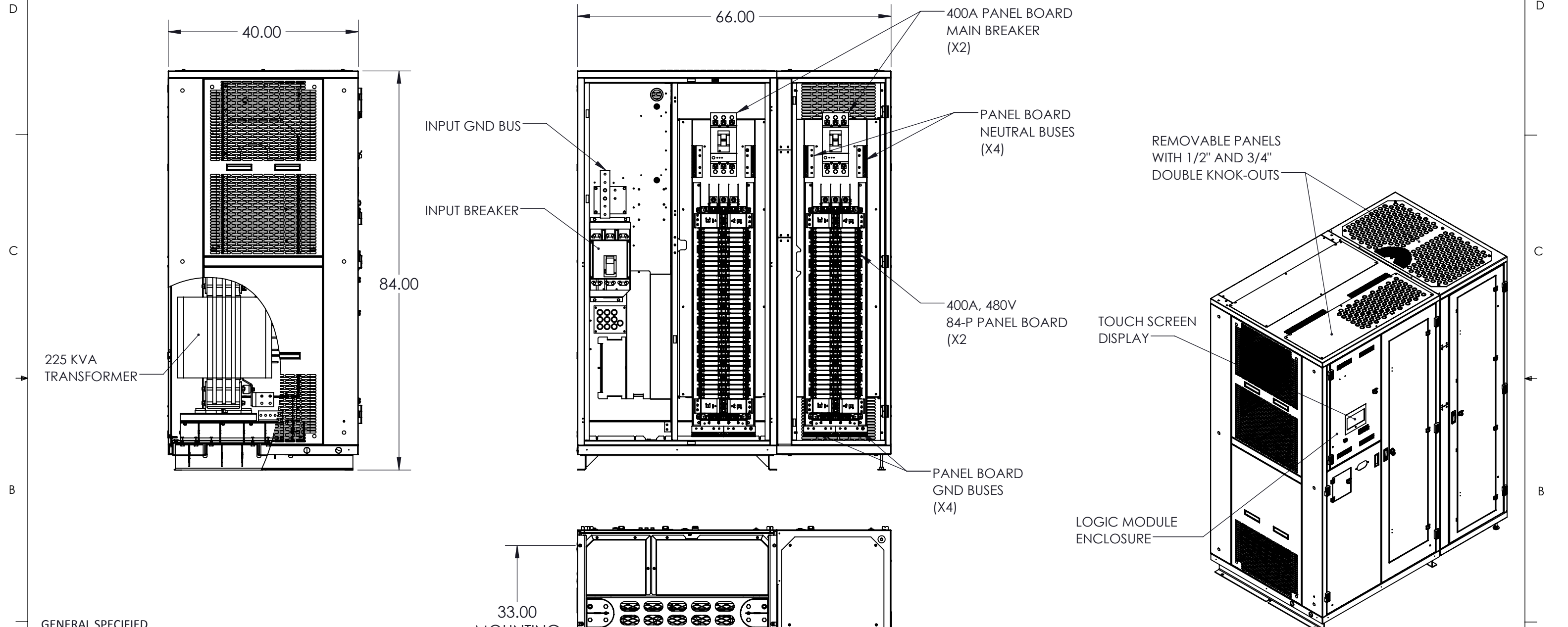


8 7 6 5 4 3 2 1




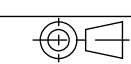
GENERAL SPECIFIED

CABINET CHARACTERISTIC:
ENCLOSURE : NEMA 1
LOCATION : INDOOR

MECHANICAL:
MOUNTING: BOLT DOWN ON CONCRETE OR FLOOR STAND
MATERIAL: STEEL
WEIGHT : 3500 LBS. APPROX.

ELECTRICAL:
INPUT #1: 480 VAC 3PH-4W W/GND @ 60 HZ, 500A MAX.
OUTPUT PB 1 to 2: 84 POLE, BOLT ON CIRCUIT BREAKER (100 A MAX)

FRONT ACCESS FOR INSTALLATION AND MAINTENANCE
ALL OPERATOR CONTROL ARE FRONT ACCESS WITHOUT EXPOSE TO LIVE PARTS
MINIMUM 6" FOR SIDE AND REAR FOR VENTILATION

UNLESS OTHERWISE SPECIFIED: DIMENSIONS ARE IN INCHES [] IN MILLIMETER ANGULAR: ±0.5° BEND ±1° TWO PLACE DECIMAL ±0.02 THREE PLACE DECIMAL ±0.005		THIS DRAWING CONTAINS CONFIDENTIAL & PROPRIETARY INFORMATION AND SHALL NOT BE DISCLOSED OR COPIED WITHOUT THE EXPRESSED, WRITTEN PERMISSION OF SMITHS POWER		
 THIRD ANGLE PROJECTION		DO NOT SCALE DRAWING		
APPROVALS		DATE		TITLE: PP2 OUTLINE DRAWING 225KVA TRANSFORMER (2) 84-P SQD NF PANEL BOARDS
DRAWN				
CHECKED				
ENG. APPR.				
SIZE	DWG. NO.	REV		
B	PDU56644	A		
PART NO.		SHEET 1 OF 1		

8 7 6 5 4 3 2 1