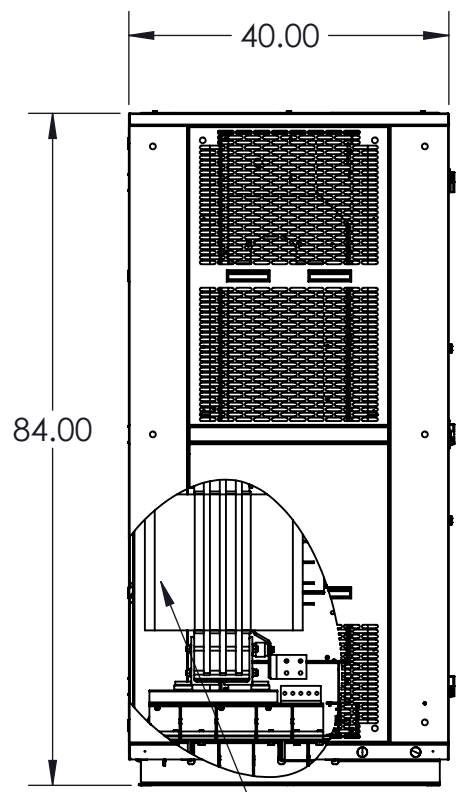


8 7 6 5 4 3 2 1

D  
C  
B  
A



TRANSFORMER  
150KVA

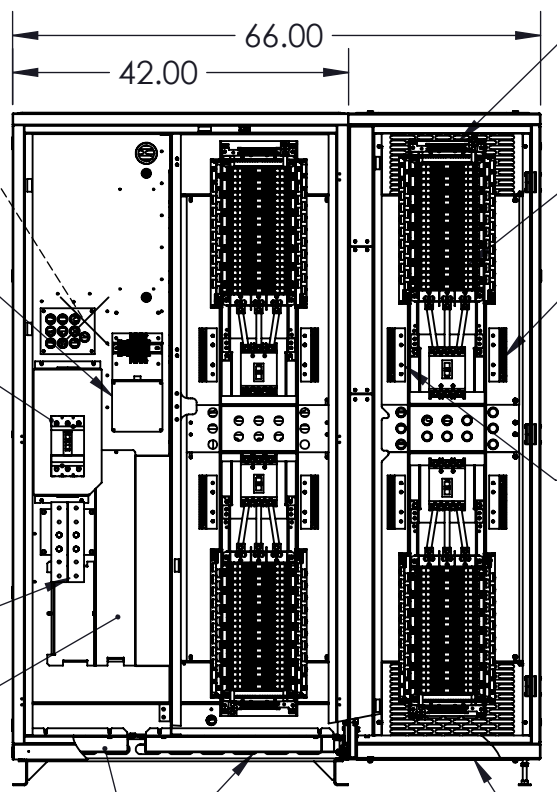
TVSS OPTION  
FOR PRIMARY OR  
SECONDARY

INPUT BREAKER  
SQ-D M, L, OR J  
FRAME OPTION

INPUT GROUND  
INPUT ISOLATED GROUND  
OPTION

VIEW SHOWS BOTTOM ENTRY  
ASSEMBLY ON DATUM A FOR  
TOP ENTRY

TRANSFORMER  
FRONT ACCESS  
REMOVABLE PANEL



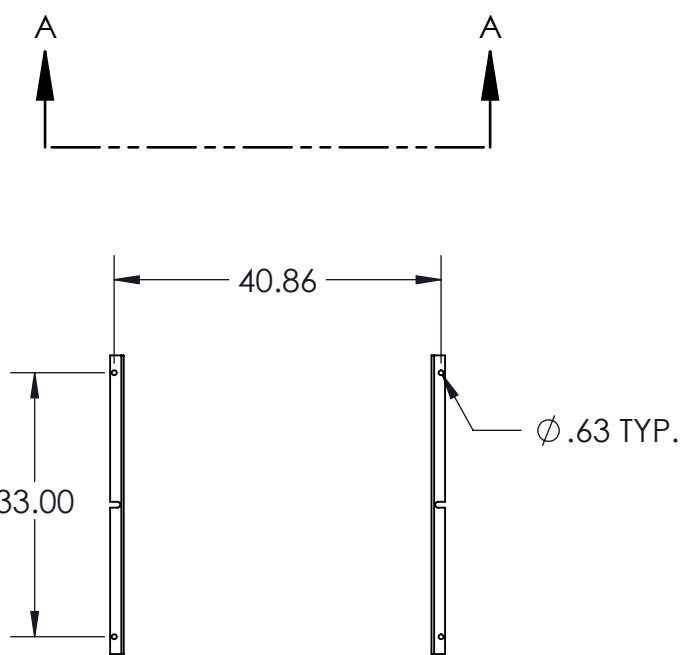
REMOVABLE KO PANELS

PANEL BOARD GROUND

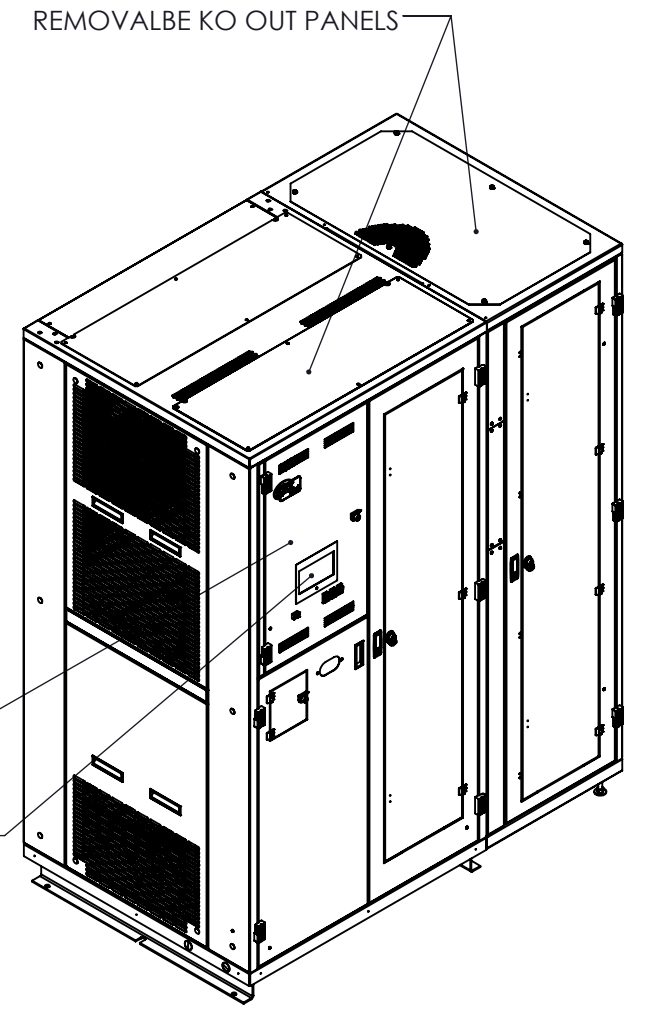
4 X 225A PANEL BOARD

PANEL BOARD NEUTRAL

PANEL BOARD  
ISOLATED GROUND  
OPTION



SECTION A-A



D  
C  
B  
A

GENERAL SPECIFIED

CABINET CHARACTERISTIC:  
ENCLOSURE : NEMA 1  
LOCATION : INDOOR

MECHANICAL:  
MOUNTING: BOLT DOWN ON CONCRETE OR FLOOR STAND  
MATERIAL: STEEL  
DEFAULT FINISH: EXTERIOR PANELS: PEARL WHITE - PHTI-60016  
WEIGHT : 3500 LBS. APPROX.

ELECTRICAL:  
INPUT #1: 208 VAC 3PH-4W W/GND @ 60 HZ  
OUTOUT PB 1 to 4: 42 POLE, BOLT ON CIRCUIT BREAKER (60 A MAX)

UNLESS OTHERWISE SPECIFIED:  
DIMENSIONS ARE IN INCHES  
[ ] IN MILLIMETER  
ANGULAR: ±0.5° BEND ±1°  
TWO PLACE DECIMAL ±0.02  
THREE PLACE DECIMAL ±0.005

THIS DRAWING CONTAINS  
CONFIDENTIAL & PROPRIETARY  
INFORMATION AND SHALL NOT  
BE DISCLOSED OR COPIED  
WITHOUT THE EXPRESSED,  
WRITTEN PERMISSION OF  
SMITHS POWER



THIRD ANGLE PROJECTION		DO NOT SCALE DRAWING
APPROVALS		DATE
DRAWN	IK	8/18/16
CHECKED	LJN	8/18/16
ENG. APPR.		

TITLE: PP2 OUTLINE 100-400 kVA, (4) 42P SQD NQ PANELBOARD		
SIZE B	DWG. NO. PDU20884	REV A
PART NO.		SHEET 1 OF 1

8 7 6 5 4 3 2 1

**POWER**

**NEUTRAL**

**GROUND**

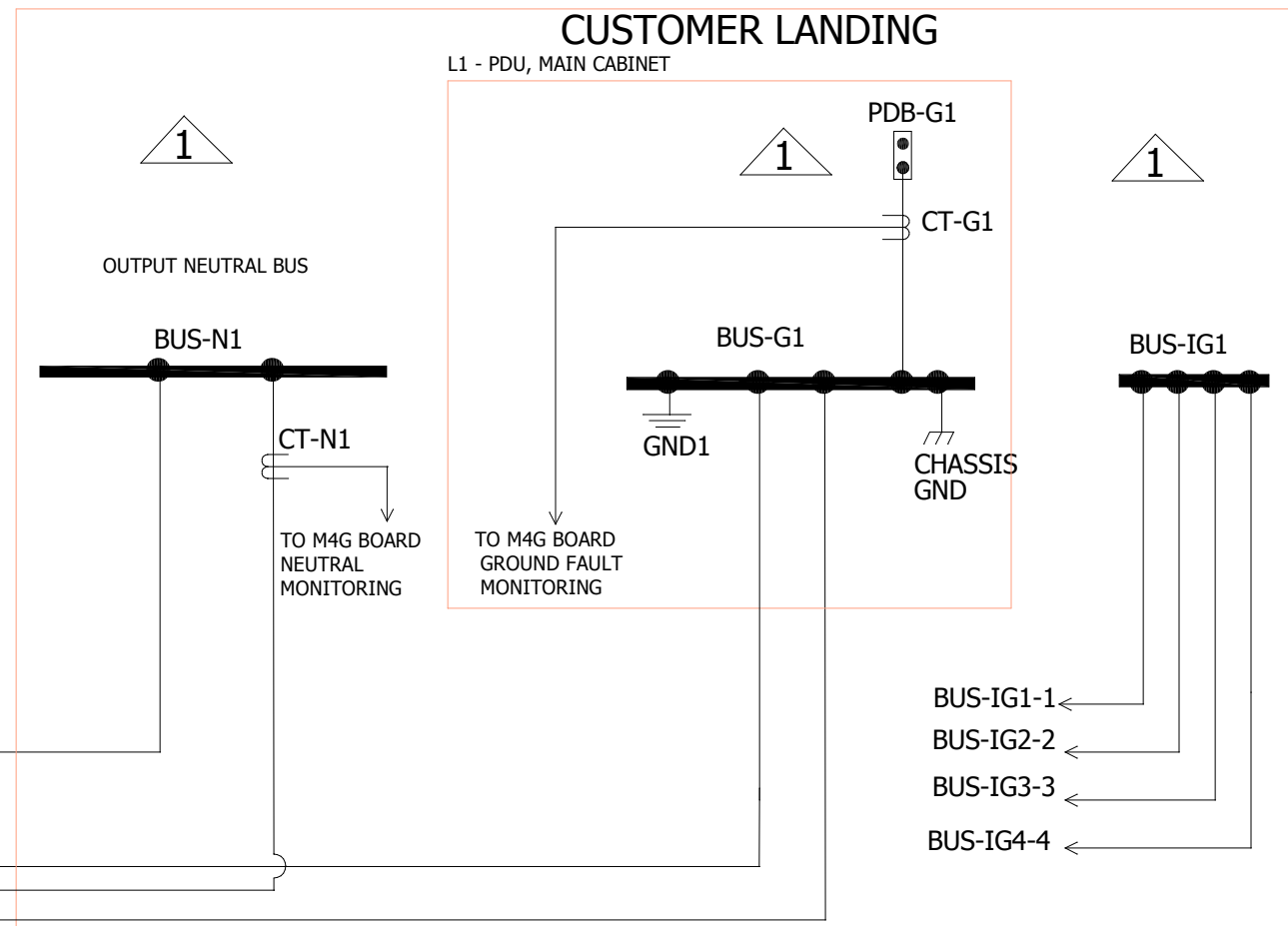
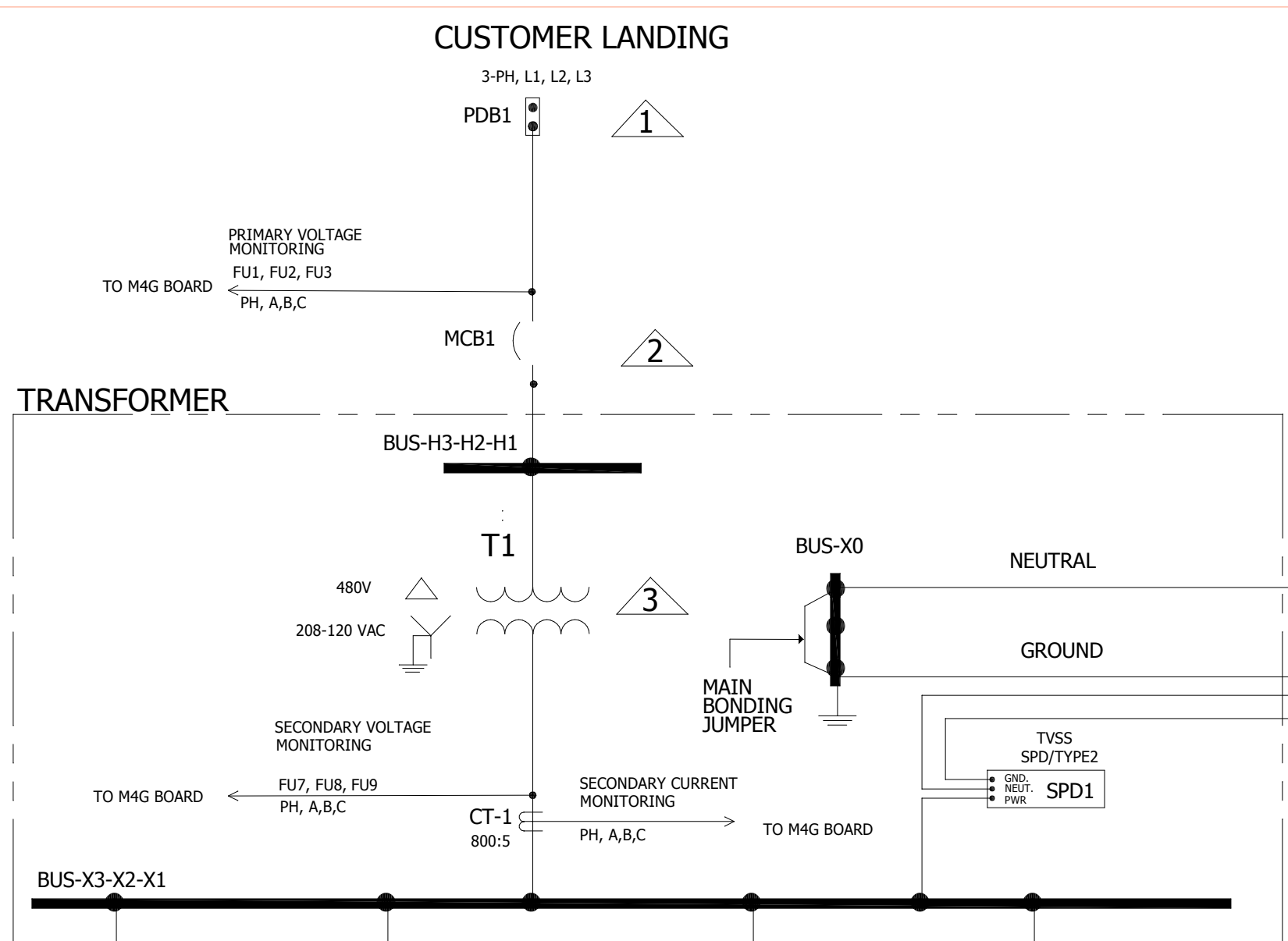
L1 - PDU, MAIN CABINET

L3 - RIGHT - SIDE CAR

**CUSTOMER LANDING**

**CUSTOMER LANDING**


L1 - PDU, MAIN CABINET



FUSE TABLE			
FUSE	AC VOLTAGE	AMPERAGE	CLASS
FU1	600V	2 1/2A	CC
FU2	600V	2 1/2A	CC
FU3	600V	2 1/2A	CC
FU7	600V	2 1/2A	CC
FU8	600V	2 1/2A	CC
FU9	600V	2 1/2A	CC

ABBREVIATIONS	
CB	CIRCUIT BREAKER
CKT	CIRCUIT
CT	CURRENT TRANSFORMER
G, GND	GROUND
FU	FUSE
IG	ISOLATED GROUND
MCB	MAIN CIRCUIT BREAKER
N	NEUTRAL
PDB	POWER DISTRIBUTION BLOCK
PH	PHASE
SPD	SURGE PROTECTIVE DEVICE
T	TRANSFORMER

- NOTE:**
- 1 - (2) 350KCMIL-#6AWG PER PHASE OR NEUTRAL
  - 2 - 250AF/225AT 80% RATED
  - 3 - 150KVA K-20, DOE 2016 7.5-% STANDARD IMPEDANCE 8-10X STANDARD INRUSH 150C RISE



THIS DRAWING CONTAINS CONFIDENTIAL & PROPRIETARY INFORMATION AND SHALL NOT BE DISCLOSED OR COPIED WITHOUT THE EXPRESSED, WRITTEN PERMISSION OF POWER DISTRIBUTION INC.

APPROVALS		DATE
DRAWN:	DLB	8/23/2016
CHECKED:	BR	8/23/2016
ENG. APPR:	BR	8/23/2016

TITLE: -PDU ONELINE- 150KVA,480V-208/120VAC

SIZE <b>D</b>	DWG. NO. PDU20884-O	REV B
---------------	---------------------	-------

SHEET 01 OF 1

