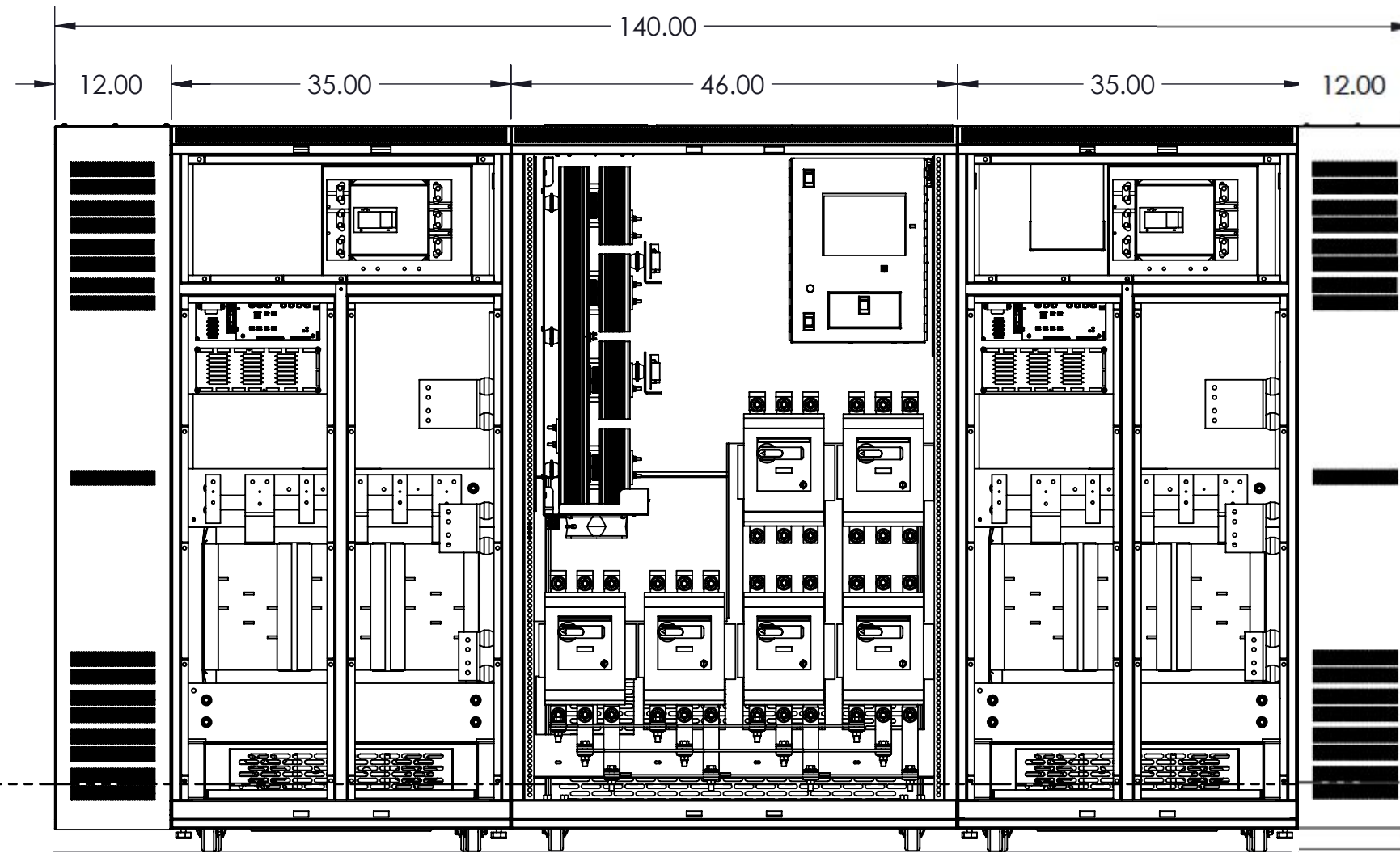


SIDE VIEW



FRONT VIEW
(DOORS & COVER REMOVE)

NOTES:

1. MAIN INPUT CIRCUIT BREAKER
2. SCR MODULE.
3. OPERATOR INTERFACE PANEL.
4. I-LINE PANEL BOARD w/ BREAKER
5. RECOMMENDED A MINIMUM OF 30" CLEARANCE ON SIDE OF UNIT FOR MAINTENANCE.
6. ALLOW 36" FOR DOOR CLEARANCE.
7. INPUT/OUTPUT TRANSFORMER (FRONT ACCESS) 288kVA 575-208/120V.
8. STATIC TRANSFER SWITCH WEIGHT IS 1800 LBS.
9. 288kVA PDU WEIGHT IS 3225 LBS EACH.

ESTIMATED BTU LOSSES AT FULL LOAD ARE AS FOLLOWS:
1. SYSTEM TOTAL: APPROXIMATELY 65 KBTU'S

UNLESS OTHERWISE SPECIFIED:
DIMENSIONS ARE IN INCHES
[] IN MILLIMETER
ANGULAR: ±0.5° BEND ±1°
TWO PLACE DECIMAL ±0.02
THREE PLACE DECIMAL ±0.005

THIS DRAWING CONTAINS
CONFIDENTIAL & PROPRIETARY
INFORMATION AND SHALL NOT
BE DISCLOSED OR COPIED
WITHOUT THE EXPRESSED,
WRITTEN PERMISSION OF
SMITHS POWER

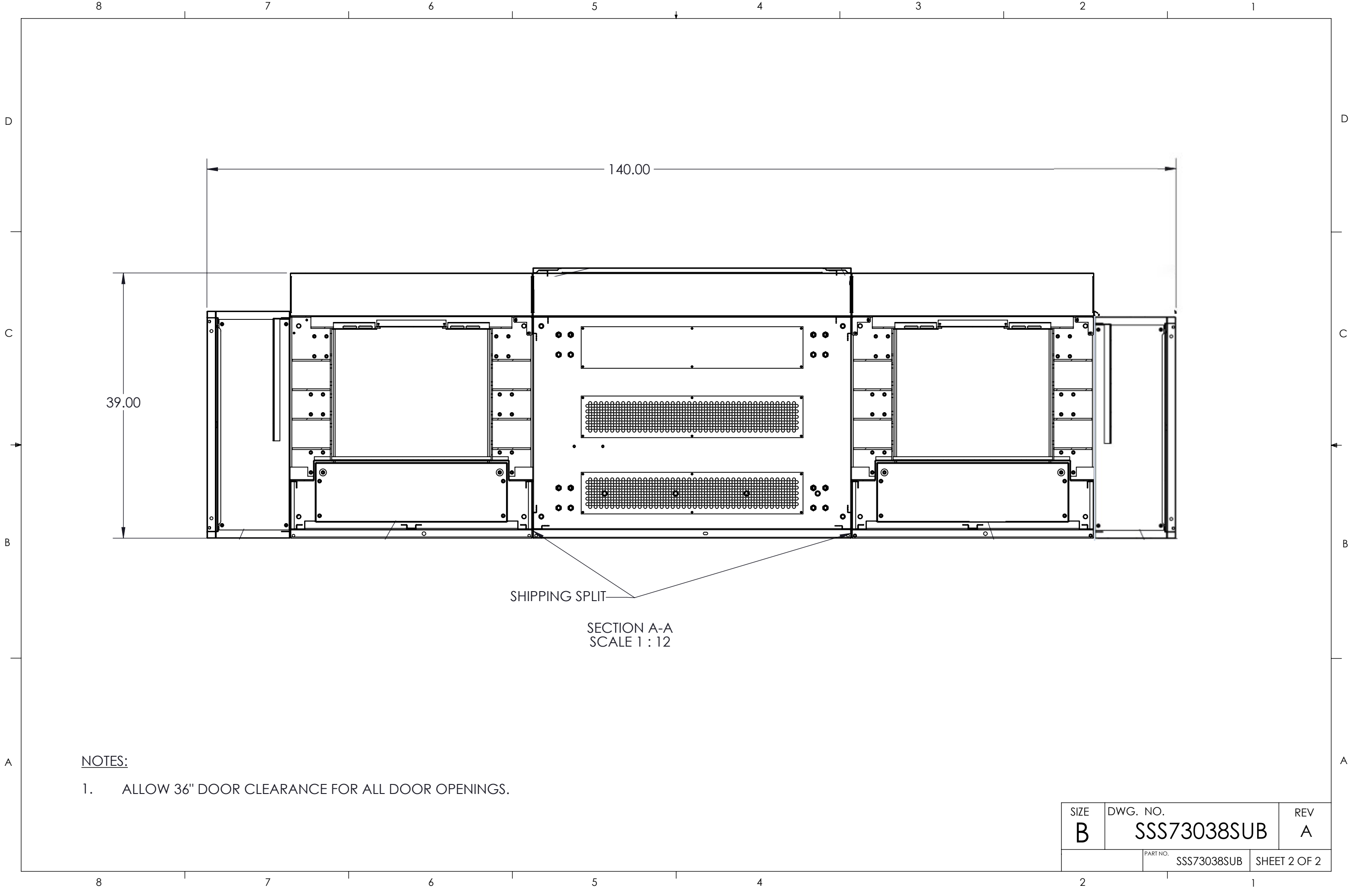


THIRD ANGLE PROJECTION
DO NOT SCALE DRAWING

TITLE:
STATIC SWITCH SECONDARY SYSTEM
800A WITH (2) PDU's w/ 12" Sidecars

APPROVALS		DATE
DRAWN	SB	1/21/21
CHECKED	RAE	1/21/21
ENG. APPR.	WM	1/21/21

SIZE B	DWG. NO. SSS73038SUB	REV A
------------------	--------------------------------	----------



SHIPPING SPLIT
SECTION A-A
SCALE 1 : 12

NOTES:

- 1. ALLOW 36" DOOR CLEARANCE FOR ALL DOOR OPENINGS.

SIZE B	DWG. NO. SSS73038SUB	REV A
PART NO. SSS73038SUB		SHEET 2 OF 2