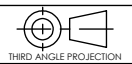


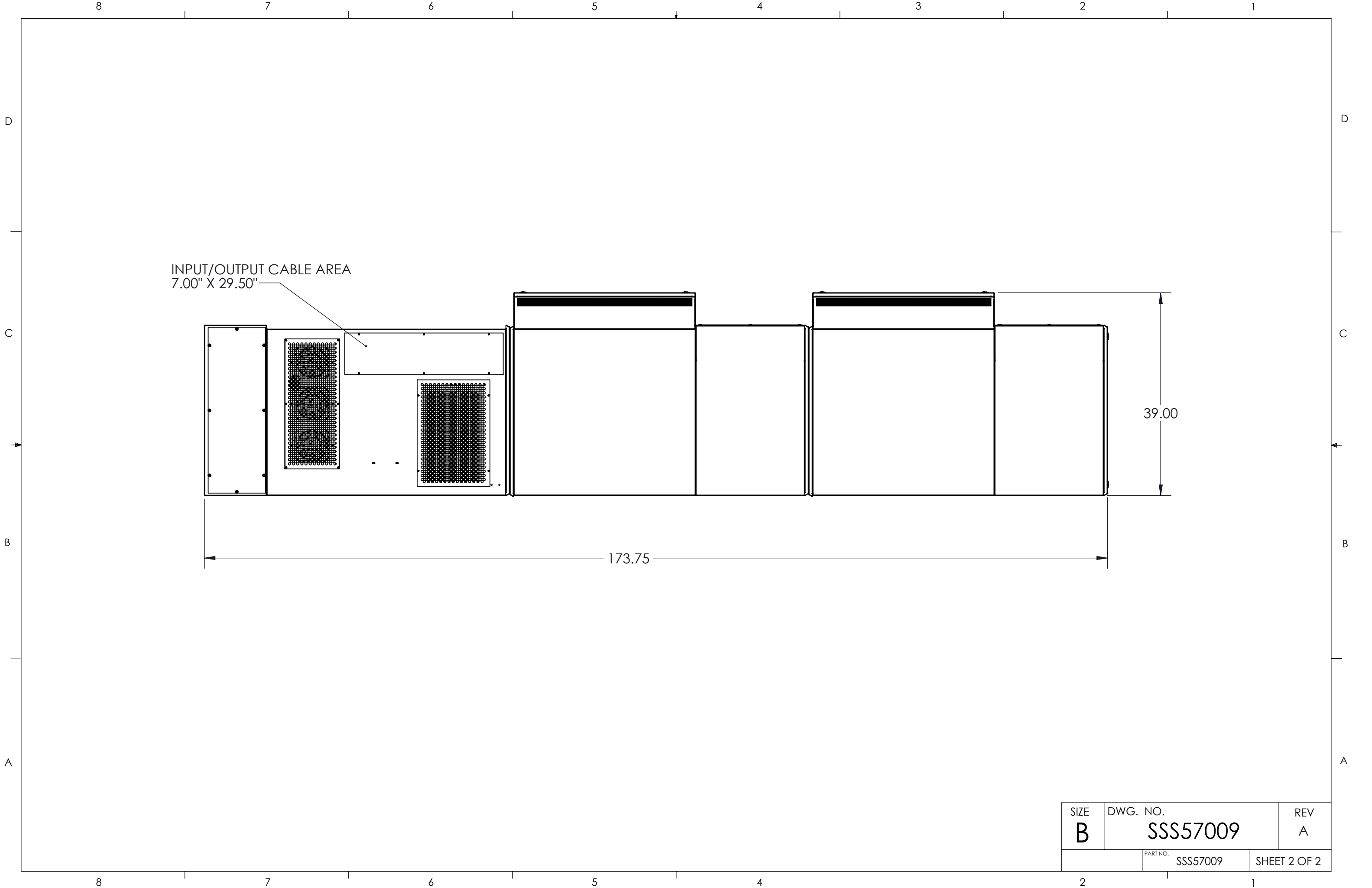
SIDE VIEW

FRONT VIEW
(DOORS & COVER REMOVE)

NOTES:

1. OPERATOR INTERFACE PANEL.
2. SCR MODULE.
3. MOLDED CASE INPUT SWITCH/CIRCUIT BREAKER.
4. MOLDED CASE BYPASS SWITCH.
5. MOLDED CASE ISOLATION SWITCH(2nd SWITCH OPTIONAL).
6. MAIN INPUT CIRCUIT BREAKER.
7. I-LINE PANEL BOARD.
8. INPUT/OUTPUT TRANSFORMER (FRONT ACCESS)
9. 1200 AMP CIRCUIT BREAKER.
10. ALLOW 36" CLEARANCE FOR FRONT DOOR SWING.
11. ALLOW A MINIMUM OF 36" CLEARANCE ON LEFT SIDE FOR SIDECAR DOOR SWING.
12. RECOMMEND A MINIMUM OF 6" CLEARANCE BETWEEN WALL & VENTILATED SIDES FOR PROPER COOLING.
11. ACCESS TO REAR IS REQUIRED FOR INSTALATION.

UNLESS OTHERWISE SPECIFIED: DIMENSIONS ARE IN INCHES [] IN MILLIMETER ANGULAR: ±0.5° BEND ±1° TWO PLACE DECIMAL ±0.02 THREE PLACE DECIMAL ±0.005		THIS DRAWING CONTAINS CONFIDENTIAL & PROPRIETARY INFORMATION AND SHALL NOT BE DISCLOSED OR COPIED WITHOUT THE EXPRESSED, WRITTEN PERMISSION OF SMITHS POWER		PDI
 THIRD ANGLE PROJECTION		DO NOT SCALE DRAWING		
APPROVALS		DATE		SIZE DWG. NO. REV B SSS57009 A
DRAWN	MJP	4/24/17		
CHECKED	RAE	4/24/17		
ENG. APPR.	LJN	4/24/17		
		PART NO.		SHEET 1 OF 2



INPUT/OUTPUT CABLE AREA
7.00" X 29.50"

173.75

39.00

SIZE B	DWG. NO. SSS57009	REV A
	PART NO. SSS57009	SHEET 2 OF 2