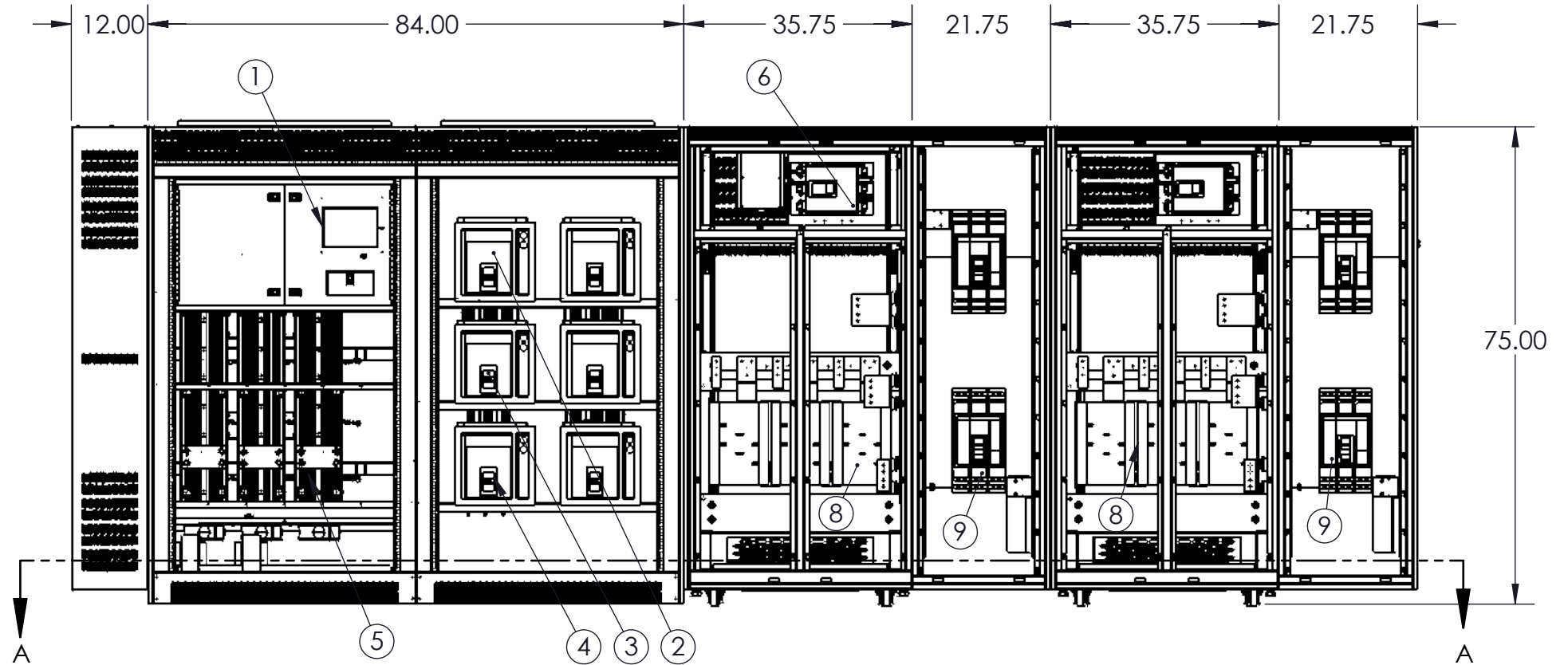


SIDE VIEW



FRONT VIEW
(DOORS & COVER REMOVE)

NOTES:

1. OPERATOR INTERFACE PANEL.
2. SCR MODULE.
3. MOLDED CASE INPUT SWITCH/CIRCUIT BREAKER.
4. MOLDED CASE BYPASS SWITCH.
5. MOLDED CASE ISOLATION SWITCH(2nd SWITCH OPTIONAL).
6. MAIN INPUT CIRCUIT BREAKER.
7. I-LINE PANEL BOARD.
8. INPUT/OUTPUT TRANSFORMER (FRONT ACCESS)
9. 1200 AMP CIRCUIT BREAKER.
10. ALLOW 36" CLEARANCE FOR FRONT DOOR SWING.
11. ALLOW A MINIMUM OF 36" CLEARANCE ON LEFT SIDE FOR SIDECAR DOOR SWING.
12. RECOMMEND A MINIMUM OF 6" CLEARANCE BETWEEN WALL & VENTILATED SIDES FOR PROPER COOLING.
11. ACCESS TO REAR IS REQUIRED FOR INSTALATION.

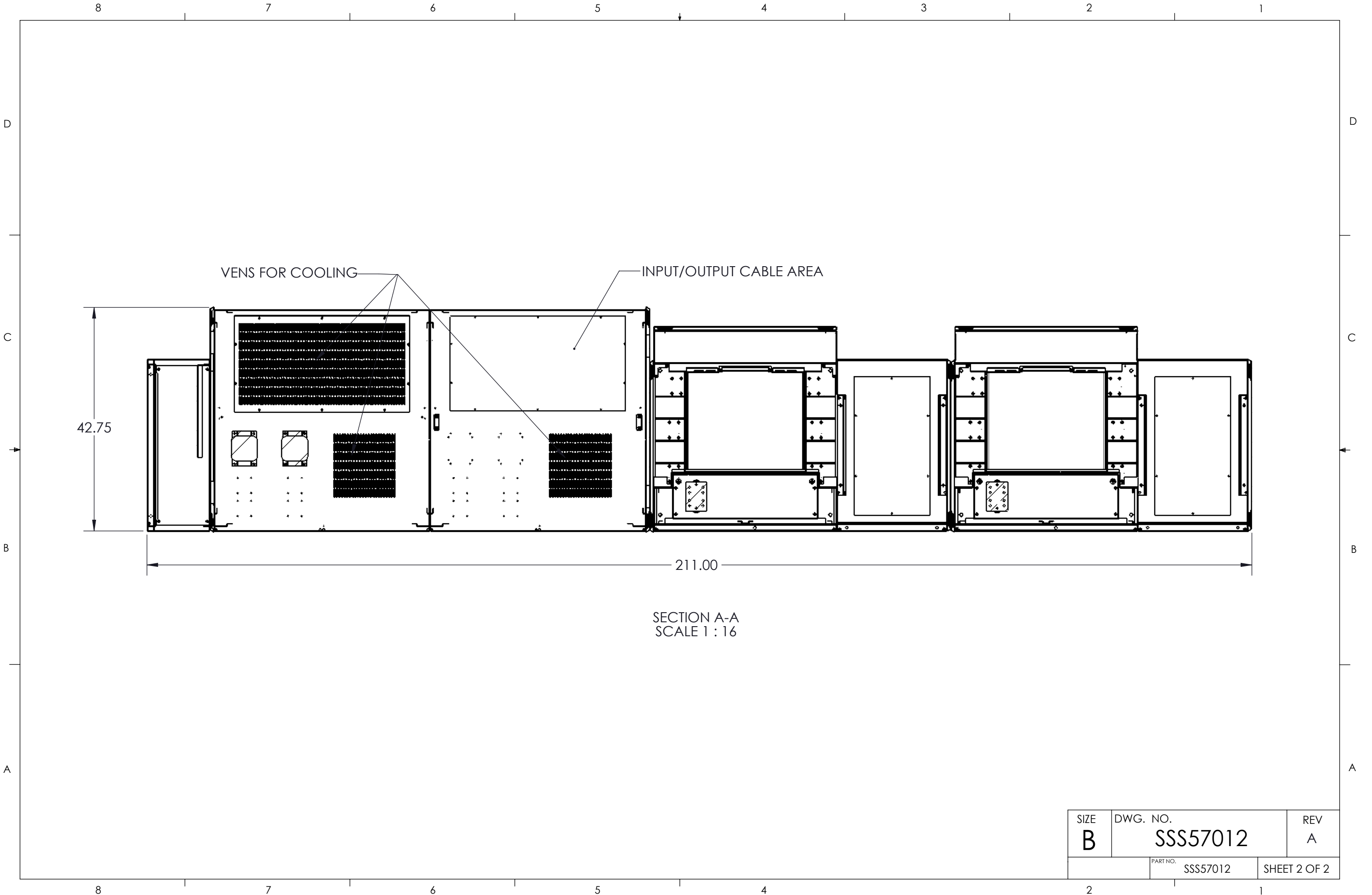
UNLESS OTHERWISE SPECIFIED:
DIMENSIONS ARE IN INCHES
[] IN MILLIMETER
ANGULAR: ±0.5° BEND ±1°
TWO PLACE DECIMAL ±0.02
THREE PLACE DECIMAL ±0.005

THIS DRAWING CONTAINS
CONFIDENTIAL & PROPRIETARY
INFORMATION AND SHALL NOT
BE DISCLOSED OR COPIED
WITHOUT THE EXPRESSED,
WRITTEN PERMISSION OF
SMITHS POWER



		DO NOT SCALE DRAWING
APPROVALS		DATE
DRAWN	MJP	4/24/17
CHECKED	RAE	4/24/17
ENG. APPR.	LJN	4/24/17

TITLE: STATIC SWITCH SECONDARY SYSTEM 300 KVA PDU, 1000A STS, WITH I-LINE		
SIZE B	DWG. NO. SSS57012	REV A
PART NO.		SHEET 1 OF 2



SIZE B	DWG. NO. SSS57012	REV A
	PART NO. SSS57012	SHEET 2 OF 2