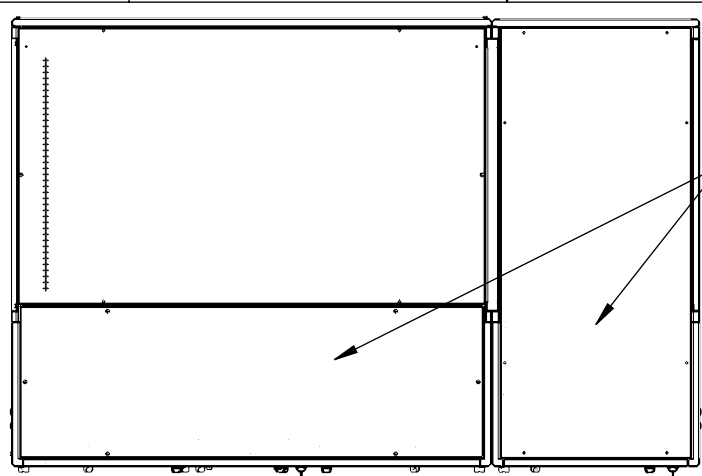


REVISIONS				
REV.	ECN #	DESCRIPTION	DATE	APPROVED
X0		SUBMITTAL RELEASE	10/25/19	AD



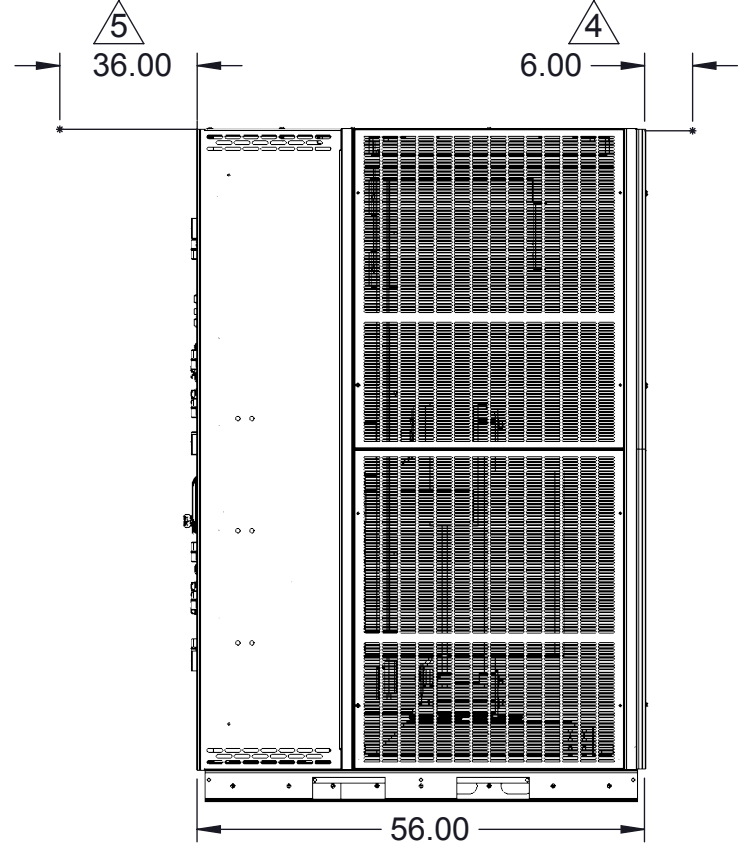
**TOP VIEW**

CONDUIT AREA

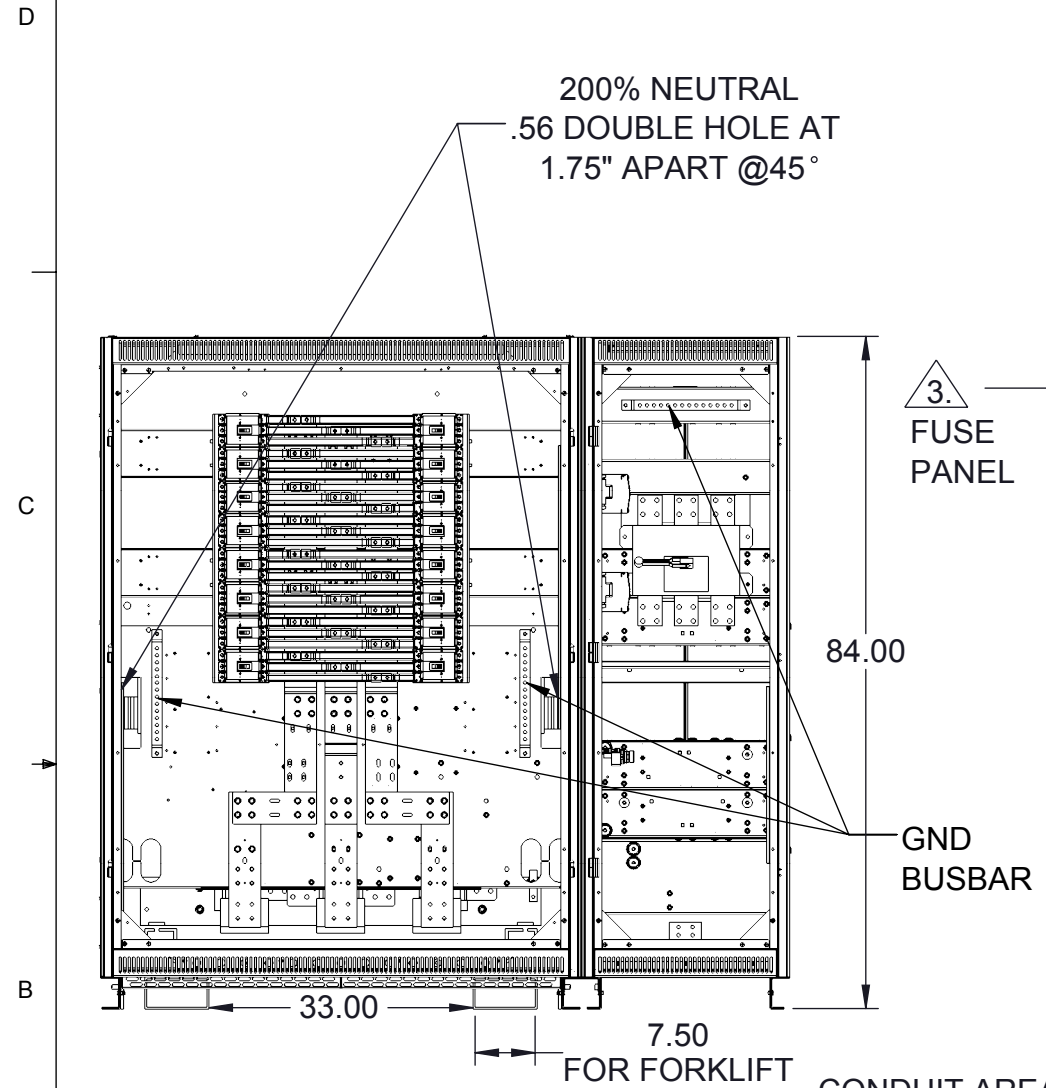
3 CONTROL CHASSIS:  
-CONTRACTOR BOARD  
-BCMS  
-M4G  
-USB

3 PDG2-FRAME  
16X 225A OUTPUT

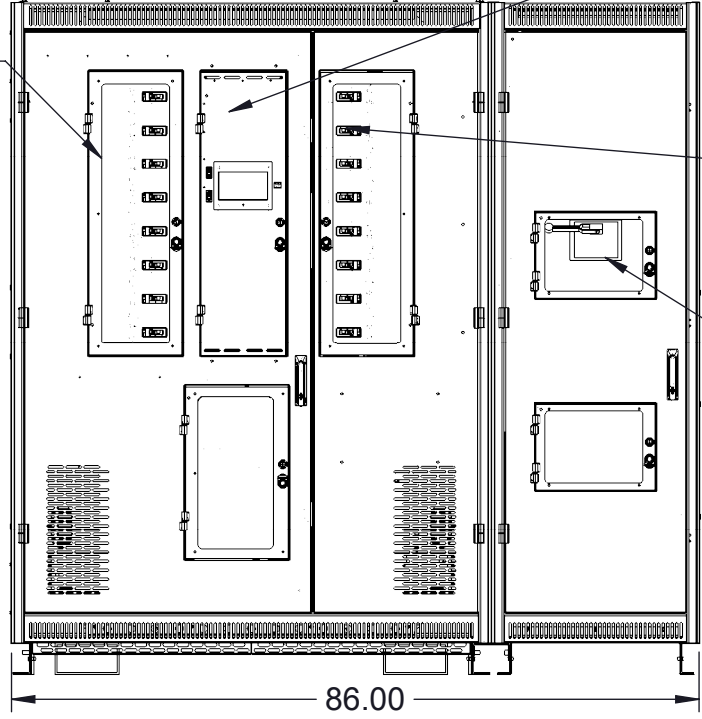
3 R-FRAME  
MAIN INPUT  
1500A



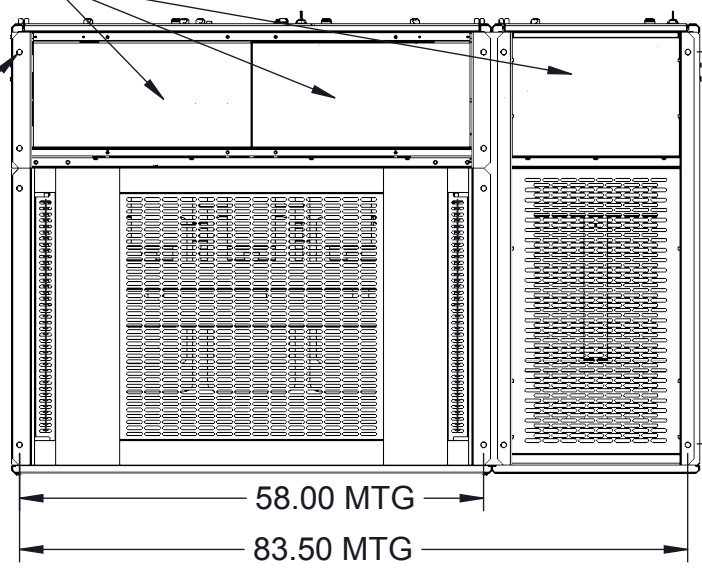
**SIDE VIEW**



**FRONT VIEW**  
(DOOR NOT SHOW FOR CLARITY)



**FRONT VIEW**



**BOTTOM VIEW**

- 7. RECOMMENDED INPUT CABLE SIZE: (6)700MCM CU PER PHASE
- 6. APPROXIMATE WEIGHT: 10000 LB
- 5. MINIMUM CLEARANCE FOR DOORS.
- 4. MINIMUM VENTILATION CLEARANCE FOR REAR AND ONE SIDE OF UNIT.
- 3. ALL OPERATOR CONTROLS ARE FRONT ACCESS WITHOUT EXPOSURE TO LIVE PARTS.
- 2. ALL ROUTINE MAINTENANCE IS FRONT AND SIDE ACCESS.
- 1. ALL DIMENSIONS ARE IN INCHES.

NOTES: UNLESS OTHERWISE SPECIFIED

UNLESS OTHERWISE SPECIFIED:  
DIMENSIONS AND TOLERANCES PER ASME Y14.5-2009  
DIMENSIONS: INCHES  
TOLERANCES:  
ANGULAR (DEGREES): ±  
TWO PLACE DECIMAL: ±  
THREE PLACE DECIMAL: ±

		THIRD ANGLE PROJECTION			THIS DRAWING CONTAINS CONFIDENTIAL & PROPRIETARY INFORMATION AND SHALL NOT BE DISCLOSED OR COPIED WITHOUT THE EXPRESSED, WRITTEN PERMISSION OF POWER DISTRIBUTION, INC.	
MATERIAL: SEE BOM			DESCRIPTION: PDU 1000KVA 1X1500A 16X255A			
APPROVALS		DATE	SIZE	DWG. NO.	REV	
DRAWN BY	AD	10/25/19	B	11300119SUB	X0	
CHECKED BY	RS	10/25/19				
APPROVED BY	MW	10/25/19	SCALE:			SHEET 1 OF 1