

REVISIONS				
REV.	ECN #	DESCRIPTION	DATE	APPROVED
A	N/A	PRELIMINARY SUBMITTAL "NQ"	5/6/16	LN

- NOTES:**
- ALL DIMENSION ARE IN INCHES.
 - THE UNIT CAN BE ALSO WALL MOUNTED
 - THE UNIT CAN BE FREE STANDING ONLY WHEN PROPERLY SECURED TO THE FLOOR OR BASE. (RECOMMENDED HARDWARE: 3/8-16 GRADE 5 MIN) FRONT ACCESS FOR MAINTENANCE NEED 36 IN CLEARANCE.
 - UNIT WEIGHT: 300 LBS APPROX.
 - UNIT IS TOP OR BOTTOM CABLE ENTRY IN THIS CONFIGURATION.
 - INPUT CABLE SIZE: (2) 250MCM CU MAX. INPUT CONDUIT SIZE: (2) X 4" MAX.
 - ALL CUSTOMER SUPPLIED CABLE CONNECTIONS BASED ON 75°C COPPER WIRE.
 - CONSULT NEC AND LOCAL REGULATIONS.

NOTES: UNLESS OTHERWISE SPECIFIED

- DIMENSIONS AND TOLERANCES PER ASME Y14.5-2009
- MATERIAL:
- REMOVE ALL SHARP EDGES
- POWDER COAT: SEE FILE EXTENSION IN PURCHASE ORDER AND INTERNAL DOCUMENT DDC18374 FOR STANDARD COLOR
- POWDER COAT: SHERWIN WILLIAMS "PEARL WHITE - PHTI-60016"
- POWDER COAT: SHERWIN WILLIAMS "CARBIDE BLACK - EBT2C0000"
- LEXAN DOORS FOR PANELBOARD AND INPUT CIRCUIT BREAKER

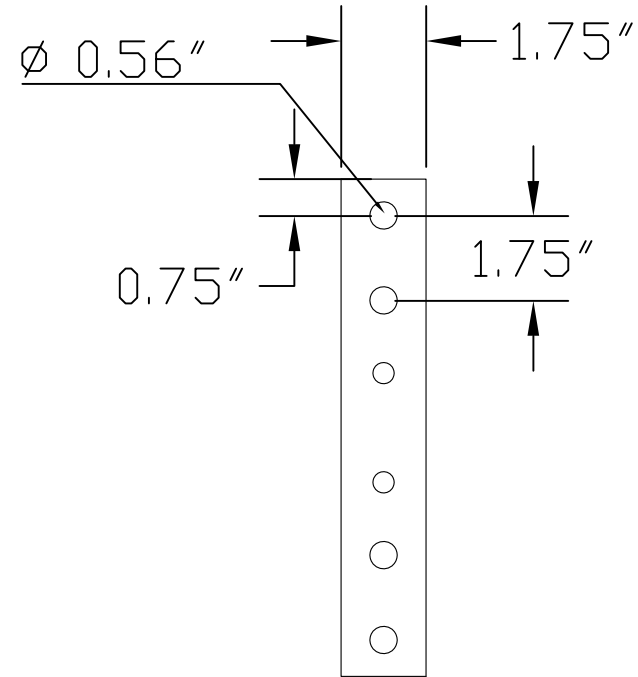
THIS DRAWING CONTAINS CONFIDENTIAL & PROPRIETARY INFORMATION AND SHALL NOT BE DISCLOSED OR COPIED WITHOUT THE EXPRESSED, WRITTEN PERMISSION OF POWER DISTRIBUTION, INC.



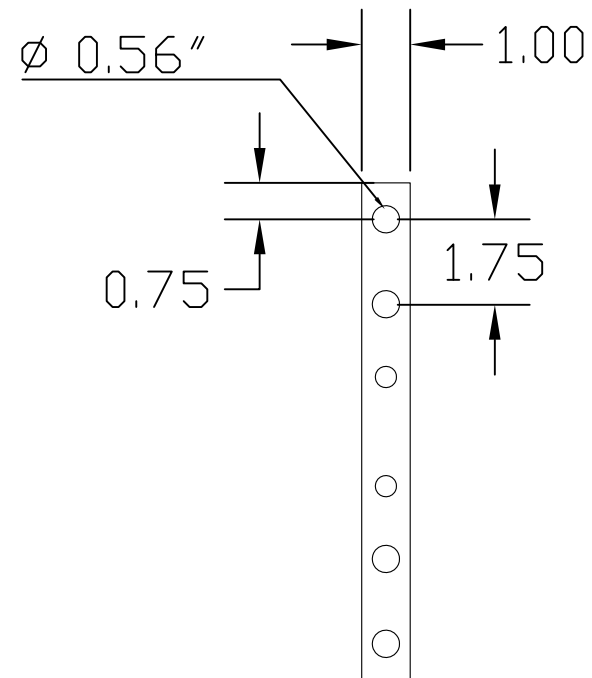
APPROVALS		DATE
DRAWN	RS/JS	3/21/16
DESIGNED	RS	3/21/16
CHECKED	LN	3/21/16
ENG. APPR.	VG	3/21/16
MFG. APPR.		

TITLE: PRODUCT REQUIREMENT FORM NQ CRPP 240VAC MAX		
SIZE B	DWG. NO. MCP20127	REV A
SCALE: NTS	SHEET 1 OF 5	

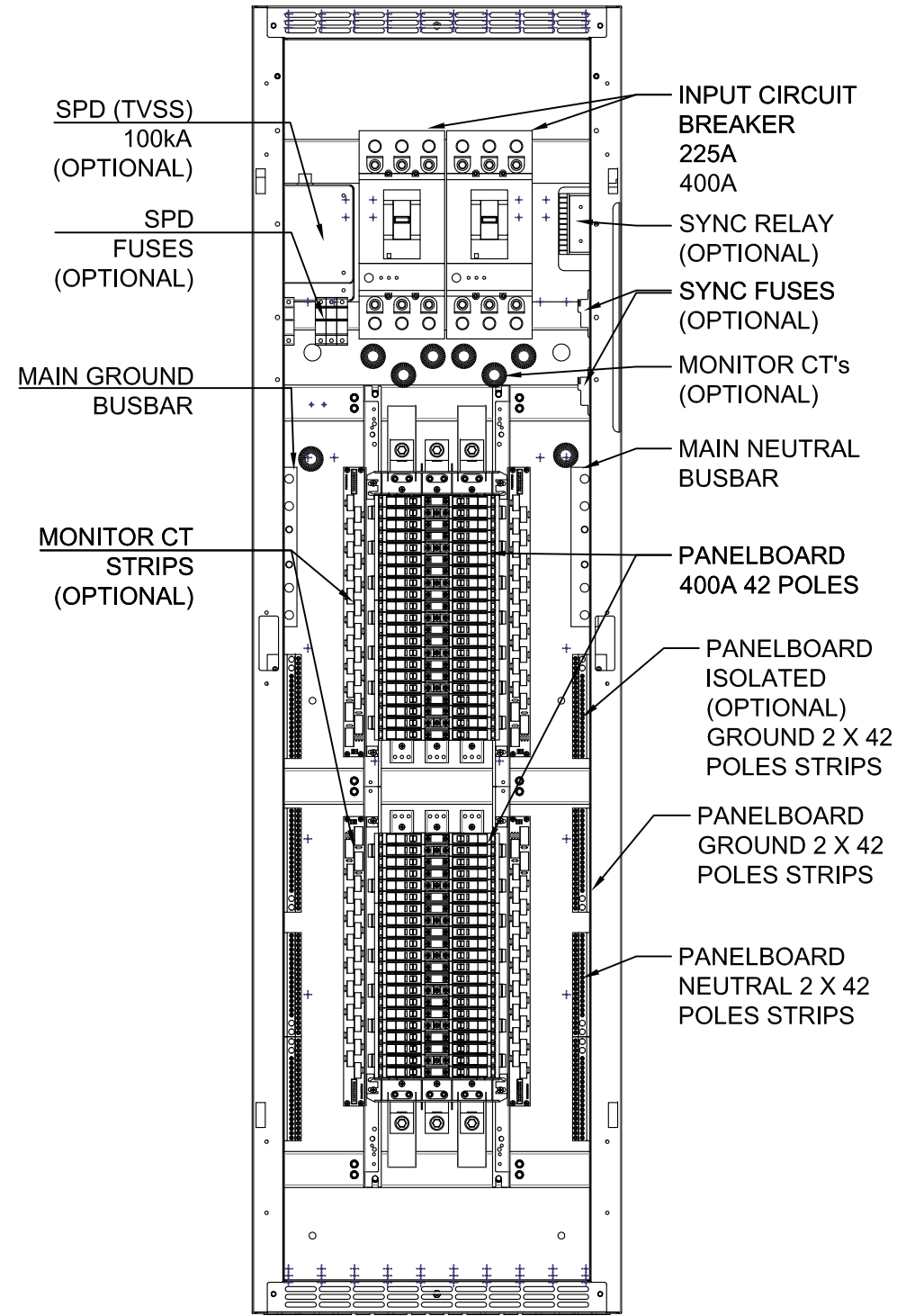
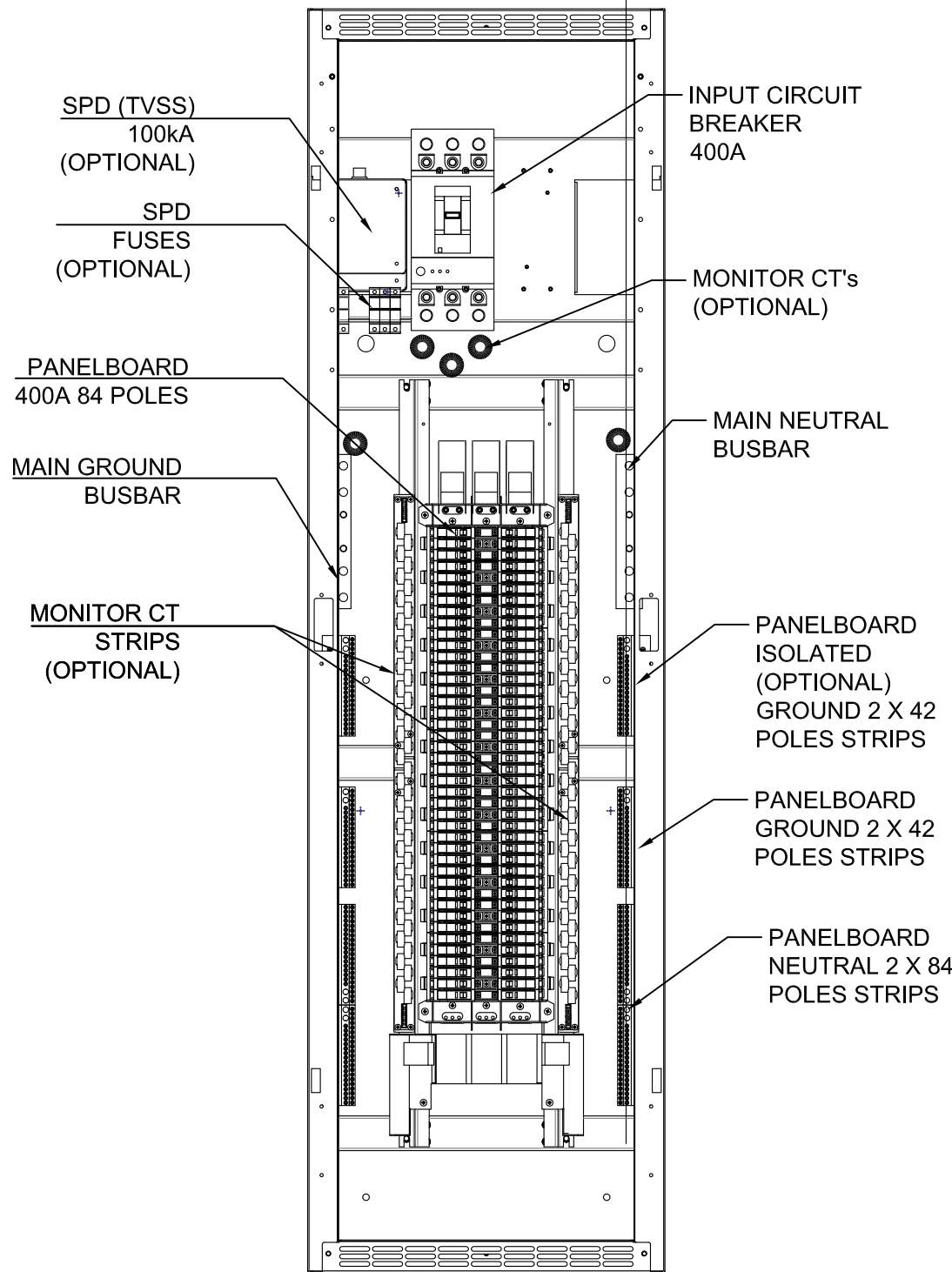
PRODUCT REQUIREMENT FORM



MAIN NEUTRAL
BUSBAR DETAIL



MAIN GROUND
BUSBAR DETAIL

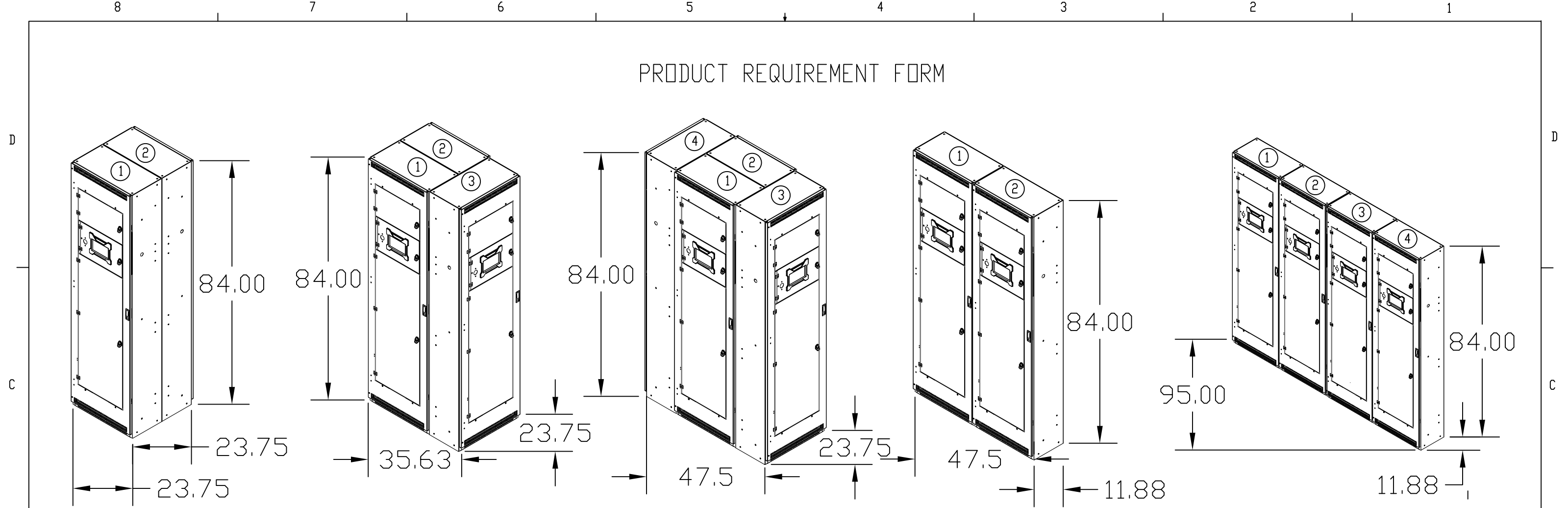


NOTES:

1. ALL CT'S ARE OPTIONAL FOR MAIN INPUT CIRCUIT BREAKER (S), NEUTRAL AND GROUND

SIZE B	DWG. NO. MCP20127	REV A
SCALE: NTS	SHEET 2 OF 5	

PRODUCT REQUIREMENT FORM



CONFIGURATION "1"

UNIT (1) CONFIGURATION:
 UNIT (2) CONFIGURATION:

CONFIGURATION "2"

UNIT (1) CONFIGURATION:
 UNIT (2) CONFIGURATION:
 UNIT (3) CONFIGURATION:

CONFIGURATION "3"

UNIT (1) CONFIGURATION:
 UNIT (2) CONFIGURATION:
 UNIT (3) CONFIGURATION:
 UNIT (4) CONFIGURATION:

CONFIGURATION "4"

UNIT (1) CONFIGURATION:
 UNIT (2) CONFIGURATION:

CONFIGURATION "5"

UNIT (1) CONFIGURATION:
 UNIT (2) CONFIGURATION:
 UNIT (3) CONFIGURATION:
 UNIT (4) CONFIGURATION:

* SEE SHEET (4) SINGLE LINE CONFIGURATION FOR EACH UNIT.

NOTES:

1. ALL DIMENSION ARE IN INCHES.
2. UNIT CAN BE FREE STANDING ONLY WHEN PROPERLY SECURED TO THE FLOOR OR BASE.
3. HARDWARE WILL BE INCLUDED FOR ALL CONFIGURATION.
4. UNIT WEIGHT: 300 LBS MAX.
5. THE UNITS WILL BE SHIP SEPARATELY.
6. ALL DIMENSION ABOVE ARE FOR MOUNTING SPACE.
7. MONITORING SYSTEM IS OPTIONAL.

NOTES:

SIZE B	DWG. NO. MCP20127	REV A
SCALE: NTS		SHEET 3 OF 5

PRODUCT REQUIREMENT FORM

SYSTEM "A"
 SINGLE INPUT
 One NQ panelboard 84 poles
 400A Max. Input

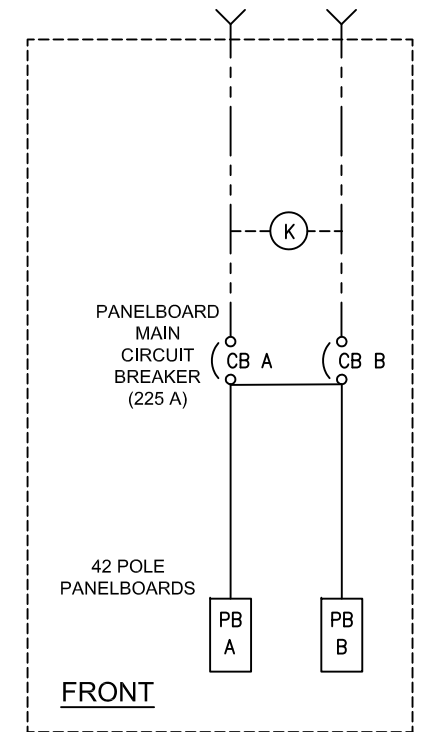
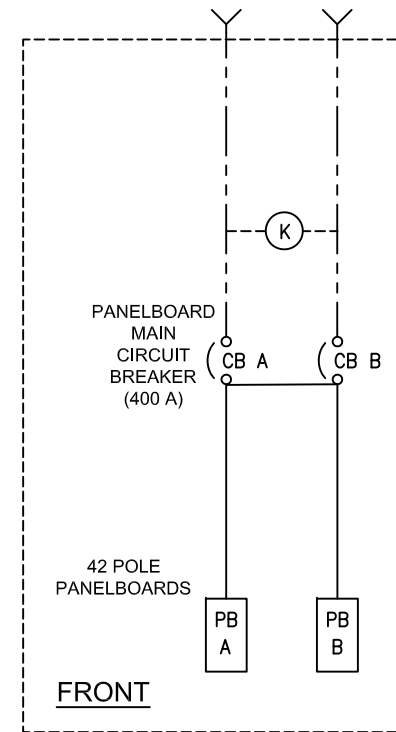
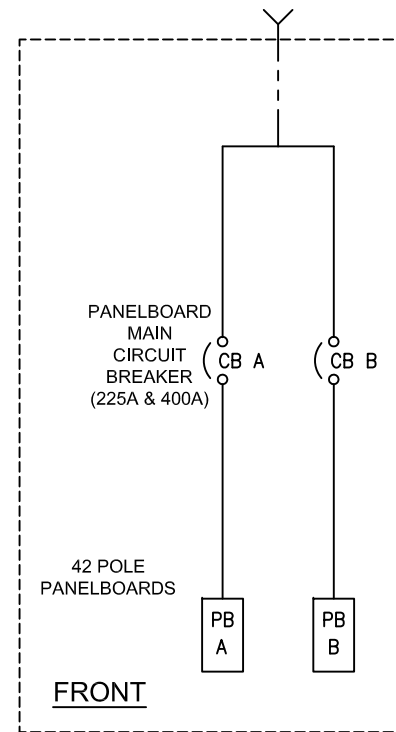
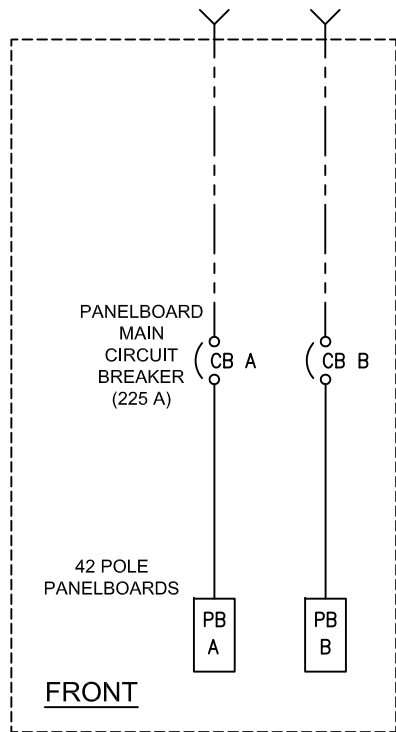
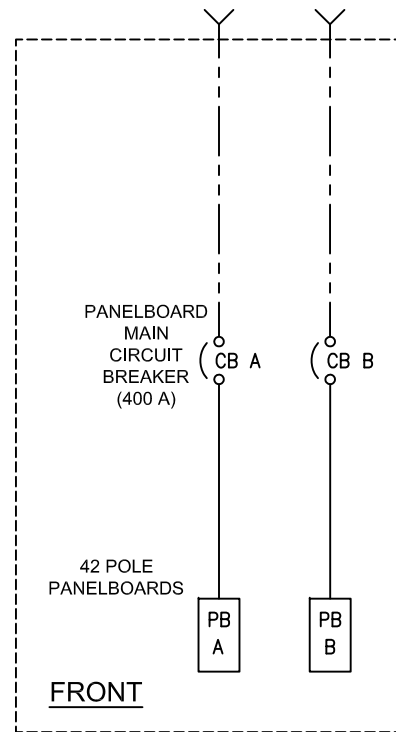
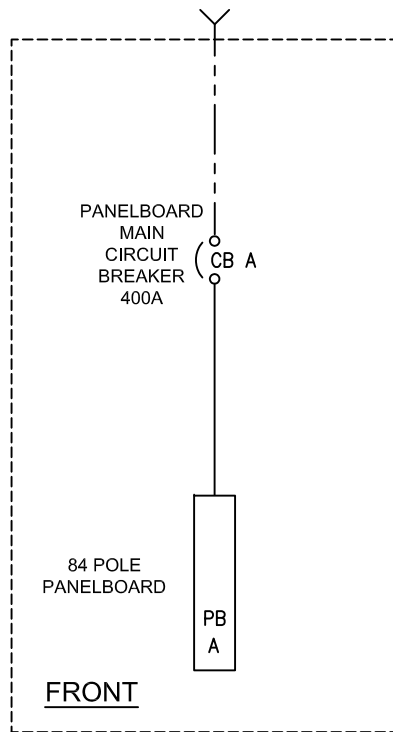
SYSTEM "B"
 DUAL INPUT
 Two NQ panelboards 42 poles
 400A Max. Input per feed

SYSTEM "C"
 DUAL INPUT
 Two NQ panelboards 42 poles
 225A Max. Input per feed

SYSTEM "D"
 SINGLE INPUT
 Two NQ panelboards 42 poles
 450A Max. Input
 * See note 4

SYSTEM "E"
 DUAL INPUT
 REDUNDANT RPP
 Two NQ panelboards 42 poles
 400A Max. Input per feed

SYSTEM "F"
 DUAL INPUT
 REDUNDANT RPP
 Two NQ panelboards 42 poles
 225A Max. Input per feed



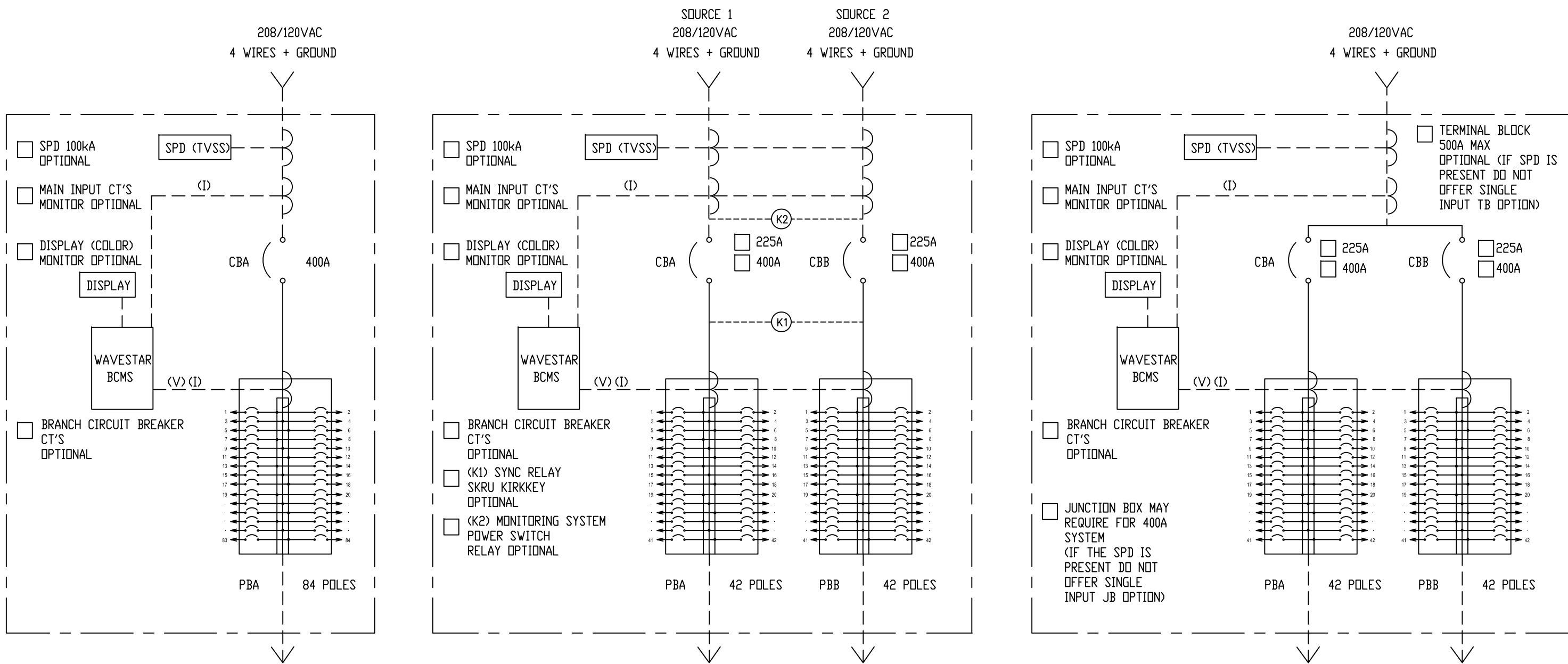
NOTES:

1. THE STANDARD CONFIGURATIONS ARE "A - D"
2. THE DUAL REDUNDANT W/KIRK KEYS AND SYNC RELAY CONFIGURATIONS ARE "E - F".
3. THE MONITORING SYSTEM IS OPTIONAL, SEE PAGE 5.
4. MAY REQUIRE EXTERNAL JUNCTION BOX FOR 400A.

SIZE B	DWG. NO. MCP20127	REV A
SCALE: NTS	SHEET 4 OF 5	

PRODUCT REQUIREMENT FORM

WAVESTAR MONITORING SYSTEM



SUBFEED CIRCUIT BREAKER SELECTION (208VAC)				
65kAIC 80% RATED (LI)	65kAIC 100% RATED (LI)	65kAIC 80% RATED (LSI)	65kAIC 100% RATED (LSI)	100kAIC 100% RATED (LSI)
LGL36250U31X <input type="checkbox"/>	LGL36250CU31X <input type="checkbox"/>	LGL36250U33X <input type="checkbox"/>	LGL36250CU33X <input type="checkbox"/>	LJL36250CU33X <input type="checkbox"/>
LGL36400U31X <input type="checkbox"/>	LGL36400CU31X <input type="checkbox"/>	LGL36400U33X <input type="checkbox"/>	LGL36400CU33X <input type="checkbox"/>	LJL36400CU33X <input type="checkbox"/>
LGL36600U31X <input type="checkbox"/>		LGL36600U33X <input type="checkbox"/>		

SUBFEED CIRCUIT BREAKER SELECTION (208VAC)				
65kAIC 80% RATED (LI)	65kAIC 100% RATED (LI)	65kAIC 80% RATED (LSI)	65kAIC 100% RATED (LSI)	100kAIC 100% RATED (LSI)
JGL36250U31X <input type="checkbox"/>	JGL36250CU31X <input type="checkbox"/>	JGL36250U33X <input type="checkbox"/>	JGL36250CU33X <input type="checkbox"/>	JJL36250CU33X <input type="checkbox"/>

NOTES:

1. 225A CIRCUIT BREAKER IS THERMAL-MAGNETIC, 80% RATED, 65KAIC @ 240VAC.
2. 400A CIRCUIT BREAKER IS ELECTRONIC TRIP, 80% RATED, 65KAIC @ 240VAC.
3. MONITORING SYSTEM IS OPTIONAL.

SIZE B	DWG. NO. MCP20127	REV A
SCALE: NTS		SHEET 5 OF 5