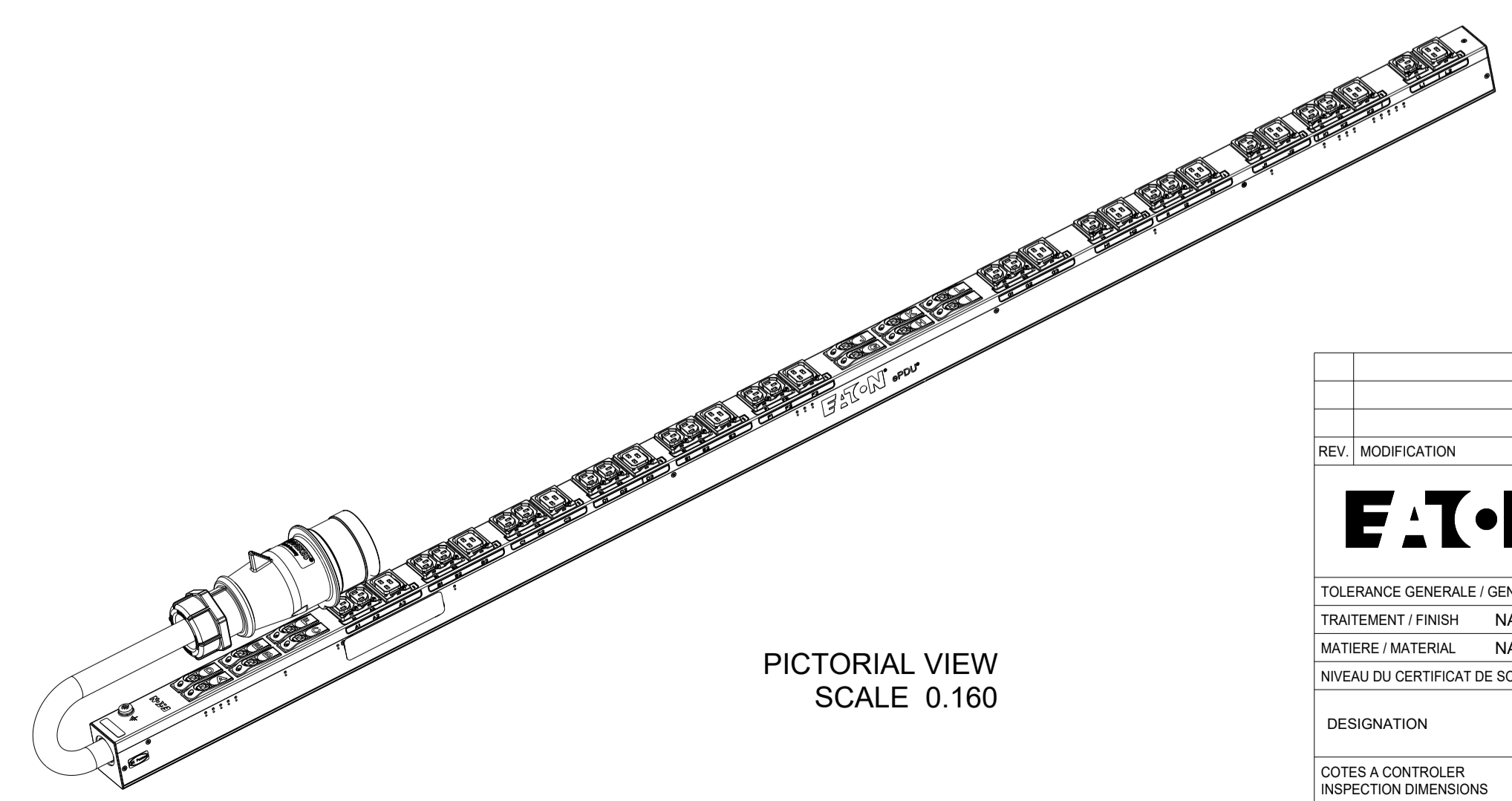


EBAB338		G3+ BASIC	
FUNCTIONALITY	INPUT	OUTPUT	ENVIRONMENTAL
CURRENT POWER AND ENERGY METERING FOR INPUT, BRANCH AND OUTLETS INDIVIDUAL OUTLET CONTROL	IEC 60309-2 63A 400V~ WYE, 3W+N+PE 16.0MM HO7 POWER CORD CABLE LENGTH: 3.0M	(21) IEC 60320 C13 GRIP/P-LOCK (12) IEC 60320 C19 GRIP/P-LOCK	0 TO 60° C
MECHANICAL	INPUT RATING	OUTPUT RATING	CERTIFICATIONS
LENGTH: 1829MM WIDTH: 52 MM DEPTH: 65MM ALUMINIUM CHASSIS, BLACK MNT PATTERN SK-23919-Y1	200-240/346-415V~ 3W+N+PE 50/60Hz 63A	200-240V~, 50/60Hz 10A PER C13; 16A PER C19 16A MAX PER SECTION 63A MAX PER PHASE	CE, CB
CIRCUIT BREAKERS	FILTER AND SPIKE/SURGE	ACCESSORIES	CONFIGURATION
(12) 16A 1-POLE	NONE	STANDARD KSP014 - VERT INSTALLATION PACK	EBA3DW8FBJ18BAM



REV.	MODIFICATION	DATE	DESS/DRAW	VERIF
		HEINEMANN PRODUCTS		VUE/VIEW 1ST ANGLE
		CH-1345 LE LIEU SWITZERLAND		ECHELLE / SCALE 4/10
TOLERANCE GENERALE / GENERAL TOLERANCE		DESIGNATION		N° MAG
TRAITEMENT / FINISH NA		EPDU BA 0U (309 63A 3P)21XC13:12XC19		EBAB338
MATIERE / MATERIAL NA		DESIGNATION		DESSINE LE / DRAWED THE 14.01.2022
NIVEAU DU CERTIFICAT DE SOUMISSION REQUIS / SAMPLES APPROVAL PROCESS REPORT X		DIMENSIONS AND TOLERANCES IN MILLIMETERS		PAR / BY YEW
DESIGNATION		EPDU BA 0U (309 63A 3P)21XC13:12XC19		VERIFIE PAR / VERIFIED BY ENOVIA
COTES A CONTROLER		COTES FONCTIONNELLES		NUMERO DU PLAN
INSPECTION DIMENSIONS		# XX.XX		PLAN NUMBER
				REV.