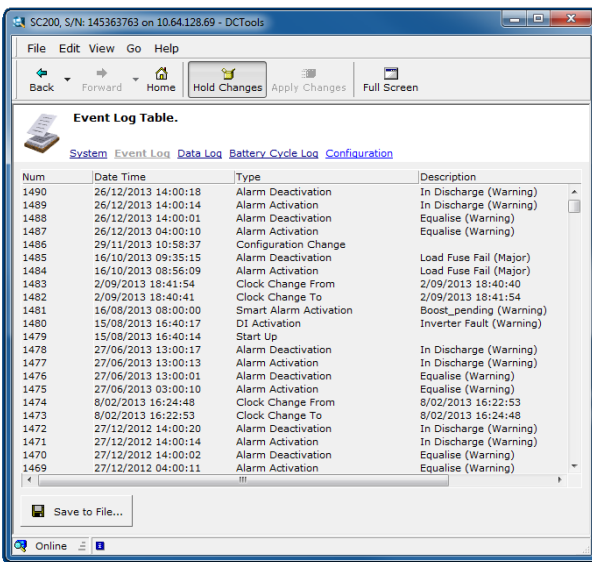
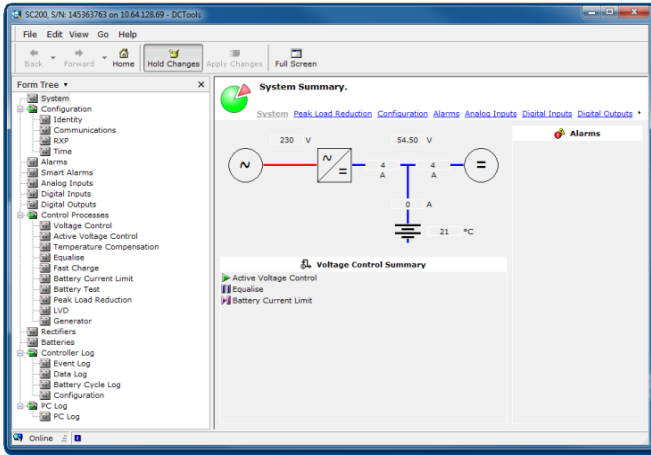


DCTools™ Configuration Software



Eaton® DCTools is configuration software for field technicians installing and maintaining Eaton DC power systems. It is supplied at no charge by download from the Internet and simplifies the setup and operation of all Eaton DC power systems.

Frontline staff will find DCTools is a major benefit during the installation, troubleshooting and support of any Eaton DC power system, CellSure battery monitoring systems and SiteSure ancillary monitoring and control systems.

For added flexibility DCTools can connect to an Eaton DC power system in several ways; directly through a USB connection to an SC200 Controller, Ethernet LAN/WAN, RS232 serial connection; or through a dialup or cellular modem.

DCTools is the ideal setup and diagnostic tool for field technicians. It provides a very easy way for them to configure an Eaton DC product, and view status and alarm conditions.

Among the advantages of using DCTools are reduced installation times, lower fault response times, less need to visit sites and better access to operating data for fault analysis and operating conditions such as load growth.

These make the processes of power system installation and operation more efficient with the potential for real operating cost savings.

DCTools is available for download at <http://dcpower.eaton.com/dc-products.asp>

Features

- DC power system configuration software
- Windows® compatible
- Easy to use graphical display
- Operates with all Eaton DC power systems, CellSure™ and SiteSure™
- Local (USB, RS232 serial) or remote (or Ethernet or dialup modem) connection
- Downloadable from the Internet at no charge

Technical Specifications

Computer

Minimum

Requirements

Operating System	Windows XP, Window 7, Windows 8, Windows 10 <i>Windows 8 and Windows 8 may require special installation procedure – refer Application Note AN0143.</i>
------------------	---

RAM	1GB
-----	-----

Internet connection	Required for download only
---------------------	----------------------------

Interfaces

Communications interfaces supported	Ethernet, USB, RS232, or modem
-------------------------------------	--------------------------------

Availability

Free download	http://dcpower.eaton.com/dc-products.asp
---------------	---

In the interests of continual product improvement all specifications are subject to change without notice.