



Powering Business Worldwide

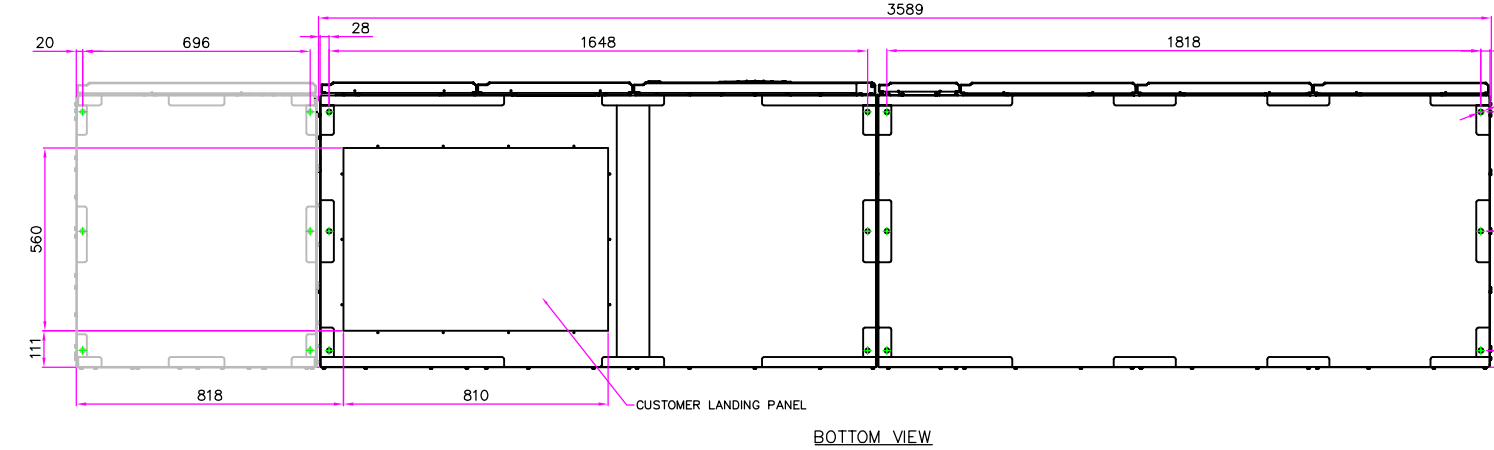
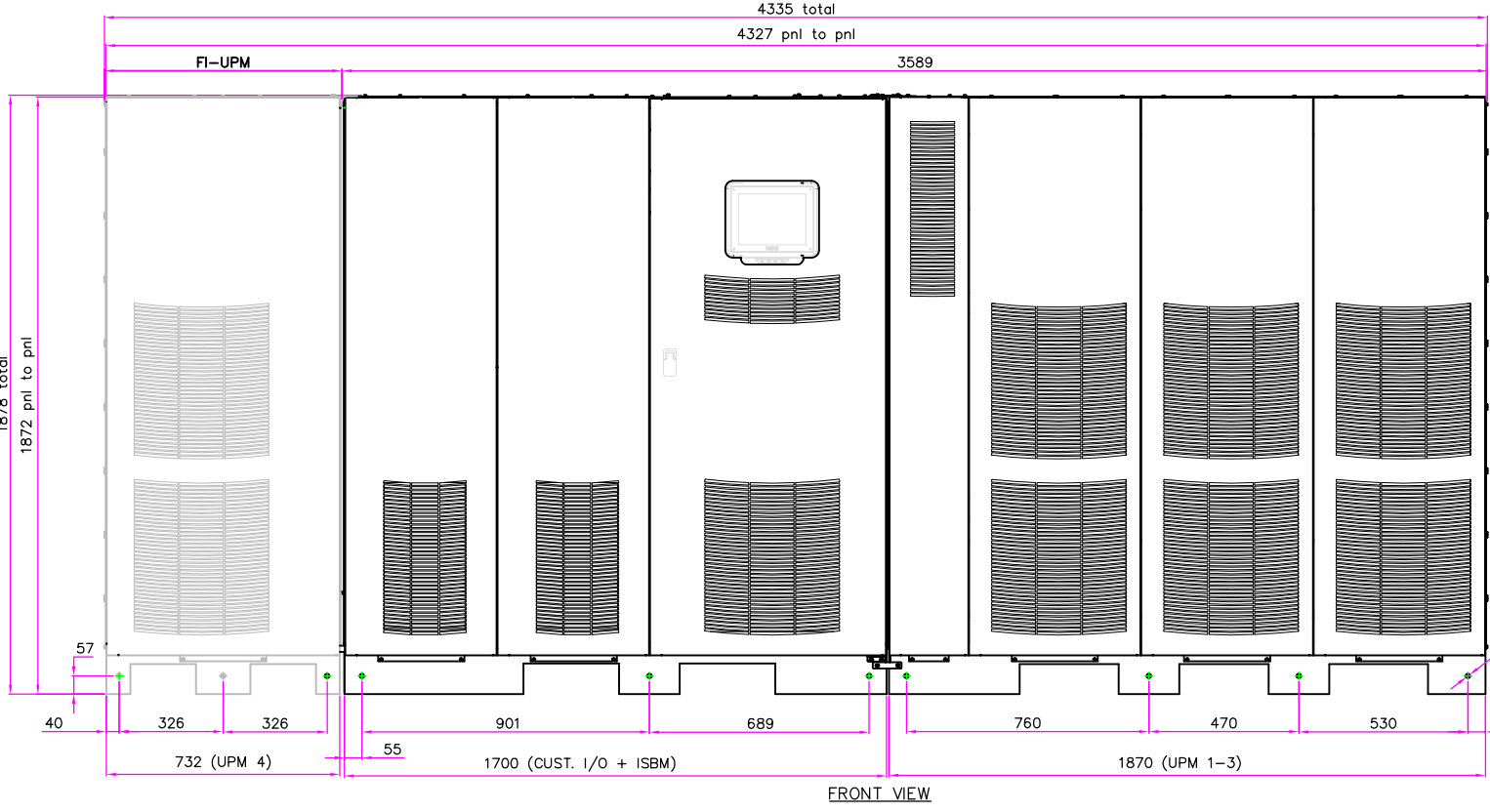
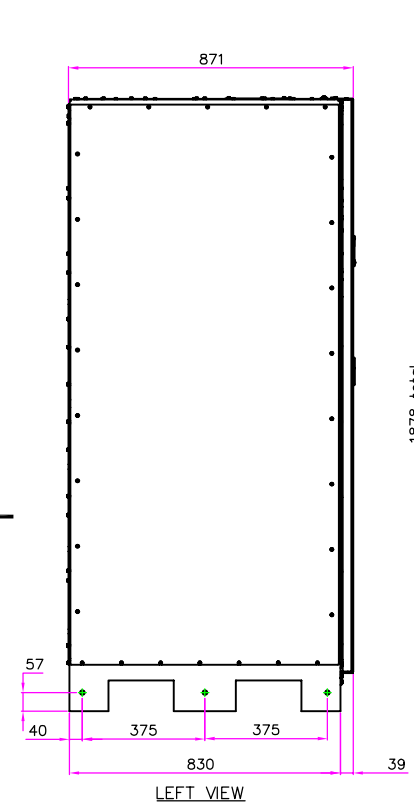
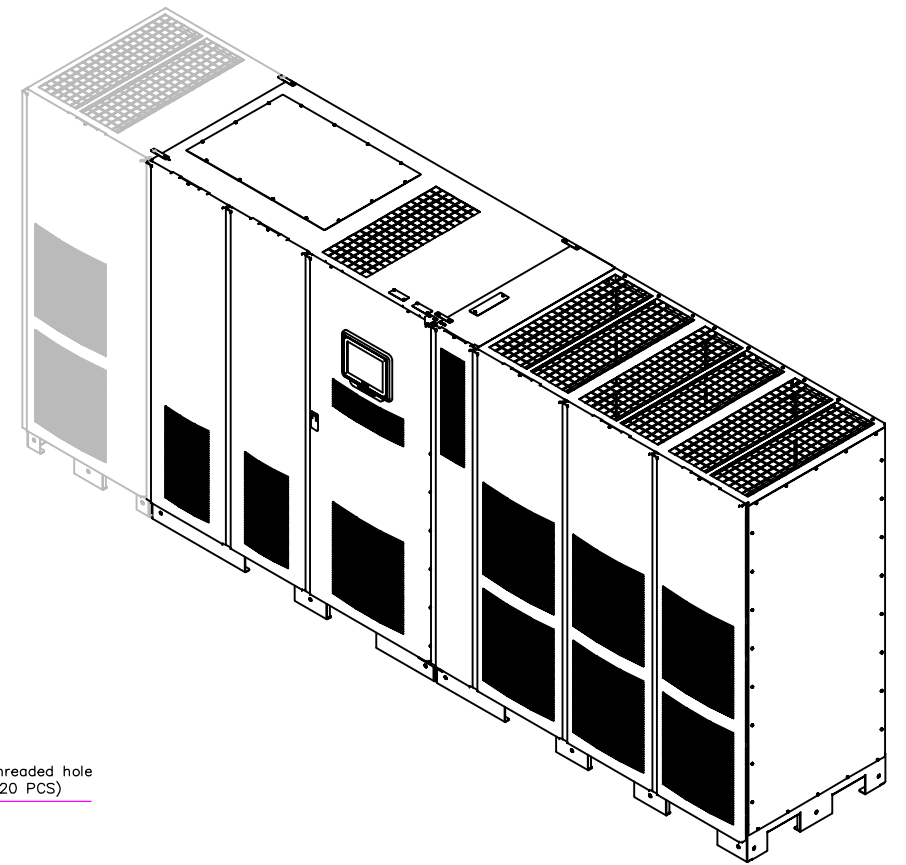
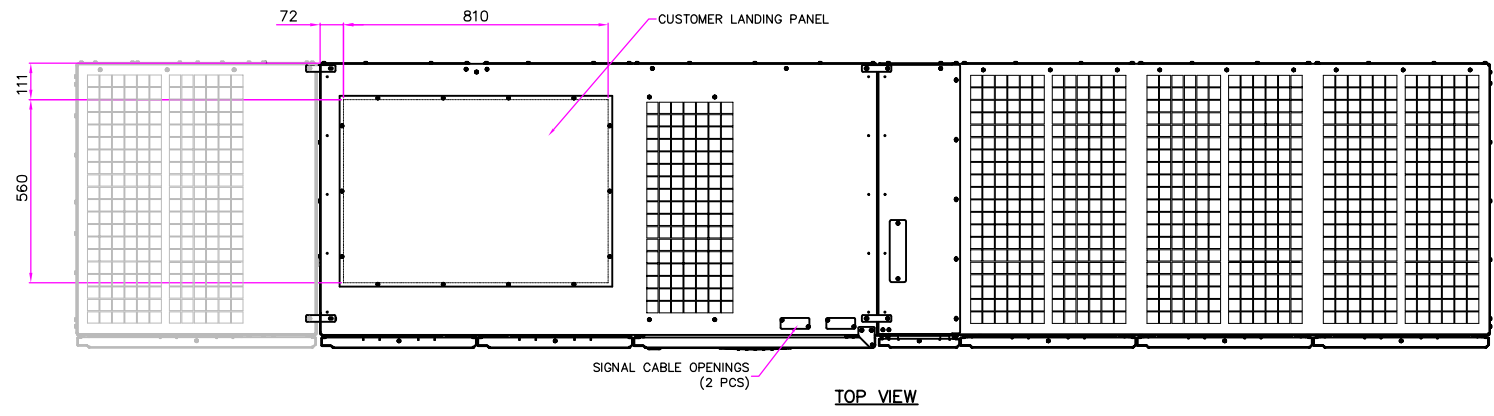


SITE PLANNING DATA 9395P 1200-900KVA

Page 1	Dimensional Drawings
Page 2	Customer Connections using Cu Bus Bars
Page 3	Customer Connections using Al Bus Bars
Page 4	Isometric View of Customer Connections
Page 5	Electrical Wiring of single unit
Page 6	Electrical & Signal Wiring of Parallel Units
Page 7	Product Specifications

METRIC		EATON CORPORATION	
DIMENSIONS ARE IN MILLIMETERS AFTER PLATING, DIMENSIONS AND TOLERANCES IN ACCORDANCE WITH ASME Y14.5M-1994. SEE NOTES FOR TOLERANCES.			
DESCRIPTION: 9395P 1200-900KVA Specifications			
ORIGINATED: ATIF RASHEED	27.04.2015	ECO:	NAME:
MODIFIED:		DOCUMENT TYPE:	P-110000423
CHECKED:		STATE:	RELEASED
SAFETY:		SHEET:	OF
APPROVED:			
EATON CORPORATION - CONFIDENTIAL AND PROPRIETARY NOTICE TO PERSONS RECEIVING THIS DOCUMENT AND/OR TECHNICAL INFORMATION THIS DOCUMENT, INCLUDING THE DRAWING AND INFORMATION CONTAINED THEREON, IS CONFIDENTIAL AND IS THE EXCLUSIVE PROPERTY OF EATON CORPORATION AND IS LOANED TO YOU BY EATON AT ANY TIME. BY YOUR POSSESSION OF THIS DOCUMENT, THE RECIPIENT ACKNOWLEDGES AND AGREES THAT THIS DOCUMENT CANNOT BE USED IN ANY MANNER HARMFUL TO THE INTERESTS OF EATON AND THAT NO PORTION OF THIS DOCUMENT MAY BE COPIED OR OTHERWISE REPRODUCED WITHOUT THE PRIOR WRITTEN CONSENT OF EATON. IN THE CASE OF CONFLICTING CONTRACTUAL PROVISIONS, THIS NOTICE SHALL GOVERN THE STATUS OF THIS DOCUMENT. © 2011 Eaton Corporation - All Rights Reserved.			

Product Specifications						
UPS Rating		Max Heat Dissipation at 100% Load	Dimensions ⁷ W X D X H	Approx. Weight ⁶ Unpacked	Floor Landing	Cooling Air
KVA	KW	KW	MM	Kg	Kg/m ²	L/S
900	825	38	3589X880X1880	2520	920	3260
1200	1100	50.6	4335X880X1880	3120	921	4160



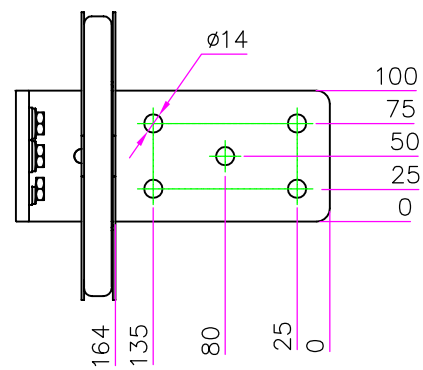
M12 threaded hole (20 PCS)

Ø14 (12 PCS)

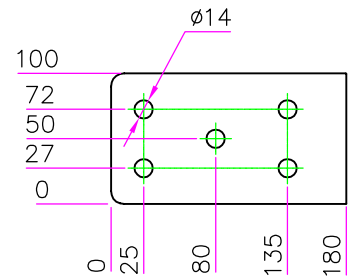
- Notes:
1. The system must be installed in a temperature and humidity controlled indoor area free of conductive contaminants.
 2. Continuous ambient temperature range: 0–40°C (32–104°F); Maximum relative humidity: 95% non-condensing.
 3. Minimum overhead clearance for ventilation above the UPS cabinet is 457mm (18in.).
 4. Minimum 915mm (36in.) clearance in front of the UPS cabinet is required for cooling air intake and servicing space.
 5. Top and bottom cable entries through removable access plates are standard for all configurations. Access plates shall be custom-modified to suit conduit sizes.
 6. When using copper bus bars add 100Kg to the total weight.
 7. For system installation an additional 130 mm in width is required.

METRIC		THIRD ANGLE PROJECTION		EATON CORPORATION			
DIMENSIONS ARE IN MILLIMETERS AFTER PLATING, DIMENSIONS AND TOLERANCES IN ACCORDANCE WITH ASME Y14.5M-1994. SEE NOTES FOR TOLERANCES.							
DESCRIPTION: 9395P 1200-900KVA Dimensional Drawings							
ORIGINATED: ATIF RASHEED	27.04.2015	ECO:	NAME:	REVISION: 001	SIZE: A2		
MODIFIED:				STATE: RELEASED	SCALE: 1:16		
CHECKED:		DOCUMENT TYPE:	P-110000423	SHEET: 1 OF 7			
SAFETY:		AUTOCAD DRAWING					
APPROVED:							

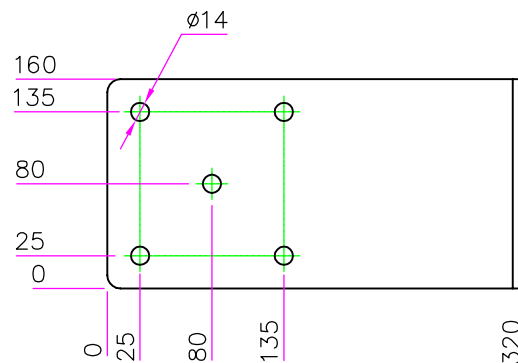
EATON CORPORATION - CONFIDENTIAL AND PROPRIETARY
NOTICE TO PERSONS RECEIVING THIS DOCUMENT AND/OR TECHNICAL INFORMATION
THIS DOCUMENT, INCLUDING THE DRAWING AND INFORMATION CONTAINED THEREIN, IS CONFIDENTIAL AND IS THE EXCLUSIVE PROPERTY OF EATON CORPORATION AND IS LOANED AND SUBJECT TO RECALL BY EATON AT ANY TIME.
BY TAKING POSSESSION OF THIS DOCUMENT, THE RECIPIENT ACKNOWLEDGES AND AGREES THAT THIS DOCUMENT CANNOT BE USED IN ANY MANNER CONTRARY TO THE INTERESTS OF EATON AND THAT NO PORTION OF THIS DOCUMENT MAY BE COPIED OR OTHERWISE REPRODUCED WITHOUT THE PRIOR WRITTEN CONSENT OF EATON. IN THE CASE OF CONFLICTING CONTRACTUAL PROVISIONS, THIS NOTICE SHALL GOVERN THE STATUS OF THIS DOCUMENT.
© 2011 Eaton Corporation - All Rights Reserved.



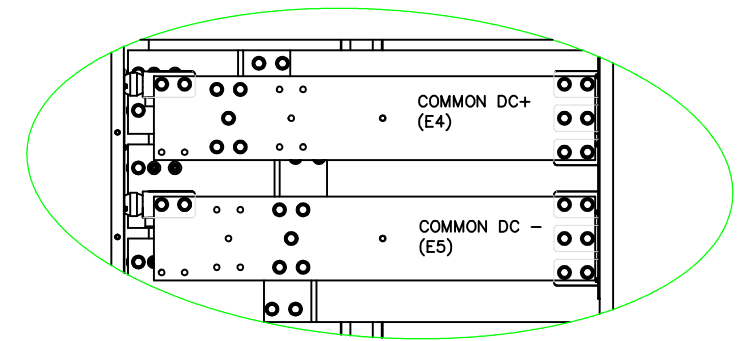
DETAIL A



DETAIL B

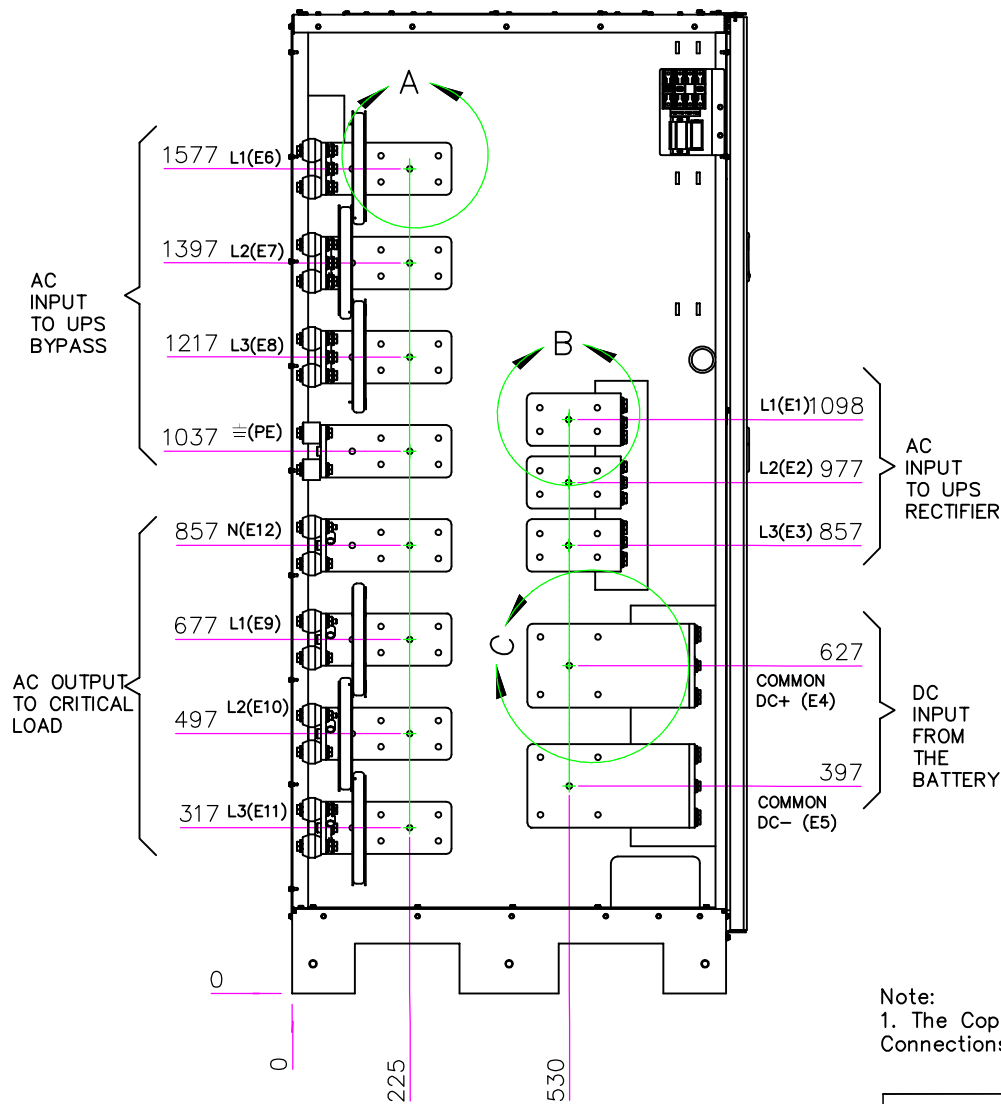
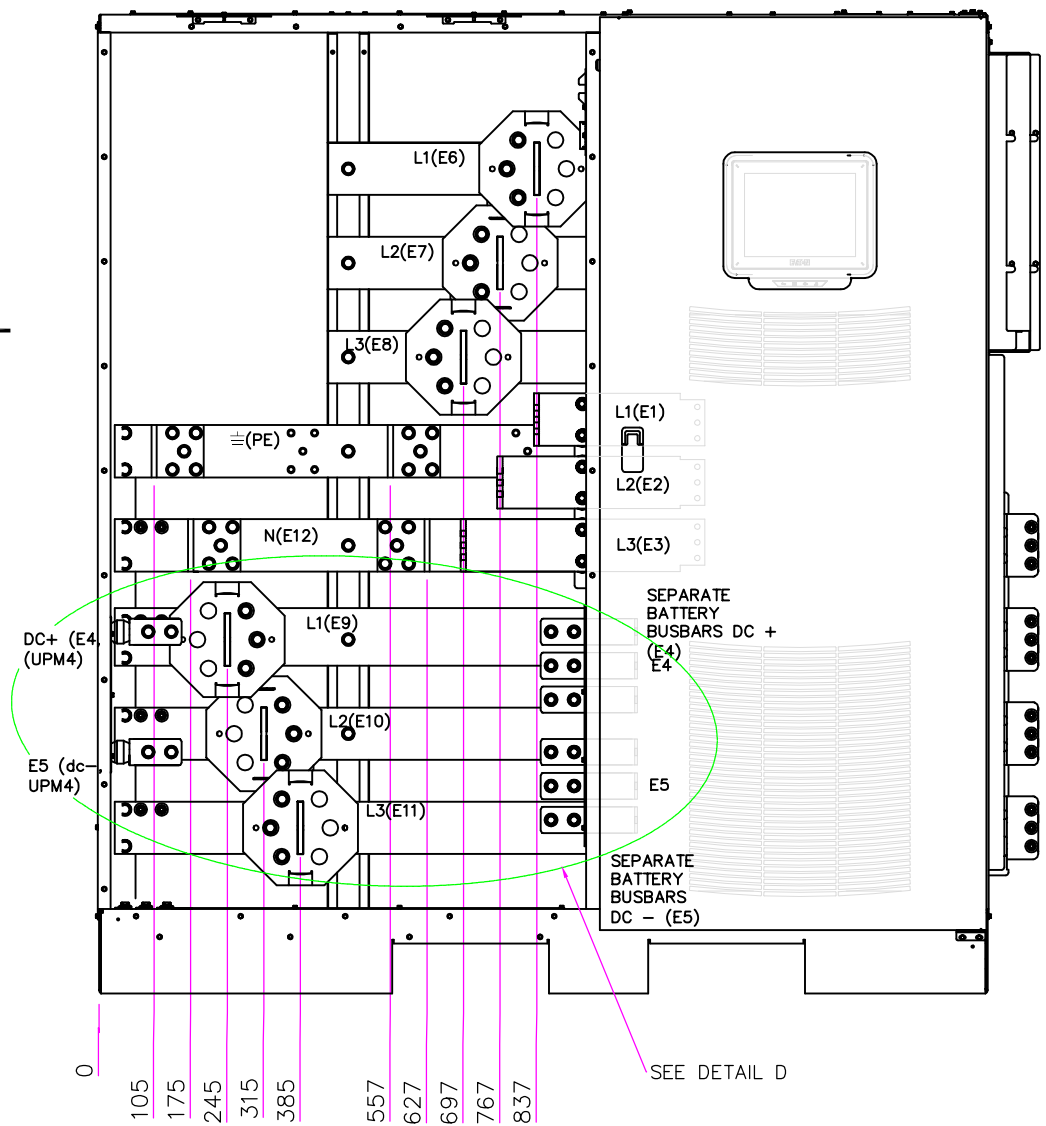


DETAIL C



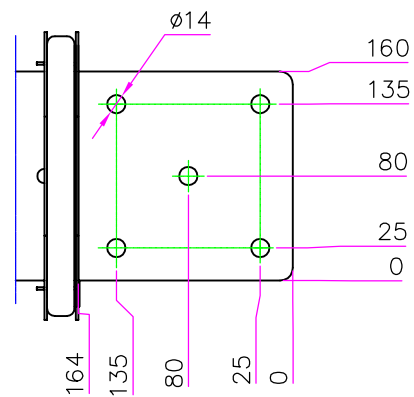
DETAIL D
COMMON BATTERY CONFIGURATION BUSBARS

COPPER BUSBARS

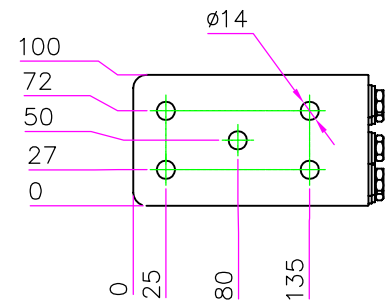


Note:
1. The Copper Bus Bars are Tin coated and suitable for both Al and Cu Connections.

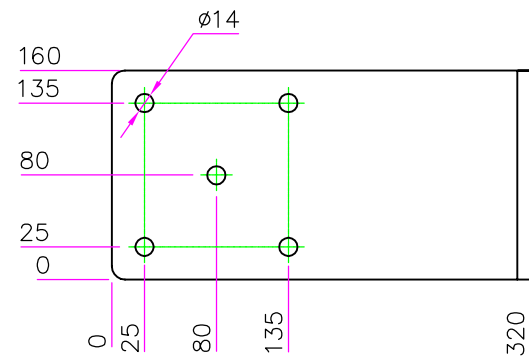
METRIC		THIRD ANGLE PROJECTION		EATON CORPORATION			
DIMENSIONS ARE IN MILLIMETERS AFTER PLATING, DIMENSIONS AND TOLERANCES IN ACCORDANCE WITH ASME Y14.5M-1994. SEE NOTES FOR TOLERANCES.							
DESCRIPTION: 9395P 1200-900KVA With Copper Bus Bars							
ORIGINATED: ATIF RASHEED	27.04.2015	ECO:	NAME:	REVISION: 001	SIZE: A2		
MODIFIED:				STATE: RELEASED	SCALE: 1:10		
CHECKED:		DOCUMENT TYPE:	P-110000423	SHEET: 2 OF 7			
SAFETY:		AUTOCAD DRAWING					
APPROVED:							
EATON CORPORATION - CONFIDENTIAL AND PROPRIETARY NOTICE TO PERSONS RECEIVING THIS DOCUMENT AND/OR TECHNICAL INFORMATION THIS DOCUMENT, INCLUDING THE DRAWING AND INFORMATION CONTAINED THEREIN, IS CONFIDENTIAL AND IS THE EXCLUSIVE PROPERTY OF EATON CORPORATION AND IS LOANED TO YOU BY EATON AT ANY TIME. NO PART OF THIS DOCUMENT, INCLUDING THE DRAWING AND INFORMATION CONTAINED THEREIN, IS TO BE REPRODUCED OR TRANSMITTED IN ANY FORM OR BY ANY MEANS, ELECTRONIC OR MECHANICAL, INCLUDING PHOTOCOPYING, RECORDING, OR BY ANY INFORMATION STORAGE AND RETRIEVAL SYSTEM, WITHOUT THE PRIOR WRITTEN CONSENT OF EATON. IN THE CASE OF CONFLICTING CONTRACTUAL PROVISIONS, THIS NOTICE SHALL GOVERN THE STATUS OF THIS DOCUMENT. © 2011 Eaton Corporation - All Rights Reserved.							



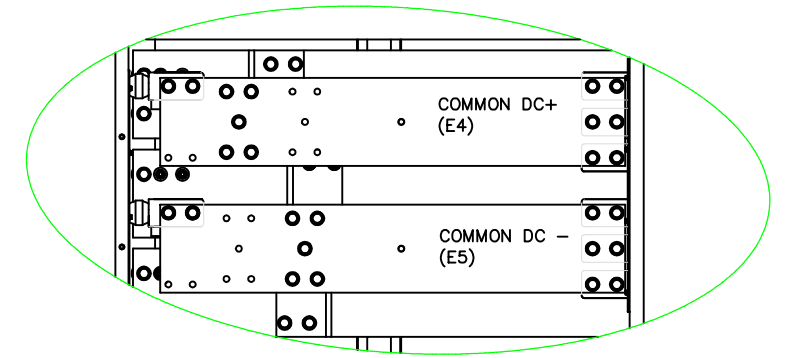
DETAIL A



DETAIL B

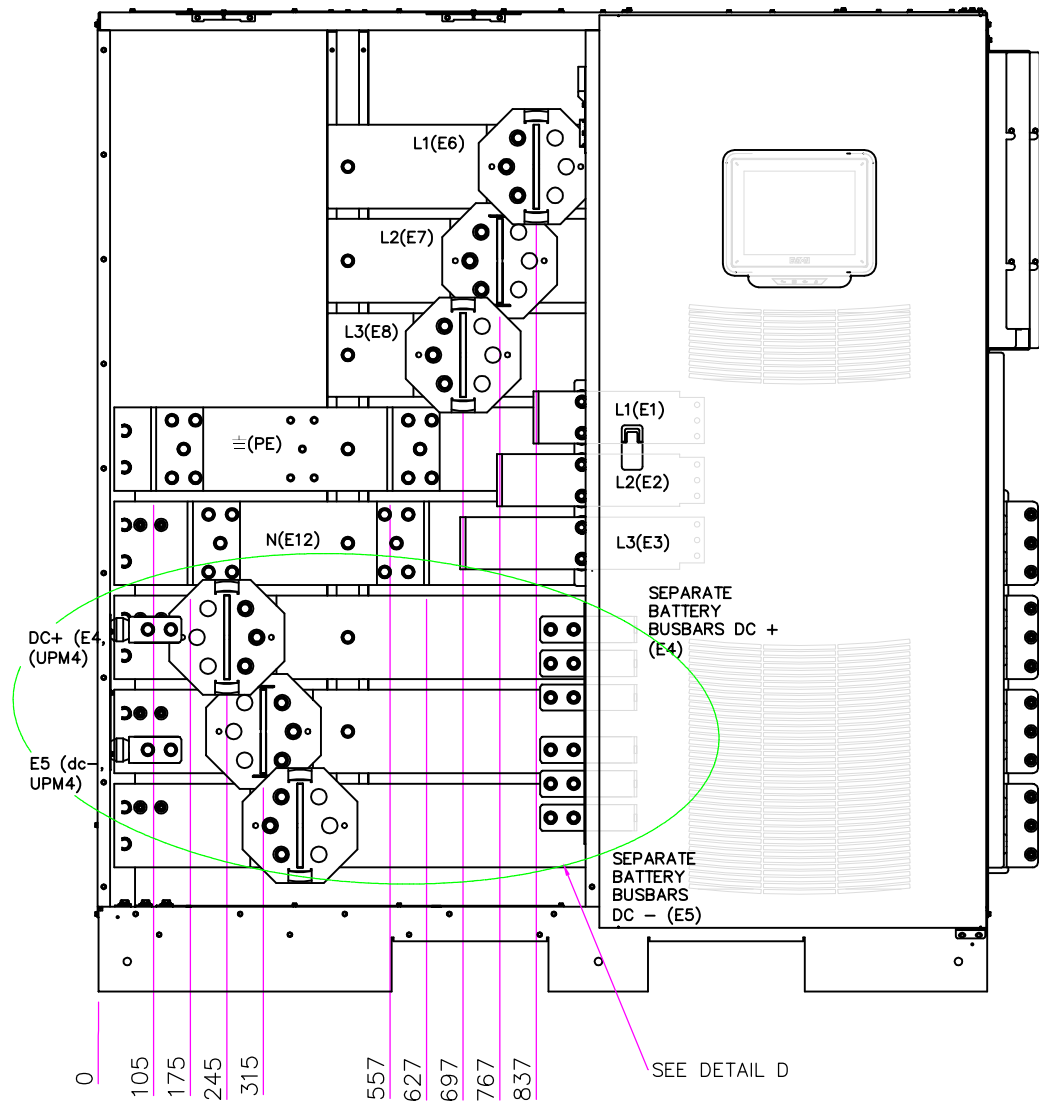


DETAIL C

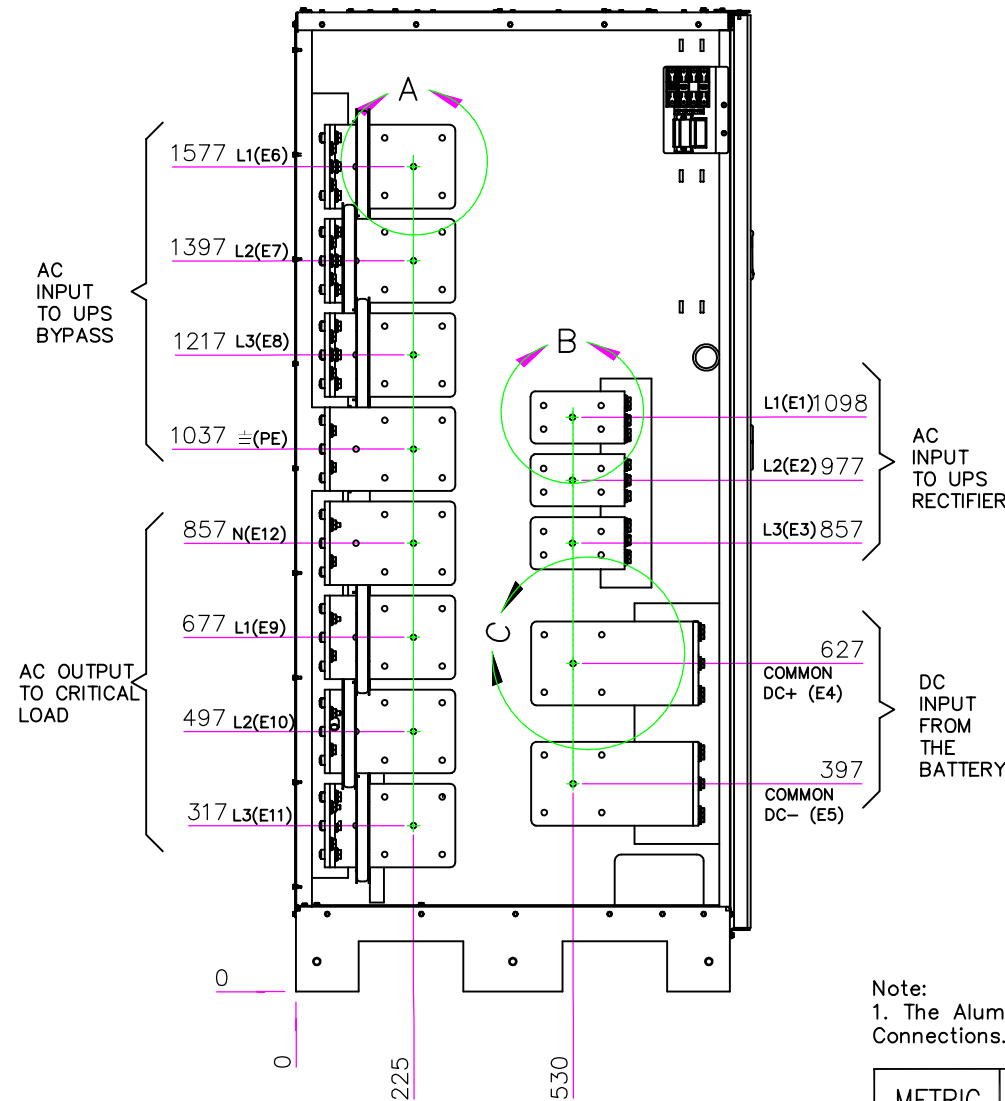


DETAIL D
COMMON BATTERY CONFIGURATION BUSBARS

ALUMINIUM BUSBARS



ISBM CABINET FRONT VIEW

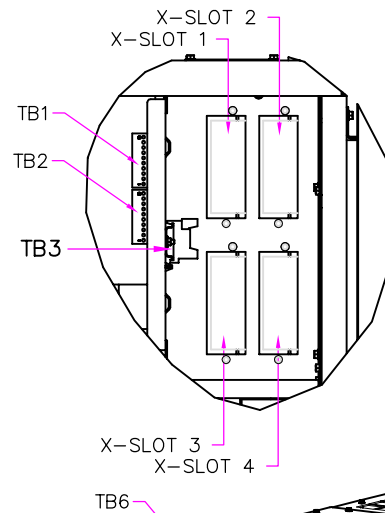


ISBM CABINET LEFT VIEW

Note:
1. The Aluminum Bus Bars are Tin coated are suitable for both Al and Cu Connections.

METRIC		EATON CORPORATION		EATON	
DIMENSIONS ARE IN MILLIMETERS AFTER PLATING, DIMENSIONS AND TOLERANCES IN ACCORDANCE WITH ASME Y14.5M-1994. SEE NOTES FOR TOLERANCES.					
DESCRIPTION: 9395P 1200-900KVA With Aluminium Bus Bars					
ORIGINATED: ATIF RASHEED	27.04.2015	ECO:	NAME:	REVISION: 001	SIZE: A2
MODIFIED:				STATE:	SCALE: 1:10
CHECKED:		DOCUMENT TYPE:	P-110000423	RELEASED	SHEET: 3 OF 7
SAFETY:					
APPROVED:					
EATON CORPORATION - CONFIDENTIAL AND PROPRIETARY NOTICE TO PERSONS RECEIVING THIS DOCUMENT AND/OR TECHNICAL INFORMATION THIS DOCUMENT, INCLUDING THE DRAWING AND INFORMATION CONTAINED THEREIN, IS CONFIDENTIAL AND IS THE EXCLUSIVE PROPERTY OF EATON CORPORATION, AND IS LOANED TO YOU AND SUBJECT TO RETURN BY YOU AT ANY TIME. BY YOUR POSSESSION OF THIS DOCUMENT, YOU HEREBY ACKNOWLEDGE AND AGREE THAT THIS DOCUMENT CANNOT BE USED IN ANY MANNER CONTRARY TO THE INTERESTS OF EATON AND THAT NO PORTION OF THIS DOCUMENT MAY BE COPIED OR OTHERWISE REPRODUCED WITHOUT THE PRIOR WRITTEN CONSENT OF EATON. IN THE CASE OF CONFLICTING CONTRACTUAL PROVISIONS, THIS NOTICE SHALL GOVERN THE STATUS OF THIS DOCUMENT. © 2011 Eaton Corporation - All Rights Reserved.					

BEHIND COVERS



- TB1
- 1 REMOTE EPO NC
 - 2 REMOTE EPO NO RTN
 - 3 REMOTE EPO NO
 - 4 REMOTE EPO NO RTN
 - 5 BATT AUX
 - 6 BATT AUX RTN
 - 7 BATT SHUNT +
 - 8 BATT SHUNT -
 - 9 K3 NC AUX
 - 10 K3 NC AUX

- TB2
- 1 PULL CHAIN
 - 2 PULL CHAIN RTN
 - 3 ALRM RELAY NC
 - 4 ALRM RELAY RTN
 - 5 ALRM RELAY NO
 - 6 ALRM RELAY RTN

- TB3
- 1 BLDG ALARM 1
 - 2 BLDG ALARM 1 RTN
 - 3 BLDG ALARM 2
 - 4 BLDG ALARM 2 RTN
 - 5 BLDG ALARM 3
 - 6 BLDG ALARM 3 RTN
 - 7 BLDG ALARM 4
 - 8 BLDG ALARM 4 RTN
 - 9 BLDG ALARM 5
 - 10 BLDG ALARM 5 RTN

- TB6
- 1 BYP ϕ L1
 - 2 BYP ϕ L2
 - 3 BYP ϕ L3
 - 4 BYP N
 - 5 OUT ϕ L1
 - 6 OUT ϕ L2
 - 7 OUT ϕ L3
 - 8 SYNC ϕ L1
 - 9 SYNC ϕ L2
 - 10 SYNC ϕ L3

AC INPUT
L1(E1)
L2(E2)
L3(E3)

BYPASS INPUT
L1(E6)
L2(E7)
L3(E8)

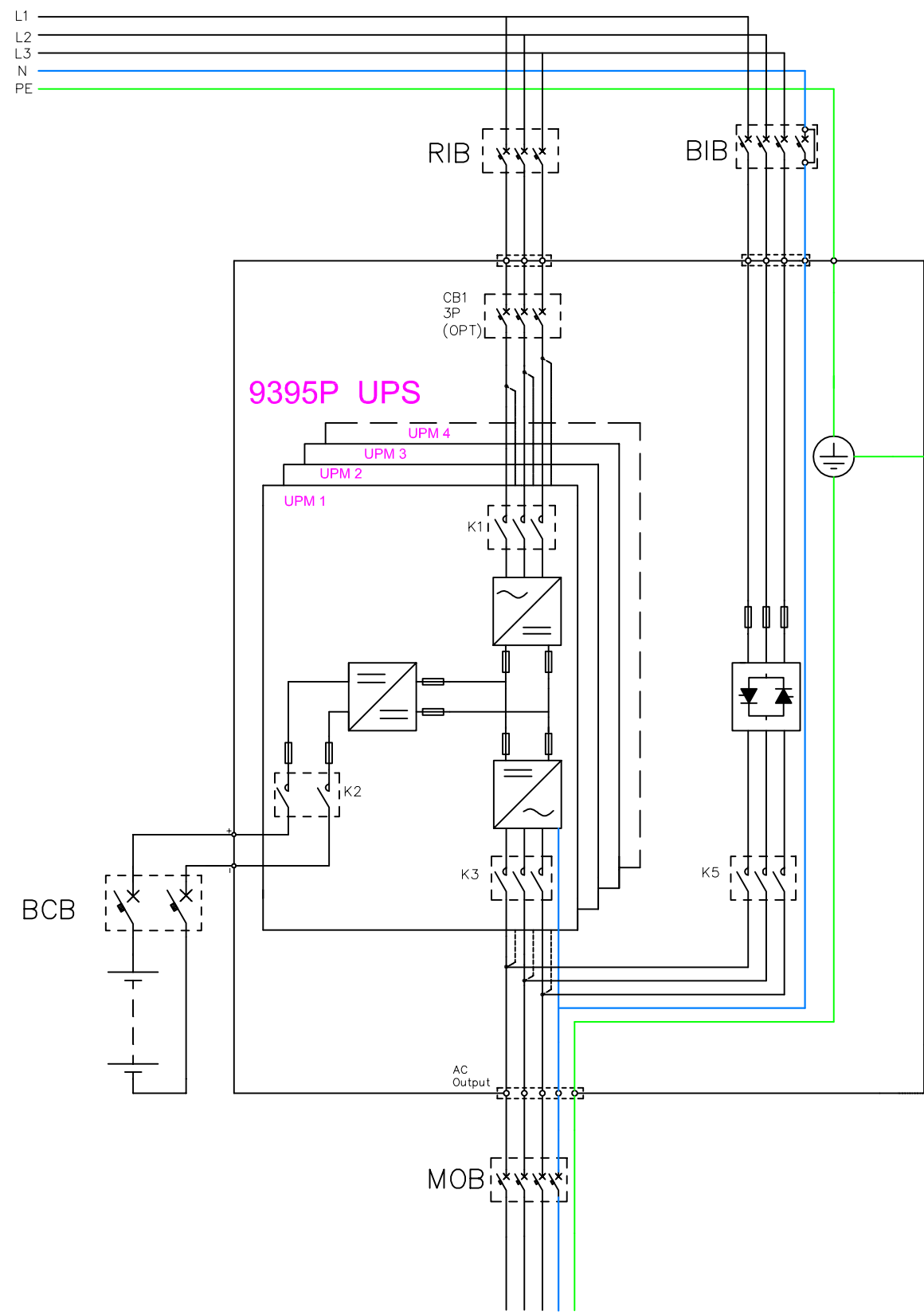
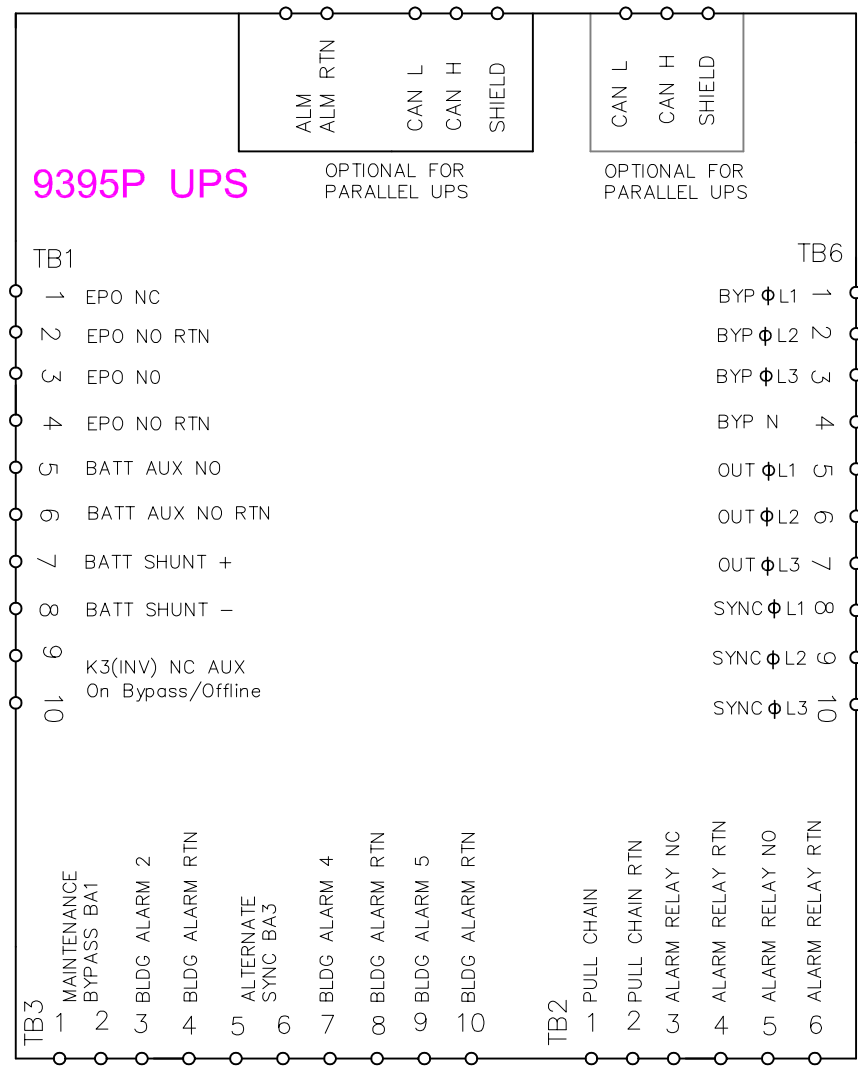
GROUND

UPS OUTPUT
N(E12)
L1(E9)
L2(E10)
L3(E11)

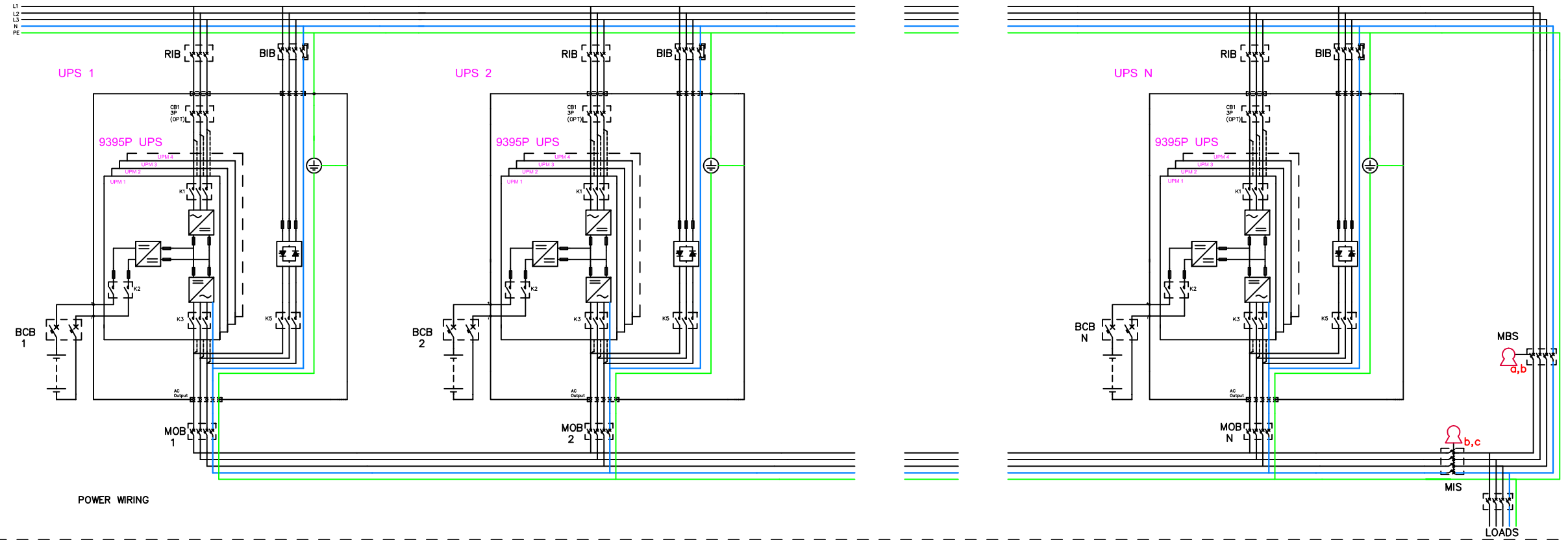
BATTERY CONNECTIONS

+(E4)
-(E5)

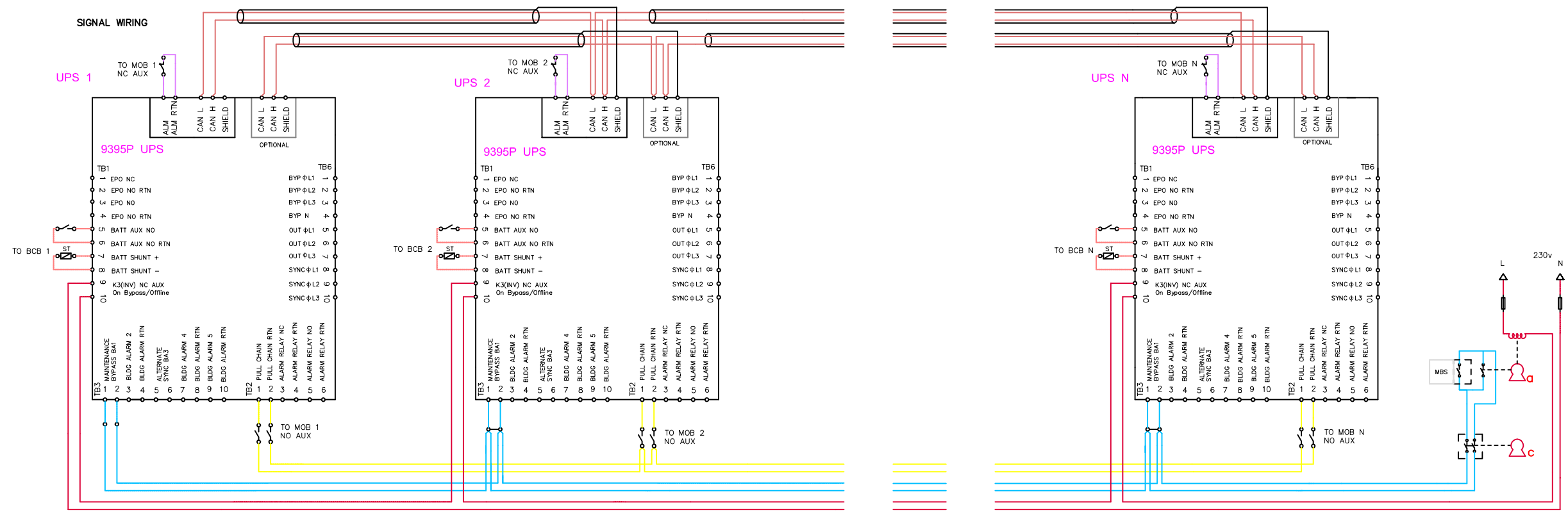
METRIC		THIRD ANGLE PROJECTION		EATON CORPORATION			
DIMENSIONS ARE IN MILLIMETERS AFTER PLATING, DIMENSIONS AND TOLERANCES IN ACCORDANCE WITH ASME Y14.5M-1994. SEE NOTES FOR TOLERANCES.							
DESCRIPTION: 9395P 1200-900KVA Customer Connections Isometric							
ORIGINATED: ATIF RASHEED	27.04.2015	ECO:	NAME:	REVISION: 001	SCALE: 1:20	SIZE: A2	
CHECKED:		DOCUMENT TYPE:	P-110000423	STATE: RELEASED	SHEET: 4 OF 7		
SAFETY:							
APPROVED:							
<small>EATON CORPORATION - CONFIDENTIAL AND PROPRIETARY NOTICE TO PERSONS RECEIVING THIS DOCUMENT AND/OR TECHNICAL INFORMATION THIS DOCUMENT, INCLUDING THE DRAWING AND INFORMATION CONTAINED THEREIN, IS CONFIDENTIAL AND IS THE EXCLUSIVE PROPERTY OF EATON CORPORATION, AND IS MERELY ON LOAN AND SUBJECT TO RECALL BY EATON AT ANY TIME. NO PART OF THIS DOCUMENT, THE HEREIN ACCUMULATED AND AGREES THAT THIS DOCUMENT CANNOT BE USED IN ANY MANNER HARMFUL TO THE INTERESTS OF EATON AND THAT NO PORTION OF THIS DOCUMENT MAY BE COPIED OR OTHERWISE REPRODUCED WITHOUT THE PRIOR WRITTEN CONSENT OF EATON. IN THE CASE OF CONFLICTING CONTRACTS, PROVISIONS, THIS NOTICE SHALL GOVERN THE STATUS OF THIS DOCUMENT. © 2011 Eaton Corporation - All Rights Reserved.</small>							



METRIC		EATON CORPORATION		EATON	
DIMENSIONS ARE IN MILLIMETERS AFTER PLATING, DIMENSIONS AND TOLERANCES IN ACCORDANCE WITH ASME Y14.5M-1994. SEE NOTES FOR TOLERANCES.					
DESCRIPTION: 9395P 1200-900KVA Electrical Wiring					
ORIGINATED: ATIF RASHEED	27.04.2015	ECO:	NAME:	REVISION: 001	SIZE: A2
MODIFIED:				STATE: RELEASED	SCALE: 1:20
CHECKED:		DOCUMENT TYPE:	P-110000423		SHEET: 5 OF 7
SAFETY:					
APPROVED:					
<small>EATON CORPORATION - CONFIDENTIAL AND PROPRIETARY NOTICE TO PERSONS RECEIVING THIS DOCUMENT AND/OR TECHNICAL INFORMATION THIS DOCUMENT, INCLUDING THE DRAWING AND INFORMATION CONTAINED THEREIN, IS CONFIDENTIAL AND IS THE EXCLUSIVE PROPERTY OF EATON CORPORATION AND IS LOANED TO YOU AND SUBJECT TO RECALL BY EATON AT ANY TIME. BY YOUR POSSESSION OF THIS DOCUMENT, THE RECIPIENT ACKNOWLEDGES AND AGREES THAT THIS DOCUMENT CANNOT BE USED IN ANY MANNER HARMFUL TO THE INTERESTS OF EATON AND THAT NO PORTION OF THIS DOCUMENT MAY BE COPIED OR OTHERWISE REPRODUCED WITHOUT THE PRIOR WRITTEN CONSENT OF EATON. IN THE CASE OF CONFLICTING CONTRACTUAL PROVISIONS, THIS NOTICE SHALL GOVERN THE STATUS OF THIS DOCUMENT. © 2011 Eaton Corporation - All Rights Reserved.</small>					



POWER WIRING



SIGNAL WIRING

- MBS STATUS (Provided by others, Installed by others)
0.75 - 2.5mm² twisted pair (if possible, else shielded)
No earth needed
- PULL CHAIN (REDUNDANT ON BYP STATUS)
Provided by Eaton, Installed by Eaton
- MOB STATUS (Provided by others, Installed by others)
0.75 - 2.5mm² twisted pair (if possible, else shielded)
No earth needed
- ON BYPASS STATUS (NO INVERTORS ONLINE)
Provided by others, Installed by others
1.5 - 2.5mm² , 600v
- PCAN (DUAL AS OPTION)
Provided by Eaton, Installed by Eaton

- Mechanical bypass Interlocking sequence
1. Place UPS system to bypass. On bypass status (K3) will energize Key A solenoid to release it
 2. Removing key A will switch on "force bypass" to the UPS system
 3. Place key A to MBS breaker and close breaker. Key B will be released.
 4. Aux contact of MBS will keep "force bypass" on UPS system
 5. Place key B to MBS breaker and open MIS to isolate UPS system from load. Key C will be released
 6. Place key C to It's dedicated keyhole to release "force bypass" command to allow UPS system testing

METRIC	THIRD ANGLE PROJECTION	EATON CORPORATION		EATON
DIMENSIONS ARE IN MILLIMETERS AFTER PLATING, DIMENSIONS AND TOLERANCES IN ACCORDANCE WITH ASME Y14.5M-1994. SEE NOTES FOR TOLERANCES.				
DESCRIPTION: 9395P 1200-900KVA Wiring Parallel Units				
ORIGINATED: ATIF RASHEED	27.04.2015	ECO:	NAME:	REVISION: 001
MODIFIED:		DOCUMENT TYPE:	P-110000423	SCALE: 1:1
CHECKED:		AUTOCAD DRAWING		STATE: RELEASED
APPROVED:				SHEET: 6 OF 7
EATON CORPORATION - CONFIDENTIAL AND PROPRIETARY NOTICE TO PERSONS RECEIVING THIS DOCUMENT AND/OR TECHNICAL INFORMATION THIS DOCUMENT, INCLUDING THE DRAWING AND INFORMATION CONTAINED THEREIN, IS CONFIDENTIAL AND IS THE EXCLUSIVE PROPERTY OF EATON CORPORATION AND IS LOANED AND SUBJECT TO RECALL BY EATON AT ANY TIME. BY THEIR POSSESSION OF THIS DOCUMENT, THE RECIPIENT ACKNOWLEDGES AND AGREES THAT THIS DOCUMENT CANNOT BE USED IN ANY MANNER HARMFUL TO THE INTERESTS OF EATON AND THAT NO PORTION OF THIS DOCUMENT MAY BE COPIED OR OTHERWISE REPRODUCED WITHOUT THE PRIOR WRITTEN CONSENT OF EATON. IN THE CASE OF CONFLICTING CONTRACTUAL PROVISIONS, THIS NOTICE SHALL GOVERN THE STATUS OF THIS DOCUMENT. © 2011 Eaton Corporation - All Rights Reserved.				

9395 P 1200-900 KVA UPS Site Planning Data

Product Specifications																		
UPS Rating		AC Input		3P Rectifier Input Breaker (RIB)		3P+Bolted N Bypass Input Breaker (BIB)			4P Inverter AC output Breaker MOB			Battery Breaker (BCB) (Ratings at the end of discharge, 1.67VPC)				For Parallel Units Common Maintenance Bypass Switch (MBS)		
				Nominal Current	Maximum Current	Nominal Current at 400v Input	Maximum current at 10% under voltage	Integrated Bypass Fuse	Output Current	Inverter Short Circuit Current	Auxiliary Switches	Rating	Separate Battery Configuration (UPM Bttery)	Common Battery Configuration (UPS Battery)	Trip Device (Shunt Trip)	Auxiliary Switches	Rating	Auxiliary Switches
KVA	KW	v	A	A	A	A	Type	v	A	A	Qty	VDC	A	A	VDC	Qty	A	Qty
900	825	400	1260	1500	1733	1907	170M7084 3000A	400	1305	2280	2	600	733	2198	48	1	1305 x N	1
1200	1100	400	1665	2000	1733	1907	170M7084 3000A	400	1733	3040	2	600	733	2920	48	1	1733 x N	1

Notes:

1. Rectifier AC input current calculations: Nominal – 100% load without charging; Maximum – 100% load with maximum charging (Rectifier current limit).
2. Inverter AC output current calculation: At 100% rated output load.
3. The system must be installed on a level floor suitable for computer or electronic equipment.
4. All wiring and installations must be in accordance with applicable National and Local Electric Regulations.
5. AC input to UPS: (3) phases, (1) neutral, (1) ground.
AC output to load: (3) phases, (1) neutral, (1) ground.
DC input from battery to UPS: (1) positive, (1) negative, (1) ground.
6. All breakers should be adjusted according to the specified Ampere values to protect the UPS and installation.
7. For UPS installations that utilizes single feed input, The input breaker should be configured according to the rated rectifier input current..
8. Specifications are subject to change.

METRIC	THIRD ANGLE PROJECTION	EATON CORPORATION	
DIMENSIONS ARE IN MILLIMETERS AFTER PLATING, DIMENSIONS AND TOLERANCES IN ACCORDANCE WITH ASME Y14.5M-1994. SEE NOTES FOR TOLERANCES.			
DESCRIPTION: 9395P 1200-900KVA Specifications			
ORIGINATED: ATIF RASHEED	27.04.2015	ECO:	NAME:
MODIFIED:		DOCUMENT TYPE:	P-110000423
CHECKED:		SAFETY:	RELEASED
APPROVED:		REVISION:	001
		STATE:	7 OF 7
EATON CORPORATION - CONFIDENTIAL AND PROPRIETARY NOTICE TO PERSONS RECEIVING THIS DOCUMENT AND/OR TECHNICAL INFORMATION THIS DOCUMENT, INCLUDING THE DRAWING AND INFORMATION CONTAINED THEREON, IS CONFIDENTIAL AND IS THE EXCLUSIVE PROPERTY OF EATON CORPORATION AND IS LOANED AND SUBJECT TO RECALL BY EATON AT ANY TIME. BY TAKING POSSESSION OF THIS DOCUMENT, THE RECIPIENT ACKNOWLEDGES AND AGREES THAT THIS DOCUMENT CANNOT BE USED IN ANY MANNER UNLESS TO THE INTERESTS OF EATON AND THAT NO PORTION OF THIS DOCUMENT MAY BE COPIED OR OTHERWISE REPRODUCED WITHOUT THE PRIOR WRITTEN CONSENT OF EATON. IN THE CASE OF CONFLICTING CONTRACTUAL PROVISIONS, THIS NOTICE SHALL GOVERN THE STATUS OF THIS DOCUMENT. © 2011 Eaton Corporation - All Rights Reserved.			