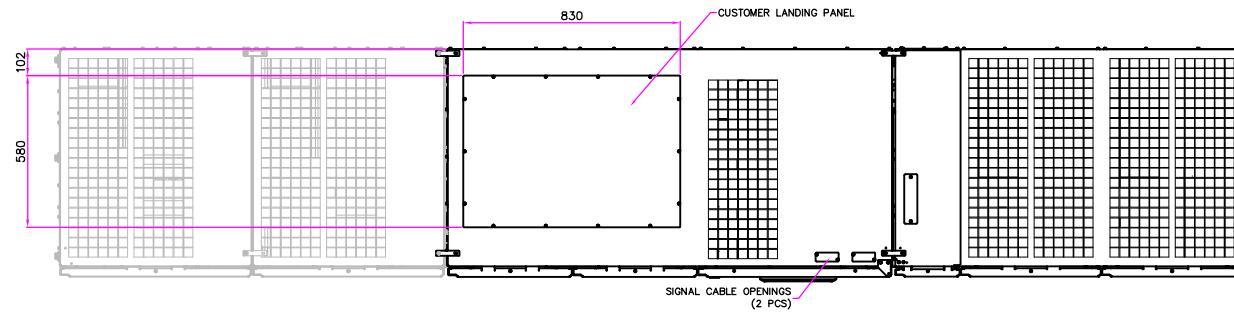




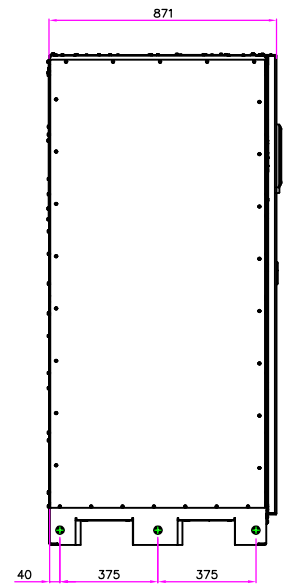
SITE PLANNING DATA 9395P 1200-600KVA

Page 1	Dimensional Drawings
Page 2	Customer Connections using Cu Bus Bars
Page 3	Customer Connections using Al Bus Bars
Page 4	Isometric View of Customer Connections
Page 5	Electrical Wiring of single unit
Page 6	Electrical & Signal Wiring of Parallel Units
Page 7	Product Specifications

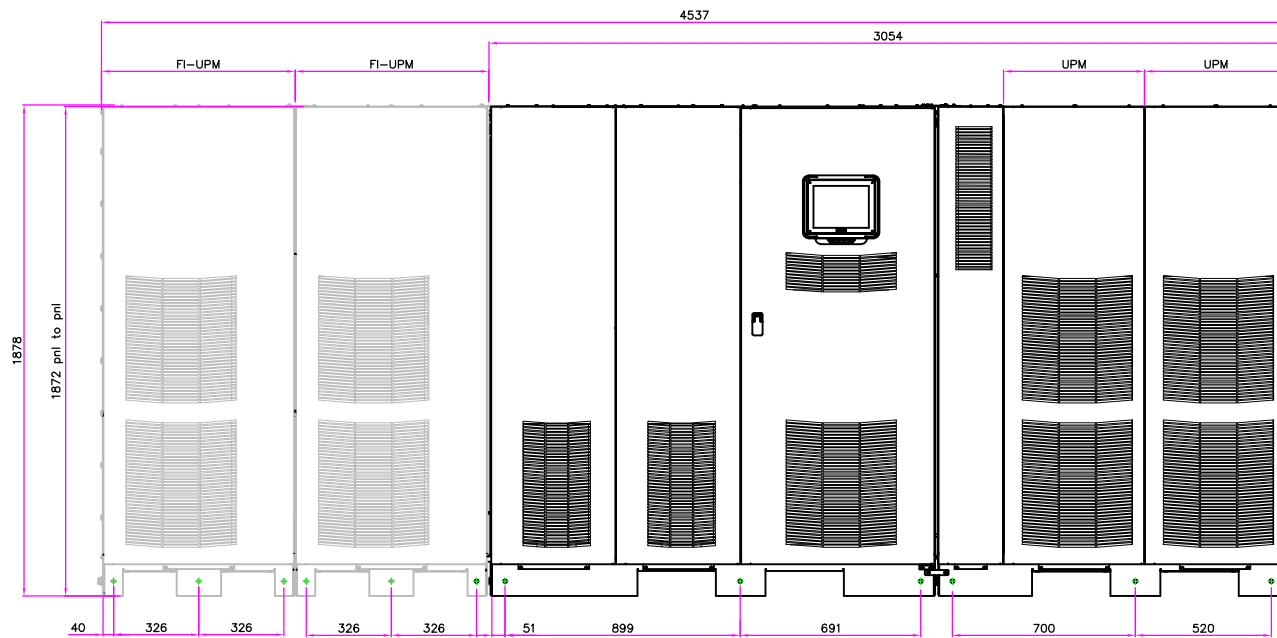
METRIC		THIRD ANGLE PROJECTION		EATON CORPORATION			
DIMENSIONS ARE IN MILLIMETERS AFTER PLATING, DIMENSIONS AND TOLERANCES IN ACCORDANCE WITH ASME Y14.5M-1994. SEE NOTES FOR TOLERANCES.							
DESCRIPTION: 9395P 1200-600KVA							
ORIGINATED: ATIF RASHEED	27.04.2015	ECO:	NAME:	REVISION: 001	SIZE: A2		
CHECKED:		DOCUMENT TYPE:	P-110000422	STATE: RELEASED	SCALE: 1:1		
SAFETY:		APPROVED:			SHEET: OF		
<small>EATON CORPORATION - CONFIDENTIAL AND PROPRIETARY NOTICE TO PERSONS RECEIVING THIS DOCUMENT AND/OR TECHNICAL INFORMATION THIS DOCUMENT, INCLUDING THE DRAWING AND INFORMATION CONTAINED THEREIN, IS CONFIDENTIAL AND IS THE EXCLUSIVE PROPERTY OF EATON CORPORATION AND IS LOANED TO YOU BY EATON AT ANY TIME. BY YOUR POSSESSION OF THIS DOCUMENT, THE RECEIVER ACKNOWLEDGES AND AGREES THAT THIS DOCUMENT CANNOT BE USED IN ANY MANNER HARMFUL TO THE INTERESTS OF EATON AND THAT NO PORTION OF THIS DOCUMENT MAY BE COPIED OR OTHERWISE REPRODUCED WITHOUT THE PRIOR WRITTEN CONSENT OF EATON. IN THE CASE OF CONFLICTING CONTRACTUAL PROVISIONS, THIS NOTICE SHALL GOVERN THE STATUS OF THIS DOCUMENT. © 2011 Eaton Corporation - All Rights Reserved.</small>							



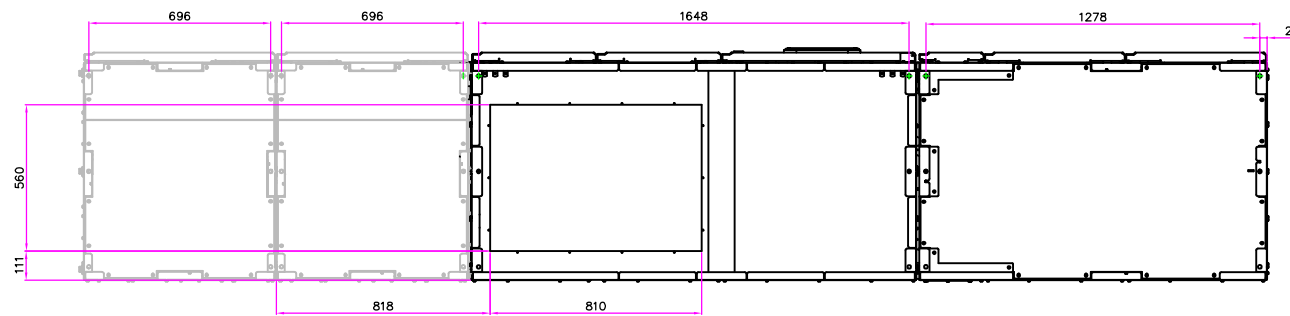
TOP VIEW



LEFT VIEW

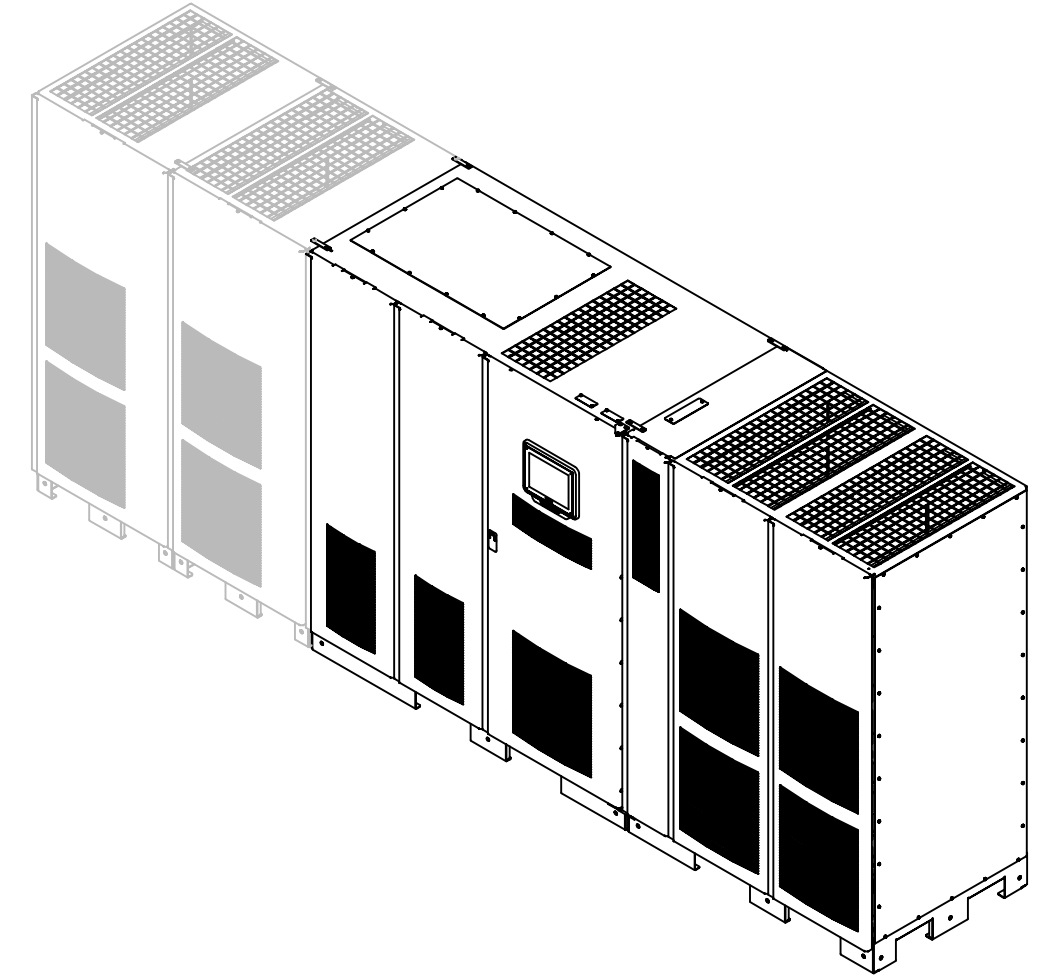


FRONT VIEW



BOTTOM VIEW

Product Specifications						
UPS Rating		Max Heat Dissipation at 100% Load	Dimensions ⁷ WXD ⁷ H	Approx. Weight ⁶ Unpacked	Floor Landing	Cooling Air
KVA	KW	KW	MM	Kg	Kg/m ²	L/S
600	550	25.5	3054X880X1880	1960	921	2080
1100	1000	50.6	4537X880X1880	3175	921	4160

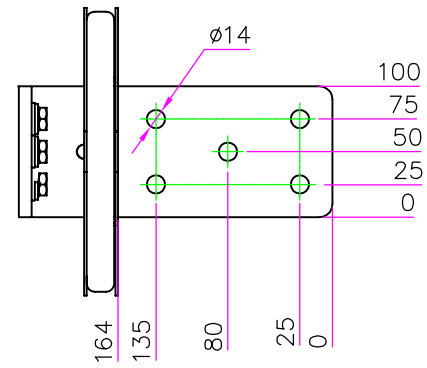


Notes:

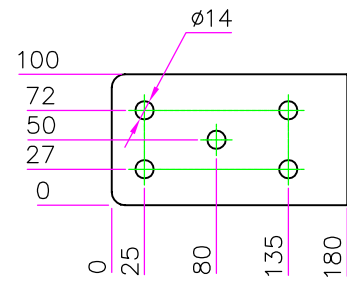
- The system must be installed in a temperature and humidity controlled indoor area free of conductive contaminants.
- Continuous ambient temperature range: 0–40°C (32–104F); Maximum relative humidity: 95% non-condensing.
- Minimum overhead clearance for ventilation above the UPS cabinet is 457mm (18in.).
- Minimum 915mm (36in.) clearance in front of the UPS cabinet is required for cooling air intake and servicing space.
- Top and bottom cable entries through removable access plates are standard for all configurations. Access plates shall be custom-modified to suit conduit sizes.
- When using copper bus bars, add 100Kg to the total weight.
- For system installation an additional 130 mm in width is required.

METRIC	THIRD ANGLE PROJECTION	EATON CORPORATION		EATON	
DIMENSIONS ARE IN MILLIMETERS AFTER PLATING, DIMENSIONS AND TOLERANCES IN ACCORDANCE WITH ASME Y14.5M-1994. SEE NOTES FOR TOLERANCES.					
DESCRIPTION: 9395P 1200–600KVA Dimensional Drawings					
ORIGINATED: ATIF RASHEED	27.04.2015	ECO:	NAME:	REVISION: 001	SIZE: A2
MODIFIED:				STATE: RELEASED	SCALE: 1:20
CHECKED:		DOCUMENT TYPE:	P-110000422		SHEET: 1 OF 7
SAFETY:		AUTOCAD DRAWING			
APPROVED:					

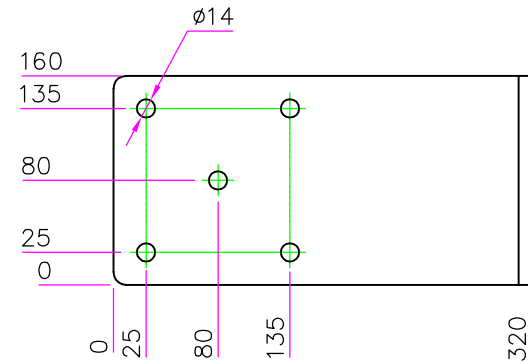
EATON CORPORATION – CONFIDENTIAL AND PROPRIETARY
NOTICE TO PERSONS RECEIVING THIS DOCUMENT AND/OR TECHNICAL INFORMATION
THIS DOCUMENT, INCLUDING THE DRAWING AND INFORMATION CONTAINED THEREIN, IS CONFIDENTIAL AND IS THE EXCLUSIVE PROPERTY OF EATON CORPORATION AND IS LOANED TO YOU AND IS SUBJECT TO RECALL BY EATON AT ANY TIME.
BY YOUR POSSESSION OF THIS DOCUMENT, THE RECIPIENT ACKNOWLEDGES AND AGREES THAT THIS DOCUMENT CANNOT BE USED IN ANY MANNER HARMFUL TO THE INTERESTS OF EATON AND THAT NO PORTION OF THIS DOCUMENT MAY BE COPIED OR OTHERWISE REPRODUCED WITHOUT THE PRIOR WRITTEN CONSENT OF EATON. IN THE CASE OF CONFLICTING CONTRACTUAL PROVISIONS, THIS NOTICE SHALL GOVERN THE STATUS OF THIS DOCUMENT. © 2011 Eaton Corporation – All Rights Reserved.



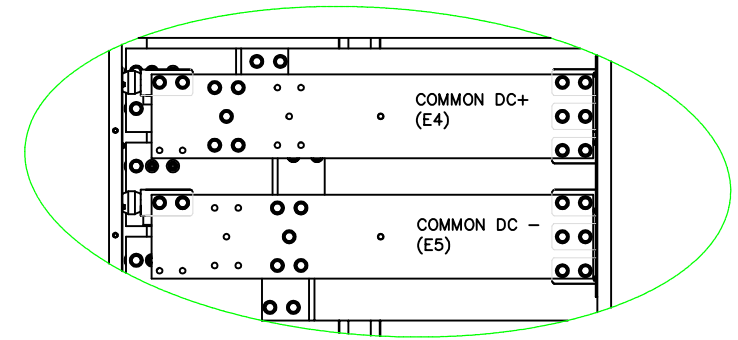
DETAIL A



DETAIL B

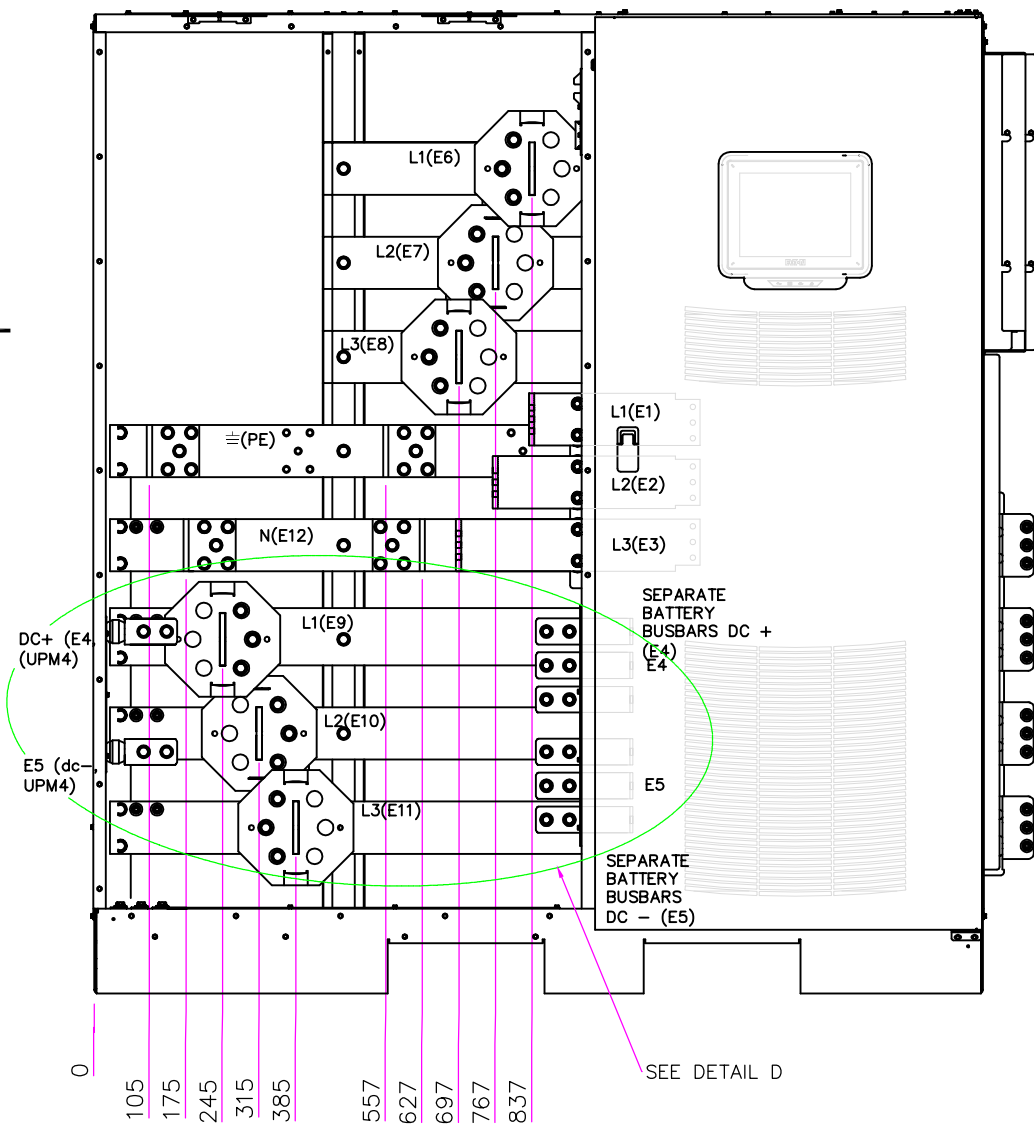


DETAIL C

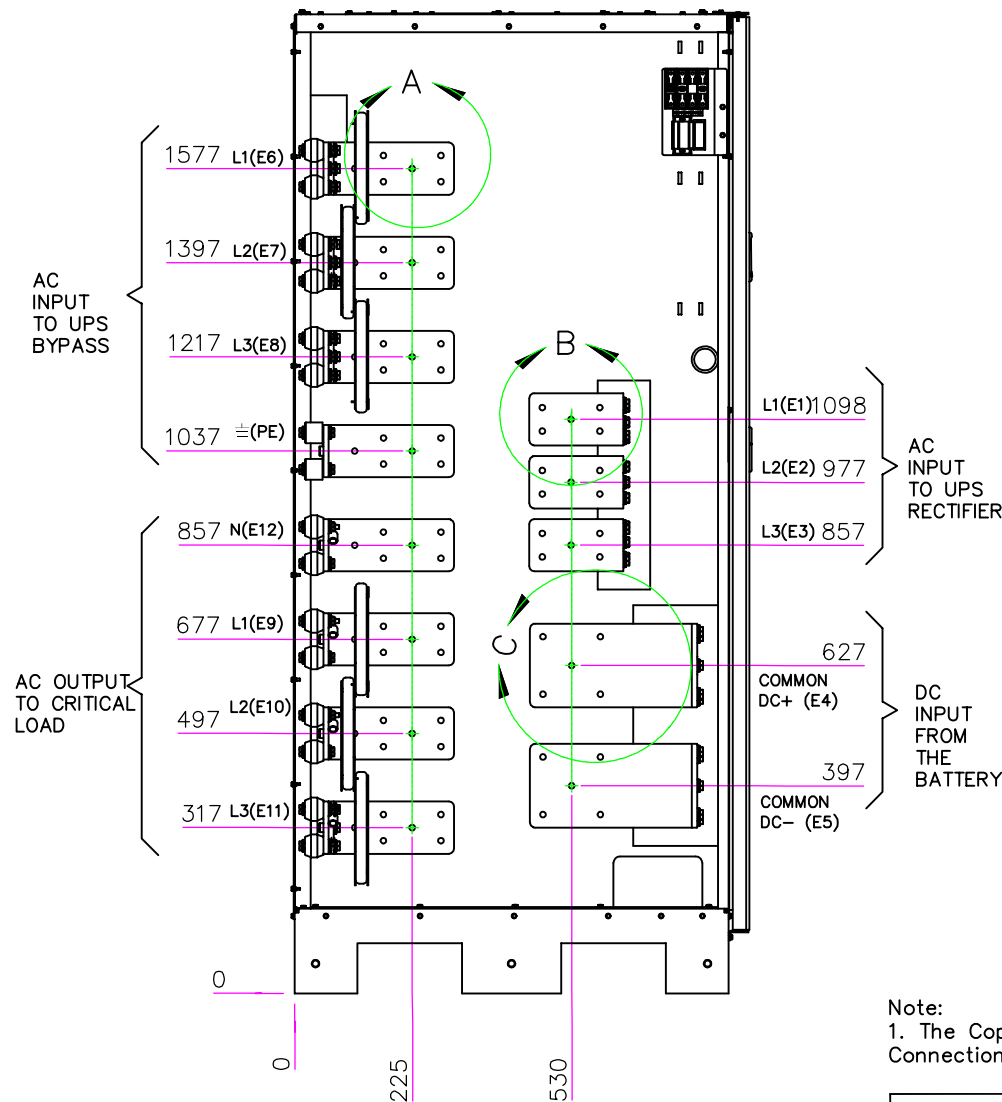


DETAIL D
COMMON BATTERY CONFIGURATION BUSBARS

COPPER BUSBARS



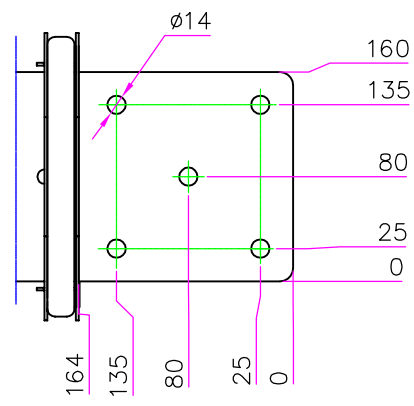
ISBM CABINET FRONT VIEW



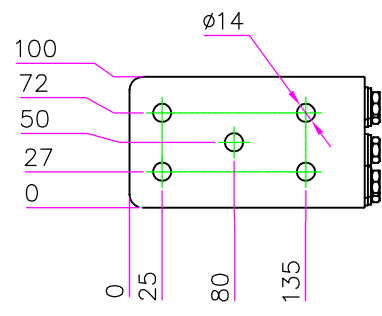
ISBM CABINET LEFT VIEW

Note:
1. The Copper Bus Bars are Tin coated and are suitable for both Al and Cu Connections.

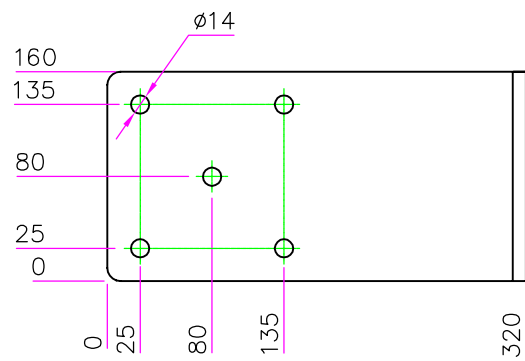
METRIC		THIRD ANGLE PROJECTION		EATON CORPORATION		EATON	
DIMENSIONS ARE IN MILLIMETERS AFTER PLATING, DIMENSIONS AND TOLERANCES IN ACCORDANCE WITH ASME Y14.5M-1994. SEE NOTES FOR TOLERANCES.							
DESCRIPTION: 9395P 1200-600KVA With Copper Bus Bars							
ORIGINATED: ATIF RASHEED	27.04.2015	ECO:	NAME:	REVISION: 001	SIZE: A2		
MODIFIED:				STATE:	SCALE: 1:10		
CHECKED:		DOCUMENT TYPE:	P-110000422	RELEASED	SHEET:		
SAFETY:		AUTOCAD DRAWING			2 OF 7		
APPROVED:							
EATON CORPORATION - CONFIDENTIAL AND PROPRIETARY NOTICE TO PERSONS RECEIVING THIS DOCUMENT AND/OR TECHNICAL INFORMATION THIS DOCUMENT, INCLUDING THE DRAWING AND INFORMATION CONTAINED THEREIN, IS CONFIDENTIAL AND IS THE EXCLUSIVE PROPERTY OF EATON CORPORATION, AND IS LOANED AND SUBJECT TO RECALL BY EATON AT ANY TIME. BY THEIR POSSESSION OF THIS DOCUMENT, THE RECIPIENT ACKNOWLEDGES AND AGREES THAT THIS DOCUMENT CANNOT BE USED IN ANY MANNER HARMFUL TO THE INTERESTS OF EATON AND THAT NO PORTION OF THIS DOCUMENT MAY BE COPIED OR OTHERWISE REPRODUCED WITHOUT THE PRIOR WRITTEN CONSENT OF EATON. IN THE CASE OF CONFLICTING CONTRACTUAL PROVISIONS, THIS NOTICE SHALL GOVERN THE STATUS OF THIS DOCUMENT. © 2011 Eaton Corporation - All Rights Reserved.							



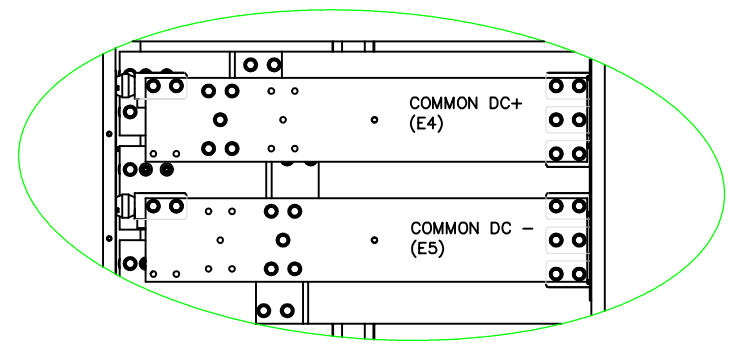
DETAIL A



DETAIL B

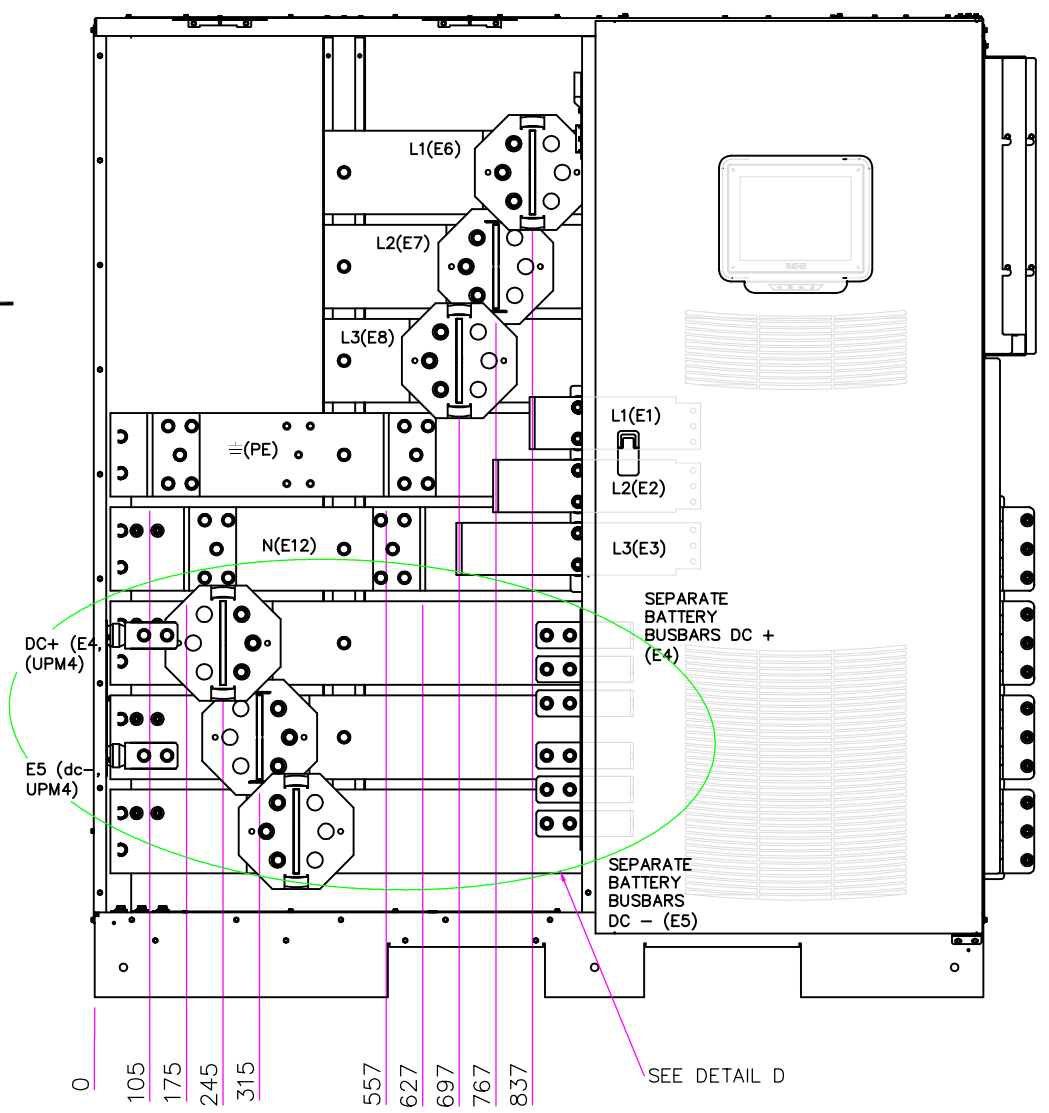


DETAIL C

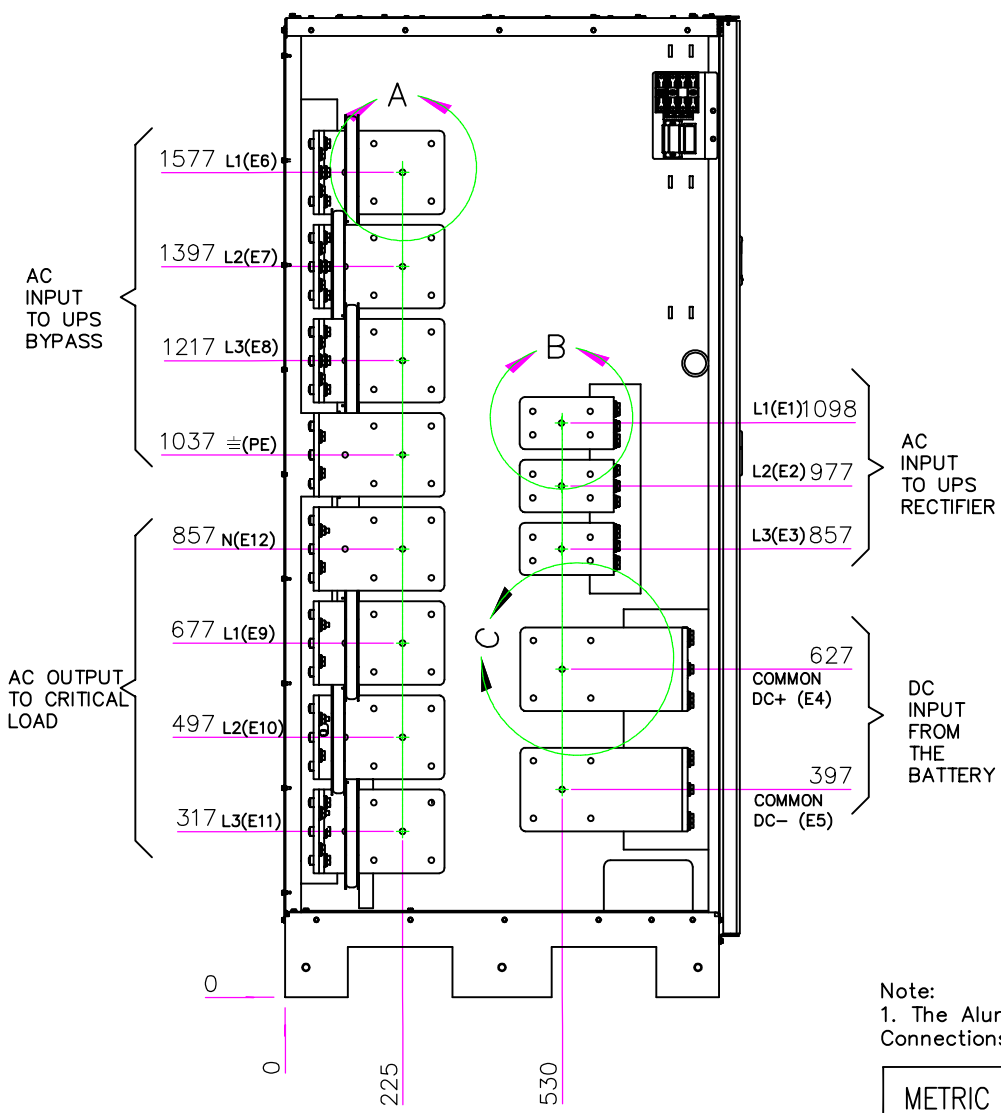


DETAIL D
COMMON BATTERY CONFIGURATION BUSBARS

ALUMINIUM BUSBARS



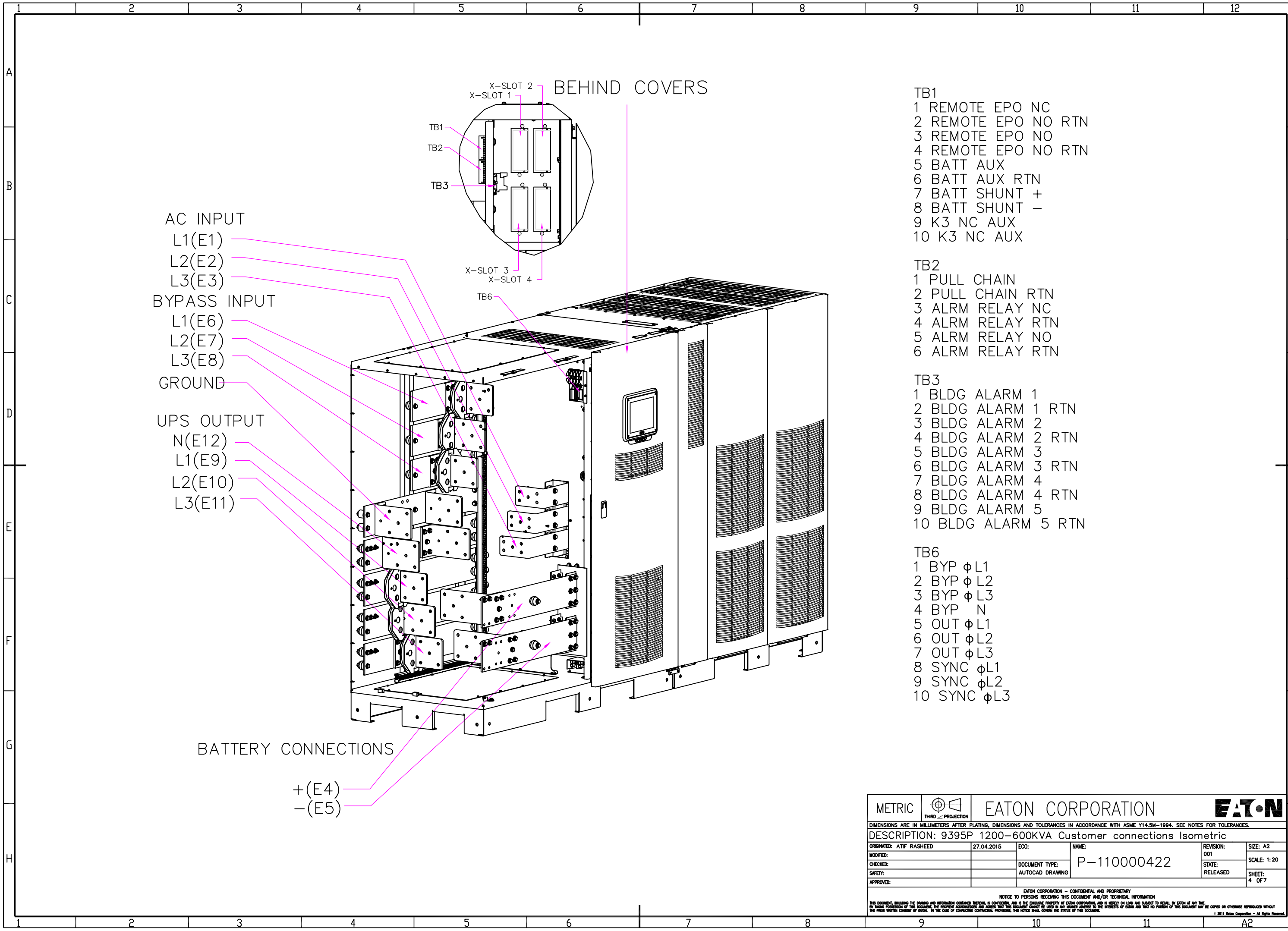
ISBM CABINET FRONT VIEW



ISBM CABINET LEFT VIEW

Note:
1. The Aluminum Bus Bars are Tin coated and are suitable for both Al and Cu Connections.

METRIC		EATON CORPORATION		EATON	
DIMENSIONS ARE IN MILLIMETERS AFTER PLATING, DIMENSIONS AND TOLERANCES IN ACCORDANCE WITH ASME Y14.5M-1994. SEE NOTES FOR TOLERANCES.					
DESCRIPTION: 9395P 1200-600KVA With Aluminium Bus Bars					
ORIGINATED: ATIF RASHEED	27.04.2015	ECO:	NAME:	REVISION: 001	SIZE: A2
MODIFIED:				STATE: RELEASED	SCALE: 1:10
CHECKED:		DOCUMENT TYPE:	P-110000422		SHEET: 3 OF 7
SAFETY:		AUTOCAD DRAWING			
APPROVED:					
EATON CORPORATION - CONFIDENTIAL AND PROPRIETARY NOTICE TO PERSONS RECEIVING THIS DOCUMENT AND/OR TECHNICAL INFORMATION THIS DOCUMENT, INCLUDING THE DRAWING AND INFORMATION CONTAINED THEREIN, IS CONFIDENTIAL AND IS THE EXCLUSIVE PROPERTY OF EATON CORPORATION AND IS LOANED AND SUBJECT TO RECALL BY EATON AT ANY TIME. BY FURTHER POSSESSION OF THIS DOCUMENT, THE RECIPIENT ACKNOWLEDGES AND AGREES THAT THIS DOCUMENT CANNOT BE USED IN ANY MANNER CONTRARY TO THE INTERESTS OF EATON AND THAT NO PORTION OF THIS DOCUMENT MAY BE COPIED OR OTHERWISE REPRODUCED WITHOUT THE PRIOR WRITTEN CONSENT OF EATON. IN THE CASE OF CONFLICTING CONTRACTUAL PROVISIONS, THIS NOTICE SHALL GOVERN THE STATUS OF THIS DOCUMENT. © 2011 Eaton Corporation - All Rights Reserved.					



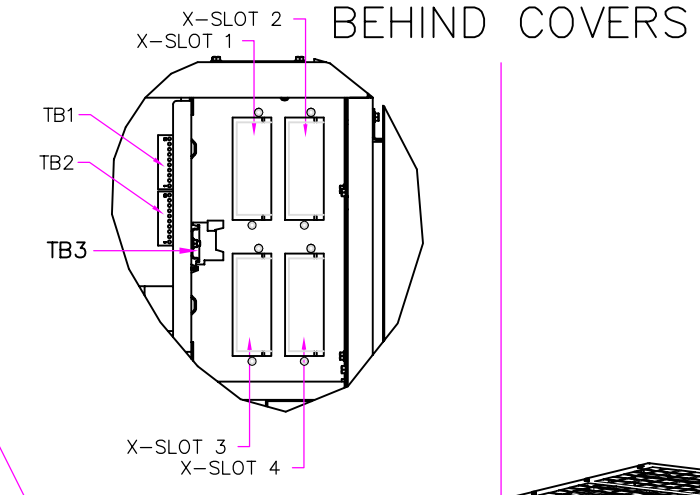
AC INPUT
 L1(E1)
 L2(E2)
 L3(E3)

BYPASS INPUT
 L1(E6)
 L2(E7)
 L3(E8)

GROUND

UPS OUTPUT
 N(E12)
 L1(E9)
 L2(E10)
 L3(E11)

+(E4)
 -(E5)



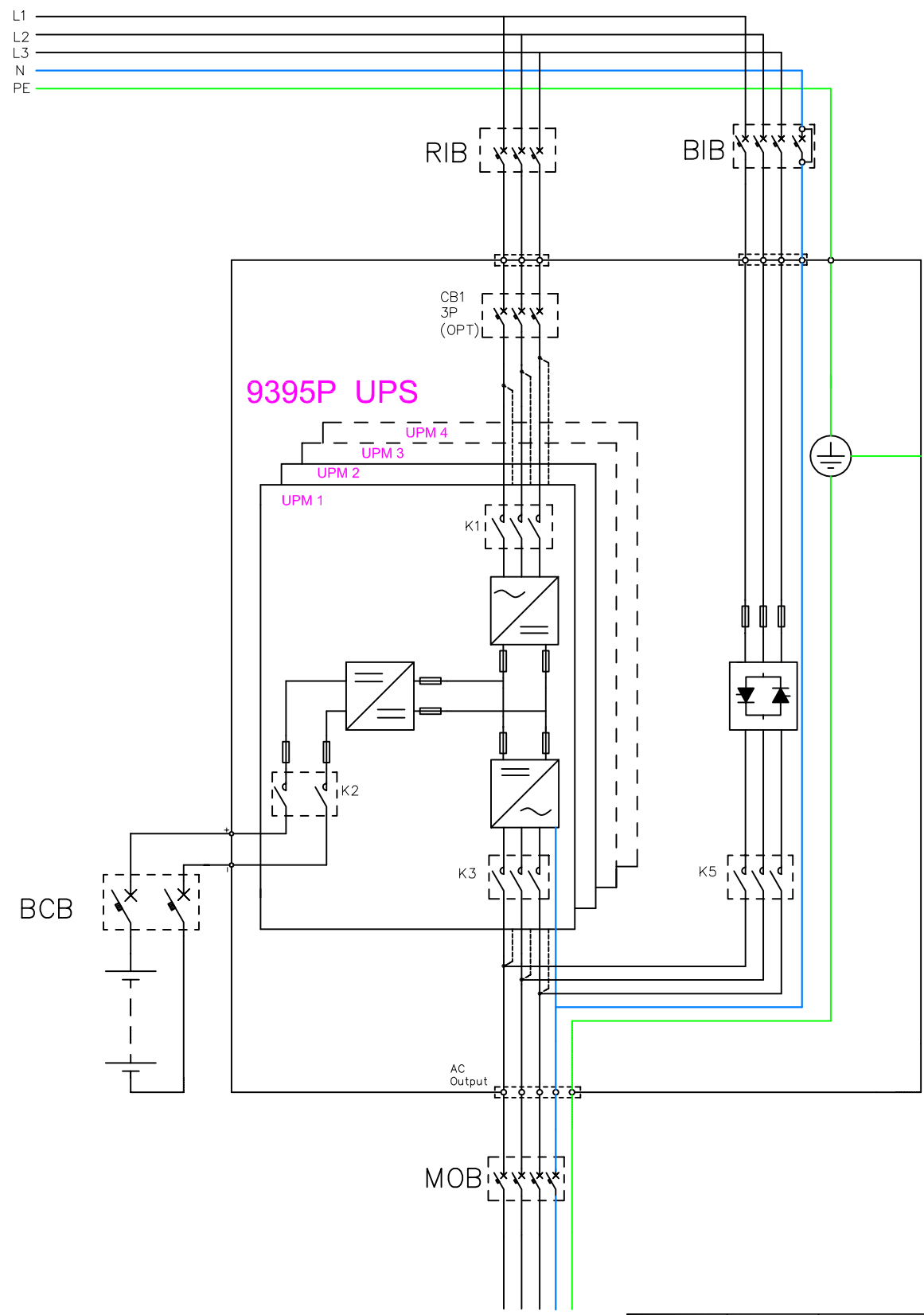
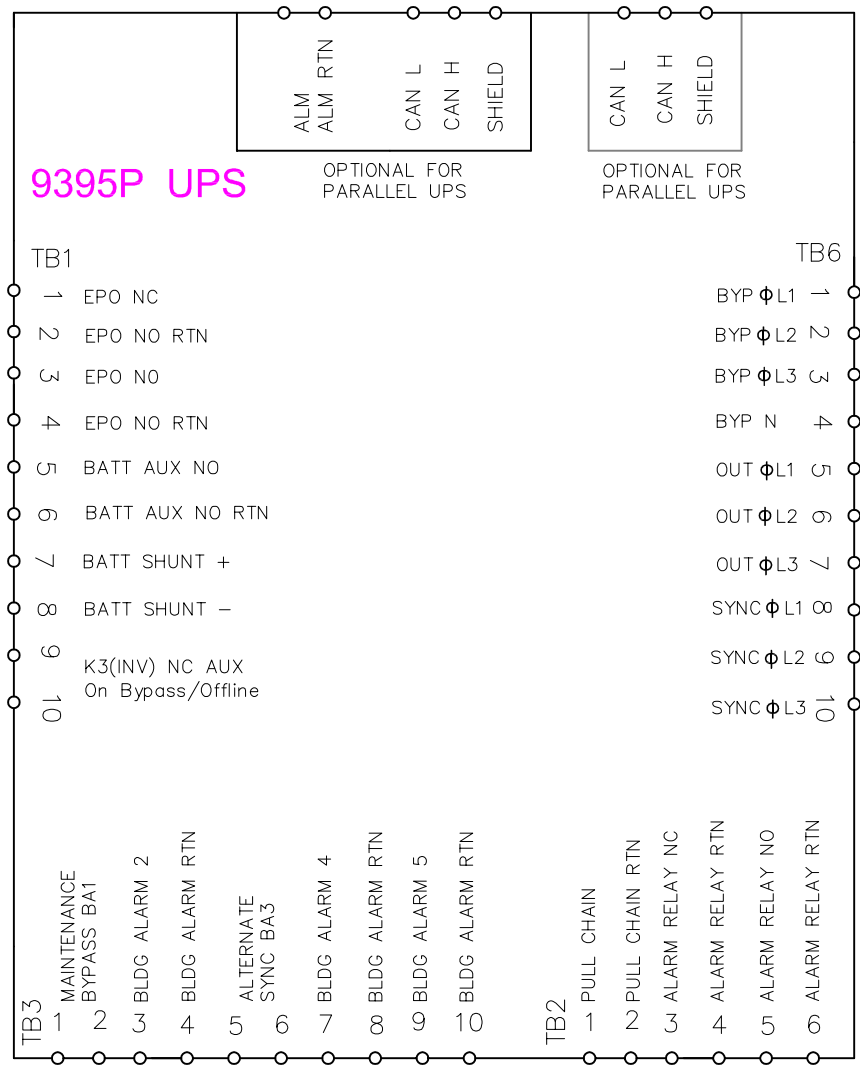
TB1
 1 REMOTE EPO NC
 2 REMOTE EPO NO RTN
 3 REMOTE EPO NO
 4 REMOTE EPO NO RTN
 5 BATT AUX
 6 BATT AUX RTN
 7 BATT SHUNT +
 8 BATT SHUNT -
 9 K3 NC AUX
 10 K3 NC AUX

TB2
 1 PULL CHAIN
 2 PULL CHAIN RTN
 3 ALRM RELAY NC
 4 ALRM RELAY RTN
 5 ALRM RELAY NO
 6 ALRM RELAY RTN

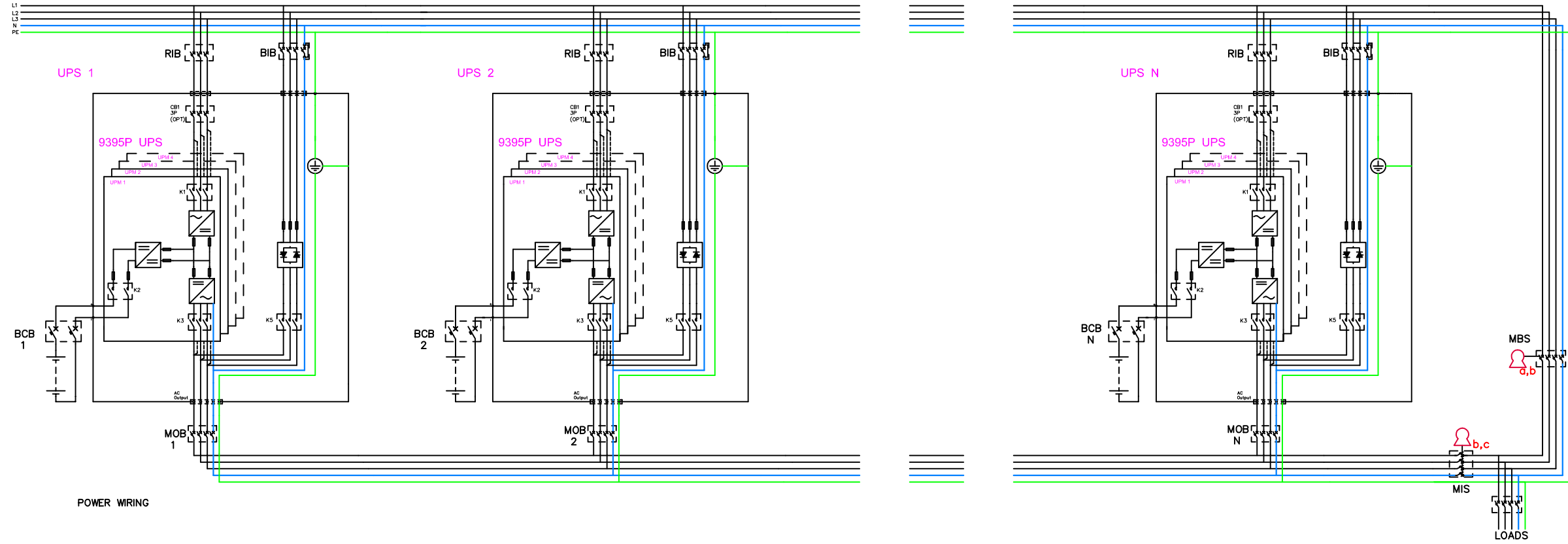
TB3
 1 BLDG ALARM 1
 2 BLDG ALARM 1 RTN
 3 BLDG ALARM 2
 4 BLDG ALARM 2 RTN
 5 BLDG ALARM 3
 6 BLDG ALARM 3 RTN
 7 BLDG ALARM 4
 8 BLDG ALARM 4 RTN
 9 BLDG ALARM 5
 10 BLDG ALARM 5 RTN

TB6
 1 BYP ϕ L1
 2 BYP ϕ L2
 3 BYP ϕ L3
 4 BYP N
 5 OUT ϕ L1
 6 OUT ϕ L2
 7 OUT ϕ L3
 8 SYNC ϕ L1
 9 SYNC ϕ L2
 10 SYNC ϕ L3

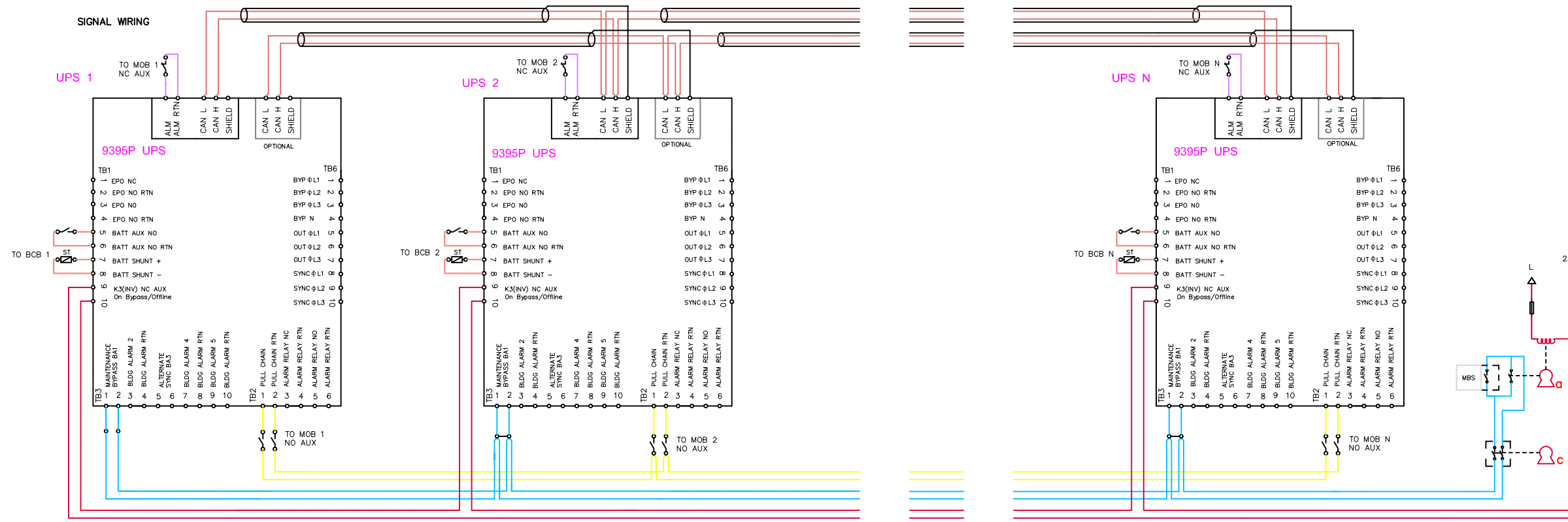
METRIC		THIRD ANGLE PROJECTION		EATON CORPORATION			
DIMENSIONS ARE IN MILLIMETERS AFTER PLATING, DIMENSIONS AND TOLERANCES IN ACCORDANCE WITH ASME Y14.5M-1994. SEE NOTES FOR TOLERANCES.							
DESCRIPTION: 9395P 1200-600KVA Customer connections Isometric							
ORIGINATED: ATIF RASHEED	27.04.2015	ECO:	NAME:	REVISION: 001	SIZE: A2		
MODIFIED:		DOCUMENT TYPE: P-110000422	STATE: RELEASED	SCALE: 1:20			
CHECKED:		SAFETY:	APPROVED:	SHEET: 4 OF 7			
<small>EATON CORPORATION - CONFIDENTIAL AND PROPRIETARY NOTICE TO PERSONS RECEIVING THIS DOCUMENT AND/OR TECHNICAL INFORMATION THIS DOCUMENT, INCLUDING THE DRAWING AND INFORMATION CONTAINED THEREON, IS CONFIDENTIAL AND IS THE EXCLUSIVE PROPERTY OF EATON CORPORATION AND IS LOANED TO YOU AND SUBJECT TO RECALL BY EATON AT ANY TIME. BY TAKING POSSESSION OF THIS DOCUMENT, THE RECIPIENT ACKNOWLEDGES AND AGREES THAT THIS DOCUMENT CANNOT BE USED IN ANY MANNER CONTRARY TO THE INTERESTS OF EATON AND THAT NO PORTION OF THIS DOCUMENT MAY BE COPIED OR OTHERWISE REPRODUCED WITHOUT THE PRIOR WRITTEN CONSENT OF EATON. IN THE CASE OF CONFLICTING CONTRACTUAL PROVISIONS, THIS NOTICE SHALL GOVERN THE STATUS OF THIS DOCUMENT. © 2011 Eaton Corporation - All Rights Reserved.</small>							



METRIC		EATON CORPORATION		EATON	
DIMENSIONS ARE IN MILLIMETERS AFTER PLATING, DIMENSIONS AND TOLERANCES IN ACCORDANCE WITH ASME Y14.5M-1994. SEE NOTES FOR TOLERANCES.					
DESCRIPTION: 9395P 1200-600KVA Electrical Wiring					
ORIGINATED: ATIF RASHEED	27.04.2015	ECO:	NAME:	REVISION: 001	SIZE: A2
MODIFIED:				STATE: RELEASED	SCALE: 1:20
CHECKED:		DOCUMENT TYPE:	P-110000422		SHEET: 5 OF 7
SAFETY:					
APPROVED:					
EATON CORPORATION - CONFIDENTIAL AND PROPRIETARY NOTICE TO PERSONS RECEIVING THIS DOCUMENT AND/OR TECHNICAL INFORMATION THIS DOCUMENT, INCLUDING THE DRAWING AND INFORMATION CONTAINED THEREIN, IS CONFIDENTIAL AND IS THE EXCLUSIVE PROPERTY OF EATON CORPORATION AND IS LOANED TO YOU BY EATON AT ANY TIME. IT IS NOT TO BE REPRODUCED OR TRANSMITTED IN ANY FORM OR BY ANY MEANS, ELECTRONIC OR MECHANICAL, INCLUDING PHOTOCOPYING, RECORDING, OR BY ANY INFORMATION STORAGE AND RETRIEVAL SYSTEM, WITHOUT THE PRIOR WRITTEN CONSENT OF EATON. IN THE CASE OF CONFLICTING CONTRACTUAL PROVISIONS, THIS NOTICE SHALL GOVERN THE STATUS OF THIS DOCUMENT. © 2011 Eaton Corporation - All Rights Reserved.					



POWER WIRING



SIGNAL WIRING

MBS STATUS (Provided by others, Installed by others)
0.75 - 2.5mm² twisted pair (if possible, else shielded)
No earth needed

MOB STATUS (Provided by others, Installed by others)
0.75 - 2.5mm² twisted pair (if possible, else shielded)
No earth needed

PCAN (DUAL AS OPTION)
Provided by Eaton, Installed by Eaton

PULL CHAIN (REDUNDANT ON BYP STATUS)
Provided by Eaton, Installed by Eaton

ON BYPASS STATUS (NO INVERTORS ONLINE)
Provided by others, Installed by others
1.5 - 2.5mm², 600v

- Mechanical bypass Interlocking sequence
- Place UPS system to bypass. On bypass status (K3) will energize Key A solenoid to release it
 - Removing key A will switch on "force bypass" to the UPS system
 - Place key A to MBS breaker and close breaker. Key B will be released.
 - Aux contact of MBS will keep "force bypass" on UPS system
 - Place key B to MIS breaker and open MIS to isolate UPS system from load, Key C will be released
 - Place key C to It's dedicated keyhole to release "force bypass" command to allow UPS system testing

METRIC		EATON CORPORATION	
DIMENSIONS ARE IN MILLIMETERS AFTER PLATING, DIMENSIONS AND TOLERANCES IN ACCORDANCE WITH ASME Y14.5M-1994. SEE NOTES FOR TOLERANCES.			
DESCRIPTION: 9395P 1200-600KVA Wiring Parallel Units			
ORIGINATED: ATIF RASHEED	27.04.2015	ECO:	NAME:
MODIFIED:		DOCUMENT TYPE:	P-110000422
CHECKED:		AUTOCAD DRAWING	REVISION: 001
SAFETY:			STATE: RELEASED
APPROVED:			SHEET: 6 OF 7

EATON CORPORATION - CONFIDENTIAL AND PROPRIETARY
NOTICE TO PERSONS RECEIVING THIS DOCUMENT AND/OR TECHNICAL INFORMATION
THIS DOCUMENT, INCLUDING THE DRAWING AND INFORMATION CONTAINED THEREIN, IS CONFIDENTIAL AND IS THE EXCLUSIVE PROPERTY OF EATON CORPORATION AND IS LOANED AND SUBJECT TO RECALL BY EATON AT ANY TIME.
BY YOUR POSSESSION OF THIS DOCUMENT, THE RECIPIENT ACKNOWLEDGES AND AGREES THAT THIS DOCUMENT SHALL BE USED IN AN MANNER SERVING THE INTERESTS OF EATON AND THAT NO PORTION OF THIS DOCUMENT MAY BE COPIED OR OTHERWISE REPRODUCED WITHOUT THE PRIOR WRITTEN CONSENT OF EATON. IN THE CASE OF CONFLICTING CONTRACTUAL PROVISIONS, THIS NOTICE SHALL GOVERN THE STATUS OF THIS DOCUMENT.
© 2011 Eaton Corporation - All Rights Reserved.

9395 P 1200-600 KVA UPS Site Planning Data

Product Specifications																		
UPS Rating		AC Input	3P Rectifier Input Breaker (RIB)		3P+Bolted N Bypass Input Breaker (BIB)			AC Output	4P Inverter AC output Breaker MOB			Battery Breaker (BCB) (Ratings at the end of discharge, 1.67VPC)				For Parallel Units Common Maintenance Bypass Switch (MBS)		
			Nominal Current	Maximum Current	Nominal Current at 400v Input	Maximum Current at 10% under voltage	Integrated Bypass Fuse		Output Current	Inverter Short Circuit Current	Auxiliary Switches	Rating	Separate Battery Configuration (UPM Bttery)	Common Battery Configuration (UPS Battery)	Trip Device (Shunt Trip)	Auxiliary Switches	Rating	Auxiliary Switches
KVA	KW	v	A	A	A	A	Type	v	A	A	Qty	VDC	A	A	VDC	Qty	A	Qty
600	550	400	840	1000	1733	1907	170M7084 3000A	400	870	1305	2	600	733	1465	48	1	870 x N	1
1200	1100	400	1665	2000	1733	1907	170M7084 3000A	400	1733	3040	2	600	733	2920	48	1	1733 x N	1

Notes:

1. Rectifier AC input current calculations: Nominal – 100% load without charging; Maximum – 100% load with maximum charging (Rectifier current limit).
2. Inverter AC output current calculation: At 100% rated output load.
3. The system must be installed on a level floor suitable for computer or electronic equipment.
4. All wiring and installations must be in accordance with applicable National and Local Electric Regulations.
5. AC input to UPS: (3) phases, (1) neutral, (1) ground.
AC output to load: (3) phases, (1) neutral, (1) ground.
DC input from battery to UPS: (1) positive, (1) negative, (1) ground.
6. All breakers should be adjusted according to the specified Ampere values to protect the UPS and installation.
7. For UPS installations that utilizes single feed input, The input breaker should be configured according to the rated rectifier input current..
8. Specifications are subject to change.

METRIC	THIRD ANGLE PROJECTION	EATON CORPORATION	
DIMENSIONS ARE IN MILLIMETERS AFTER PLATING, DIMENSIONS AND TOLERANCES IN ACCORDANCE WITH ASME Y14.5M-1994. SEE NOTES FOR TOLERANCES.			
DESCRIPTION: 9395P 1200-600KVA Specifications			
ORIGINATED: ATIF RASHEED	27.04.2015	ECO:	NAME:
MODIFIED:		DOCUMENT TYPE:	P-110000422
CHECKED:		SAFETY:	RELEASED
APPROVED:		REVISION:	001
		STATE:	7 OF 7
EATON CORPORATION - CONFIDENTIAL AND PROPRIETARY NOTICE TO PERSONS RECEIVING THIS DOCUMENT AND/OR TECHNICAL INFORMATION THIS DOCUMENT, INCLUDING THE DRAWING AND INFORMATION CONTAINED THEREON, IS CONFIDENTIAL AND IS THE EXCLUSIVE PROPERTY OF EATON CORPORATION AND IS LOANED TO YOU AND SUBJECT TO RETURN TO EATON AT ANY TIME. BY TAKING POSSESSION OF THIS DOCUMENT, THE RECIPIENT ACKNOWLEDGES AND AGREES THAT THIS DOCUMENT CANNOT BE USED IN ANY MANNER HARMFUL TO THE INTERESTS OF EATON AND THAT NO PORTION OF THIS DOCUMENT MAY BE COPIED OR OTHERWISE REPRODUCED WITHOUT THE PRIOR WRITTEN CONSENT OF EATON. IN THE CASE OF CONFLICTING CONTRACTUAL PROVISIONS, THIS NOTICE SHALL GOVERN THE STATUS OF THIS DOCUMENT. © 2011 Eaton Corporation - All Rights Reserved.			