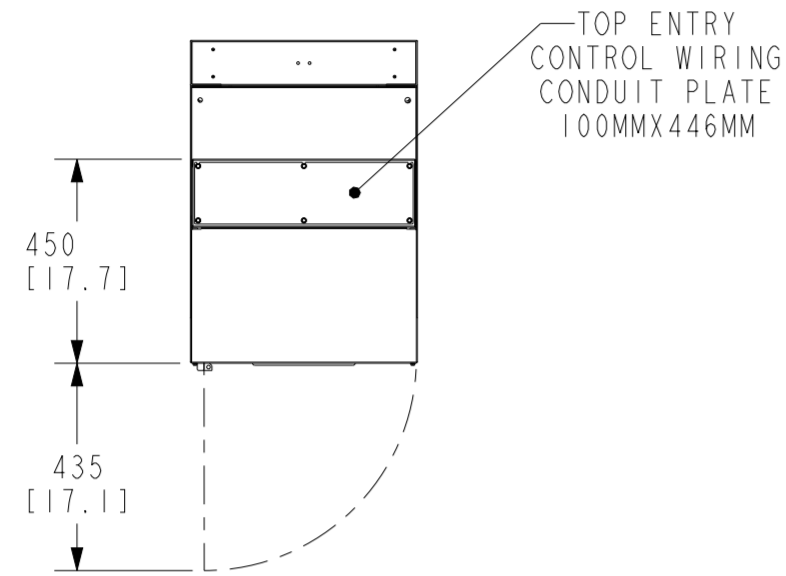


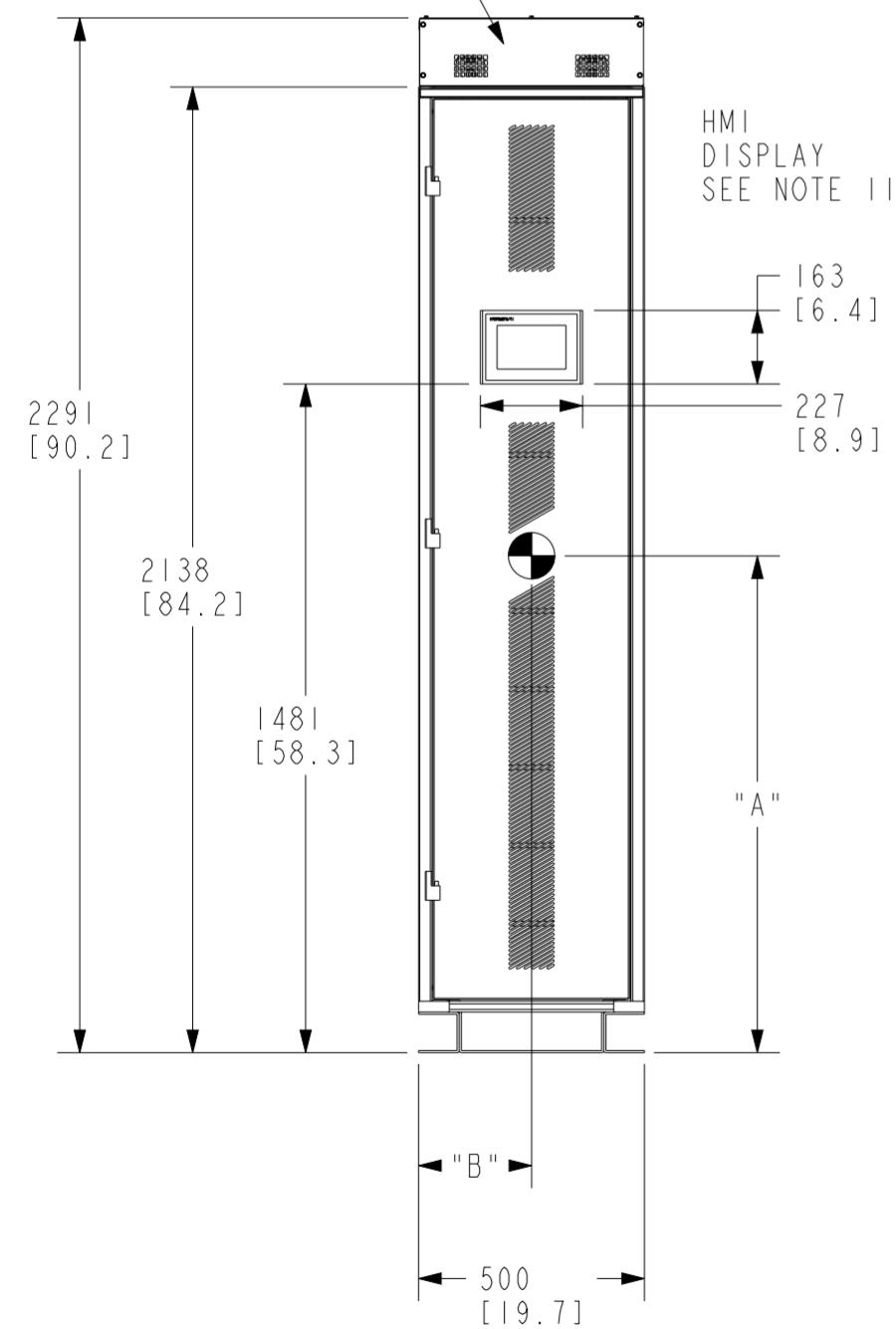
TOP VIEW



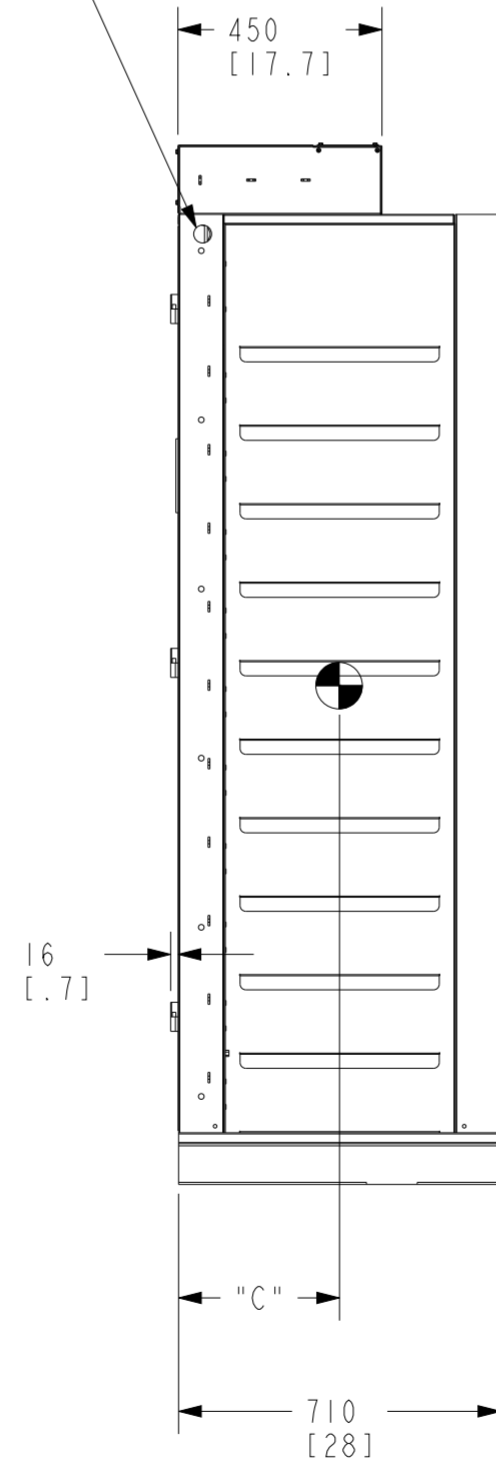
TOP-WIRING CONDUIT LANDING KIT TO BE INSTALLED AS NEEDED ON SITE

INTER-CABINET CONTROL WIRING ACCESS (BOTH SIDES)

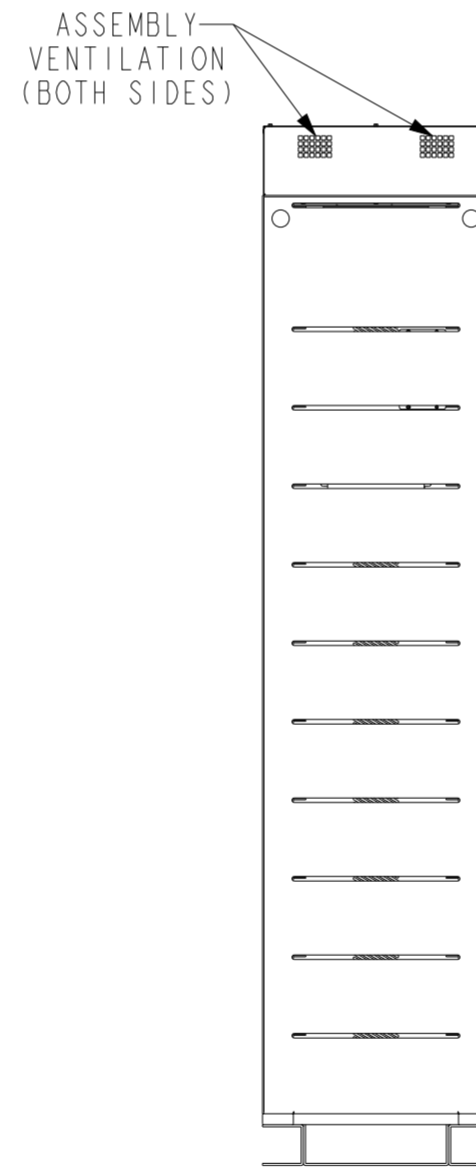
HMI DISPLAY SEE NOTE 11



FRONT VIEW



SIDE VIEW



BACK VIEW

WEIGHT AND CENTER OF GRAVITY			
DIMENSIONS MM			WEIGHT kg [lbs]
A	B	C	
1240	250	370	540 [1188]

PACKAGED ENVELOPE DIMENSIONS MM [IN]		
WIDTH	DEPTH	HEIGHT
640 [25.2]	740 [29.1]	2258 [88.9]

PRODUCT SPECIFICATION		
BATTERY CABINET MODEL	DC VOLTAGE OUTPUT, V (NOMINAL)	BATTERY NAMEPLATE kWh
5C	512	28

HEAT REJECTION	
MAX HEAT REJECTION	1,600 BTU/hr

BREAKER AND FUSE INFORMATION - NARADA 5C BATTERY CABINET			
	MANUFACTURER	PART NUMBER	QUANTITY/LOCATION
BATTERY CABINET FUSE	SINOFUSE	RS306-1-T5Z-550A1250V-D	2/INTERNAL/CABINET
BATTERY CABINET BREAKER	SIEMENS	3VA5445-5EC31-0AA0	1/FRONT/CABINET

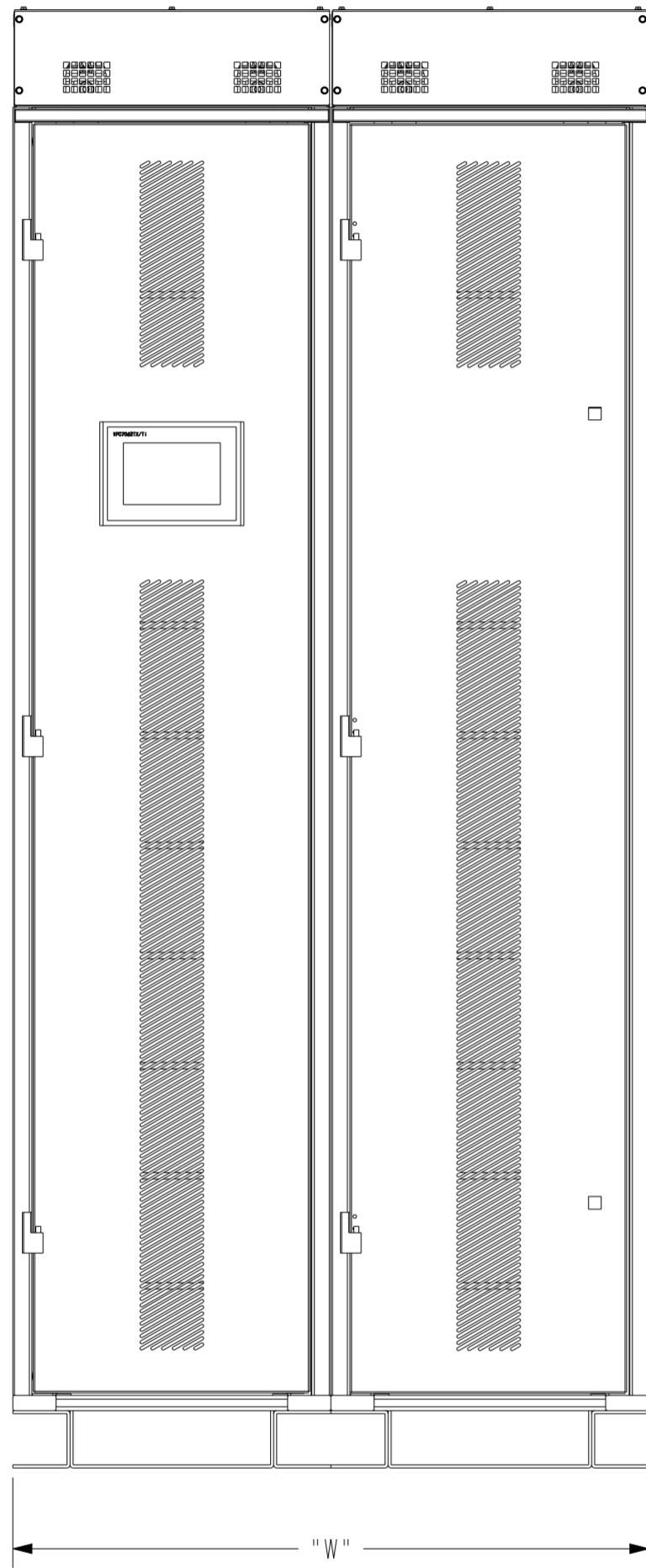
RECOMMENDED CUSTOMER SUPPLIED WIRING		
MINIMUM WIRE SIZE FOR 75 deg C COPPER STRANDED WIRE		RECOMMENDED TORQUE
BATTERY WIRES	4/0 AWG (2X PER POLE, 2 CONDUITS) 2 HOLE LUG LANDINGS, 1-3/4" SPACING	25 N-M
GROUND WIRES	1/0 AWG or (2X) #2 AWG	10-12 N-M
CONTROL WIRES	#18 TWISTED PAIR (UP TO 4 SETS)	5 LB-IN

- NOTES
1. THE SYSTEM MUST BE INSTALLED ON A LEVEL FLOOR SURFACE SUITABLE FOR COMPUTER OR ELECTRONIC EQUIPMENT.
  2. THE SYSTEM MUST BE INSTALLED IN A TEMPERATURE AND HUMIDITY CONTROLLED INDOOR AREA FREE OF CONDUCTIVE CONTAMINANTS.
  3. AMBIENT TEMPERATURE RANGE 0-40degC [32-104degF]:  
RECOMMENDED OPERATING RANGE: 15-35degC [59-95degF]:  
RELATIVE HUMIDITY: 5%-95% NON-CONDENSING.
  4. WEIGHT: SEE TABLE, SOME OPTIONS WILL WEIGH LESS. WEIGHTS DO NOT INCLUDE CUSTOMER WIRING.
  5. MINIMUM 914mm [36"] FRONT ACCESS NEEDED FOR SERVICING, MINIMUM 170mm [7"] TOP ACCESS NEEDED FOR INSTALLATION, MINIMUM 76mm [3"] REAR CLEARANCE FOR VENTILATION.
  6. VENTILATION IS BY MEANS OF NATURAL CONVECTION.
  7. TOP CABLE ENTRY THROUGH REMOVABLE CONDUIT LANDING PLATE.
  8. ALL WIRING IS TO BE IN ACCORDANCE WITH NATIONAL AND LOCAL ELECTRIC CODES.
  9. POWER HOOKUP TO UPS: POSITIVE, NEGATIVE, GROUND.
  10. SPECIFICATIONS ARE SUBJECT TO CHANGE.
  11. HMI DISPLAY WILL BE ONLY ON ONE CABINET PER LINEUP.

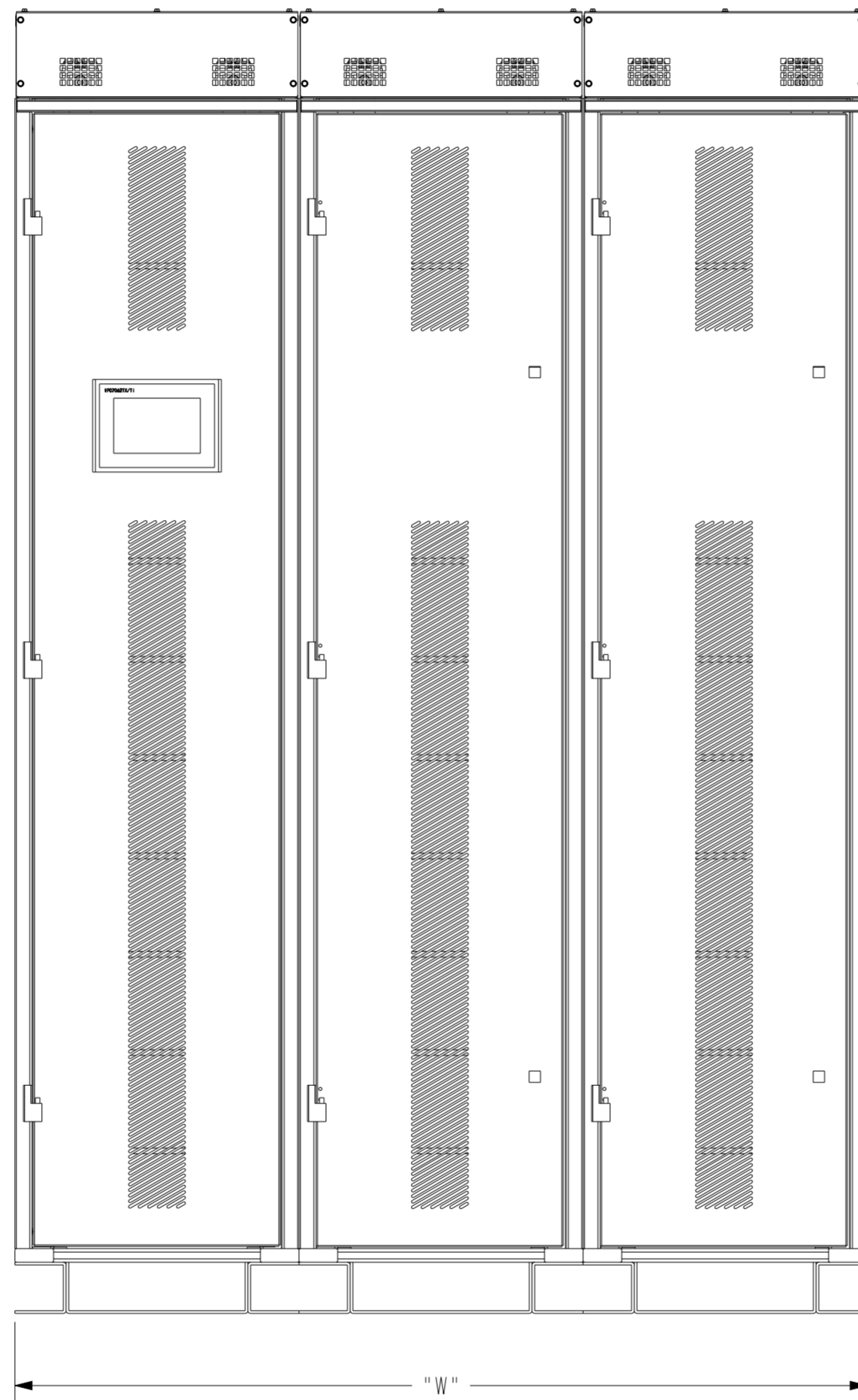
METRIC	THIRD ANGLE PROJECTION	NAME (PART NUMBER): P-1100000893	REVISION: 02	<b>EATON</b>
DESCRIPTION: SITE PLAN, LXP-P 5C LI-ION CABINET				SIZE: A2
ORIGINATED BY: DOMURATH, F	06-OCT-2021	SEE NOTES FOR TOLERANCES DIM ARE IN MM (INCHES) AFTER PLATING INTERPRET DIM AND TOL PER ASME Y14.5-2018	STATE: RELEASE	SCALE: 3:50
MODIFIED BY: DOMURATH, F			ECO: CO-0218419	SHEET: 1 of 4
<small>EATON CORPORATION - CONFIDENTIAL AND PROPRIETARY. NOTICE TO PERSONS RECEIVING THIS DOCUMENT AND/OR TECHNICAL INFORMATION: THIS DOCUMENT, INCLUDING THE DRAWING AND INFORMATION CONTAINED THEREON, IS CONFIDENTIAL AND IS THE EXCLUSIVE PROPERTY OF EATON CORPORATION, AND IS LOANED TO YOU BY EATON AS AN INSTRUMENT OF SERVICE. BY TAKING POSSESSION OF THIS DOCUMENT, YOU ARE AGREEING TO HOLD IT IN CONFIDENCE AND TO RETURN IT TO EATON AT ANY TIME. YOU ARE NOT TO REPRODUCE, COPY, DISSEMINATE, OR IN ANY MANNER ADVERSE TO THE INTERESTS OF EATON, THIS DOCUMENT OR THE INFORMATION CONTAINED THEREIN. ANY REPRODUCTION OR DISSEMINATION OF THIS DOCUMENT OR THE INFORMATION CONTAINED THEREIN WITHOUT THE PRIOR WRITTEN CONSENT OF EATON, IN THE CASE OF CONFLICTING CONTRACTUAL PROVISIONS, THIS NOTICE SHALL GOVERN THE STATUS OF THIS DOCUMENT. © 2021 Eaton Corporation - All Rights Reserved.</small>				

LINE-UP REPRESENTATION

LINE-UP NUMBER 2



LINE-UP NUMBER 3



LINE-UP NUMBER	NUMBER OF BATTERY CABINETS	QUANTITY OF ACCESSORY IN SPECIFIED LINE-UP		TOTAL WIDTH("W")	
		BATTERY CABINET WITH HMI	BATTERY CABINET WITHOUT HMI	MM	IN
1	1	1	0	500	19.7
2	2	1	1	1000	39.4
3	3	1	2	1500	59
4	4	1	3	2000	78.7
5	5	1	4	2500	98.4
6	6	1	5	3000	118.1
7	7	1	6	3500	137.8
8	8	1	7	4000	157.5

NOTE: HEIGHT AND DEPTH SAME FOR ALL LINE-UPS

METRIC	THIRD ANGLE PROJECTION	NAME (PART NUMBER): P-1110000893	REVISION: 02	<b>EATON</b>
DESCRIPTION: SITE PLAN, LXP-P 5C LI-ION CABINET				SIZE: A2
ORIGINATED BY: DOMURATH, F	06-OCT-2021	SEE NOTES FOR TOLERANCES DIM ARE IN MM (INCHES) AFTER PLATING INTERPRET DIM AND TOL PER ASME Y14.5-2018	STATE: RELEASE	SCALE: 1:10
MODIFIED BY: DOMURATH, F	27-OCT-2021		ECO: CO-0218419	SHEET: 2 OF 4
<small>EATON CORPORATION - CONFIDENTIAL AND PROPRIETARY. NOTICE TO PERSONS RECEIVING THIS DOCUMENT AND/OR TECHNICAL INFORMATION: THIS DOCUMENT, INCLUDING THE DRAWING AND INFORMATION CONTAINED THEREON, IS CONFIDENTIAL AND IS THE EXCLUSIVE PROPERTY OF EATON CORPORATION, AND IS LOANED TO YOU ON LOAN AND SUBJECT TO RECALL BY EATON AT ANY TIME. BY TAKING POSSESSION OF THIS DOCUMENT, THE RECIPIENT ACKNOWLEDGES AND AGREES THAT THIS DOCUMENT CANNOT BE USED IN ANY MANNER ADVERSE TO THE INTERESTS OF EATON AND THAT NO PORTION OF THIS DOCUMENT MAY BE COPIED OR OTHERWISE REPRODUCED WITHOUT THE PRIOR WRITTEN CONSENT OF EATON. IN THE CASE OF CONFLICTING CONTRACTUAL PROVISIONS, THIS NOTICE SHALL GOVERN THE STATUS OF THIS DOCUMENT. © 2021 Eaton Corporation - All Rights Reserved.</small>				

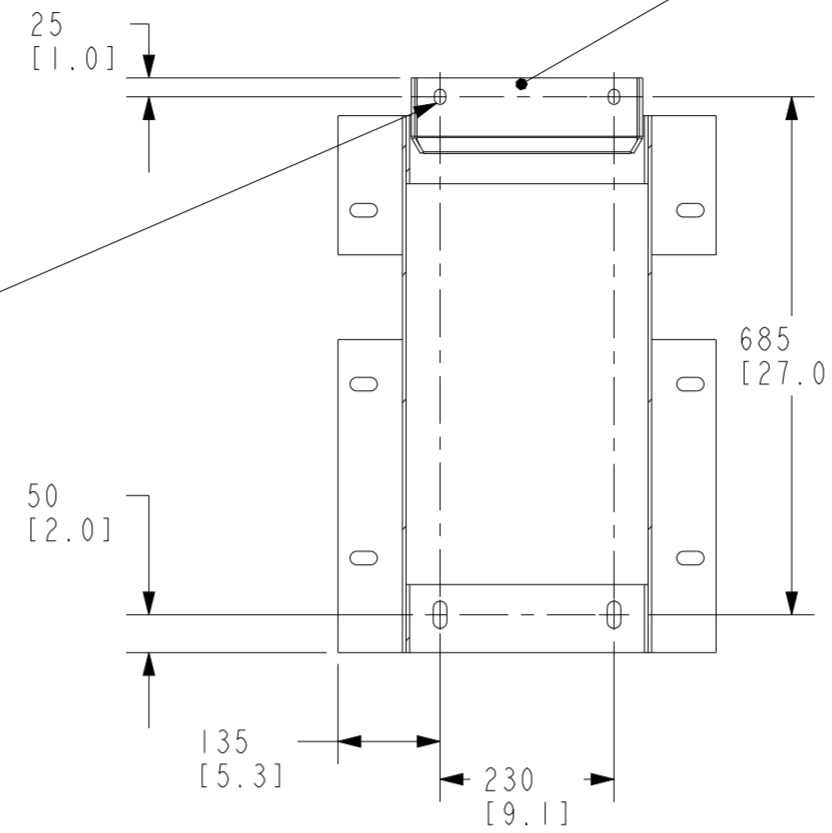
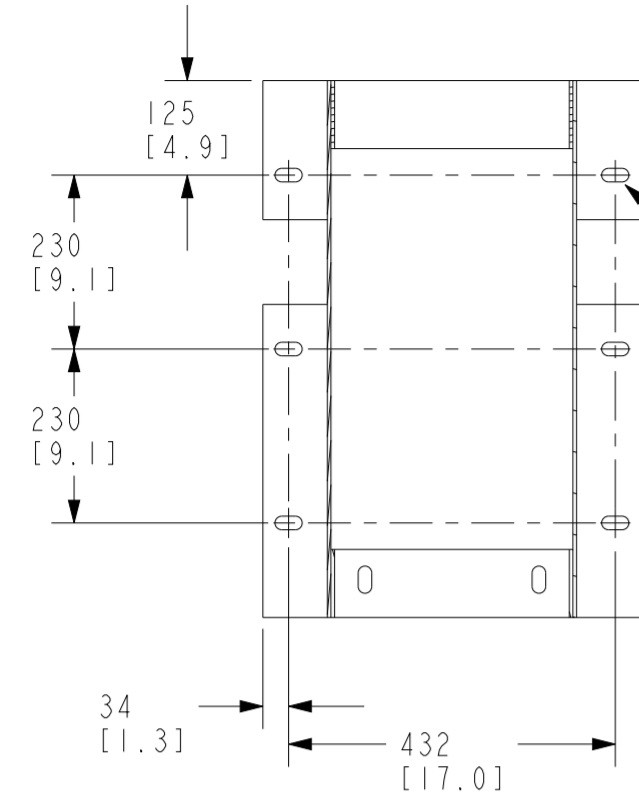
OPTION A  
TOP VIEW  
SECTION A-A

**FLOOR MOUNTING OPTIONS**

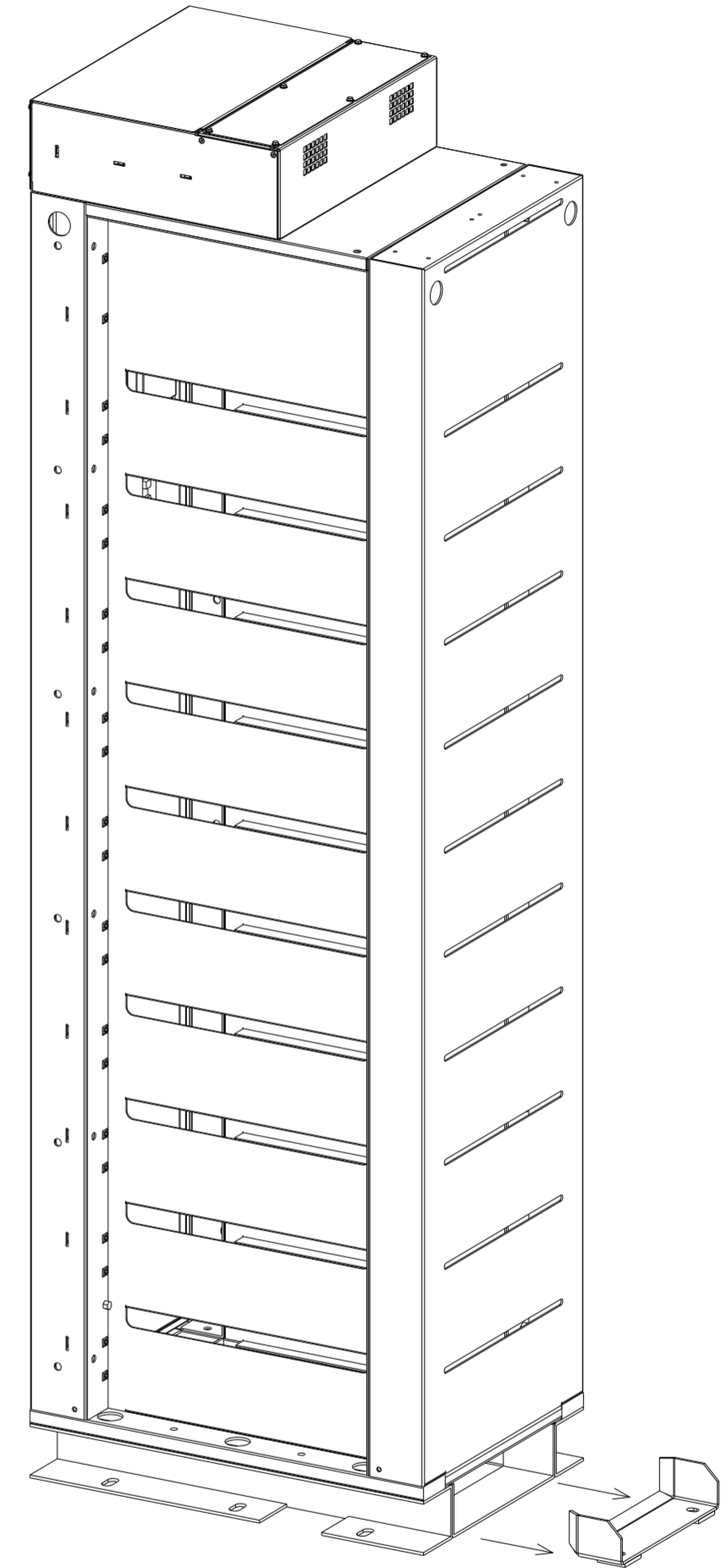
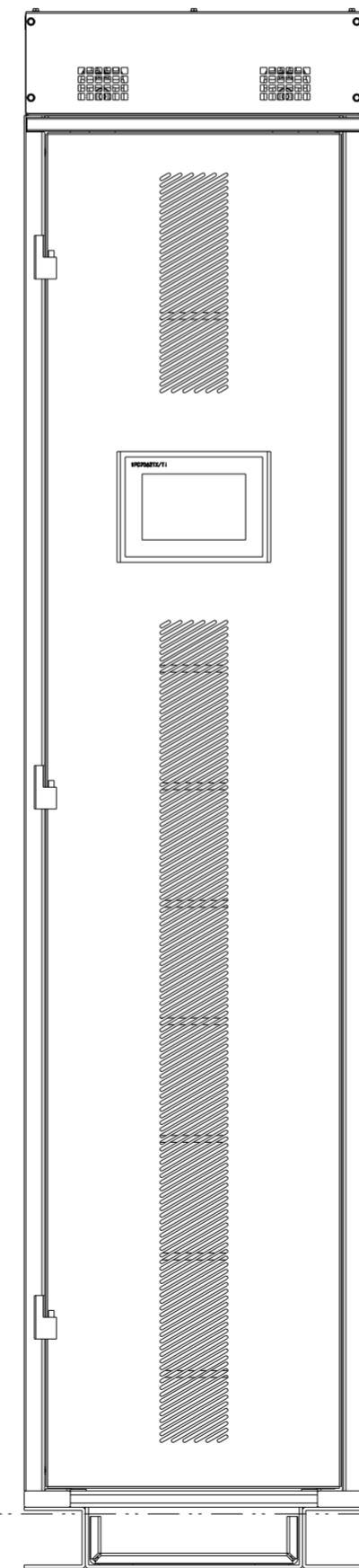
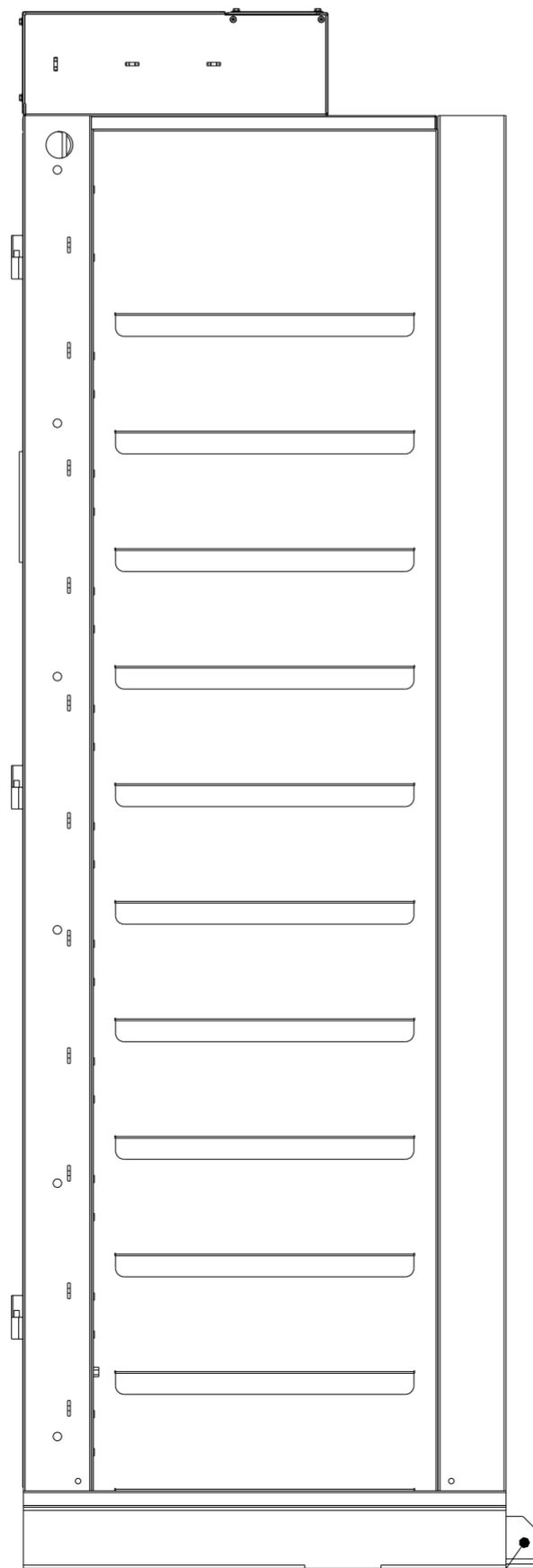
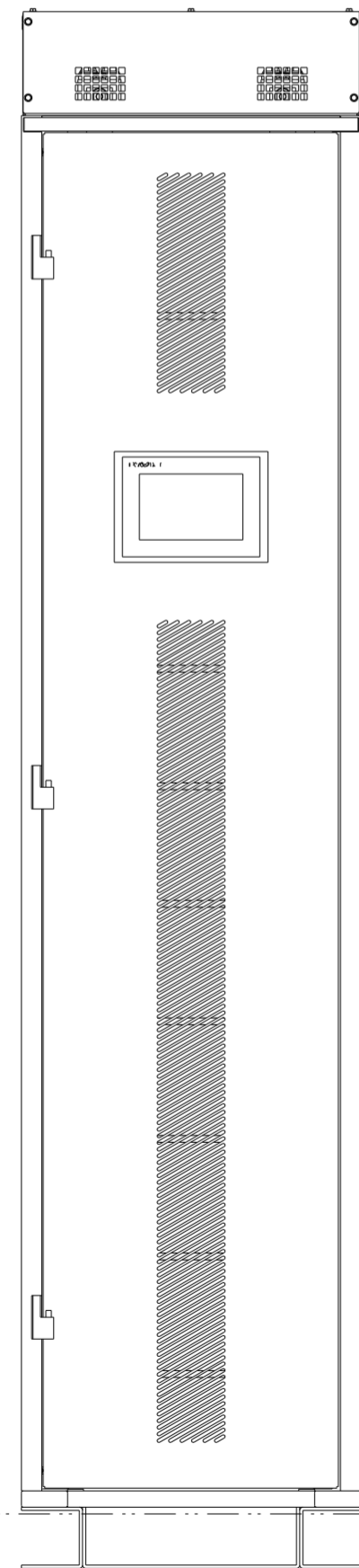
- A. WHEN SIDE ACCESS IS AVAILABLE
- B. WHEN NO REAR ACCESS OR SIDE ACCESS IS AVAILABLE  
USE OPTIONAL KIT  
P/N P-103004160

OPTION B  
TOP VIEW  
SECTION B-B

OPTIONAL FLOOR MTG  
BRACKET P-103004160  
USED IN REAR OF CABINET  
TO ALLOW SECURING THE  
REAR OF THE CABINET  
WITHOUT REQUIRING REAR  
OR SIDE ACCESS



M12 CLASS 8.8 BOLTS \*  
HEAVY DUTY FLAT WASHERS  
TORQUE 87 N·m  
\* OR  
1/2" GRADE 5  
TORQUE 64 LB-FT

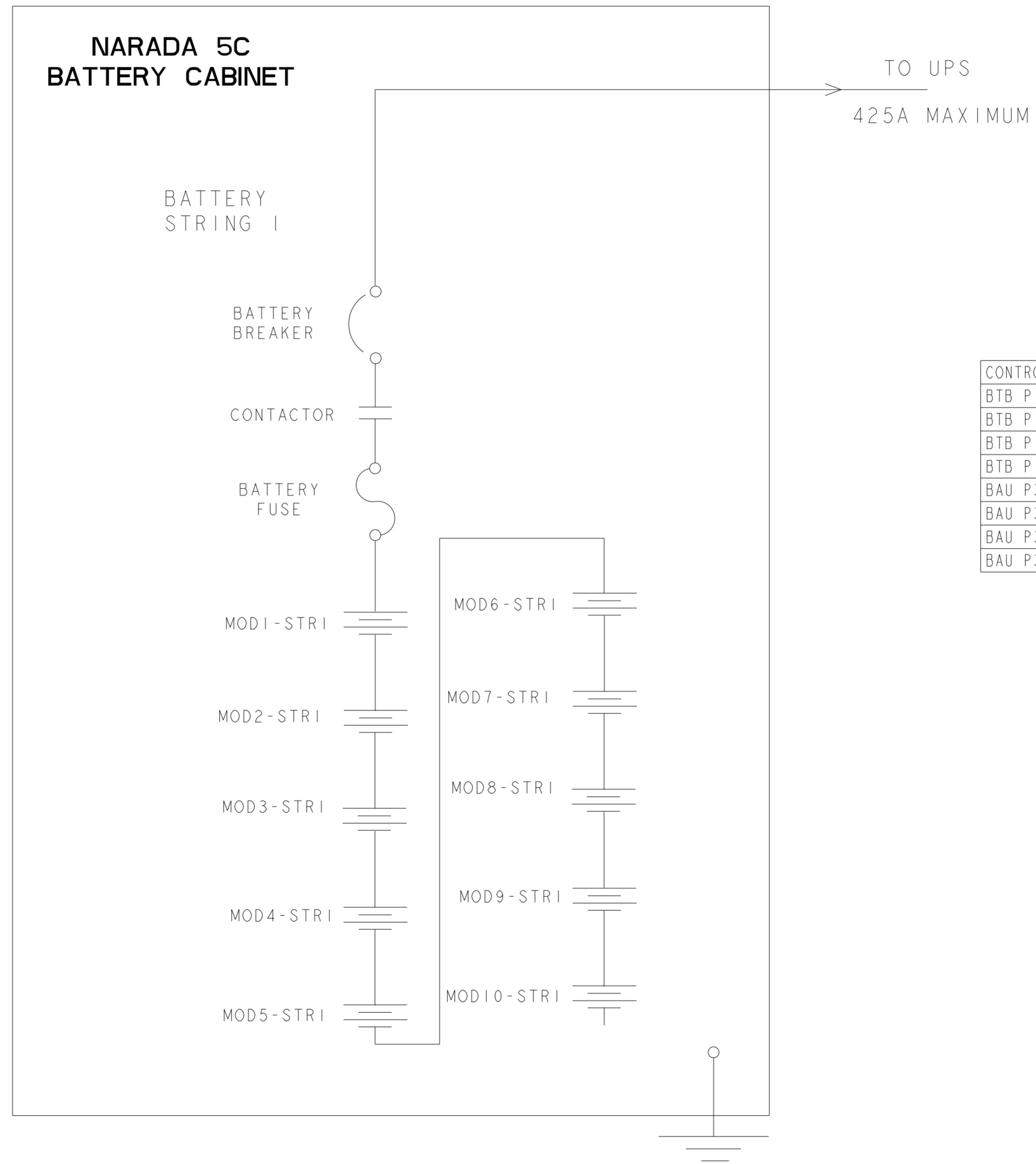


FOR METHOD B:  
SECURE FLOOR MOUNTING  
BRACKET TO FLOOR BEFORE USING A PALLET  
JACK OR FORKLIFT TO POSITION THE CABINET  
UNDER THE MOUNTING BRACKET

OPTIONAL FLOOR MTG  
BRACKET P-103004160

METRIC	THIRD ANGLE PROJECTION	NAME (PART NUMBER): P-1110000893	REVISION: 02	<b>EATON</b>
DESCRIPTION: SITE PLAN, LXP-P 5C LI-ION CABINET		SIZE: A2		
ORIGINATED BY: DOMURATH, F	06-OCT-2021	SEE NOTES FOR TOLERANCES DIM ARE IN MM (INCHES) AFTER PLATING INTERPRET DIM AND TOL PER ASME Y14.5-2018	STATE: RELEASE	SCALE: 1:10
MODIFIED BY: DOMURATH, F	27-OCT-2021		ECO: CO-0218419	SHEET: 3 OF 4
<small>EATON CORPORATION - CONFIDENTIAL AND PROPRIETARY. NOTICE TO PERSONS RECEIVING THIS DOCUMENT AND/OR TECHNICAL INFORMATION: THIS DOCUMENT, INCLUDING THE DRAWING AND INFORMATION CONTAINED THEREON, IS CONFIDENTIAL AND IS THE EXCLUSIVE PROPERTY OF EATON CORPORATION, AND IS LOANED TO YOU AND SUBJECT TO RECALL BY EATON AT ANY TIME. BY TAKING POSSESSION OF THIS DOCUMENT, THE RECIPIENT ACKNOWLEDGES AND AGREES THAT THIS DOCUMENT CANNOT BE USED IN ANY MANNER ADVERSE TO THE INTERESTS OF EATON AND THAT NO PORTION OF THIS DOCUMENT MAY BE COPIED OR OTHERWISE REPRODUCED WITHOUT THE PRIOR WRITTEN CONSENT OF EATON. IN THE CASE OF CONFLICTING CONTRACTUAL PROVISIONS, THIS NOTICE SHALL GOVERN THE STATUS OF THIS DOCUMENT. © 2021 Eaton Corporation - All Rights Reserved.</small>				

# ONE LINE DIAGRAM: CABINET, NARADA 5C 10 MODULE



CONTROL WIRING TO UPS	
BTB PIN 3	BATTERY BREAKER AUX.(N/O)
BTB PIN 4	BATTERY BREAKER AUX.COMMON
BTB PIN 3	BATTERY BREAKER UVR/ST
BTB PIN 3	BATTERY BREAKER UVR/ST RETURN
BAU P3 CONT.1	BUILDING ALARM #1
BAU P3 CONT.1 RETURN	BUILDING ALARM #1 COMMON
BAU P3 CONT.2	BUILDING ALARM #2
BAU P3 CONT.2 RETURN	BUILDING ALARM #2 COMMON

METRIC	THIRD ANGLE PROJECTION	NAME (PART NUMBER): P-1100000893	REVISION: 02	<b>EATON</b>
DESCRIPTION: SITE PLAN, LXP-P 5C LI-ION CABINET			SIZE: A2	
ORIGINATED BY: DOMURATH, F	06-OCT-2021	SEE NOTES FOR TOLERANCES DIM ARE IN MM (INCHES) AFTER PLATING INTERPRET DIM AND TOL PER ASME Y14.5-2018	STATE: RELEASE	SCALE: 1:1
MODIFIED BY: DOMURATH, F	27-OCT-2021		ECO: CO-0218419	SHEET: 4 OF 4
<small>EATON CORPORATION - CONFIDENTIAL AND PROPRIETARY. NOTICE TO PERSONS RECEIVING THIS DOCUMENT AND/OR TECHNICAL INFORMATION: THIS DOCUMENT, INCLUDING THE DRAWING AND INFORMATION CONTAINED THEREON, IS CONFIDENTIAL AND IS THE EXCLUSIVE PROPERTY OF EATON CORPORATION, AND IS LOANED TO YOU ON LOAN AND SUBJECT TO RECALL BY EATON AT ANY TIME. BY TAKING POSSESSION OF THIS DOCUMENT, THE RECIPIENT ACKNOWLEDGES AND AGREES THAT THIS DOCUMENT CANNOT BE USED IN ANY MANNER ADVERSE TO THE INTERESTS OF EATON AND THAT NO PORTION OF THIS DOCUMENT MAY BE COPIED OR OTHERWISE REPRODUCED WITHOUT THE PRIOR WRITTEN CONSENT OF EATON. IN THE CASE OF CONFLICTING CONTRACTUAL PROVISIONS, THIS NOTICE SHALL GOVERN THE STATUS OF THIS DOCUMENT. © 2021 Eaton Corporation - All Rights Reserved.</small>				