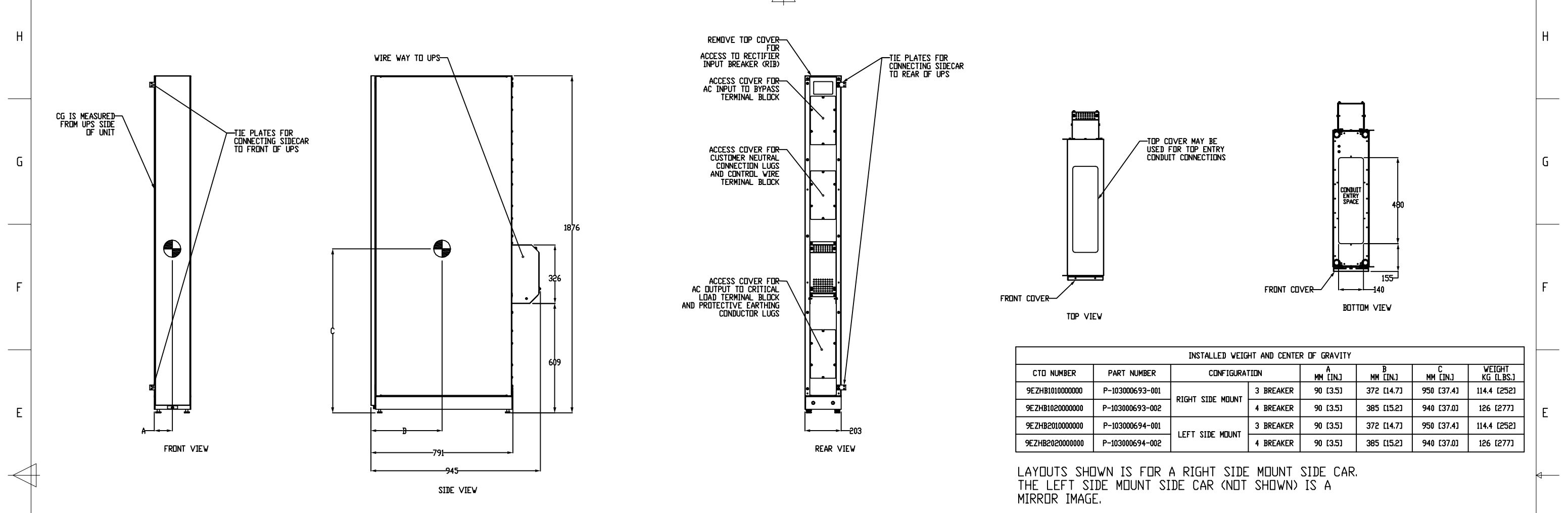


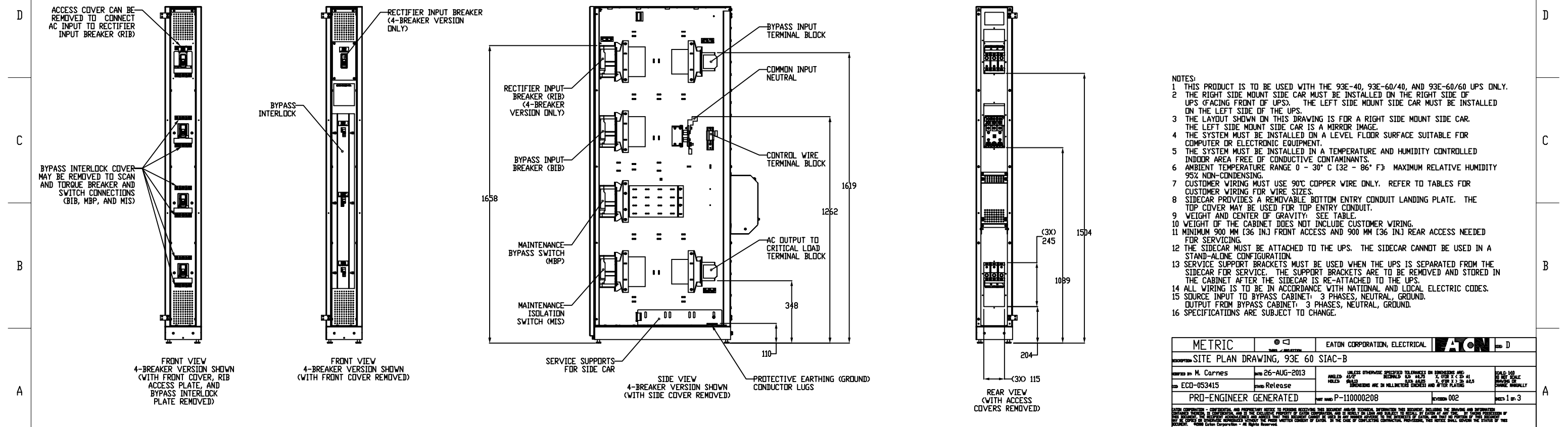
8 7 6 5 4 3 2 1



INSTALLED WEIGHT AND CENTER OF GRAVITY

CTO NUMBER	PART NUMBER	CONFIGURATION	A MM [IN.]	B MM [IN.]	C MM [IN.]	WEIGHT KG [LBS.]	
9EZH1010000000	P-103000693-001	RIGHT SIDE MOUNT	3 BREAKER	90 [3.5]	372 [14.7]	950 [37.4]	114.4 [252]
9EZH1020000000	P-103000693-002		4 BREAKER	90 [3.5]	385 [15.2]	940 [37.0]	126 [277]
9EZH2010000000	P-103000694-001	LEFT SIDE MOUNT	3 BREAKER	90 [3.5]	372 [14.7]	950 [37.4]	114.4 [252]
9EZH2020000000	P-103000694-002		4 BREAKER	90 [3.5]	385 [15.2]	940 [37.0]	126 [277]

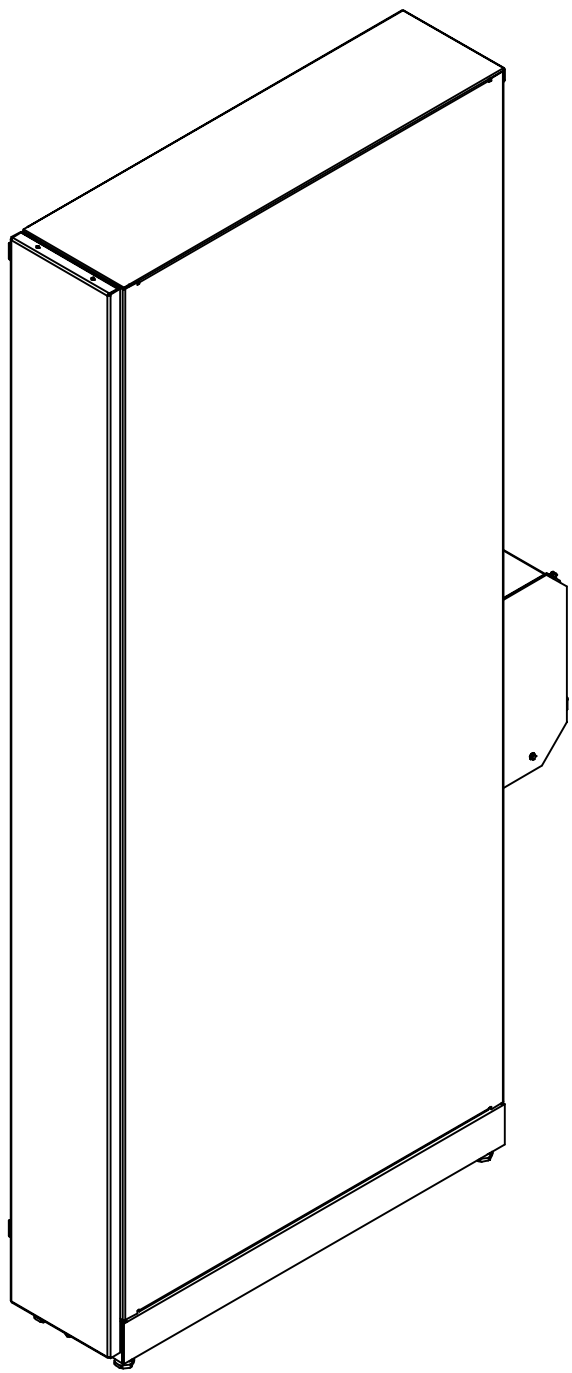
LAYOUTS SHOWN IS FOR A RIGHT SIDE MOUNT SIDE CAR. THE LEFT SIDE MOUNT SIDE CAR (NOT SHOWN) IS A MIRROR IMAGE.



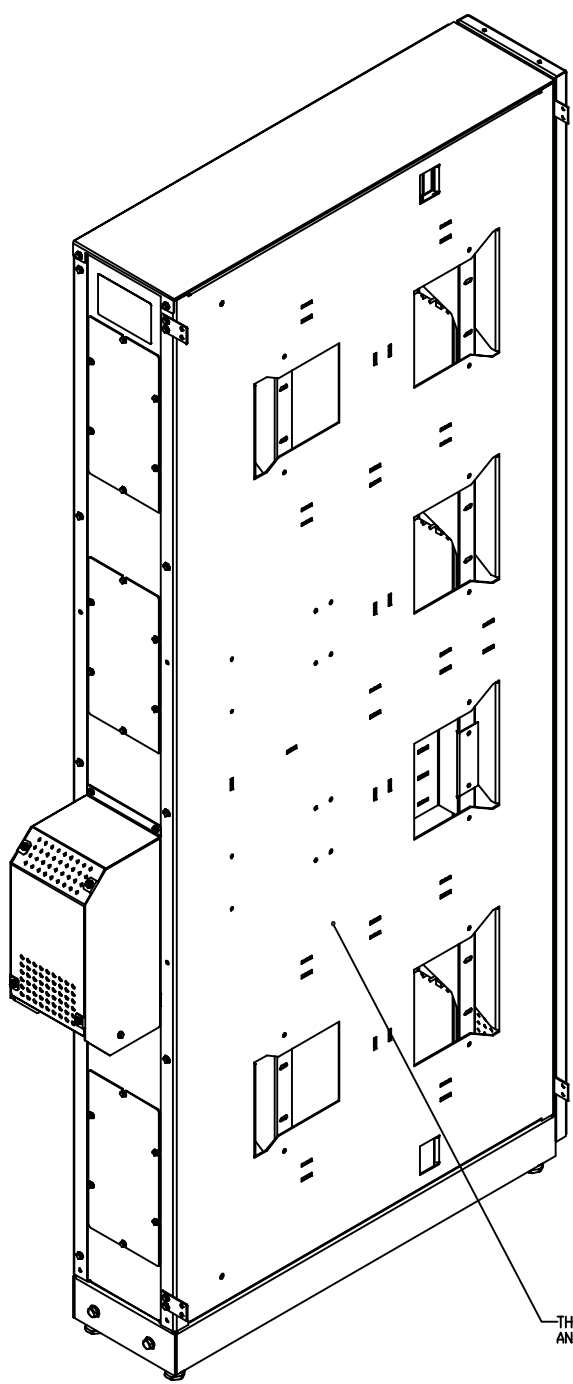
- NOTES:
- THIS PRODUCT IS TO BE USED WITH THE 93E-40, 93E-60/40, AND 93E-60/60 UPS ONLY.
 - THE RIGHT SIDE MOUNT SIDE CAR MUST BE INSTALLED ON THE RIGHT SIDE OF UPS (FACING FRONT OF UPS). THE LEFT SIDE MOUNT SIDE CAR MUST BE INSTALLED ON THE LEFT SIDE OF THE UPS.
 - THE LAYOUT SHOWN ON THIS DRAWING IS FOR A RIGHT SIDE MOUNT SIDE CAR. THE LEFT SIDE MOUNT SIDE CAR IS A MIRROR IMAGE.
 - THE SYSTEM MUST BE INSTALLED ON A LEVEL FLOOR SURFACE SUITABLE FOR COMPUTER OR ELECTRONIC EQUIPMENT.
 - THE SYSTEM MUST BE INSTALLED IN A TEMPERATURE AND HUMIDITY CONTROLLED INDOOR AREA FREE OF CONDUCTIVE CONTAMINANTS.
 - AMBIENT TEMPERATURE RANGE 0 - 30° C (32 - 86° F); MAXIMUM RELATIVE HUMIDITY 95% NON-CONDENSING.
 - CUSTOMER WIRING MUST USE 90°C COPPER WIRE ONLY. REFER TO TABLES FOR CUSTOMER WIRING FOR WIRE SIZES.
 - SIDECAR PROVIDES A REMOVABLE BOTTOM ENTRY CONDUIT LANDING PLATE. THE TOP COVER MAY BE USED FOR TOP ENTRY CONDUIT.
 - WEIGHT AND CENTER OF GRAVITY: SEE TABLE.
 - WEIGHT OF THE CABINET DOES NOT INCLUDE CUSTOMER WIRING.
 - MINIMUM 900 MM [36 IN.] FRONT ACCESS AND 900 MM [36 IN.] REAR ACCESS NEEDED FOR SERVICING.
 - THE SIDECAR MUST BE ATTACHED TO THE UPS. THE SIDECAR CANNOT BE USED IN A STAND-ALONE CONFIGURATION.
 - SERVICE SUPPORT BRACKETS MUST BE USED WHEN THE UPS IS SEPARATED FROM THE SIDECAR FOR SERVICE. THE SUPPORT BRACKETS ARE TO BE REMOVED AND STORED IN THE CABINET AFTER THE SIDECAR IS RE-ATTACHED TO THE UPS.
 - ALL WIRING IS TO BE IN ACCORDANCE WITH NATIONAL AND LOCAL ELECTRIC CODES.
 - SOURCE INPUT TO BYPASS CABINET: 3 PHASES, NEUTRAL, GROUND. OUTPUT FROM BYPASS CABINET: 3 PHASES, NEUTRAL, GROUND.
 - SPECIFICATIONS ARE SUBJECT TO CHANGE.

METRIC		EATON CORPORATION, ELECTRICAL		EATON	
SITE PLAN DRAWING, 93E 60 SIAC-B					
DESIGNED BY M. Carnes	DATE 26-AUG-2013	UNLESS OTHERWISE SPECIFIED TOLERANCES ON DIMENSIONS AND ANGLES ARE:	AS SHOWN	SCALE 1:10	DATE 26-AUG-2013
NO. ECD-053415	REV. 002	UNLESS OTHERWISE SPECIFIED TOLERANCES ON DIMENSIONS AND ANGLES ARE:	AS SHOWN	SCALE 1:10	DATE 26-AUG-2013
PRO-ENGINEER GENERATED		REV. 002		PAGE 1 OF 3	

8 7 6 5 4 3 2 1



ISD VIEW
RIGHT FRONT
RIGHT SIDE MOUNT SIDE CAR SHOWN
SCALE 1/5



ISD VIEW
LEFT REAR
RIGHT SIDE MOUNT SIDE CAR SHOWN
SCALE 1/5

THIS PANEL IS UN-PAINTED AND MUST BE PLACED AGAINST UPS

PRODUCT SPECIFICATIONS							
BYPASS CABINET RATING		AC INPUT VOLTAGE	AC OUTPUT VOLTAGE	RECTIFIER AC INPUT CURRENT	INVERTER AC OUTPUT CURRENT	BYPASS AC INPUT VOLTAGE	BYPASS AC INPUT CURRENT
KVA	CONFIGURATION	VAC	VAC	AMP	AMP	VAC	AMP
60	3-BREAKER	208Y/120	208Y/120	185	167	N/A	N/A
60	4-BREAKER	208Y/120	208Y/120	185	167	208Y/120	167

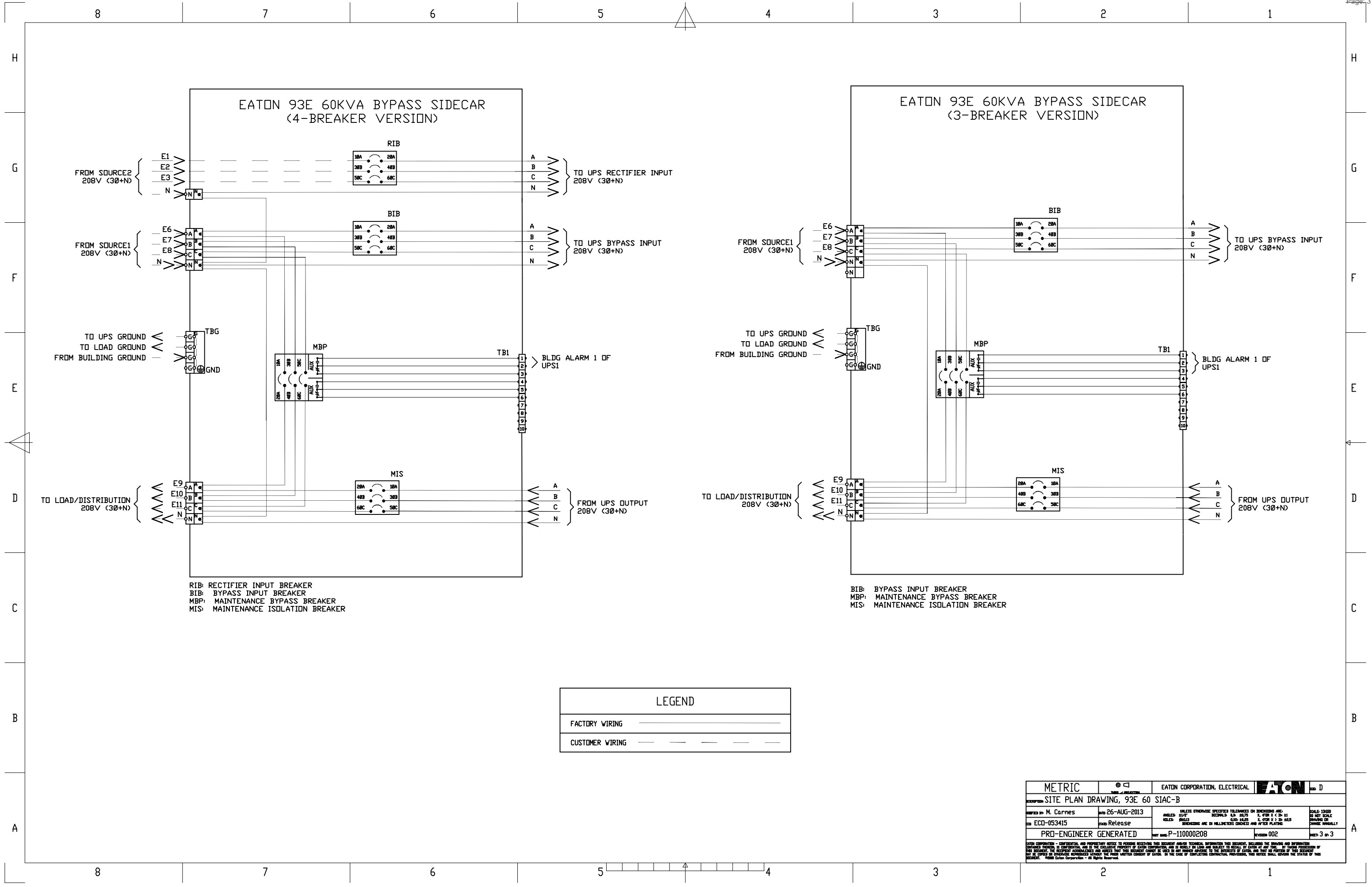
NOTE: FOR THE 3-BREAKER SIDE CAR APPLICATIONS, UPS RECTIFIER AC INPUT AND UPS BYPASS AC INPUT ARE INTERNALLY JUMPED AT THE UPS.

CUSTOMER WIRING (3 BREAKER CONFIGURATION)					
WIRES		ACCEPTED WIRE RANGE	TORQUE RATING * N*m (L.B.#In)	SCREW SIZE AND TYPE	RECOMMENDED MINIMUM WIRE SIZE ** (QTY) & WIRE SIZE
AC INPUT (BIB)	PHASE WIRES	6 AWG TO 500 MCM	56.5 (500)	1/2" HEX SOCKET	(1) 250 MCM
	NEUTRAL	6 AWG TO 300 MCM	31.0 (275)	5/16" HEX SOCKET	(1) 250 MCM
	PROTECTIVE EARTHING (GROUND)	14 AWG TO 1/0	5.6 (50)	SLOTTED SCREW	(1) 2 AWG
AC OUTPUT TO CRITICAL LOAD	PHASE WIRES	6 AWG TO 500 MCM	56.5 (500)	1/2" HEX SOCKET	(1) 250 MCM
	NEUTRAL	6 AWG TO 300 MCM	31.0 (275)	5/16" HEX SOCKET	(1) 250 MCM
	PROTECTIVE EARTHING (GROUND)	14 AWG TO 1/0	5.6 (50)	SLOTTED SCREW	(1) 2 AWG

* REFER TO UPS MANUAL FOR TORQUE CONNECTIONS TO UPS
** USE 90°C COPPER CONDUCTOR WIRE ONLY

CUSTOMER WIRING (4 BREAKER CONFIGURATION)					
WIRES		ACCEPTED WIRE RANGE	TORQUE RATING * N*m (L.B.#In)	SCREW SIZE AND TYPE	RECOMMENDED MINIMUM WIRE SIZE ** (QTY) & WIRE SIZE
RECTIFIER INPUT (RIB)	PHASE WIRES	4 AWG TO 350 MCM	20 (177)	5/16" HEX SOCKET	(1) 250 MCM
	NEUTRAL	6 AWG TO 300 MCM	31.0 (275)	5/16" HEX SOCKET	(1) 250 MCM
	PROTECTIVE EARTHING (GROUND)	14 AWG TO 1/0	5.6 (50)	SLOTTED SCREW	(1) 2 AWG
BYPASS INPUT (BIB)	PHASE WIRES	6 AWG TO 500 MCM	56.5 (500)	1/2" HEX SOCKET	(1) 250 MCM
	NEUTRAL	6 AWG TO 300 MCM	31.0 (275)	5/16" HEX SOCKET	(1) 250 MCM
	PROTECTIVE EARTHING (GROUND)	14 AWG TO 1/0	5.6 (50)	SLOTTED SCREW	(1) 2 AWG
AC OUTPUT TO CRITICAL LOAD	PHASE WIRES	6 AWG TO 500 MCM	56.5 (500)	1/2" HEX SOCKET	(1) 250 MCM
	NEUTRAL	6 AWG TO 300 MCM	31.0 (275)	5/16" HEX SOCKET	(1) 250 MCM
	PROTECTIVE EARTHING (GROUND)	14 AWG TO 1/0	5.6 (50)	SLOTTED SCREW	(1) 2 AWG

METRIC	EATON CORPORATION, ELECTRICAL	EATON	REV D
SITE PLAN DRAWING, 93E 60 SIAC-B			
DESIGNED BY M. Carnes	DATE 26-AUG-2013	UNLESS OTHERWISE SPECIFIED TOLERANCES ON DIMENSIONS ARE: MILLED SURF 0.125 1/16 0.025 1/32 0.015 1/64 0.0075 1/128 HOLE 0.015 1/64 0.0075 1/128 DIMENSIONS ARE IN MILLIMETERS UNLESS OTHERWISE SPECIFIED	SCALE 2:25 SEE MET SCALE DIMENSIONS FOR CHANGE OR CHANGE MANUALLY
ECO-053415	REV Release	PRO-ENGINEER GENERATED	REVISED 002
NET P-110000208		SHEET 2 OF 3	



RIB: RECTIFIER INPUT BREAKER
 BIB: BYPASS INPUT BREAKER
 MBP: MAINTENANCE BYPASS BREAKER
 MIS: MAINTENANCE ISOLATION BREAKER

BIB: BYPASS INPUT BREAKER
 MBP: MAINTENANCE BYPASS BREAKER
 MIS: MAINTENANCE ISOLATION BREAKER

LEGEND	
FACTORY WIRING	—————
CUSTOMER WIRING	- - - - -

METRIC	EATON CORPORATION, ELECTRICAL	EATON
SITE PLAN DRAWING, 93E 60 SIAC-B		
DESIGNED BY M. Carnes	DATE 26-AUG-2013	SCALE 1:1000
NO. ECD-053415	STATUS Release	BY M. Carnes
PRO-ENGINEER GENERATED	REV. NO. P-110000208	REV. 002
EATON CORPORATION - CONFIDENTIAL AND PROPRIETARY NOTICE TO PERSONS RECEIVING THIS DOCUMENT UNDER TECHNICAL ASSISTANCE: THIS DOCUMENT IS THE PROPERTY OF EATON CORPORATION AND IS LOANED TO YOU SUBJECT TO THE TERMS OF THE ASSISTANCE AGREEMENT. IT IS NOT TO BE REPRODUCED OR TRANSMITTED IN ANY FORM OR BY ANY MEANS, ELECTRONIC OR MECHANICAL, INCLUDING PHOTOCOPYING, RECORDING, OR BY ANY INFORMATION STORAGE AND RETRIEVAL SYSTEM, WITHOUT THE WRITTEN CONSENT OF EATON. IN THE CASE OF CONFLICTING CONTRACTUAL PROVISIONS, THIS NOTICE SHALL GOVERN THE STATUS OF THIS DOCUMENT. © 2013 Eaton Corporation - All Rights Reserved.		