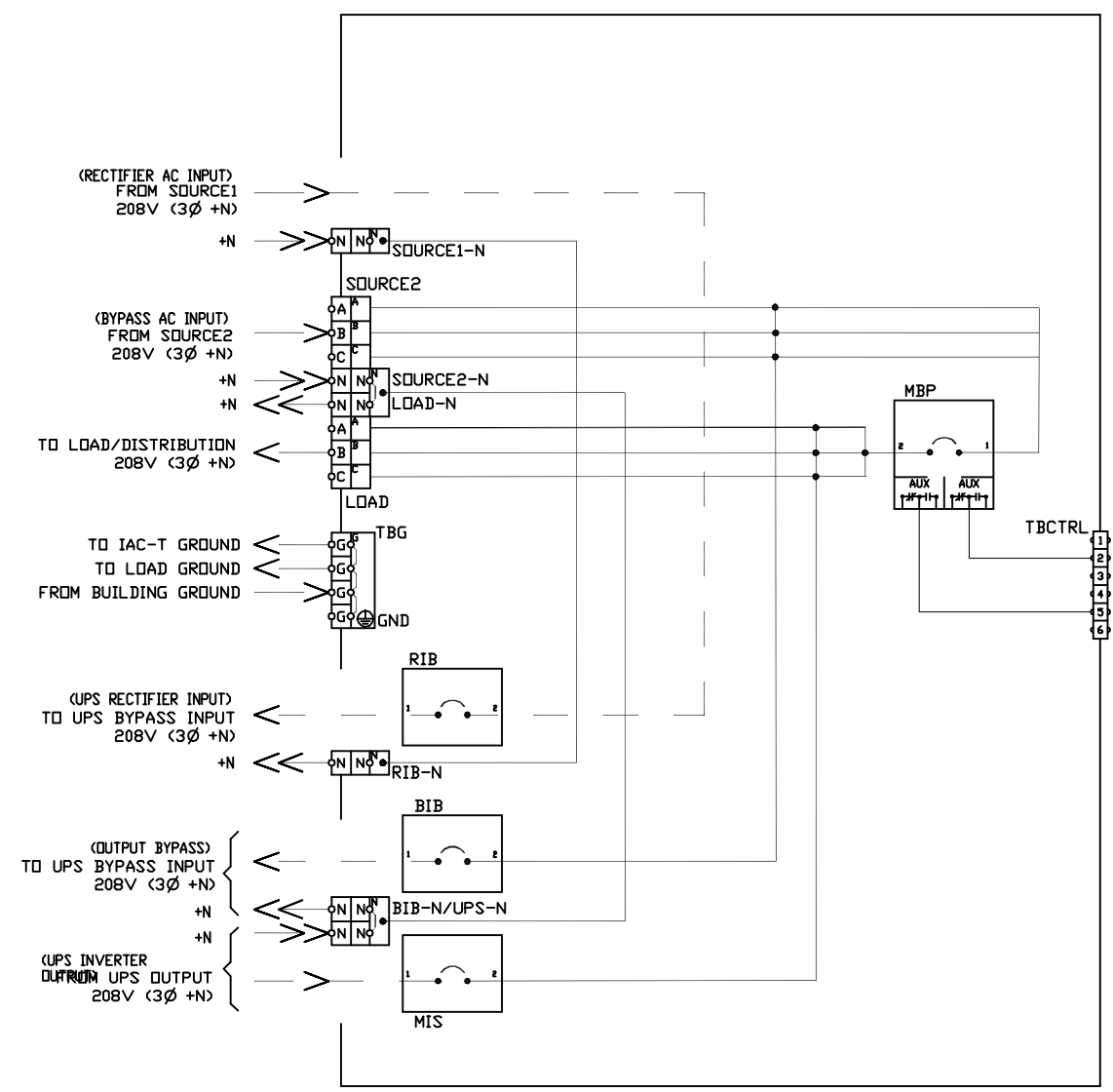
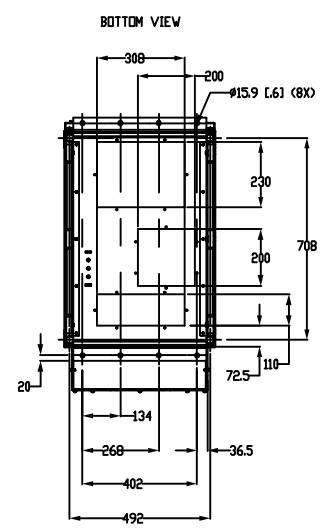
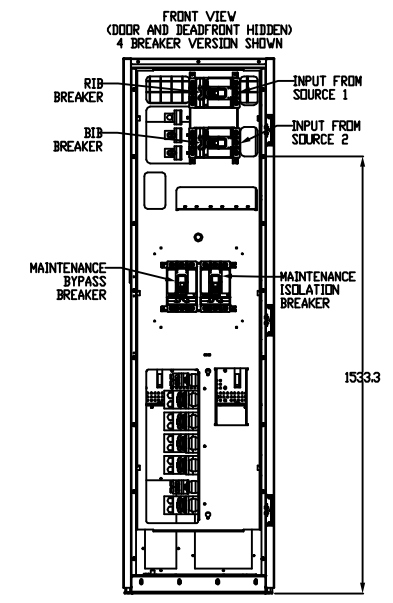
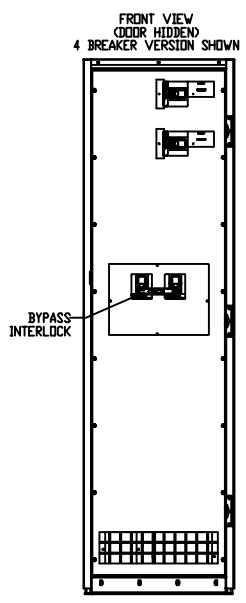
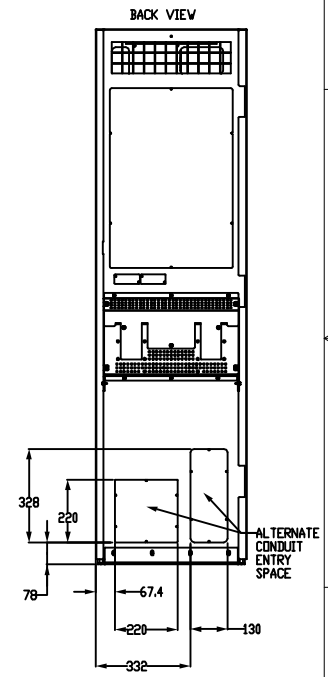
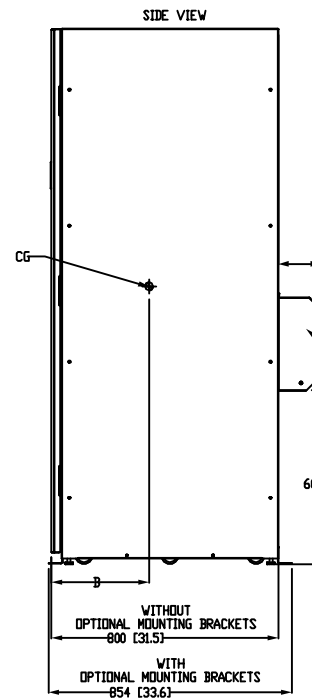
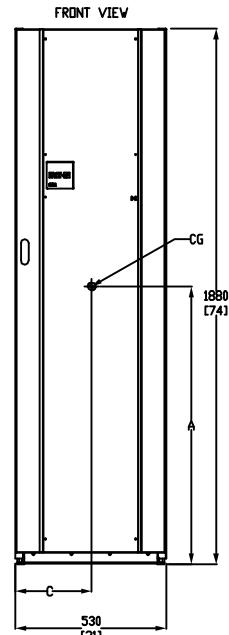
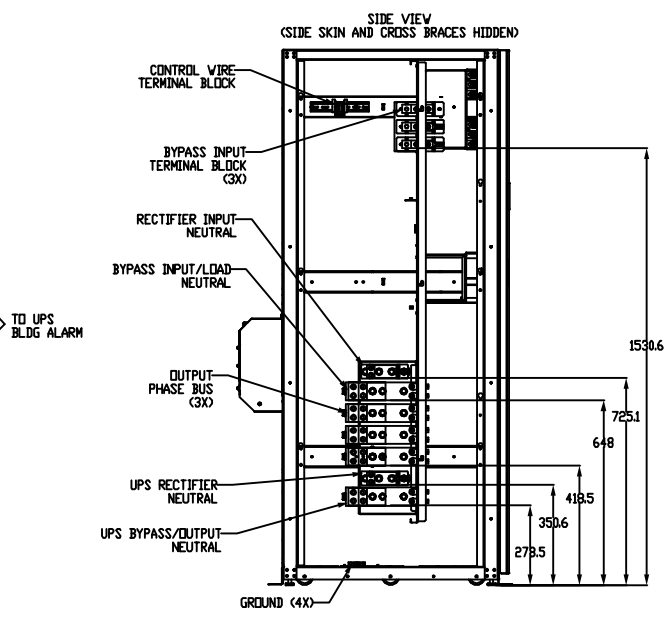
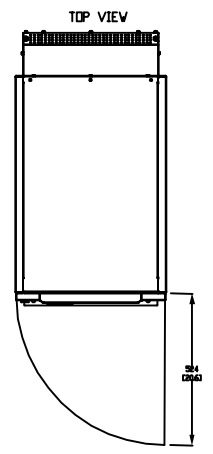


# EATON 93E 30/60 IAC-B (4-Breaker Version)



RIB: RECTIFIER INPUT BREAKER  
 BIB: BYPASS INPUT BREAKER  
 MBP: MAINTENANCE BYPASS BREAKER  
 MIS: MAINTENANCE ISOLATION BREAKER



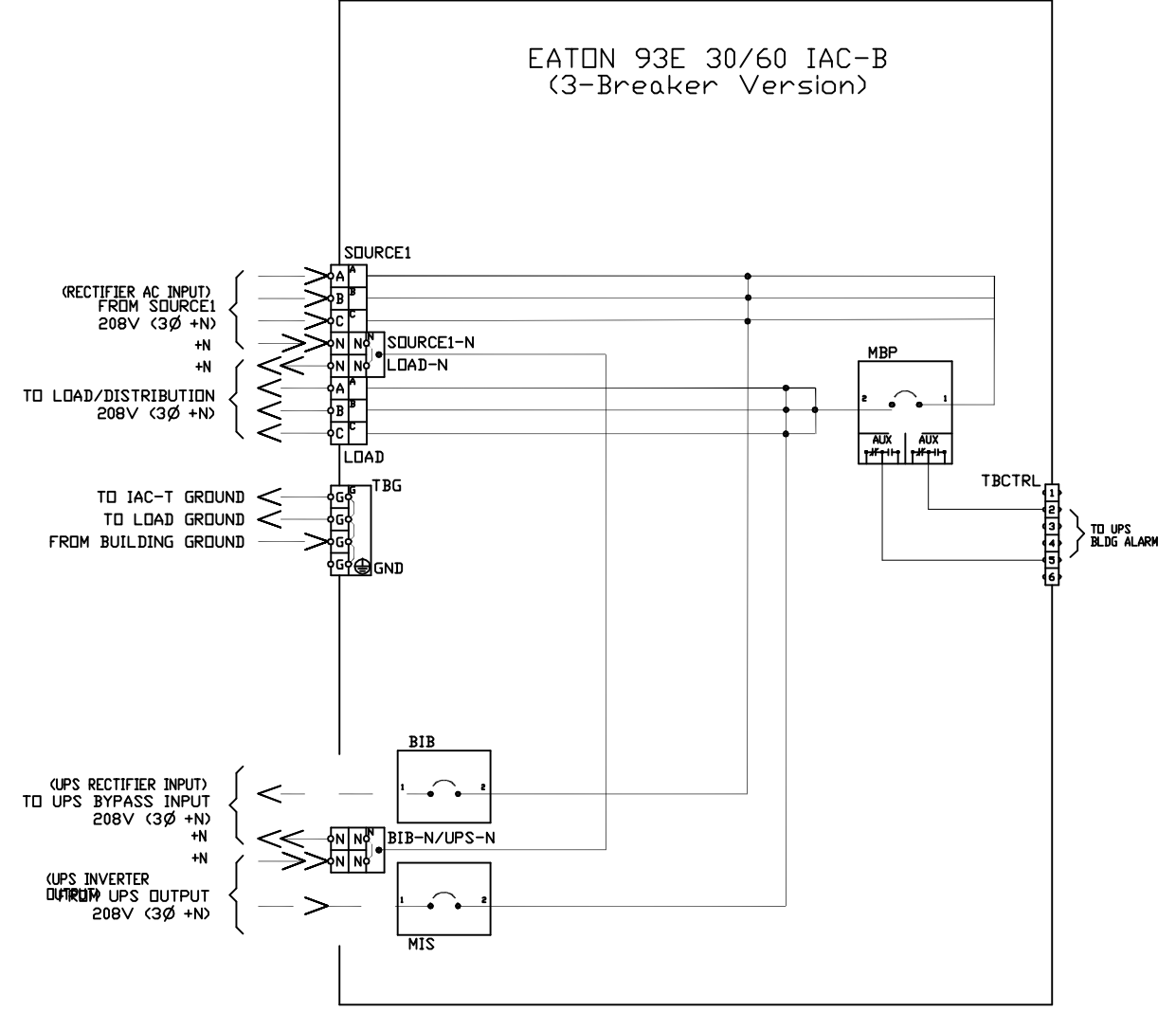
- NOTES:
- FOR OPTIONAL MOUNTING BRACKETS USE SHIPPING BRACKETS. INSTALLED HEIGHT WITH MOUNTING BRACKETS IS 1876 MM (73.85").
  - WEIGHT AND CENTER OF GRAVITY: SEE TABLE.
  - THE SYSTEM MUST BE INSTALLED IN A TEMPERATURE AND HUMIDITY CONTROLLED INDOOR AREA FREE OF CONDUCTIVE CONTAMINANTS.
  - AMBIENT TEMPERATURE RANGE 0 - 30° C (32 - 86° F); MAXIMUM RELATIVE HUMIDITY 95% NON-CONDENSING.
  - MINIMUM 900 MM (36 IN.) FRONT ACCESS AND 900 MM (36 IN.) REAR ACCESS NEEDED FOR SERVICING.
  - MINIMUM 200 MM (8 IN.) CLEARANCE IN FRONT IS NEEDED FOR DOOR SWING.
  - THE ACCESSORY CABINET CAN BE INSTALLED IN A LINE-UP-AND-MATCH OR STANDALONE CONFIGURATION.
  - SHIPPING BRACKETS MUST REMAIN INSTALLED WHEN THE ACCESSORY CABINET IS USED IN A STANDALONE CONFIGURATION. CABINET TIE BRACKETS MUST BE INSTALLED WHEN THE ACCESSORY CABINET IS USED IN A LINE-UP-AND-MATCH CONFIGURATION.
  - BOTTOM OR REAR CABLE ENTRY THROUGH REMOVABLE CONDUIT LANDING PLATES.
  - ALL WIRING IS TO BE IN ACCORDANCE WITH NATIONAL AND LOCAL ELECTRIC CODES.
  - SOURCE INPUT TO BYPASS CABINET: 3 PHASES, NEUTRAL, GROUND. OUTPUT FROM BYPASS CABINET: 3 PHASES, NEUTRAL, GROUND.
  - SPECIFICATIONS ARE SUBJECT TO CHANGE.

METRIC		EATON CORPORATION, ELECTRICAL		EATON	
SITE PLAN DRAWING, 93E 60 IAC-B					
DESIGNED BY M. Carnes	DATE 26-AUG-2013	UNLESS OTHERWISE SPECIFIED TOLERANCES ARE:	SCALE: 205	BY MIT SCALE	
NO. ECD-053415	ISSUE Release	ANGLES: 5/16"	DECIMALS: 0.0, 0.25, 0.5, 0.75, 1.0, 1.5, 2.0, 3.0, 4.0, 5.0, 6.0, 7.0, 8.0, 9.0, 10.0	DIMENSIONS ARE IN MILLIMETERS UNLESS OTHERWISE SPECIFIED	
PRO-ENGINEER GENERATED		REV AND P-110000033	REVISION 005	SHEET 1 OF 2	

WEIGHT AND CENTER OF GRAVITY				
	A	B	C	WEIGHT
	MM (IN.)	MM (IN.)	MM (IN.)	KG (LBS.)
4 BREAKER CONFIGURATION	973 (38)	342.6 (13)	268.3 (11)	151 (334)

PRODUCT SPECIFICATIONS							
BYPASS CABINET RATING		AC INPUT VOLTAGE	AC OUTPUT VOLTAGE	RECTIFIER AC INPUT CURRENT	INVERTER AC OUTPUT CURRENT	BYPASS AC INPUT VOLTAGE	BYPASS AC INPUT CURRENT
KVA	NUMBER OF BREAKERS	VAC	VAC	NAMEPLATE AMP	NAMEPLATE AMP	NAMEPLATE AMP	NAMEPLATE AMP
60	3	208Y/120	208Y/120	185	167	N/A	N/A
60	4	208Y/120	208Y/120	167	167	208Y/120	185

EATON 93E 30/60 IAC-B  
(3-Breaker Version)



BIB: BYPASS INPUT BREAKER  
MBP: MAINTENANCE BYPASS BREAKER  
MIS: MAINTENANCE ISOLATION BREAKER

CUSTOMER WIRING (3 BREAKER CONFIGURATION)				
WIRES	ACCEPTED WIRE RANGE	TORQUE RATING	RECOMMENDED MINIMUM WIRE SIZE FOR 90 DEG C COPPER STRANDED WIRE	
		Nm (L.B.#In)	3 BREAKER CONFIGURATION	
PHASE WIRES	RECTIFIER AC INPUT	5.6 (50)	250 MCM	
	UPS INVERTER OUTPUT	5.6 (50)	250 MCM	
NEUTRAL WIRE	RECTIFIER AC INPUT	42 (375)	(2) 250 MCM	
	UPS INVERTER OUTPUT	56 (500)	(2) 250 MCM	
UPS RECTIFIER INPUT PHASE WIRES		5.6 (50)	250 MCM	
UPS RECTIFIER INPUT NEUTRAL WIRE		56 (500)	(2) 250 MCM	
OUTPUT PHASE WIRES		56 (500)	250 MCM	
OUTPUT NEUTRAL WIRE		56 (500)	(2) 250 MCM	
GROUND WIRE		5.6 (50)	2 AWG	

CUSTOMER WIRING (4 BREAKER CONFIGURATION)				
WIRES	ACCEPTED WIRE RANGE	TORQUE RATING	RECOMMENDED MINIMUM WIRE SIZE FOR 90 DEG C COPPER STRANDED WIRE	
		Nm (L.B.#In)	4 BREAKER CONFIGURATION	
INPUT PHASE WIRES	RECTIFIER AC INPUT	5.6 (50)	250 MCM	
	BYPASS AC INPUT	42 (375)	250 MCM	
	UPS INVERTER OUTPUT	5.6 (50)	250 MCM	
INPUT NEUTRAL WIRE	RECTIFIER AC INPUT	31 (275)	(2) 250 MCM	
	BYPASS AC INPUT	56 (500)	(2) 250 MCM	
	UPS INVERTER OUTPUT	56 (500)	(2) 250 MCM	
UPS RECTIFIER INPUT PHASE WIRES		5.6 (50)	250 MCM	
UPS RECTIFIER INPUT NEUTRAL WIRES		31 (275)	(2) 250 MCM	
OUTPUT BYPASS PHASE WIRES		5.6 (50)	250 MCM	
OUTPUT BYPASS NEUTRAL WIRES		56 (500)	(2) 250 MCM	
OUTPUT PHASE WIRES		56 (500)	250 MCM	
OUTPUT NEUTRAL WIRE		56 (500)	(2) 250 MCM	
GROUND WIRES		5.6 (50)	2 AWG	

METRIC	EATON CORPORATION, ELECTRICAL	<b>EATON</b> INC. D
SITE PLAN DRAWING, 93E 60 IAC-B		
DESIGNED BY M. Carnes	DATE 26-AUG-2013	SCALE 200
NO. ECD-053415	STATUS Release	NO. 005
PRO-ENGINEER GENERATED		NO. P-110000033
<small>EATON CORPORATION - CONFIDENTIAL AND PROPRIETARY. ALL RIGHTS RESERVED. INFORMATION IS PROVIDED AS IS WITHOUT WARRANTY OF ANY KIND, INCLUDING MERCHANTABILITY AND FITNESS FOR A PARTICULAR PURPOSE. THE USER SHALL ACCEPT THE STATUS OF THIS DOCUMENT. © 2013 Eaton Corporation. All rights reserved.</small>		