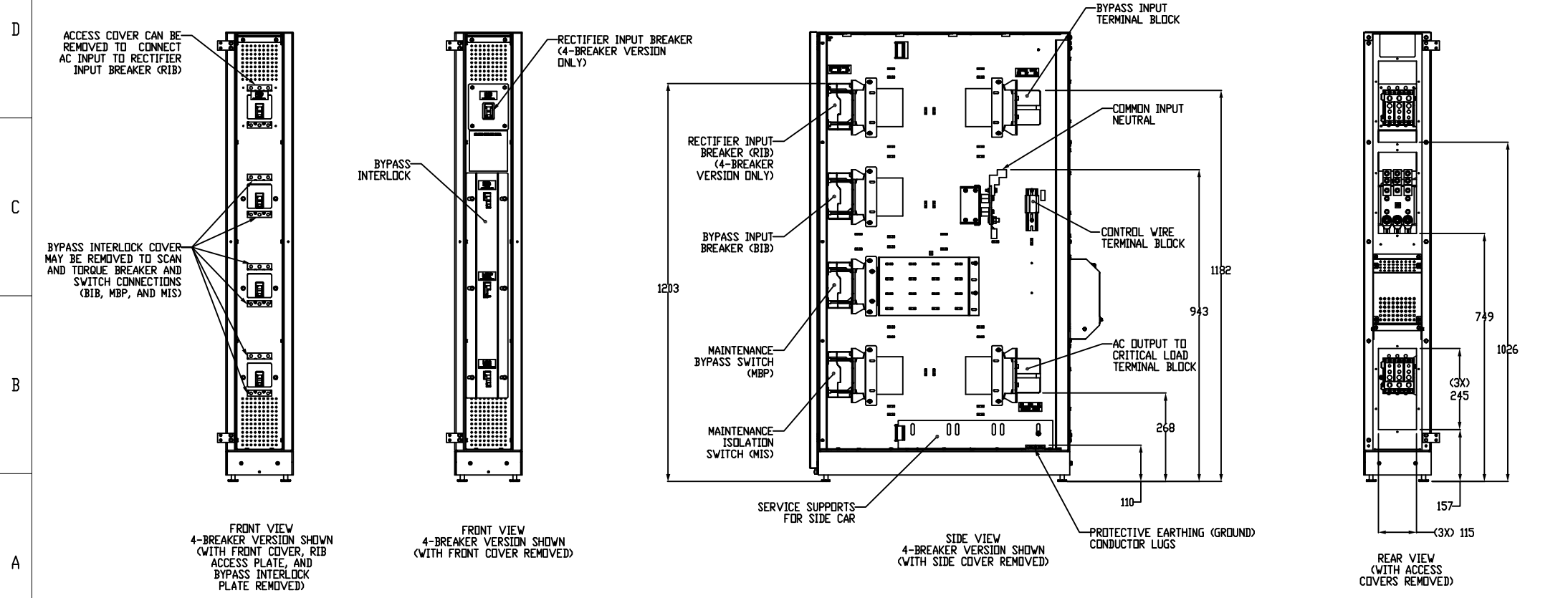


INSTALLED WEIGHT AND CENTER OF GRAVITY

CTO NUMBER	PART NUMBER	CONFIGURATION	A MM [IN.]	B MM [IN.]	C MM [IN.]	WEIGHT KG [LBS.]	
9EZHA1010000000	P-103000570-001	RIGHT SIDE MOUNT	3 BREAKER	92 [3.6]	368 [14.5]	696 [27.4]	75.0 [165]
9EZHA1020000000	P-103000570-002		4 BREAKER	92 [3.6]	368 [14.5]	690 [27.2]	80.9 [178]
9EZHA2010000000	P-103000571-001	LEFT SIDE MOUNT	3 BREAKER	92 [3.6]	368 [14.5]	696 [27.4]	75.0 [165]
9EZHA2020000000	P-103000571-002		4 BREAKER	92 [3.6]	368 [14.5]	690 [27.2]	80.9 [178]

LAYOUTS SHOWN IS FOR A RIGHT SIDE MOUNT SIDE CAR. THE LEFT SIDE MOUNT SIDE CAR (NOT SHOWN) IS A MIRROR IMAGE.

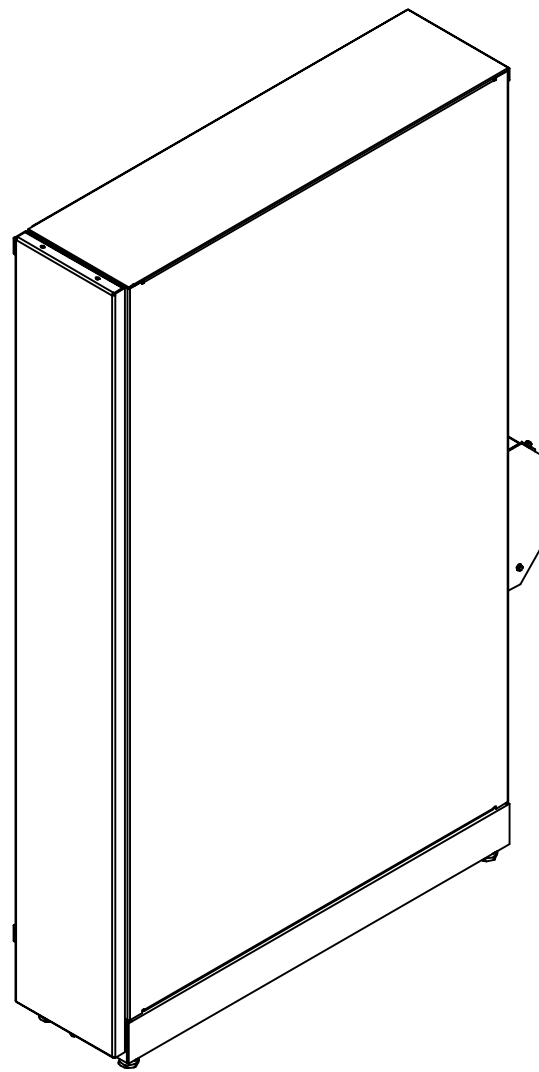


- NOTES:
- THIS PRODUCT IS TO BE USED WITH THE 93E-20, 93E-30/20, AND 93E-30/30, 9E-20, 9E-30/20, AND 9E-30/30 UPS ONLY.
 - THE RIGHT SIDE MOUNT SIDE CAR MUST BE INSTALLED ON THE RIGHT SIDE OF UPS (FACING FRONT OF UPS). THE LEFT SIDE MOUNT SIDE CAR MUST BE INSTALLED ON THE LEFT SIDE OF THE UPS.
 - THE LAYOUT SHOWN ON THIS DRAWING IS FOR A RIGHT SIDE MOUNT SIDE CAR. THE LEFT SIDE MOUNT SIDE CAR IS A MIRROR IMAGE.
 - THE SYSTEM MUST BE INSTALLED ON A LEVEL FLOOR SURFACE SUITABLE FOR COMPUTER OR ELECTRONIC EQUIPMENT.
 - THE SYSTEM MUST BE INSTALLED IN A TEMPERATURE AND HUMIDITY CONTROLLED INDOOR AREA FREE OF CONDUCTIVE CONTAMINANTS.
 - AMBIENT TEMPERATURE RANGE 0 - 30° C (32 - 86° F); MAXIMUM RELATIVE HUMIDITY 95% NON-CONDENSING.
 - CUSTOMER WIRING MUST USE 90°C COPPER WIRE ONLY. REFER TO TABLES FOR CUSTOMER WIRING FOR WIRE SIZES.
 - SIDECAR PROVIDES A REMOVABLE BOTTOM ENTRY CONDUIT LANDING PLATE. THE TOP COVER MAY BE USED FOR TOP ENTRY CONDUIT.
 - WEIGHT AND CENTER OF GRAVITY: SEE TABLE.
 - WEIGHT OF THE CABINET DOES NOT INCLUDE CUSTOMER WIRING.
 - MINIMUM 900 MM [36 IN.] FRONT ACCESS AND 900 MM [36 IN.] REAR ACCESS NEEDED FOR SERVICING.
 - THE SIDECAR MUST BE ATTACHED TO THE UPS. THE SIDECAR CANNOT BE USED IN A STAND-ALONE CONFIGURATION.
 - SERVICE SUPPORT BRACKETS MUST BE USED WHEN THE UPS IS SEPARATED FROM THE SIDECAR FOR SERVICE. THE SUPPORT BRACKETS ARE TO BE REMOVED AND STORED IN THE CABINET AFTER THE SIDECAR IS RE-ATTACHED TO THE UPS.
 - ALL WIRING IS TO BE IN ACCORDANCE WITH NATIONAL AND LOCAL ELECTRIC CODES.
 - SOURCE INPUT TO BYPASS CABINET: 3 PHASES, NEUTRAL, GROUND. OUTPUT FROM BYPASS CABINET: 3 PHASES, NEUTRAL, GROUND.
 - SPECIFICATIONS ARE SUBJECT TO CHANGE.

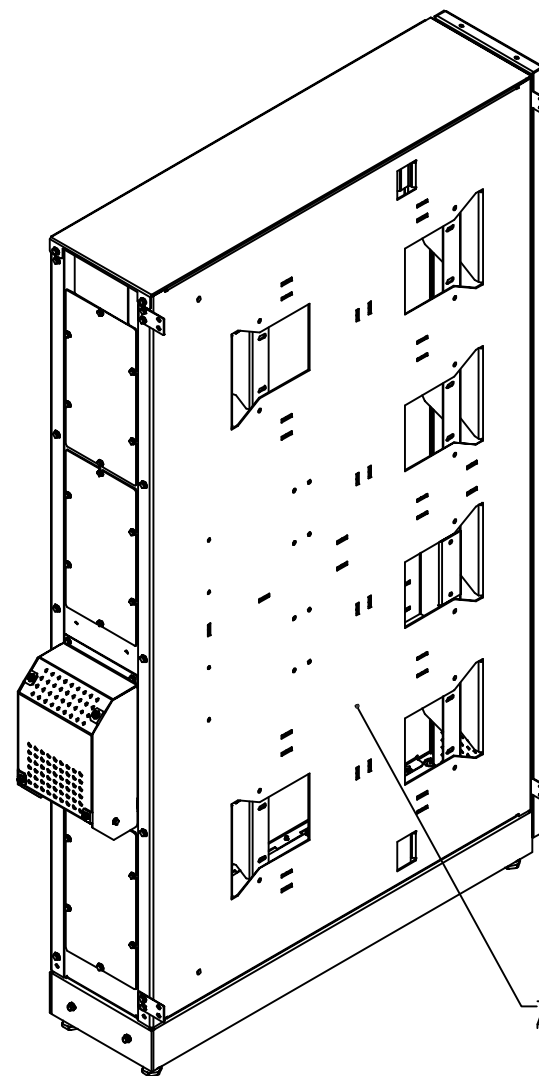
METRIC		EATON CORPORATION, ELECTRICAL		Eaton	
SITE PLAN DRAWING, 93E 30 SIAC-B					
DESIGNED BY M. Carnes	DATE 26-AUG-2013	UNLESS OTHERWISE SPECIFIED TOLERANCES ON DIMENSIONS ARE:	AS SHOWN	SCALE: 1:1	DATE: 26-AUG-2013
NO. ECD-053415	REV. 002	FRONT VIEW	REAR VIEW	TOP VIEW	BOTTOM VIEW
PRO-ENGINEER GENERATED		REV. 002		PAGE 1 OF 3	

8 7 6 5 4 3 2 1

H
G
F
E
D
C
B
A



ISO VIEW
RIGHT FRONT
RIGHT SIDE MOUNT SIDE CAR SHOWN
SCALE 1:5



ISO VIEW
LEFT REAR
RIGHT SIDE MOUNT SIDE CAR SHOWN
SCALE 1:5

THIS PANEL IS UN-PAINTED
AND MUST BE PLACED AGAINST UPS

PRODUCT SPECIFICATIONS							
BYPASS CABINET RATING		AC INPUT VOLTAGE	AC OUTPUT VOLTAGE	RECTIFIER AC INPUT CURRENT	INVERTER AC OUTPUT CURRENT	BYPASS AC INPUT VOLTAGE	BYPASS AC INPUT CURRENT
KVA	CONFIGURATION	VAC	VAC	AMP	AMP	VAC	AMP
30	3-BREAKER	208Y/120	208Y/120	96	83	N/A	N/A
30	4-BREAKER	208Y/120	208Y/120	96	83	208Y/120	83

NOTE: FOR THE 3-BREAKER SIDE CAR APPLICATIONS, UPS RECTIFIER AC INPUT AND UPS BYPASS AC INPUT ARE INTERNALLY JUMPED AT THE UPS.

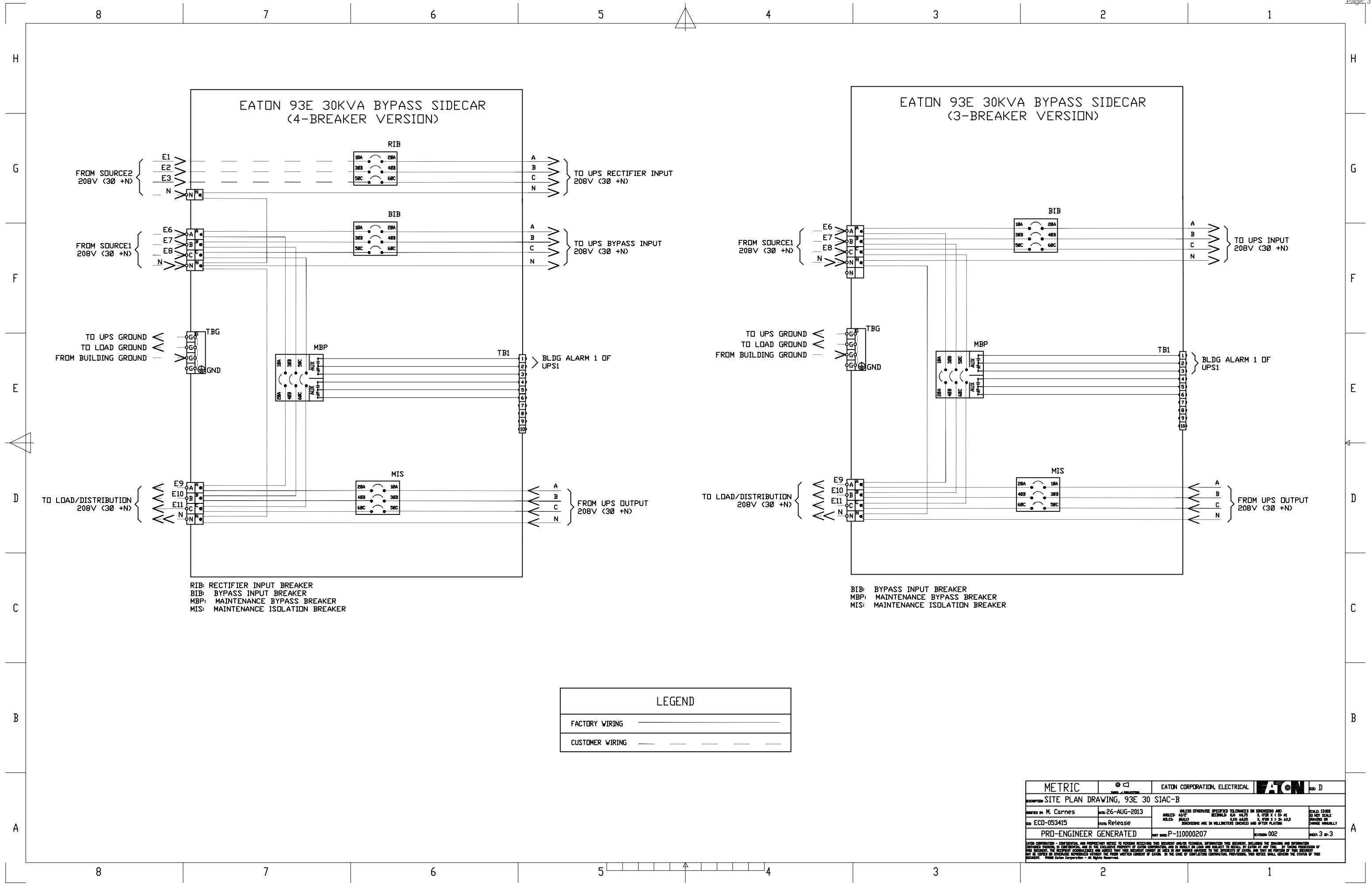
CUSTOMER WIRING (3 BREAKER CONFIGURATION)					
WIRES	ACCEPTED WIRE RANGE	TORQUE RATING *	RECOMMENDED MINIMUM WIRE SIZE **		
		N·m (L.B.#In)	(QTY)	AND WIRE SIZE	
AC INPUT (BIB)	PHASE WIRES	6 AWG TO 250 MCM	31.0 (275)	(1)	1/0
	NEUTRAL	6 AWG TO 300 MCM	31.0 (275)	(1)	1/0
	PROTECTIVE EARTHING (GROUND)	14 AWG TO 1/0	5.6 (50)	(1)	6 AWG
AC OUTPUT TO CRITICAL LOAD	PHASE WIRES	6 AWG TO 250 MCM	31.0 (275)	(1)	1/0
	NEUTRAL	6 AWG TO 300 MCM	31.0 (275)	(1)	1/0
	PROTECTIVE EARTHING (GROUND)	14 AWG TO 1/0	5.6 (50)	(1)	6 AWG

* REFER TO UPS MANUAL FOR TORQUE CONNECTIONS TO UPS
** USE 90C COPPER CONDUCTOR WIRE ONLY

CUSTOMER WIRING (4 BREAKER CONFIGURATION)					
WIRES	ACCEPTED WIRE RANGE	TORQUE RATING *	RECOMMENDED MINIMUM WIRE SIZE **		
		N·m (L.B.#In)	(QTY)	AND WIRE SIZE	
RECTIFIER INPUT (BIB)	PHASE WIRES	14 AWG TO 3/0	5.65 (50)	(1)	1/0
	NEUTRAL	6 AWG TO 300 MCM	31.0 (275)	(1)	1/0
	PROTECTIVE EARTHING (GROUND)	14 AWG TO 1/0	5.6 (50)	(1)	6 AWG
BYPASS INPUT (BIB)	PHASE WIRES	6 AWG TO 250 MCM	31.0 (275)	(1)	1/0
	NEUTRAL	6 AWG TO 300 MCM	31.0 (275)	(1)	1/0
	PROTECTIVE EARTHING (GROUND)	14 AWG TO 1/0	5.6 (50)	(1)	6 AWG
AC OUTPUT TO CRITICAL LOAD	PHASE WIRES	6 AWG TO 250 MCM	31.0 (275)	(1)	1/0
	NEUTRAL	6 AWG TO 300 MCM	31.0 (275)	(1)	1/0
	PROTECTIVE EARTHING (GROUND)	14 AWG TO 1/0	5.6 (50)	(1)	6 AWG

METRIC		EATON CORPORATION, ELECTRICAL		EATON	
DESCRIPTION: SITE PLAN DRAWING, 93E 30 SIAC-B					
DESIGNED BY: M. Carnes	DATE: 26-AUG-2013	UNLESS OTHERWISE SPECIFIED TOLERANCES ON DIMENSIONS AND HOLES:		SCALE: 200% OR NEAR SCALE	
ECO-053415	DATE RELEASED:	HOLES: 0.10	HOLES: 0.10	HOLES: 0.10	HOLES: 0.10
PRO-ENGINEER GENERATED		PART NUMBER: P-110000207		REVISION: 002	
<small>EATON CORPORATION - CONFIDENTIAL AND PROPRIETARY NOTICE TO PERSONS RECEIVING THIS DOCUMENT: ALL RIGHTS RESERVED. THIS DOCUMENT IS THE PROPERTY OF EATON CORPORATION AND IS LOANED TO YOU BY EATON CORPORATION. IT IS TO BE USED ONLY FOR THE PURPOSES FOR WHICH IT WAS LOANED AND IS NOT TO BE REPRODUCED OR TRANSMITTED IN ANY FORM OR BY ANY MEANS, ELECTRONIC OR MECHANICAL, INCLUDING PHOTOCOPYING, RECORDING, OR BY ANY INFORMATION STORAGE AND RETRIEVAL SYSTEM, WITHOUT THE WRITTEN PERMISSION OF EATON CORPORATION. IN THE CASE OF CONFLICTING CONTRACTUAL PROVISIONS, THIS NOTICE SHALL GOVERN THE STATUS OF THIS DOCUMENT. © Eaton Corporation - All Rights Reserved.</small>					

8 7 6 5 4 3 2 1



RIB: RECTIFIER INPUT BREAKER
 BIB: BYPASS INPUT BREAKER
 MBP: MAINTENANCE BYPASS BREAKER
 MIS: MAINTENANCE ISLATION BREAKER

BIB: BYPASS INPUT BREAKER
 MBP: MAINTENANCE BYPASS BREAKER
 MIS: MAINTENANCE ISLATION BREAKER

LEGEND	
FACTORY WIRING	—————
CUSTOMER WIRING	- - - - -

METRIC	EATON CORPORATION, ELECTRICAL	EATON
SITE PLAN DRAWING, 93E 30 SIAC-B		
DESIGNED BY: M. Carnes	DATE: 26-AUG-2013	SCALE: 15000
NO: ECD-053415	STATUS: Release	NO NEXT SCALE CHANGE UNLESS INDICATED OTHERWISE
PRO-ENGINEER GENERATED	REV: P-110000207	REVISED: 002
<small>EATON CORPORATION - CONFIDENTIAL AND PROPRIETARY NOTICE TO RECIPIENT RECEIVING THIS DOCUMENT AND/OR TECHNICAL INFORMATION THIS DOCUMENT IS THE PROPERTY OF EATON CORPORATION AND IS LOANED TO YOU SUBJECT TO THE TERMS AND CONDITIONS OF THE LICENSE AGREEMENT WHICH ACCOMPANIES THIS DOCUMENT. IT IS NOT TO BE REPRODUCED OR TRANSMITTED IN ANY FORM OR BY ANY MEANS, ELECTRONIC OR MECHANICAL, INCLUDING PHOTOCOPYING, RECORDING, OR BY ANY INFORMATION STORAGE AND RETRIEVAL SYSTEM, WITHOUT THE WRITTEN CONSENT OF EATON CORPORATION. THIS NOTICE SHALL GOVERN THE STATUS OF THIS DOCUMENT. ©2013 Eaton Corporation - All Rights Reserved.</small>		