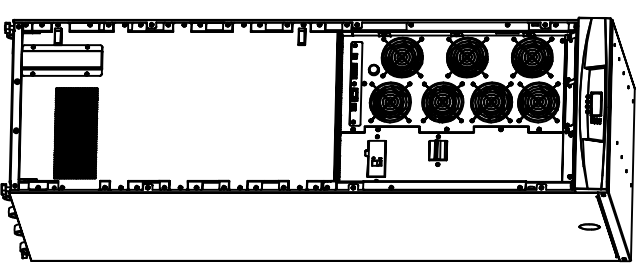
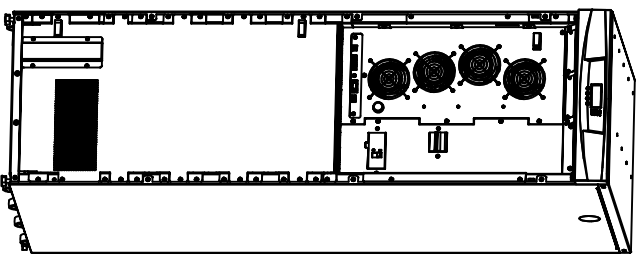
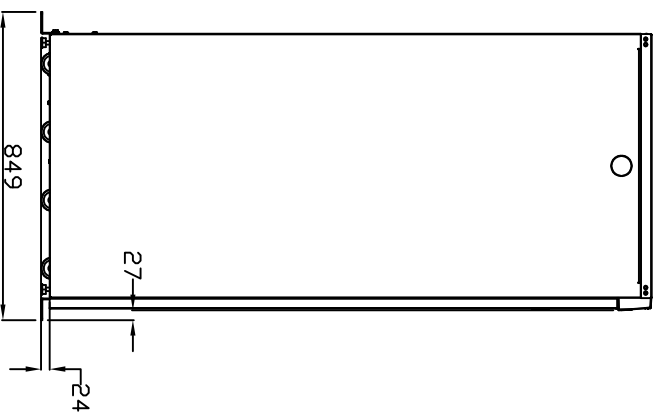
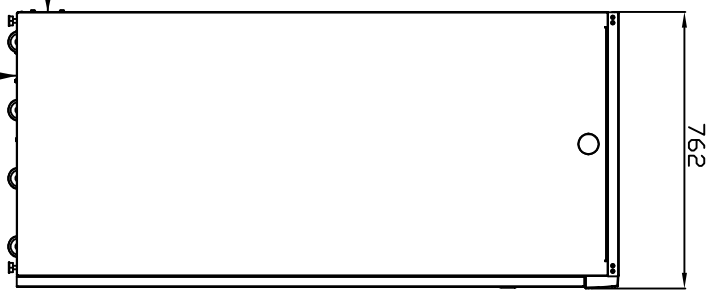
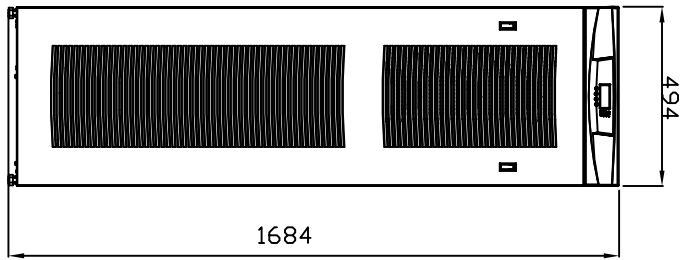


Rev/ECD no:	REV
REV	REV
REV	REV

THIS DRAWING CONTAINS PROPRIETARY INFORMATION OF POWERWARE AND MAY NOT, IN WHOLE OR IN PART, BE REPLICATED OR DISCLOSED OR USED FOR MANUFACTURE OF ANY PART DISCLOSED HEREIN WITHOUT THE PRIOR WRITTEN PERMISSION OF POWERWARE.

Rev/ECD no:	REV
REV	REV
REV	REV

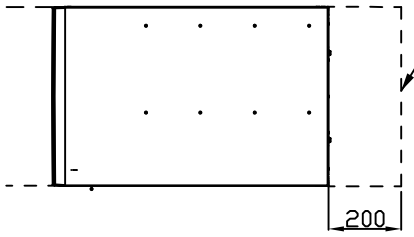
1 | 2 | 3 | 4 | 5 | 6 | 7 | 8 | 9 | 10 | 11 | 12



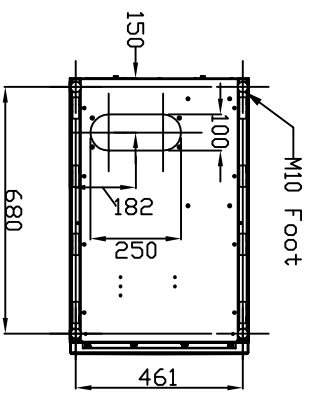
20 - 30 kVA

40 kVA

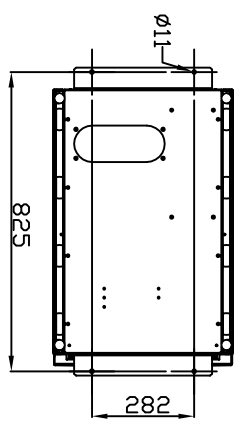
Minimum space needed for air-flow and cabling



1 meter free space needed in front of the device for maintenance purposes



M10 Foot



Weights (20-30 / 40 kVA):  
 200/217 kg (no batteries)  
 300 kg (UPS + 1 string)  
 400 kg (UPS + 2 string)  
 500/517 kg (UPS + 3 string)  
 600/617 kg (UPS + 4 string)

POWERWARE	Title	Dimensions Drawing	-	No	9X55 20 - 40 kVA	Rev	E		
	Checked	-						Approved	2012/2006 -

H | G | F | E | D | C | B | A