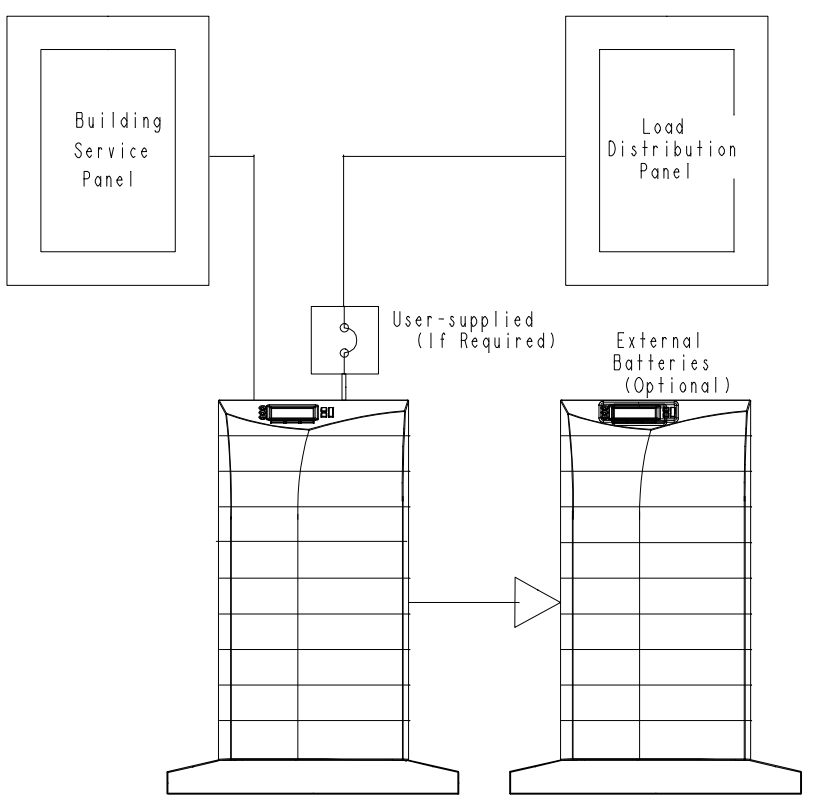


SYSTEM WITH EXTERNAL BYPASS SWITCH



SYSTEM W/O EXTERNAL BYPASS SWITCH

REQUIRED INPUT CIRCUIT BREAKER SIZES (200-240 VAC, 50/60 Hz)	
UPS CAPACITY	CIRCUIT BREAKER RATING
3 kVA	25A
6 kVA	40A
9 kVA	60A
12 kVA	80A
15 kVA	100A
18 kVA	125A

THIRD ANGLE PROJECTION		POWERWARE RALEIGH NC 27616 U.S.A.	
DESCRIPTION: OUTLINE DRAWING AND CENTER OF GRAVITY PW9170+ SYST			
GROUP/PROJECT: PW 9170	PRO-ENGINEER GENERATED	SUBCLASS: OUTLINE	PRO VERSION: 3
CREATED BY: HUTSELL_N DATE: 25-jul-2002	UNLESS OTHERWISE SPECIFIED TOLERANCES ON DIMENSIONS ARE: DECIMALS: 0.X ±0.1 0.XX ±0.03 0.XXX ±0.010 HOLE Ø ±0.005 FRACTIONS ±1/64" ANGLES ±1/2° DIMENSIONS ARE IN INCHES (MILLIMETERS) AND AFTER PLATING		SCALE: 0.045 DO NOT SCALE DRAWING OR CHANGE MANUALLY
MODIFIED BY: HUTSELL_N DATE: 31-jul-2002	REVISION: B00	RN/CN/SPRN No: 9170-0159	SIZE: B
CHECKED BY: WINEGAR_N DATE: 01-aug-2002	APPROVED BY: WINEGAR_N DATE: 01-aug-2002	OBJECT ID: 9506	STATUS: RELEASED
SHEET: 2 OF 10			
THESE DRAWINGS AND SPECIFICATIONS ARE THE PROPERTY OF POWERWARE CORP. AND SHALL NOT BE REPRODUCED OR COPIED OR USED AS THE BASIS FOR MANUFACTURE OR SALE OF APPARATUS WITHOUT PERMISSION			