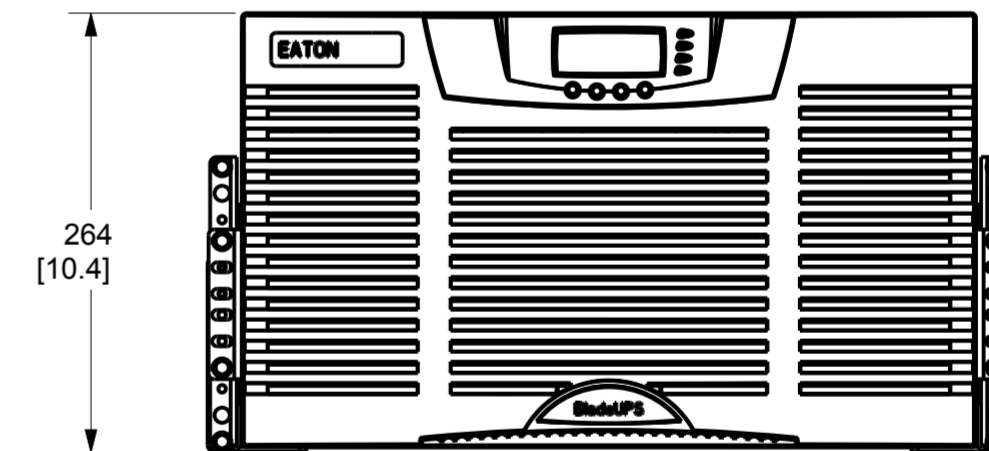
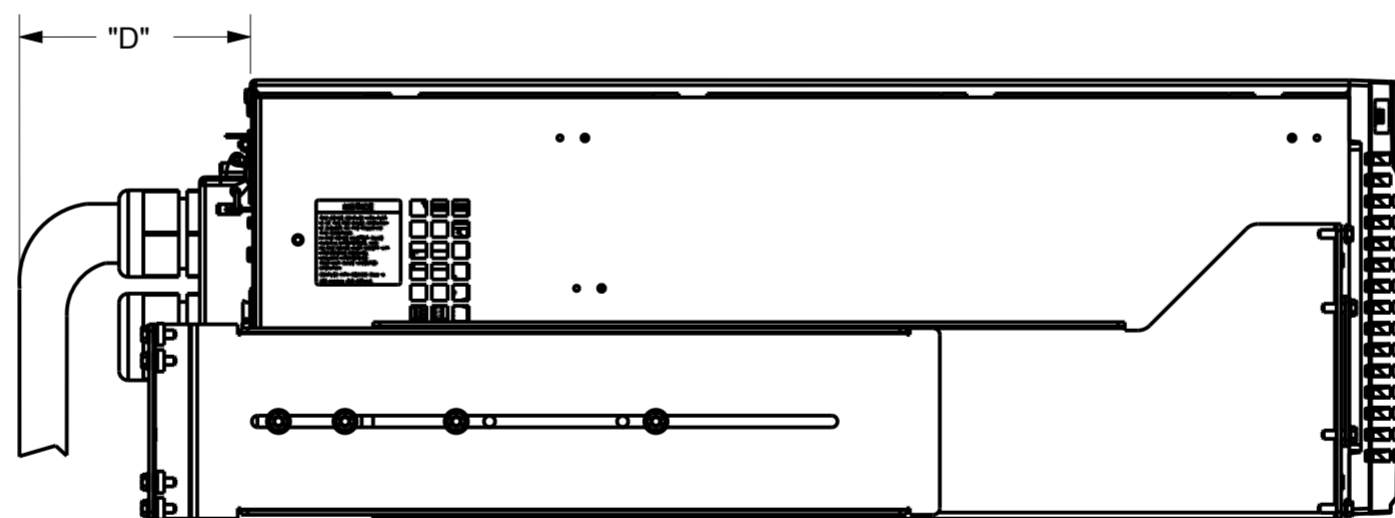
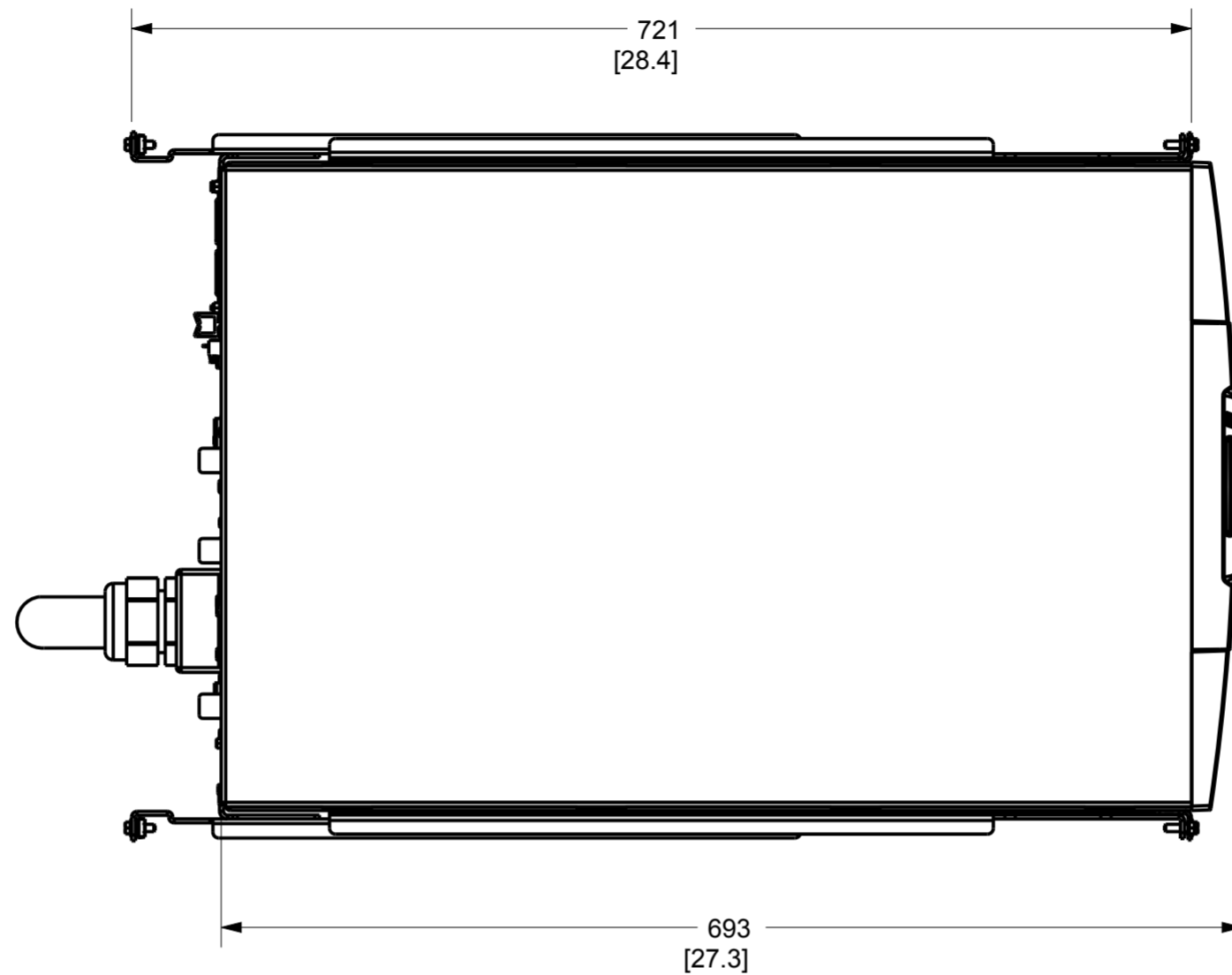


LINE CORD NOT SHOWN



NOTES:

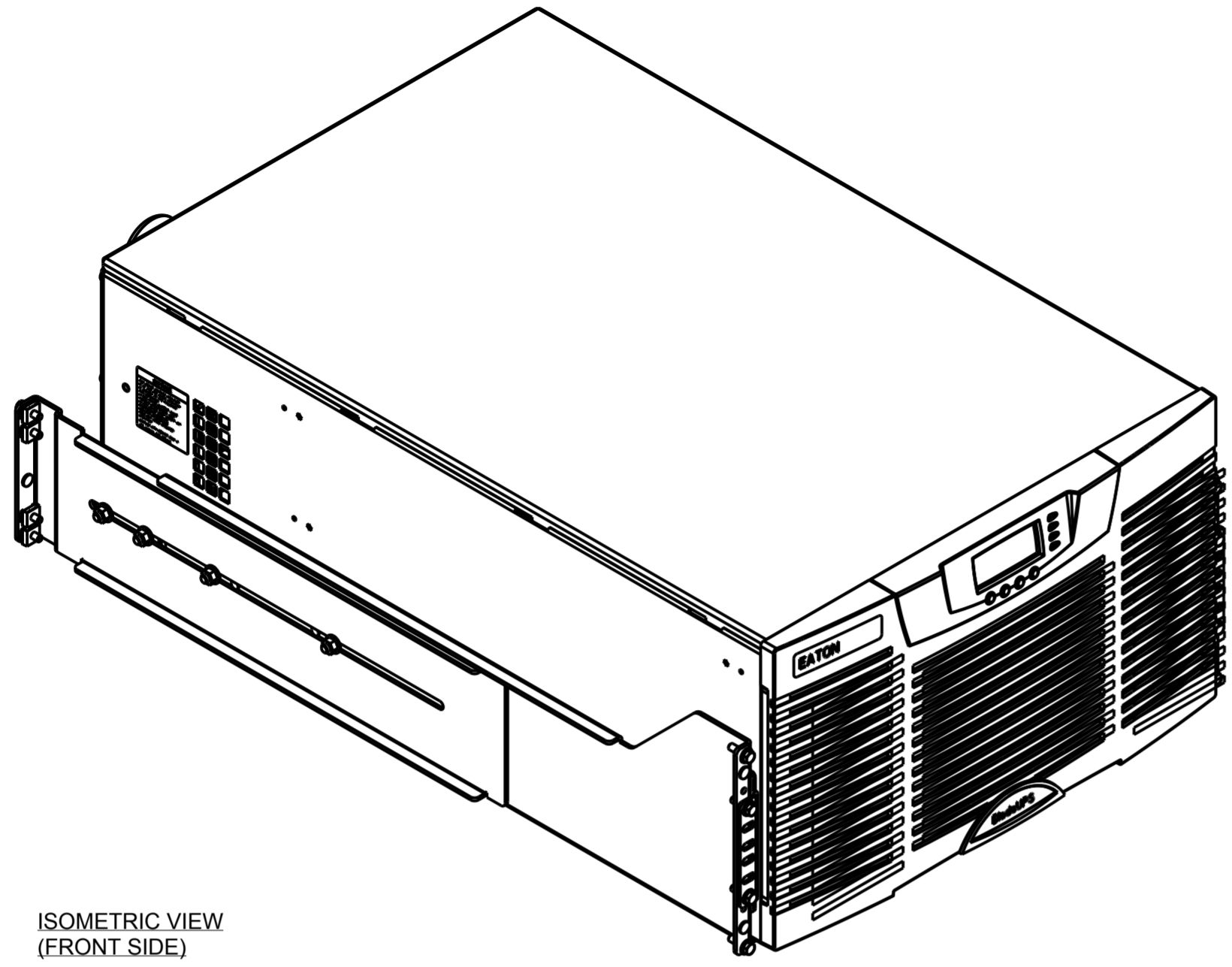
1. ALL DIMENSIONS ARE IN MILLIMETERS [INCHES].
2. THE SYSTEM MUST BE INSTALLED ON A LEVEL FLOOR SURFACE SUITABLE FOR COMPUTER OR ELECTRONIC EQUIPMENT.
3. THE SYSTEM MUST BE INSTALLED IN A TEMPERATURE AND HUMIDITY CONTROLLED INDOOR AREA FREE OF CONDUCTIVE CONTAMINANTS.
4. ALL WIRING IS TO BE IN ACCORDANCE WITH NATIONAL AND LOCAL ELECTRIC CODES.
5. SPECIFICATIONS ARE SUBJECT TO CHANGE.

METRIC		THIRD ANGLE PROJECTION		EATON CORPORATION		<b>EATON</b>	
DIMENSIONS ARE IN MILLIMETERS AFTER PLATING. DIMENSIONS AND TOLERANCES IN ACCORDANCE WITH ASME Y14.5M-1994. SEE NOTES FOR TOLERANCES.							
DESCRIPTION: SINGLE MODULE BLADEUPS SITE PLAN DRAWING							
ORIGINATED: R. SINGH	15-DEC-2016	ECO: TBD	NAME:	REVISION: 01	SIZE: A2		
MODIFIED: -	-				SCALE:		
CHECKED:		DOCUMENT TYPE:	199002076	STATE: RELEASE	11:50		
SAFETY:		PRO-E DRAWING			SHEET:		
APPROVED:					1 OF 3		

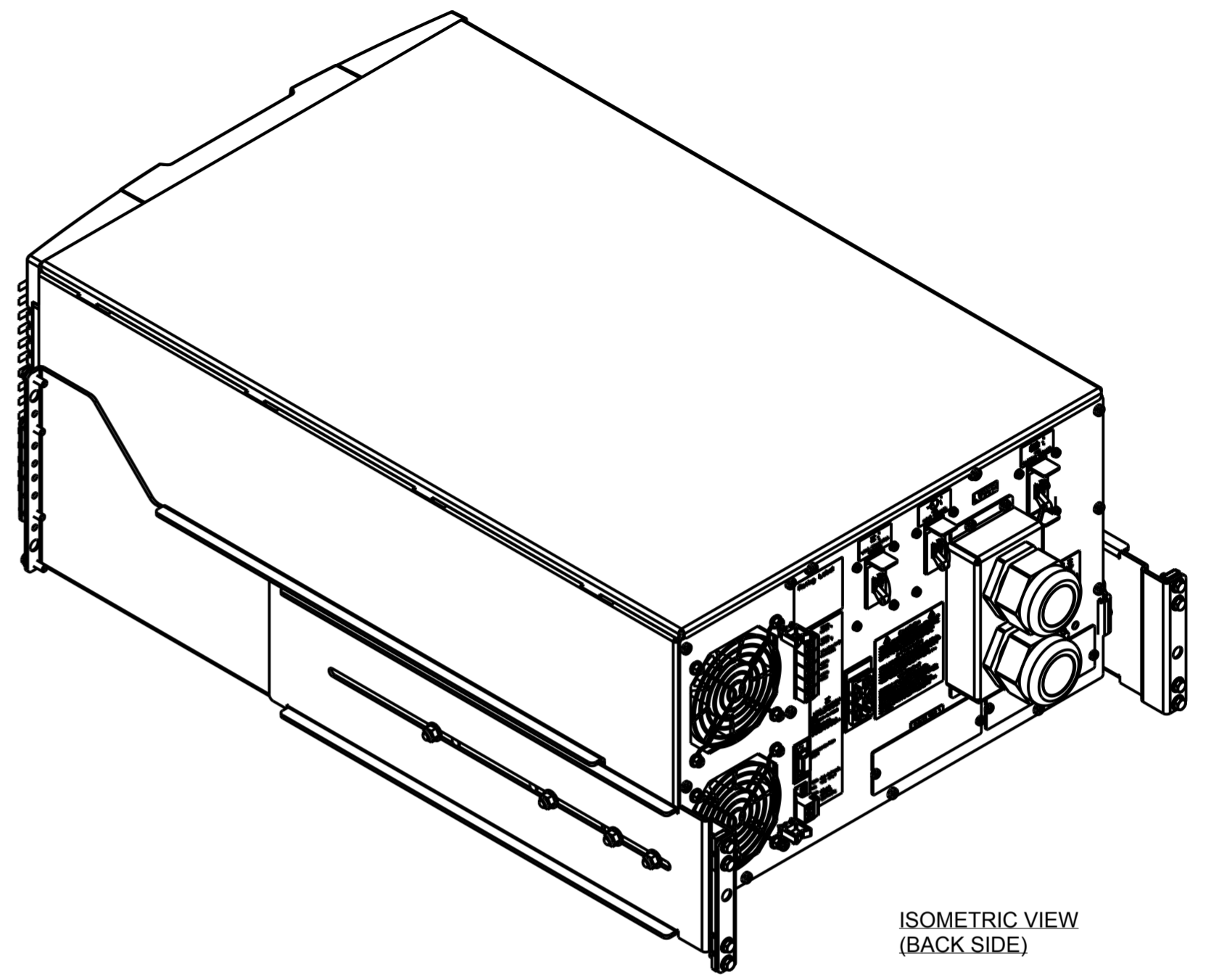
EATON CORPORATION - CONFIDENTIAL AND PROPRIETARY  
 NOTICE TO PERSONS RECEIVING THIS DOCUMENT AND/OR TECHNICAL INFORMATION  
 THIS DOCUMENT, INCLUDING THE DRAWING AND INFORMATION CONTAINED THEREON, IS CONFIDENTIAL AND IS THE EXCLUSIVE PROPERTY OF EATON CORPORATION, AND IS MERELY ON LOAN AND SUBJECT TO RECALL BY EATON AT ANY TIME. BY TAKING POSSESSION OF THIS DOCUMENT, THE RECIPIENT ACKNOWLEDGES AND AGREES THAT THIS DOCUMENT CANNOT BE USED IN ANY MANNER ADVERSE TO THE INTERESTS OF EATON AND THAT NO PORTION OF THIS DOCUMENT MAY BE COPIED OR OTHERWISE REPRODUCED WITHOUT THE PRIOR WRITTEN CONSENT OF EATON. IN THE CASE OF CONFLICTING CONTRACTUAL PROVISIONS, THIS NOTICE SHALL GOVERN THE STATUS OF THIS DOCUMENT.  
 © 2011 Eaton Corporation. All Rights Reserved.

1 2 3 4 5 6 7 8 9 10 11 12

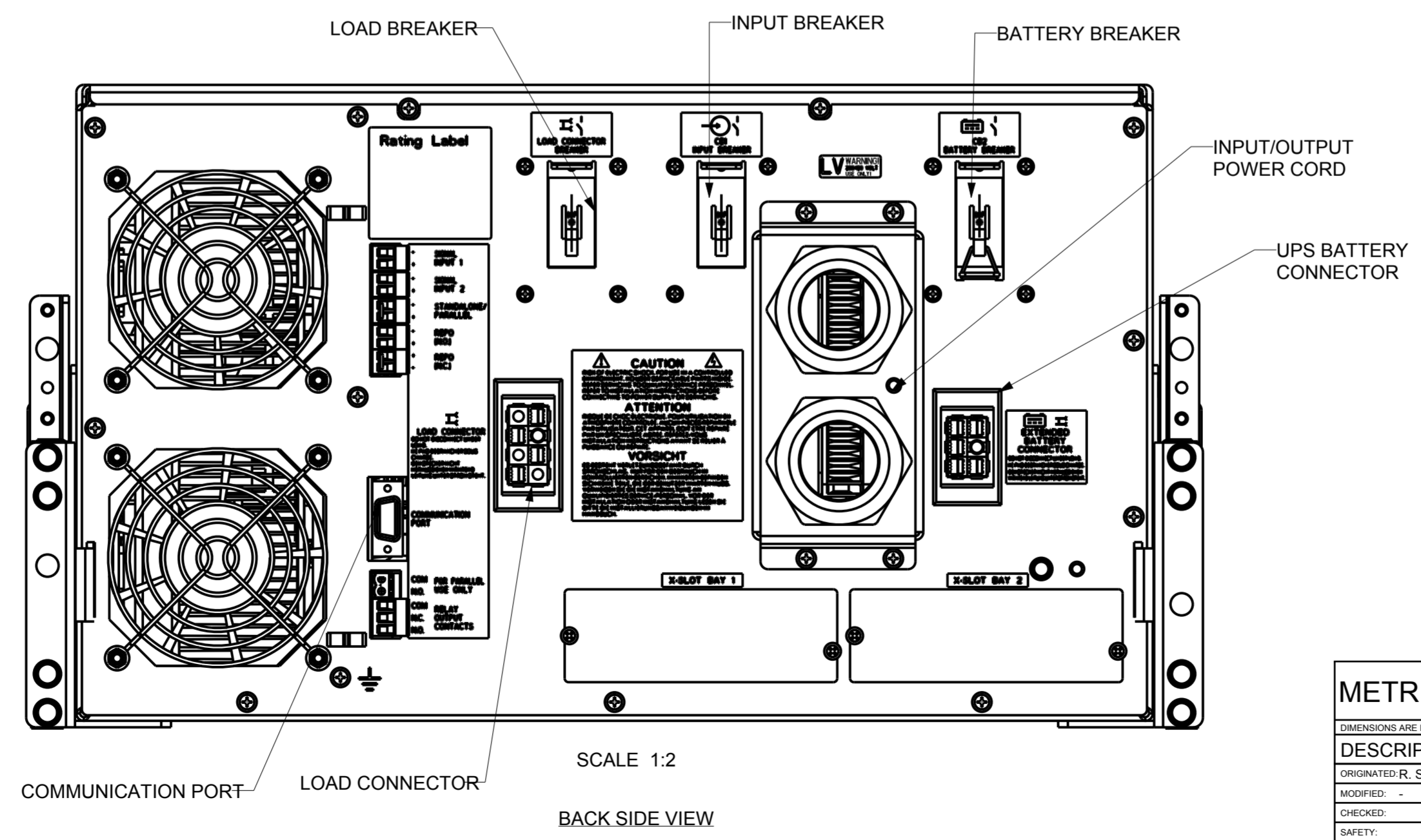
A  
B  
C  
D  
E  
F  
G  
H



ISOMETRIC VIEW  
(FRONT SIDE)



ISOMETRIC VIEW  
(BACK SIDE)



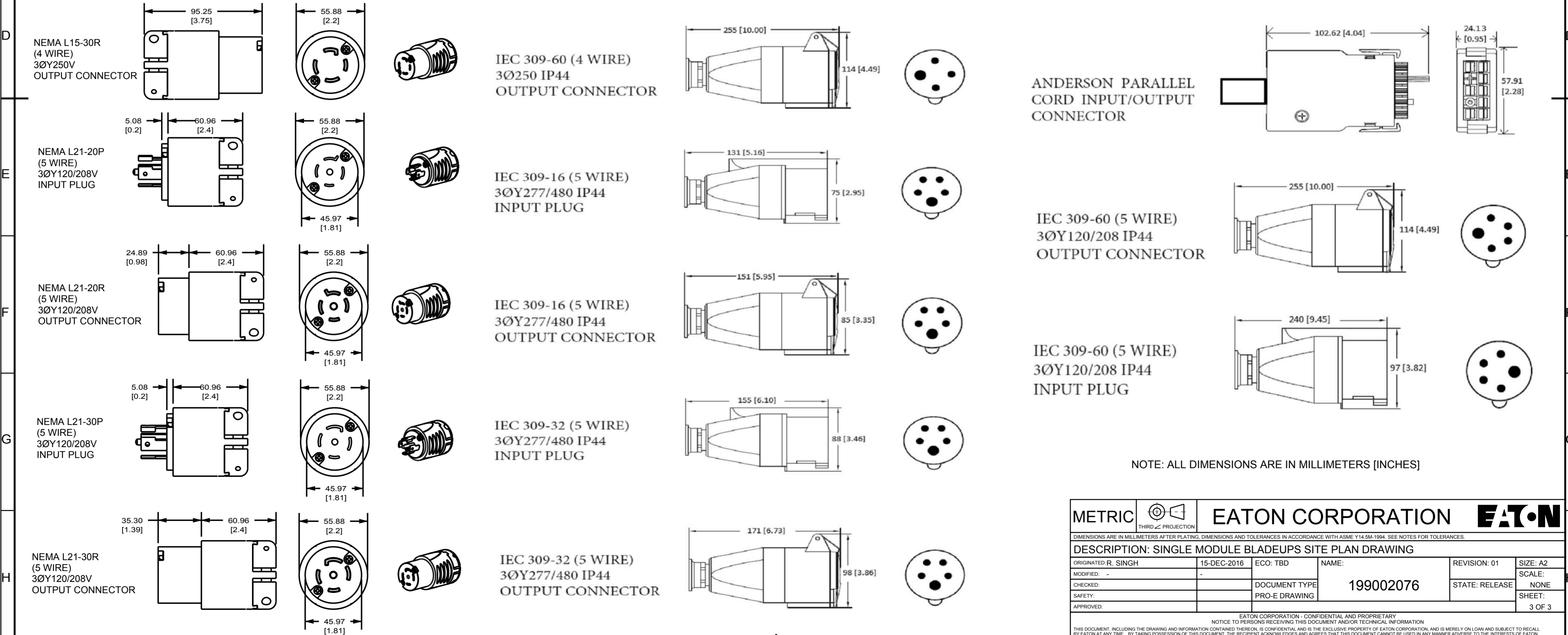
SCALE 1:2  
BACK SIDE VIEW

METRIC		THIRD ANGLE PROJECTION		EATON CORPORATION		<b>EATON</b>	
DIMENSIONS ARE IN MILLIMETERS AFTER PLATING. DIMENSIONS AND TOLERANCES IN ACCORDANCE WITH ASME Y14.5M-1994. SEE NOTES FOR TOLERANCES.							
DESCRIPTION: SINGLE MODULE BLADEUPS SITE PLAN DRAWING							
ORIGINATED: R. SINGH	15-DEC-2016	ECO: TBD	NAME:	REVISION: 01	SIZE: A2		
MODIFIED: -	-				SCALE:		
CHECKED:		DOCUMENT TYPE	199002076	STATE: RELEASE	1:4		
SAFETY:		PRO-E DRAWING			SHEET:		
APPROVED:					2 OF 3		
<small>EATON CORPORATION - CONFIDENTIAL AND PROPRIETARY          NOTICE TO PERSONS RECEIVING THIS DOCUMENT AND/OR TECHNICAL INFORMATION          THIS DOCUMENT, INCLUDING THE DRAWING AND INFORMATION CONTAINED THEREON, IS CONFIDENTIAL AND IS THE EXCLUSIVE PROPERTY OF EATON CORPORATION, AND IS MERELY ON LOAN AND SUBJECT TO RECALL BY EATON AT ANY TIME. BY TAKING POSSESSION OF THIS DOCUMENT, THE RECIPIENT ACKNOWLEDGES AND AGREES THAT THIS DOCUMENT CANNOT BE USED IN ANY MANNER ADVERSE TO THE INTERESTS OF EATON AND THAT NO PORTION OF THIS DOCUMENT MAY BE COPIED OR OTHERWISE REPRODUCED WITHOUT THE PRIOR WRITTEN CONSENT OF EATON. IN THE CASE OF CONFLICTING CONTRACTUAL PROVISIONS, THIS NOTICE SHALL GOVERN THE STATUS OF THIS DOCUMENT.</small>							

1 2 3 4 5 6 7 8 9 10 11 A2

TABLE : ELECTRICAL SPECIFICATIONS

BLADE UPS MODEL NUMBER	RATED (kVA)	RATED VOLTAGE (V)	RATED INPUT /OUTPUT CURRENT(A)	HEAT DISSIPATION (HE MODEL) WATTS, BTU/HOUR	LINE CORD INPUT/ OUTPUT CONNECTORS	NOMINAL CORD LENGTH FROM REAR PANEL M [IN]	LINE CORD BEND RADIUS MM [IN]	DEPTH OF CORD BEND FROM REAR PANEL "D" MM [IN]	WEIGHT (UPSW/BATTERIES) lb (kg)
ZC08110xxx xxxxx	8	208	25 / 22.2	264, 903 @ FULL LOAD	NEMA L21-30P/ NONE	3.6m [144 in]	162mm [6.4 in]	231mm [9.1 in]	307 (140)
ZC08111xxx xxxxx	8	208	25 / 22.2	264, 903 @ FULL LOAD	NEMA L21-30P/ NEMA L21-30R	3.8m [149 in]/ 2.0m [77 in]	162mm [6.4 in]	231mm [9.1 in]	307 (140)
ZC05177xxx xxxxx	5	208	17 / 13.9	210, 707 @ FULL LOAD	NEMA L21-20P/ NEMA L21-20R	3.8m [149 in]/ 2.0m [77 in]	142mm [5.6 in]	211mm [8.3 in]	218 (99)
ZC08115xxx xxxxx	8	208	25 / 22.2	264, 903 @ FULL LOAD	NEMA L21-30P/ NEMA L15-30R	3.8m [149 in]/ 1.3m [53 in]	162mm [6.4 in]	231mm [9.1 in]	307 (140)
ZC12120xxx xxxxx	12	208	36 / 33.3	371, 1266 @ FULL LOAD	IEC 309-60(5WIRE)/ NONE	3.8m [149 in]	223mm [8.8 in]	297mm [11.7 in]	307 (140)
ZC12122xxx xxxxx	12	208	36 / 33.3	371, 1266 @ FULL LOAD	IEC 309-60(5WIRE)/ IEC 309-60(5WIRE)	1.8m [72 in]/ 1.2m [48 in]	223mm [8.8 in]	297mm [11.7 in]	307 (140)
ZC12126xxx xxxxx	12	208	36 / 33.3	371, 1266 @ FULL LOAD	IEC 309-60(5WIRE)/ IEC 309-60(4WIRE)	1.8m [72 in]/ 1.2m [48 in]	223mm [8.8 in]	297mm [11.7 in]	307 (140)
ZC121P0xxx xxxxx	12	208	36 / 33.3	371, 1266 @ FULL LOAD	ANDERSON (PARALLEL CORD)/ NONE	0.5m [19 in]	142mm [5.6 in]	211mm [8.3 in]	307 (140)
ZC08230xxx xxxxx	8	400	14 / 11.5	264, 903 @ FULL LOAD	IEC 309-16(5WIRE)/ NONE	3.6m [144 in]	142mm [5.6 in]	211mm [8.3 in]	307 (140)
ZC08233xxx xxxxx	8	400	14 / 11.5	264, 903 @ FULL LOAD	IEC309-16(5WIRE)/ IEC 309-16(5WIRE)	3.8m [149 in]/ 1.3m [53 in]	142mm [5.6 in]	211mm [8.3 in]	307 (140)
ZC12240xxx xxxxx	12	400	20 / 17.3	371, 1266 @ FULL LOAD	IEC 309-32(5WIRE)/ NONE	3.8m [149 in]	162mm [6.4 in]	231mm [9.1 in]	307 (140)
ZC12244xxx xxxxx	12	400	20 / 17.3	371, 1266 @ FULL LOAD	IEC 309-32(5WIRE)/ IEC 309-32(5WIRE)	1.3m [53 in]/ 1.3m [53 in]	162mm [6.4 in]	231mm [9.1 in]	307 (140)
ZC12288xxx xxxxx	12	400	20 / 17.3	371, 1266 @ FULL LOAD	IEC 309-32(5WIRE)/ IEC 309-32(5WIRE)	2.0m [77 in]/ 0.6m [23 in]	162mm [6.4 in]	231mm [9.1 in]	307 (140)
ZC122A9xxx xxxxx	12	400	20 / 17.3	371, 1266 @ FULL LOAD	IEC 309-32(5WIRE)/ IEC 309-32(5WIRE)	3.2m [125 in]/ 0.7m [29 in]	162mm [6.4 in]	231mm [9.1 in]	307 (140)
ZC122F9xxx xxxxx	12	400	20 / 17.3	371, 1266 @ FULL LOAD	IEC 309-32(5WIRE)/ IEC 309-32(5WIRE)	4.4m [174 in]/ 0.7m [29 in]	162mm [6.4 in]	231mm [9.1 in]	307 (140)
ZC122P0xxx xxxxx	12	400	20 / 17.3	371, 1266 @ FULL LOAD	ANDERSON (PARALLEL CORD)/ NONE	0.5m [19 in]	142mm [5.6 in]	211mm [8.3 in]	307 (140)



NOTE: ALL DIMENSIONS ARE IN MILLIMETERS [INCHES]

METRIC	EATON CORPORATION			
DIMENSIONS ARE IN MILLIMETERS AFTER PLATING, DIMENSIONS AND TOLERANCES IN ACCORDANCE WITH ASME Y14.5M-1994. SEE NOTES FOR TOLERANCES.				
DESCRIPTION: SINGLE MODULE BLADEUPS SITE PLAN DRAWING				
ORIGINATED: R. SINGH	15-DEC-2016	ECO: TBD	NAME:	REVISION: 01
MODIFIED: -	-		199002076	STATE: RELEASE
CHECKED:		DOCUMENT TYPE		SCALE: NONE
SAFETY:		PRO-E DRAWING		SHEET: 3 OF 3
APPROVED:				

EATON CORPORATION - CONFIDENTIAL AND PROPRIETARY  
NOTICE TO PERSONS RECEIVING THIS DOCUMENT AND/OR TECHNICAL INFORMATION  
THIS DOCUMENT, INCLUDING THE DRAWING AND INFORMATION CONTAINED THEREON, IS CONFIDENTIAL AND IS THE EXCLUSIVE PROPERTY OF EATON CORPORATION, AND IS MERELY ON LOAN AND SUBJECT TO RECALL BY EATON AT ANY TIME. BY TAKING POSSESSION OF THIS DOCUMENT, THE RECIPIENT ACKNOWLEDGES AND AGREES THAT THIS DOCUMENT CANNOT BE USED IN ANY MANNER ADVERSE TO THE INTERESTS OF EATON AND THAT NO PORTION OF THIS DOCUMENT MAY BE COPIED OR OTHERWISE REPRODUCED WITHOUT THE PRIOR WRITTEN CONSENT OF EATON. IN THE CASE OF CONFLICTING CONTRACTUAL PROVISIONS, THIS NOTICE SHALL GOVERN THE STATUS OF THIS DOCUMENT.