

# The Eaton Micro Data Center

Single Enclosure Integrated Solution for IT Equipment



**EATON**

*Powering Business Worldwide*

# Eaton's Micro Data Center provides an easy-to-configure solution for IT equipment storage in 'Edge-of-Cloud' applications.



## Monitoring

- Rack-mountable, 1U space
- Set UPS, air conditioning and environmental sensing
- On-line LCD display
- Remote monitoring



## Sensors & Accessories

- Temperature, humidity, smoke, flooding, magnetic door sensors
- Rear fluorescent lighting



## UPS

- Eaton 9PX on-line UPS
- 3kVA and 6kVA output
- 2RMU and 3RMU
- Other models available upon request



Front



Rear

## Enclosure

- 42U x 600mm x 1200mm
- Fully enclosed design, dust and noise reduction
- Load Rating: 1500kg



## Cooling Unit

- Rack-mount, 5RMU
- DC inverter compressor
- Non-stop cooling operation
- R410A environmentally friendly refrigerant



## Power Distribution Module

- Rack-mount, occupies 3U space
- Integrated input and output power distribution and lightning protection modules



## PDU

- Eaton G3 Series Managed PDU
- 20 x C13, 4 x C19 standard outlets
- Other models available upon request

# Save time. Save money. Reduce risk.

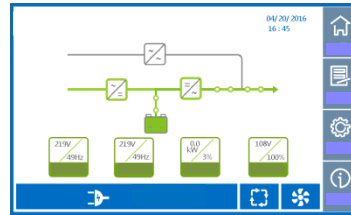
As more companies shift IT resources to on-site Edge-Computing, IT managers are in need of low-cost micro-data centers which can be stored in both office environments and indoor manufacturing sites with fully-contained environmental solutions. Eaton's Micro Data Center ships fully configured with Eaton's industry-leading power systems, a standard rack and cooling unit, and integrated monitoring system, saving installation time, minimizing Total Cost of Ownership (TCO) and maximizing network reliability.

## Save time.

Easy to configure racks can be tailored to meet your needs. Components are stocked in-region to ensure fast shipment and easy start-up.



**Configure-to-order**  
Quickly customize the UPS & PDU to your application needs.



**Easy Start-up**  
On-site set-up of power system, cooling and environmental sensors



**Remote Access Monitoring**  
Access power and monitoring information. Alarm settings can send by text and email.

## Save money.

Fully integrated solutions save money on hardware costs in addition to removing the need for in-room cooling and maximizing network up-time.



**Lowest Total Cost of Ownership (TCO)**  
In-rack cooling system eliminates the need for room-level cooling system reducing total infrastructure costs.



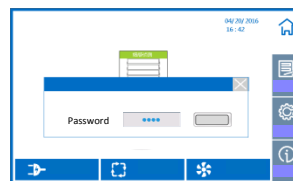
**Bundled Solutions**  
Minimize total system investment through integrated, bundled offering.

## Reduce risk.

The Micro Data Center provides enhanced physical security with robust environmental controls.



**Environmental Alarms**  
Protect against fire, dust, smoke, temperature and humidity



**Electronic Lock**  
Only permit authorized users internal access via security code



**Welded Steel Frame**  
Enhanced structural stability with 1500kg load rating

# Eaton's Micro Data Center System Specifications

## Product Specifications

Item	Parameter	Specification
System Specifications	Dimensions (H x W x D)	2000mmH (42U) x 600mmW x 1200mmD
	# of Enclosures	1
	PUE (Full Load)	1.2 (Optimal)
	Input Power	AC 230V, 50/60Hz
	Max. Power Density	3.0kW / Enclosure
	Recommended IT Load	3.0kW (Max)
UPS Specification	Installation Site	Elevated floor installation / general ground installation
	Max. Power Rating	6kVA (2 x 3kVA UPS)
	Max. Equipment Load	3kVA
	Air Conditioning	Powered by dedicated 3kVA UPS
	Model	9PX (3kVA)
	Input Voltage Range	176 – 276V without derating (up to 100-276V with derating)
	Input Frequency Range	40-70Hz, 50/60Hz autoselection
	Power Factor	1.0
Power Distribution System	Installation	Rackmount, 2RMU (each)
	Installation Dimensions	Rack mount, 3RMU
	Power Distribution	Mains input and UPS output, lightning protection and maintenance bypass
Cooling and Airflow Management System	PDU	G3 Series (EMAB22): Managed PDU (0U), C20 Plug, 16A, 20 x C13, 4 x C19 Outlets
	Total Cooling Capacity	3.5kW
	A/C Total Air Volume	580m <sup>3</sup> /h
Monitoring System	A/C Power Supply (Voltage)	198 to 253 VAC
	A/C Installation	Rack-mountable, bottom of the enclosure interior, 5RMU
Enclosure Subsystem	Load Rating	1500kg
	Available RMU Space	29 RMU
	Internal Lighting	Standard – rear mounted
	Paint Color	Black (RAL9005)
	Front Door	Single Glass Door (Standard), Solid steel door (optional)
	Rear Door	Double Steel Door (Solid)
Monitoring System	Host Monitoring	Rack mount, 1U Height
	Monitoring Interface	7-inch Color Touch Screen
	Remote Monitoring	Web Page Integrated Monitoring Software
	Content	System Power, Cooling, Smoke, Flooding, Door Status
	Sensors	Flooding (1), Temperature and Humidity (1), Smoke (1), Doors (2)