

Power distribution for IT equipment

Basic
In-Line Metered
Metered Input

Metered Outlet
Switched
Managed



ePDU

G3 Platform

New range extension 2018

EATON

Powering Business Worldwide

Outlet grip functionality on standard IEC cable

Eaton's patent-pending IEC outlet grip secures plugs in place with a lever-actuated grip that's integrated into each outlet. Once the levers click into the grip position, the plugs are secured from accidental disconnect due to bumps or vibrations without the need for special power cords.



0 is unlocked, + is grip engaged

Advanced LCD pixel display with hot-swap capability

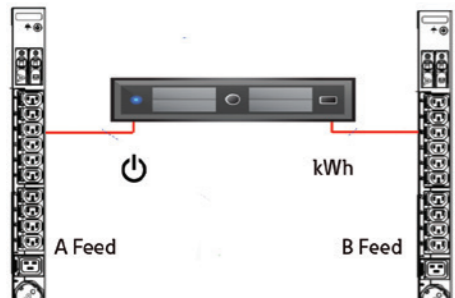
Eaton's new hot-swap eNMC (ePDU Network Management and Control) module can be replaced without the need to power down your rack. Increase uptime while enhancing serviceability and saving on unnecessary service calls. The menu-driven pixel display allows for easy setup and troubleshooting.



Module being removed without removing power to the ePDU

Device reboot and measurement across A and B feed

When connecting multiple source input servers to an A and B feed power source, the daisy-chain capability allows you to group power supplies across the ePDU. As a result, all the power supplies are controlled with a single action, which saves time rebooting servers with two to six power supplies. The power consumption is available for each device.



Typical server with multiple power inputs powered by two ePDUs

Universal Mounting

Models include both rear and side button mounting system and Eaton's patented variable mounting system.



Outlet switching

Remotely control devices by powering on or off individual outlets. Save time and operating costs by rebooting machines from your control center without costly site visits.

Sequential start up

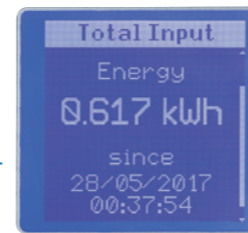
Make sure your servers start sequentially to avoid in rush current and start your database before the application.



Green LED signifies power on and red is power off to outlet

One percent billing grade accuracy

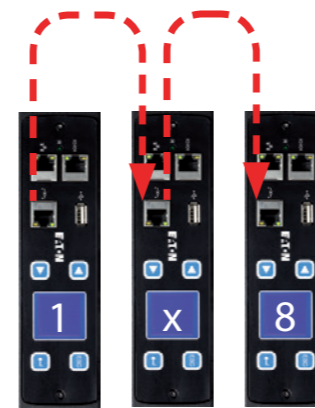
+1%



ePDU G3 provides one percent revenue-grade power monitoring for higher accuracy in department billing or colocation data centers. Effectively measure power usage to all outlets or individual outlets.

Daisy chain eight units from one IP address

Eaton's new patented daisy-chain capability allows up to eight ePDUs to share the same network connection and IP address. Unlike competitive rack PDUs that require a dedicated IP address for best performance, Eaton technology provides a 87% percent reduction in network infrastructure costs.



A and B power PDU sharing a network connection via daisy chain

Color-coded outlet sections

Color-coded outlet sections match a corresponding circuit breaker to easily identify which one feeds corresponding outlets and prevent unbalanced loading that would unnecessarily trip a breaker.



Features and benefits

| Category | Technology | Feature/Benefit |
|----------|-------------------------------|---|
| Basic | All technologies | Low-profile form factor: Provide zero interference into the rail space |
| | | High 60°C operating temperature: Fully functional in high operating temperature environments, resulting in reduced cooling costs |
| | | Integrated IEC outlet grips: Integrated lever-actuated grip that easily secures plugs to prevent accidental disconnect |
| Standard | All technologies except Basic | Color-coded outlet sections: Color-coded outlet sections match corresponding color-coded circuit breakers to simplify load balancing |
| | | Flexible mounting options: Button mounting on rear & side + variable mounting system |
| | | One percent billing grade accuracy: Revenue-grade power monitoring for higher accuracy to help optimize power utilization |
| | | Remote site management: Save time from onsite visits |
| | | Hot-swap meter: Remove meter without power disruption to increase uptime while enhancing serviceability |
| Advanced | Managed and Metered Outlet | Phase and section metering: Meter color-coded sections to control power utilization |
| | | Advanced LCD pixel display: Allow for easy IP setup and troubleshooting |
| | | Daisy chain (share network connection/IP address): Share the same network connection and IP address for up to eight rack PDUs, which will reduce network infrastructure costs |
| | | Cybersecurity: The firmware is updated on regular basis to keep the ePDU cybersecurity to highest standard. |
| | | Measure power consumption at outlet level: Acquire precise data and gain detailed energy analysis to make informed decisions and assist with effectively deploying equipment |
| Advanced | Managed and Switched | Measure Level 3 PUE: Measuring power at the outlet level allows users to measure Level 3 Power Usage Effectiveness (PUE), which provides the possibility of transforming billing into revenue or utility discounts |
| | | Outlet switching: Remotely control devices by powering on, off or rebooting individual outlets and set sequential start up across A&B feed |
| | | Group reboot for A and B feed: Group multiple power supplies across the rack PDU to control all with a single action, saving time when rebooting servers with two or more power supplies |
| | | Turn off unused outlets: Control unauthorized use |

Make more effective management decisions with intelligent power, space and environmental condition monitoring.

IPM Infrastructure helps to bridge the gap between facility and IT management by providing you just enough information, when you need it and where you need it.



Environmental monitoring including temperature and humidity with more functionality to follow.

Simple IT asset management including business prioritization capabilities.

Power chain monitoring including power kW, energy consumption (kWh), phase and circuit balancing.

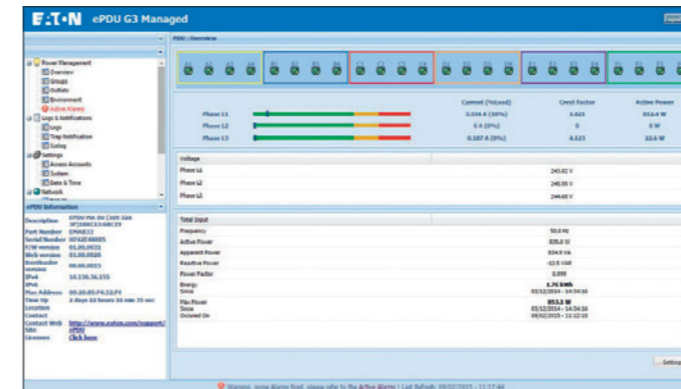
Trending analysis via an intuitive web interface with auditable logs and email alerts.

www.eaton.eu/ipminfrastructure

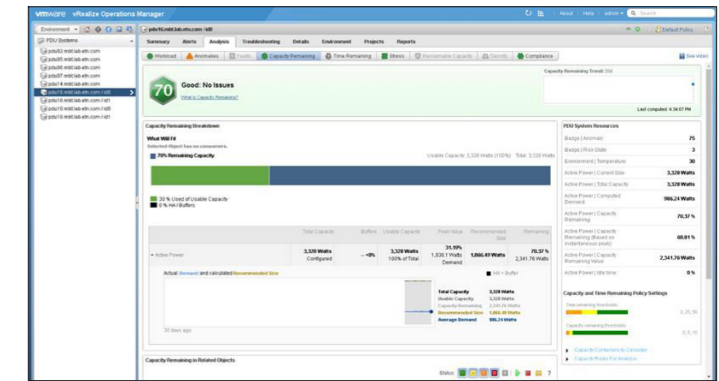
Ensure business uptime and monitor ePDUs and It equipment with Intelligent Power Manager

Full integration into VMware and Citrix with Intelligent Power Manager

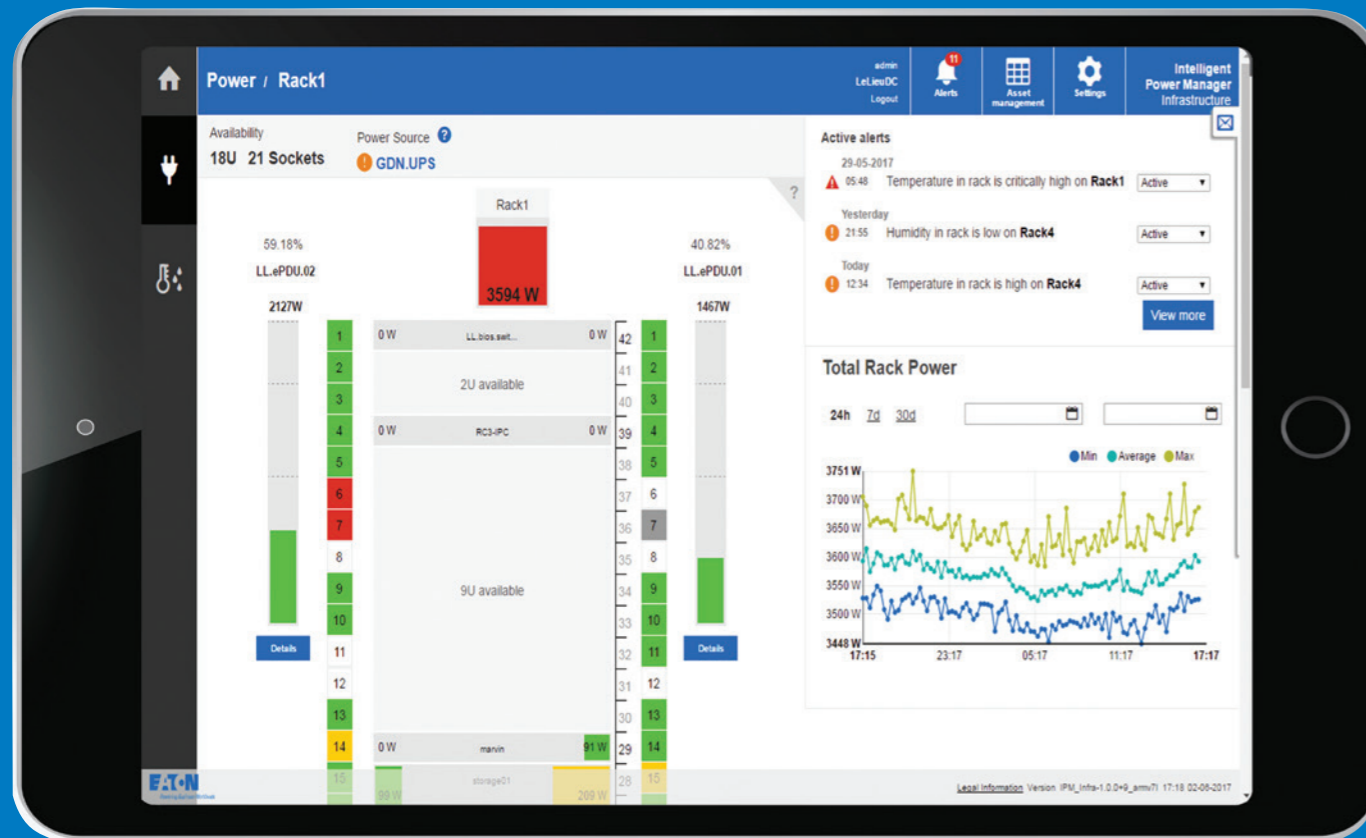
- Trigger VM migration or VMware Site Recovery Manager (SRM)
- User configurable alerts on the ePDU G3 work with Eaton's Intelligent Power Manager (IPM) software to trigger actions
- Trigger automatic migration of virtual servers in the event of a power failure via UPS, ePDU alarm or threshold, temperature/humidity or dry contact event
- Full integration in VMware interface



Detailed web-based interface on ePDU G3

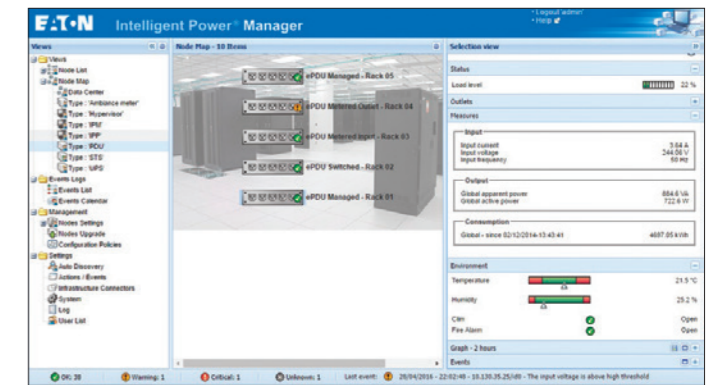


ePDU integration into vRealize Operations Manager (coming in 2018)



Intelligent Power Manager offers supervision and control through a single interface

- ePDU and UPS Management
- En masse Configuration of ePDU
- En masse Update of ePDU



Eaton collaborates with the leaders in converged and hyper-converged infrastructures and provide lab-validated power management solutions to ensure high uptime of IT systems and data integrity in case of power and environmental issues.



ePDU G3 Key features & technical specification

Range extension 2017

Also available in 1U 2U

| | Basic | In-Line Metered | Metered Input | Metered Outlet | Switched | Managed |
|---|-------|-----------------|---------------|----------------|----------|---------|
| Basic features | ✓ | NA | ✓ | ✓ | ✓ | ✓ |
| Built-in IEC outlet eGrip retention, retains all standard IEC plugs | ✓ | NA | ✓ | ✓ | ✓ | ✓ |
| Colour-coded outlet and branch circuits for simple load balancing | ✓ | NA | ✓ | ✓ | ✓ | ✓ |
| 60°C Operating temperature | ✓ | ✓ | ✓ | ✓ | ✓ | ✓ |
| Flexible mounting options: Button mounting on rear & side + variable mounting system | ✓ | ✓ | ✓ | ✓ | ✓ | ✓ |
| Standard features | | | | | | |
| Hot-Swap Control module with Advanced LCD + Optional Temp/Humidity sensor | | ✓ | ✓ | ✓ | ✓ | ✓ |
| ±1% IEC Class 1 Billing Grade Accuracy for V, W, A and kWh & Cisco EnergyWise compliant | | ✓ | ✓ | ✓ | ✓ | ✓ |
| Phase Metering, Circuit Breaker Current Metering and Input Metering | | ✓ | ✓ | ✓ | ✓ | ✓ |
| Daisy-Chain up to 8 ePDUs, reduce network infrastructure costs | | ✓ | ✓ | ✓ | ✓ | ✓ |
| En masse configuration and advanced action on virtual environment via Eaton Intelligent Power Manager IT | | ✓ | ✓ | ✓ | ✓ | ✓ |
| Power chain monitoring & Real time Intelligence on your Data Center, via Eaton Intelligent Power Manager Infrastructure | | ✓ | ✓ | ✓ | ✓ | ✓ |
| HTTPS, SSL, Telnet, FTP, SNMP, SMTP, DHCP, LDAP, RADIUS, DHCP 66/67 for Mass Configuration | | ✓ | ✓ | ✓ | ✓ | ✓ |
| Advanced features | | | | | | |
| Circuit Breaker Status Monitoring | | | | | | ✓ |
| Outlet and IT Equipment Metering across A and B feed | | | | | | ✓ |
| Level 3 PUE measurements | | | | | | ✓ |
| Turn off unused outlets to control commissioning | | | | | | ✓ |
| Outlet and IT Equipment Switching/reboot/sequencing across A and B feed | | | | | | ✓ |

| | Input Type / Rating (A) | Outlet type: Qty | Breakers | Nominal Power | Basic p/n | Dimensions L x W x D, mm | In-Line Metered & Dual p/n | Dimensions L x W x D, mm | Metered Input p/n | Dimensions L x W x D, mm | Metered Outlet p/n | Dimensions L x W x D, mm | Switched p/n | Dimensions L x W x D, mm | Managed p/n | Dimensions L x W x D, mm | | |
|------------------|-------------------------|------------------|---------------|---------------|-------------|--------------------------|----------------------------|--------------------------|-------------------|--------------------------|--------------------|--------------------------|--------------|--------------------------|-------------|--------------------------|------------|------------|
| 1 Phase | C14 10A | 8xC13 | | 2.3kW | EBAB02 | 443x19"x53 | | | 1U EMIH02 | 1Ux19"x203 | | | | | | | | |
| | | 12xC13 | | 2.3kW | EBAB19 | 443x19"x53 | | | | | | | | | | | | |
| | | 16xC13 | | 2.3kW | EBAB03 | 704x52x53 | | | EMIB03 | 1070x52x53 | | EMOB03 | 1154x52x53 | | ESWB03 | 1154x52x53 | EMAB03 | 1154x52x53 |
| | C20 16A | 8xFR: 1xC19 | | 3.7kW | 1U EFLX8F* | 1Ux19"x80 | | | | | | | | | | | | |
| | | 8xGE: 1xC19 | | 3.7kW | 1U EFLX8D* | 1Ux19"x80 | | | | | | | | | | | | |
| | | 6xUK: 1xC19 | 2 single pole | 3.7kW | EFLX6B* | 52x19"x120 | | | | | | | | | | | | |
| | | 12xC13: 1xC19 | 2 single pole | 3.7kW | 1U EFLX12I* | 1Ux19"x80 | | | | | | | | | | | | |
| | | 16xC13 | | 3.7kW | EBAB21 | 704x52x53 | | | | | | | | | | | | |
| | IEC60309 16A | 8xC13 | | 3.7kW | 1U EMIH28 | 1Ux19"x203 | | | 1U EMOH28 | 1Ux19"x203 | 1U ESWH28 | 1Ux19"x203 | 1U EMAH28 | 1Ux19"x203 | | | | |
| | | 20xC13: 4xC19 | | 3.7kW | EBAB22 | 1070x52x53 | | | EMIB22 | 1070x52x53 | | EMOB22 | 1604x52x53 | | ESWB22 | 1604x52x53 | EMAB22 | 1604x52x53 |
| | | 7xC13 : 1xC19 | | 3.7kW | | | | | | | | | | | | | | |
| | | 20xC13 : 4xC19 | | 3.7kW | EBAB04 | 1070x52x53 | | | EMIB04 | 1070x52x53 | | EMOB04 | 1604x52x53 | | ESWB04 | 1604x52x53 | EMAB04 | 1604x52x53 |
| IEC60309 | | | 3.7kW | | | | EILB13 | 443x52x53 | | | | | | | | | | |
| 2 x IEC60309 16A | | 2xIEC60309 | | 3.7kW | | | EILB24 | 443x65x52 | | | | | | | | | | |
| IEC60309 32A | 12xC13 : 4xC19 | 2 single pole | 7.4kW | | | | | EMIB06 | 1070x52x53 | | | | | | | | | |
| | 20xC13 : 4xC19 | 2 single pole | 7.4kW | EBAB05 | 1070x52x53 | | | EMIB05 | 1154x52x53 | | EMOB05 | 1604x52x53 | | ESWB05 | 1604x52x53 | EMAB05 | 1604x52x53 | |
| | 28xC13 : 4xC19 | 2 single pole | 7.4kW | | | | | | | | EMOB71 | 1829x52x53 | | | EMAB71 | 1829x52x53 | | |
| | 36xC13 : 6xC19 | 2 single pole | 7.4kW | EBAB08 | 1604x52x53 | | | EMIB08 | 1604x52x53 | | | | | | | | | |
| | IEC60309 | | 7.4kW | | | | EILB14 | 443x52x53 | | | | | | | | | | |
| | 2 x IEC60309 32A | 2xIEC60309 | | 7.4kW | | | EILB25 | 443x65x52 | | | | | | | | | | |
| | IEC60309 16A | 21xC13 : 3xC19 | | 11kW | EBAB20 | 1070x52x53 | | | EMIB20 | 1070x52x53 | | EMOB20 | 1604x52x53 | | ESWB20 | 1604x52x53 | EMAB20 | 1604x52x53 |
| | | 36xC13 : 6xC19 | | 11kW | EBAB00 | 1604x52x53 | | | EMIB00 | 1829x52x53 | | | | | | | | |
| | | 3xC13 : 6xC19 | 6 single pole | 22kW | EBAB01 | 704x52x53 | | | EMIB07 | 1604x52x53 | | | | | | | | |
| | | 18xC13 : 6xC19 | 6 single pole | 22kW | | | | | | | | | | | | EMAB33 | 1829x52x65 | |
| 12xC13 : 12xC19 | | 6 single pole | 22kW | | | | | EMIB12 | 1604x52x53 | | | | | | EMAB12 | 1829x52x65 | | |
| 24xC13 : 6xC19 | | 6 single pole | 22kW | EBAB32 | 1154x52x53 | | | EMIB32 | 1604x52x53 | | | | | | | | | |
| 30xC13 : 12xC19 | | 6 single pole | 22kW | | | | | EMIB34 | 1829x52x65 | | | | | | | | | |
| IEC60309 | | 22kW | | | | EILB15 | 443x52x53 | | | | | | | | | | | |
| 2 x IEC60309 32A | 2xIEC60309 | | 22kW | | | EILB26 | 443x65x52 | | | | | | | | | | | |

* Basic G3 features not applicable for the FlexPDU range
All standard ePDUs come with 3m cable

Need Something Special? We make your custom ePDUs, please contact your local reseller.
Standard models above are stocked in Europe.

ePDU G3 Accessories

| Accessories | Part Number | Benefits |
|-------------------------------|-------------------------|---|
| Sensor | EMP001 | Get live measurement on temperature, humidity, set threshold and be notified in real time |
| Adaptor Fast Ethernet Gigabit | GBCONV | Quick and easy way to upgrade your 10/100 Mb network interface G3 ePDU to Gigabit speed |
| ePDU to UPS cables | CBL0UT32 CBL20UT32 | Connect an ePDU 32A input to the hardware output UPS |
| Water leak detector* | WLD012 | Detect floods and water leaks |
| Door contact sensor* | DCS001 | Monitor your rack access |
| Intelligent Power Manager | IPM Basic, Silver, Gold | Monitor and managed multiple ePDUs Trigger actions from ePDUs & sensor events |

*Door contact sensor and water leak detector can be connected through EMP001 dry contacts



GBCONV EMP001 DCS001*



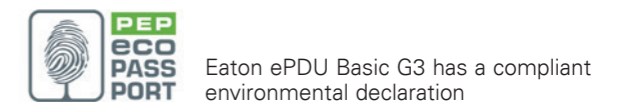
WLD012* CBL20UT32 CBL0UT32

All ePDU G3 come with a 2 years warranty as standard.
Warranty extension up to 3 years (Warranty+) and 5 years (Warranty 5) available

New Rack PDU Selector

rackpduselector.eaton.com/gb

From, input plugs to form factors and measurement features, Eaton's Rack PDU selector tool can help you find the right solution for your specific IT needs.



Need Something Special?

- Dedicated engineering teams in 3 centres of excellence are available to create your perfect ePDU
- Specific configurations or complete engineering projects
- Including national socket types, UK, French, Din/Schuko – including combinations of up to 3 types of outlet on an ePDU
- Colored ePDUs now available for the entire range, to easily identify your power source



Rack PDU selector



www.eaton.eu/ePDUG3

Changes to the products, to the information contained in this document, and to prices are reserved; so are errors and omissions. Only order confirmations and technical documentation by Eaton is binding. Photos and pictures also do not warrant a specific layout or functionality. Their use in whatever form is subject to prior approval by Eaton. The same applies to Trademarks (especially Eaton, Moeller, and Cutler-Hammer). The Terms and Conditions of Eaton apply, as referenced on Eaton Internet pages and Eaton order confirmations.

Eaton
EMEA Headquarters
Route de la Longeraie 7
1110 Morges, Switzerland
Eaton.eu

© 2018 Eaton
All Rights Reserved
Printed in Europe
Publication No. BR155016EN
October 2018

Eaton is a registered trademark.
All other trademarks are property
of their respective owners.

Follow us on social media to get the
latest product and support information.

