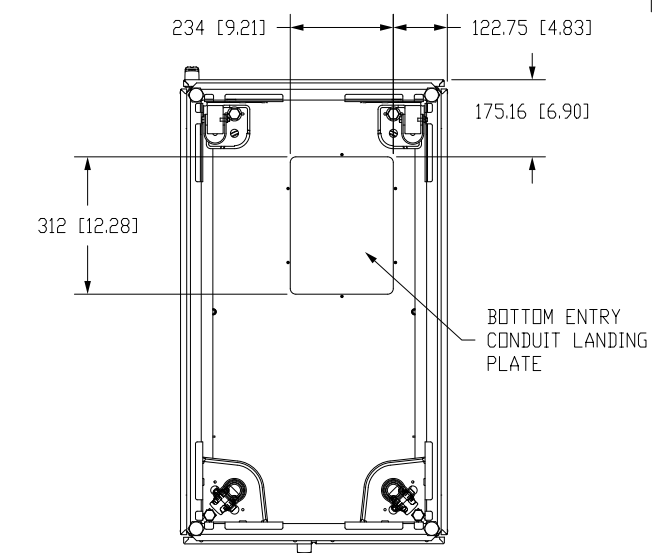
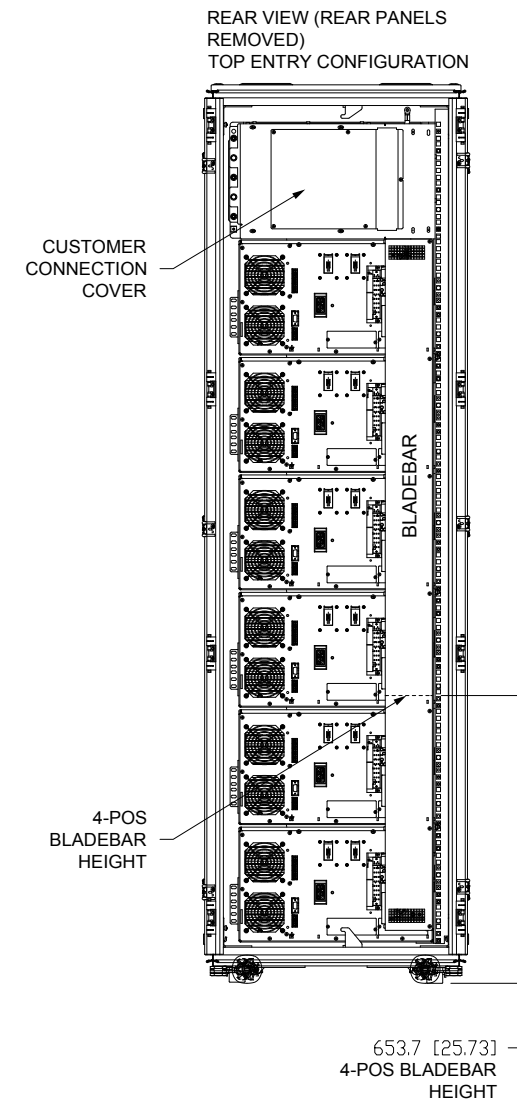
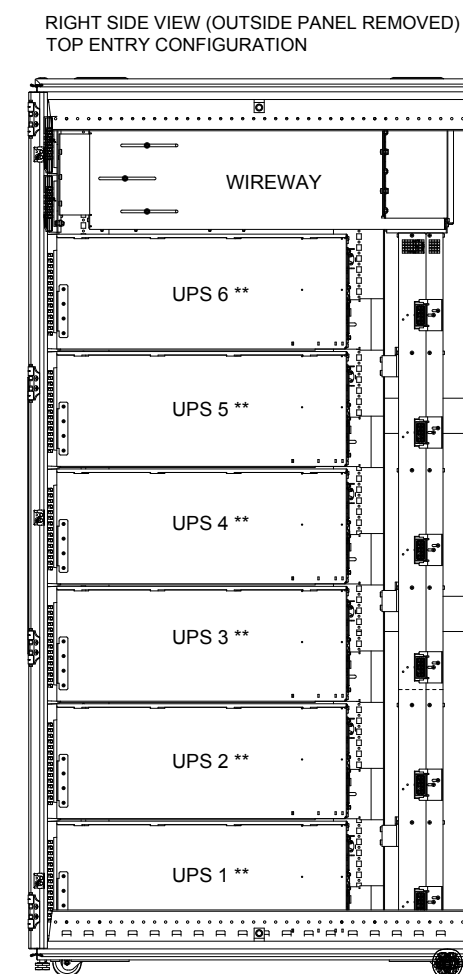
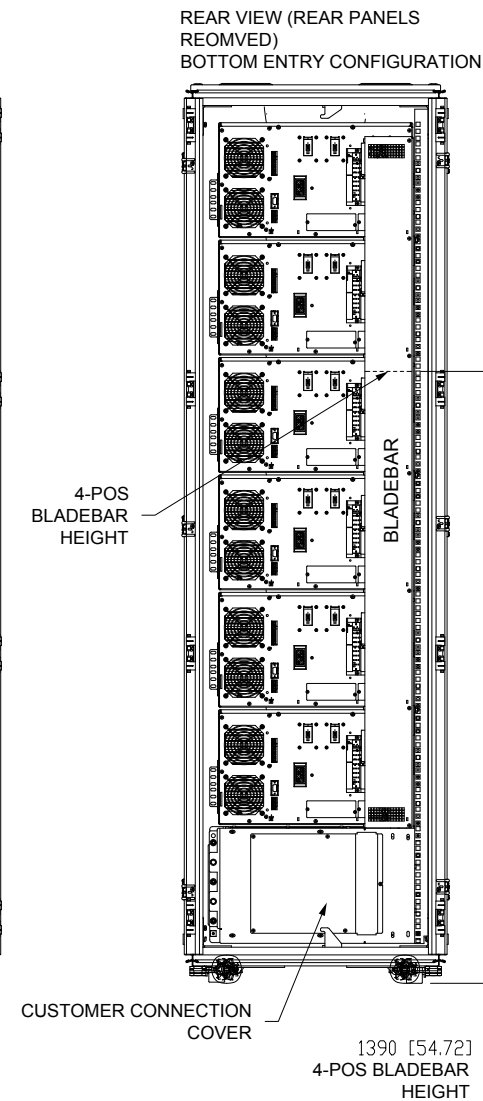
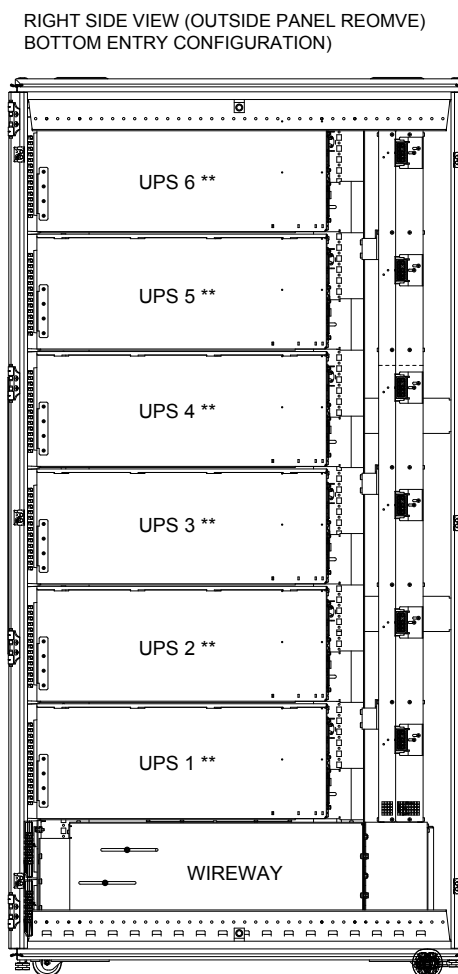
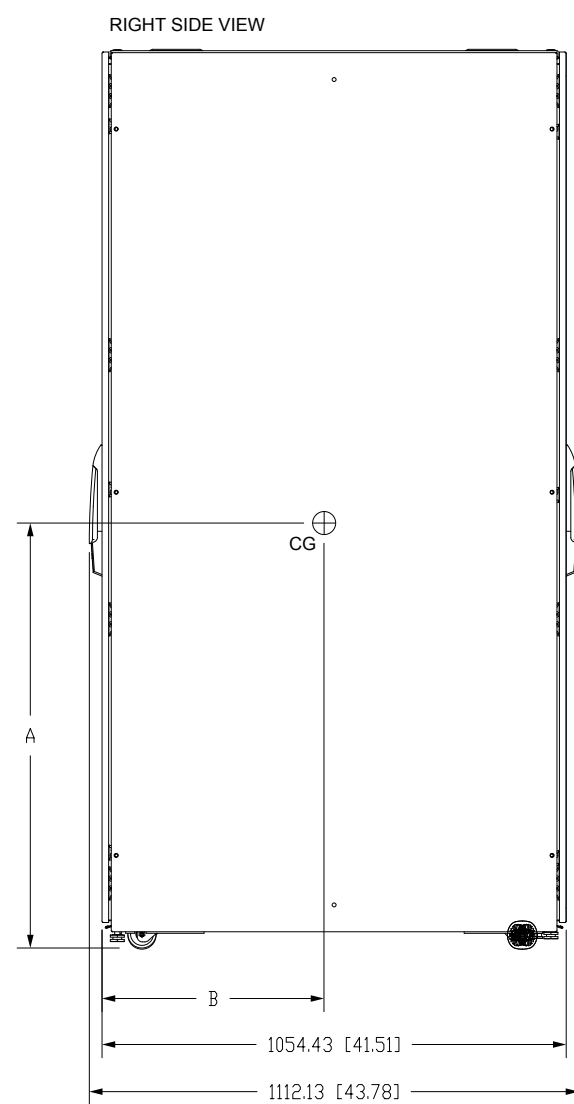
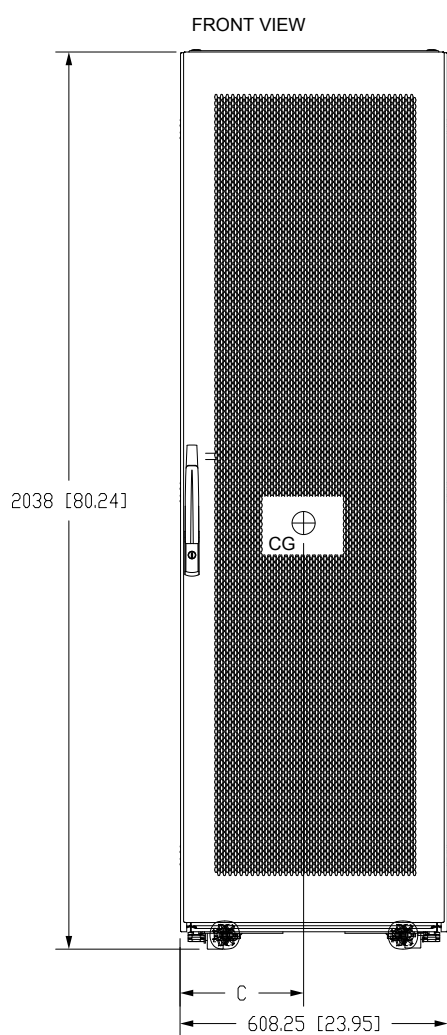


**NOTES**

1. FOR OPTIONAL MOUNTING BRACKETS USE SHIPPING BRACKETS.
2. CENTER OF GRAVITY AND WEIGHT: SEE TABLE
3. THE SYSTEM MUST BE INSTALLED ON A LEVEL FLOOR SURFACE SUITABLE FOR COMPUTER OR ELECTRONIC EQUIPMENT.
4. THE SYSTEM MUST BE INSTALLED IN A TEMPERATURE AND HUMIDITY CONTROLLED INDOOR AREA FREE OF CONDUCTIVE CONTAMINANTS.
5. AMBIENT TEMPERATURE RANGE 0-40°C [32-104°F]; RECOMMENDED OPERATING RANGE: 20-25°C [68-77°F]; MAXIMUM RELATIVE HUMIDITY: 95% NON-CONDENSING.
6. MINIMUM 900MM [36 IN] FRONT ACCESS AND 900MM [36 IN] REAR ACCESS NEEDED FOR SERVICING.
7. MINIMUM 400 MM [15.7 IN] CLEARANCE IN REAR, NOT INCLUDING CUSTOMER CONNECTION COVER, IS NEEDED FOR VENTILATION EXHAUST.
8. MINIMUM 575MM [22.6 IN] CLEARANCE IN FRONT IS NEEDED FOR COOLING AIR INTAKE AND DOOR SWING.
9. THE UPS CABINET CAN BE INSTALLED IN LINE-UP-AND-MATCH OR STANDALONE CONFIGURATIONS.
10. BOTTOM OR TOP CABLE ENTRY THROUGH REMOVABLE CONDUIT LANDING PLATE. PLATE SHALL BE CUSTOM MODIFIED TO SUIT CONDUIT SIZES.
11. ALL WIRING IS TO BE IN ACCORDANCE WITH NATIONAL AND LOCAL ELECTRIC CODES.
12. AC INPUT TO UPS RECTIFIER (0.98 MIN PF): 3 PHASES, 1 NEUTRAL, 1 GROUND.  
AC OUTPUT TO LOAD: 3 PHASES, 1 NEUTRAL, 1 GROUND.  
DC INPUT TO UPS (EXTERNAL BATTERY ONLY): 1 POSITIVE, 1 NEGATIVE, 1 GROUND.
13. SPECIFICATIONS ARE SUBJECT TO CHANGE.



\* NOTE: WEIGHTS SHOWN ARE FOR 6-POSITION BLADEBAR; FOR 4-POSITION BLADEBAR SUBTRACT 15 LBS  
CENTER GRAVITY CALCULATIONS FOR 4-POSITION NOT SHOWN DUE TO INSIGNIFICANCE IN CHANGE.

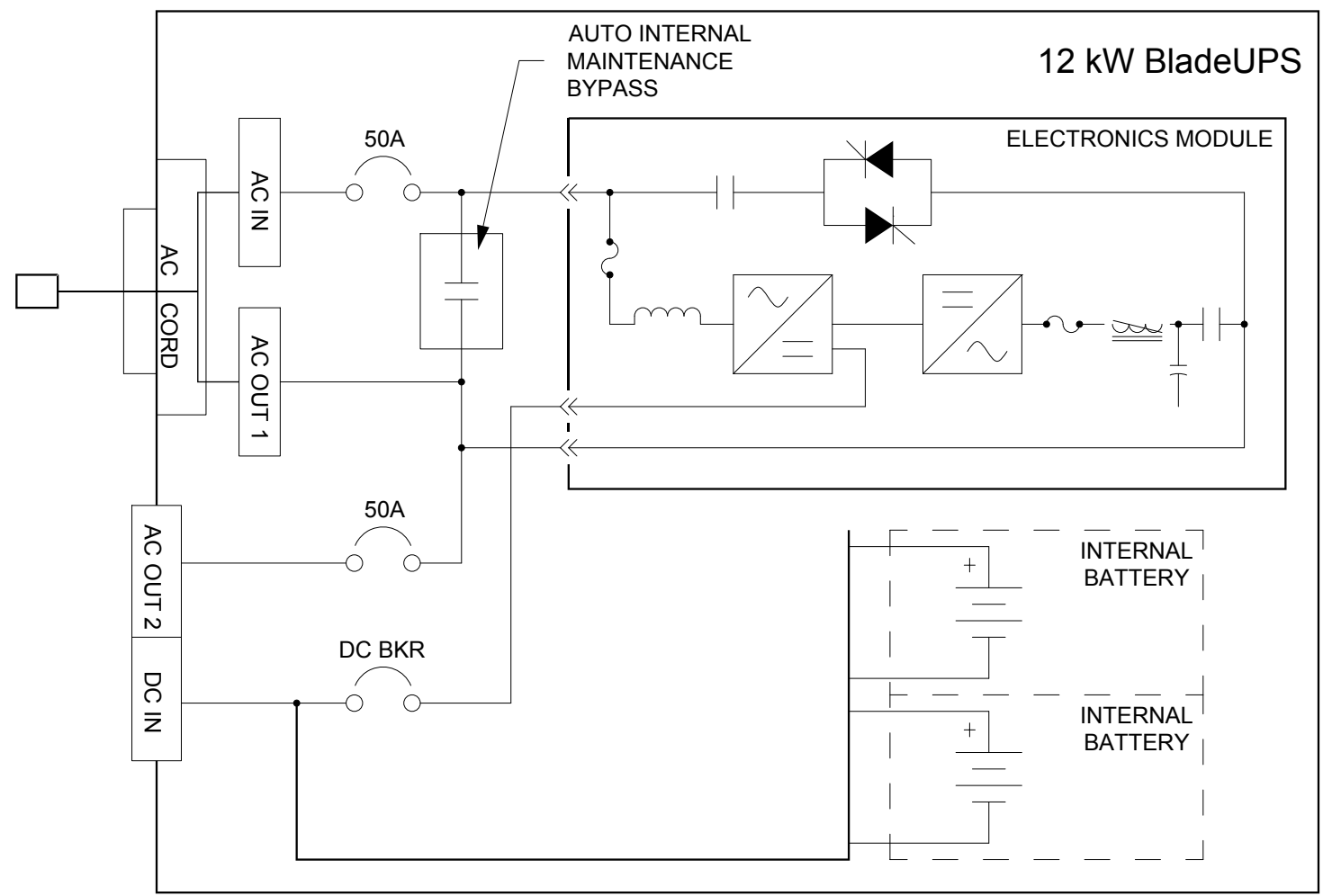
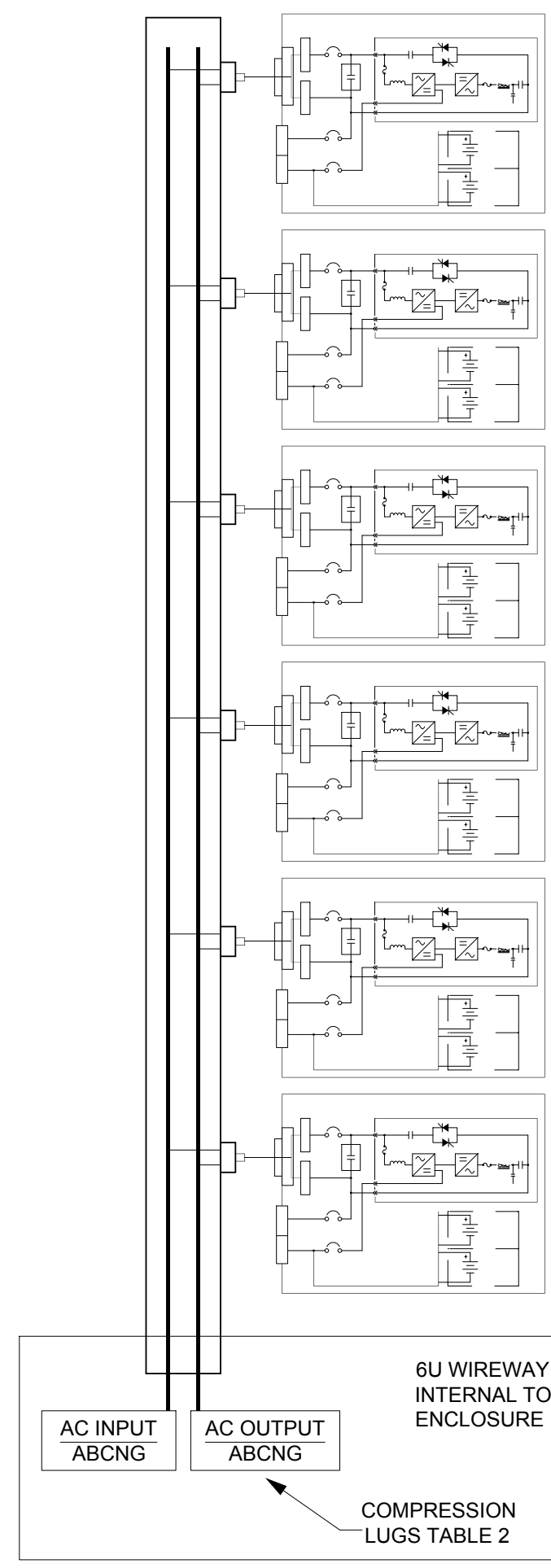
\*\* NOTE: UPS POSITIONS SHOWN ARE REQUIRED FOR ALL CONFIGURATIONS EXCEPT TOP ENTRY 4-POSITION  
BLADEBAR IN A FULL HEIGHT RACK. THIS CONFIGURATION (DUE TO POWER CABLE LENGTH) REQUIRES THAT  
THE UPS POSITIONS START FROM TOP DOWN. CUSTOMER IS RESPONSIBLE FOR ENSURING "NO TIP HAZARD"  
ON TOP ENTRY 4-POSITION CONFIGURATION IN A FULL HEIGHT RACK.

**RACK CONTAINS BLADEBAR AND WIREWAY**

WEIGHT AND CENTER OF GRAVITY CONFIGURATION	WEIGHT *	BOTTOM ENTRY CONFIGURATION			TOP ENTRY CONFIGURATION		
		A	B	C	A	B	C
RACK W/ 1 UPS	304.8 kg [672 lbs]	641 [25.24]	410 [16.14]	230 [9.06]	655 [25.79]	410 [16.14]	230 [9.06]
RACK W/ 2 UPS	450.9 kg [994 lbs]	649 [25.55]	371 [14.61]	228 [8.98]	572 [22.52]	371 [14.61]	228 [8.98]
RACK W/ 3 UPS	596.9 kg [1316 lbs]	718 [28.27]	351 [13.82]	227 [8.94]	595 [23.43]	351 [13.82]	227 [8.94]
RACK W/ 4 UPS	743.0 kg [1638 lbs]	813 [32.00]	339 [13.35]	226 [8.90]	661 [26.02]	339 [13.35]	226 [8.90]
RACK W/ 5 UPS	889.0 kg [1960 lbs]	920 [36.22]	330 [12.99]	226 [8.90]	750 [29.53]	330 [12.99]	226 [8.90]
RACK W/ 6 UPS	1035.1 kg [2282 lbs]	1035 [40.74]	325 [12.80]	225 [8.86]	851 [33.50]	325 [12.80]	225 [8.86]

<b>METRIC</b>		EATON CORPORATION, ELECTRICAL		SIZE: C
DESCRIPTION: BLADEUPS SITE PLAN DRAWING				
MODIFIED BY: WALLACE, T	DATE: 01DEC2010	UNLESS OTHERWISE SPECIFIED TOLERANCES ON DIMENSIONS ARE: ANGLES: ±1/2° DECIMALS: 0.XX ±0.25 X, (FDR X < 3) ±1 Holes: Ø±0.13 0.XXX ±0.25 X, (FDR X > 3) ±0.25		SCALE: 1/16 DO NOT SCALE DRAWING OR CHANGE MANUALLY
ECD 00XXXX	STATE RELEASED	DIMENSIONS ARE IN MILLIMETERS (INCHES) AND AFTER PLATING		
AUTOCAD GENERATED		PART NAME: P-II0000003_ACAD2006	REVISION: 001	SHEET 1 OF 2

4 3 2 1



**TABLE 2 - CUSTOMER WIRING**

WIRES	ACCEPTED WIRE RANGE	TORQUE RATING	RECOMMENDED WIRE SIZE FOR COPPER STRANDED WIRE
		N*M [LB.*IN.]	
INPUT PHASE WIRES	6 AWG TO 350 kcmil	31.1 [275]	NOTE: WIRE GAUGE DEPENDS ON OVERCURRENT PROTECTION RATING REQUIRED (SEE TABLE 1). REFERENCE THE NEC, NFPA 70 FOR WIRE SIZING.
INPUT NEUTRAL WIRE	6 AWG TO 350 kcmil		
OUTPUT PHASE WIRES	6 AWG TO 350 kcmil		
OUTPUT NEUTRAL WIRE	6 AWG TO 350 kcmil		
GROUND WIRES	4 AWG TO 350 kcmil		

**TABLE 1 - PRODUCT SPECIFICATIONS**

NUMBER OF UPS MODULES	UPS RATING		AC INPUT VOLTAGE	AC OUTPUT VOLTAGE	RATED AC INPUT CURRENT	RATED AC OUTPUT CURRENT	INPUT OVERCURRENT PROTECTION NEEDED	MAX HEAT DISSIPATION AT 100% LOAD
	KVA	KW			NAMEPLATE	NAMEPLATE		
			VAC	VAC	AMP	AMP	AMP	KW [BTU/HR]
1	12	12	208/120	208/120	36	33.3	50	1.2 [4094]
2	24	24			72	66.6	100	2.4 [8088]
3	36	36			108	99.9	150	3.6 [12282]
4	48	48			144	133.2	200	4.8 [16376]
5	60	60			180	166.5	225	6.0 [20470]
6 (N+1)	60	60			180	166.5	225	6.0 [20470]
1	12	12	400/230	400/230	24	17.9	30	1.2 [4094]
2	24	24			48	35.8	63	2.4 [8088]
3	36	36			72	53.7	75	3.6 [12282]
4	48	48			96	71.6	100	4.8 [16376]
5	60	60			120	89.5	125	6.0 [20470]
6 (N+1)	60	60			120	89.5	160	6.0 [20470]

**METRIC** THIRD ANGLE PROJECTION EATON CORPORATION, ELECTRICAL **EATON** SIZE: C

DESCRIPTION: BLADEUPS SITE PLAN DRAWING

MODIFIED BY: WALLACE, T DATE: 01DEC2010

UNLESS OTHERWISE SPECIFIED TOLERANCES ON DIMENSIONS ARE:  
 ANGLES: ±1/2° DECIMALS: 0.X: ±0.75 X, (FDR X < 3) ±1 DO NOT SCALE  
 HOLES: Ø±0.13 0.XX: ±0.25 X, (FDR X > 3) ±0.25 DRAWING OR  
 DIMENSIONS ARE IN MILLIMETERS (INCHES) AND AFTER PLATING CHANGE MANUALLY

ECD: 00XXXX STATE: RELEASED

AUTOCAD GENERATED PART NAME: P-110000003\_ACAD2006 REVISION: 001 SHEET 2 OF 2

EATON CORPORATION - CONFIDENTIAL AND PROPRIETARY - NOTICE TO PERSONS RECEIVING THIS DOCUMENT AND/OR TECHNICAL INFORMATION: THIS DOCUMENT, INCLUDING THE DRAWING AND INFORMATION CONTAINED THEREON, IS CONFIDENTIAL AND IS THE EXCLUSIVE PROPERTY OF EATON CORPORATION, AND IS MERELY ON LOAN AND SUBJECT TO RECALL BY EATON AT ANY TIME. BY TAKING POSSESSION OF THIS DOCUMENT, THE RECIPIENT ACKNOWLEDGES AND AGREES THAT THIS DOCUMENT CANNOT BE USED IN ANY MANNER ADVERSE TO THE INTERESTS OF EATON, AND THAT NO PORTION OF THIS DOCUMENT MAY BE COPIED OR OTHERWISE REPRODUCED WITHOUT THE PRIOR WRITTEN CONSENT OF EATON. IN THE CASE OF CONFLICTING CONTRACTUAL PROVISIONS, THIS NOTICE SHALL GOVERN THE STATUS OF THIS DOCUMENT. © 2008 Eaton Corporation - All Rights Reserved.

4 3 2 1