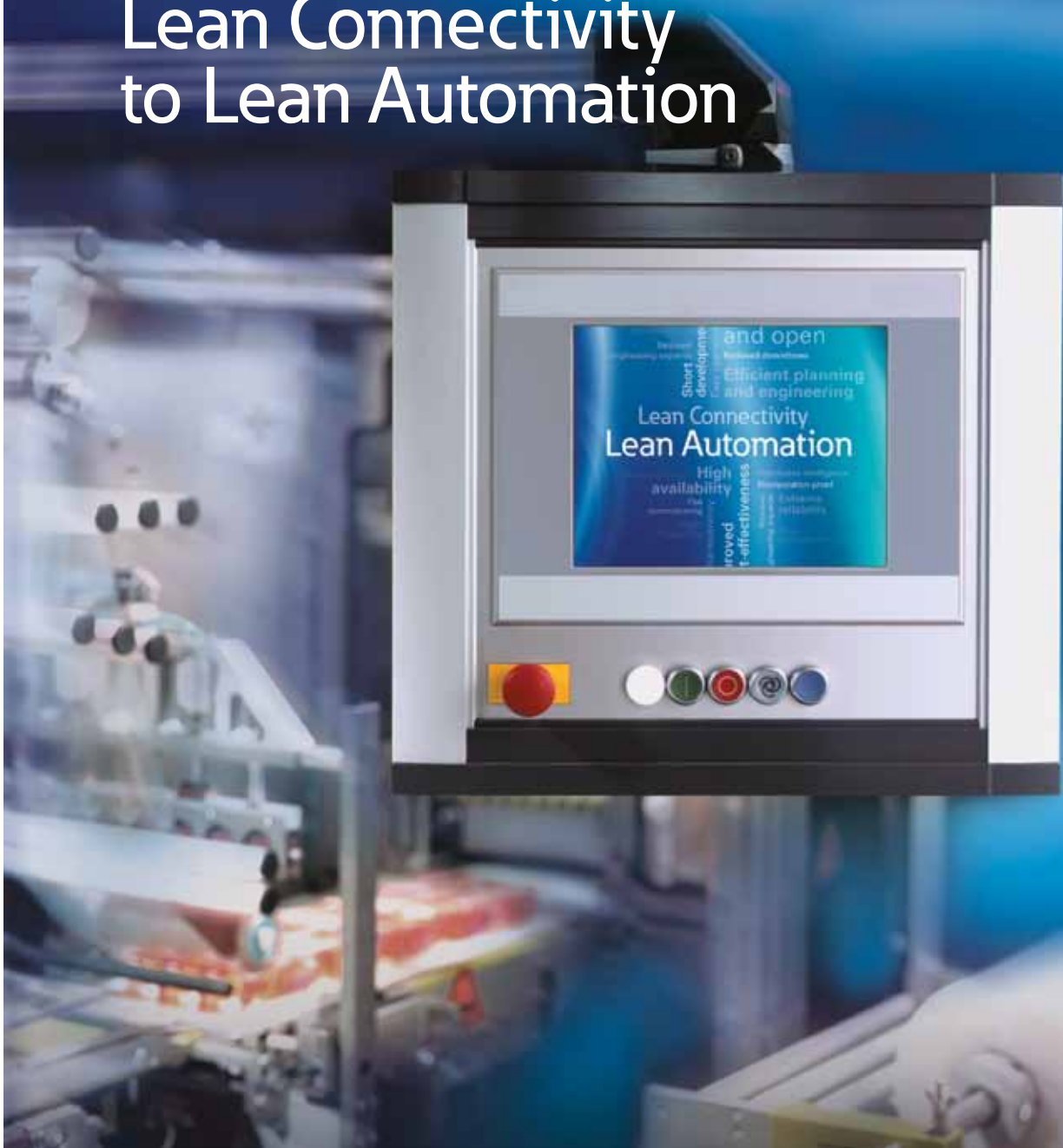


Lean Automation Solutions

Solutions from Lean Connectivity to Lean Automation



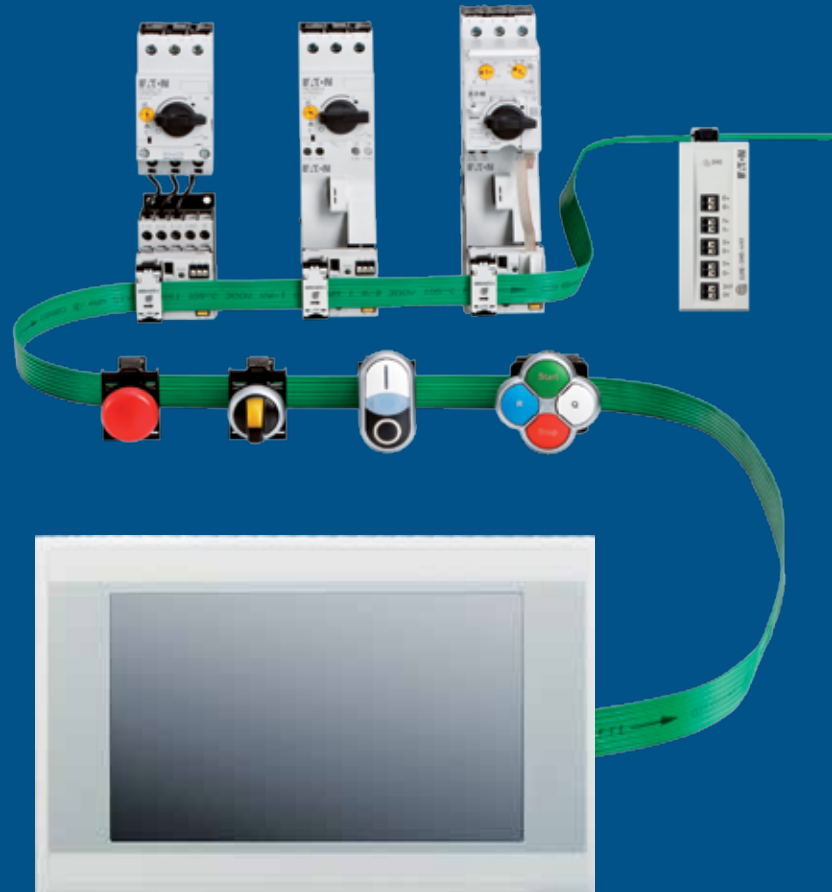
EATON
Powering Business Worldwide



Reduce your design time with lean technologies



Eaton offers innovative technologies, reducing the time to design and produce your control solution. XV HMI-PLC with integrated SmartWire-DT connects motor starters and pilot devices without conventional point-to-point wiring. From design through construction to commissioning and system expansion, this solution creates value at every step.



XV HMI-PLC with integrated SmartWire-DT
Available from 3.5" to 10.4"

Lean Connectivity: SmartWire-DT

SmartWire-DT helps you to optimize the functionality and cost of your control panels with a wiring solution that revolutionizes the way you build panels. SmartWire-DT reduces panel complexity by replacing traditional control wiring with a single, durable cable. This unique, cost-effective panel wiring solution simplifies device installation and streamlines commissioning.

SmartWire-DT

- Replaces the point-to-point control wiring to components
- Enables diagnostic capabilities at the component level
- Works with standard control components
- Reduces engineering design time
- Reduces the time required for wiring, testing and commissioning

Operation, control and communication in a single device.



Lean Automation: XV HMI-PLC

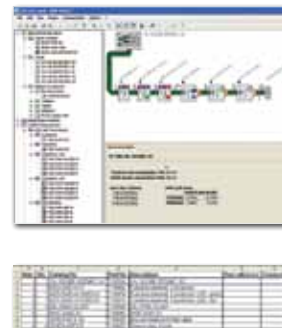
The Eaton XV HMI-PLC offers you operation, control and communication in a single device, all developed with XSoft-CoDeSys-2 software based on the IEC 61131-3 programming standard. High resolution resistive touch TFT displays offer brilliant images available in sizes from 3.5" to 10.4"

XV HMI-PLC

- Offers one software package for control and visualization
- Provides customized design of the operator console
- Includes operation, control and communication in a single device
- Remote access for program updates

Programmed with XSoft-CoDeSys-2 Software

- IEC 61131-3 Logic Programming options:
 - Ladder Diagram
 - Structured Text
 - Sequential function chart
 - Function block diagram
 - Continuous function chart
 - Instruction List
- Target visualization on the XV screen
- Web visualization from a remote browser
- Advanced simulation, de-bugging and commissioning features



XSoft-CoDeSys-2 Software can be used for visualization. The SmartWire-DT line is configured simply using SWD-Assist.

Lean Solutions: Improving your bottom line

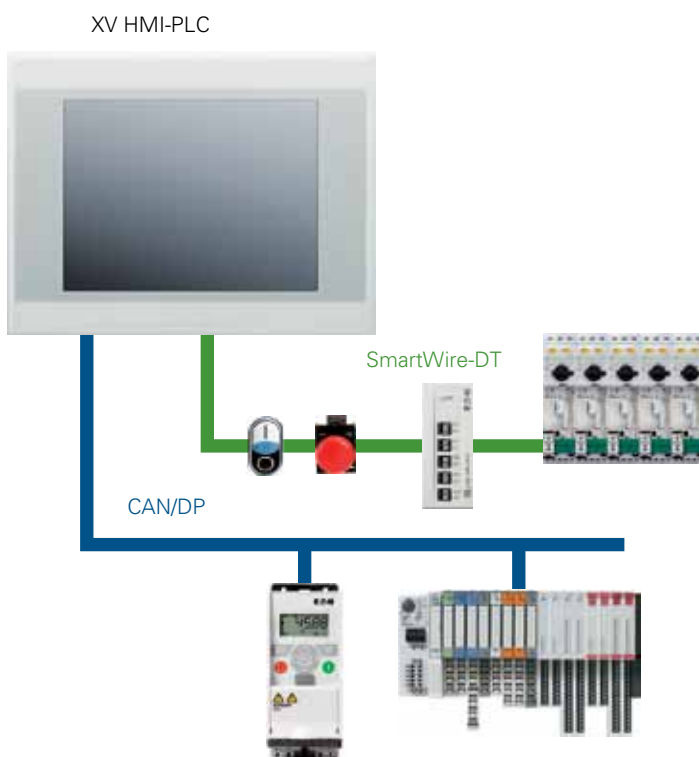
Lean Solutions can transform the way you build control panels by making systems smaller, smarter and faster to assemble. XV HMI-PLC with integrated SmartWire-DT delivers increased productivity and reliability, leading you to higher levels of profitability.

Increased Productivity

- Speed up your panel assembly by eliminating complex wiring and PLC I/O modules
- Simplify your programming integration using XSoft-CoDeSys-2 software
- Reduce your hardware costs by combining your PLC, HMI and gateway hardware into one unit
- Easily access your system using web connectivity for monitoring and program editing
- Reduce your engineering costs by eliminating the need for panel wiring schedules
- Improve the re-usability of your programs by building on open IEC 61131-3 standards

Increased Reliability

- Decrease your maintenance and troubleshooting by having fewer wires and terminations
- Easily monitor your system with component level LED status indicators and remote diagnostics
- Protect the integrity and craftsmanship of your panel by deterring unauthorized wiring changes



Eaton Corporation
Electrical Sector
1111 Superior Ave.
Cleveland, OH 44114
United States
877-ETN-CARE (877-386-2273)
Eaton.com