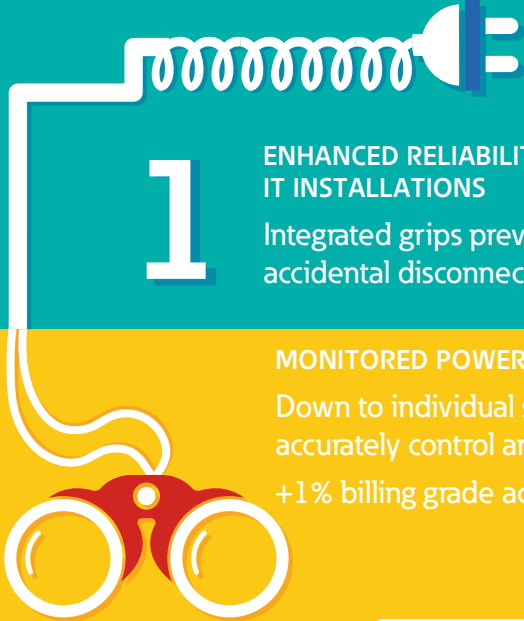


# Power distribution in IT racks – 10 things you should expect from modern PDUs



1

**ENHANCED RELIABILITY OF IT INSTALLATIONS**  
Integrated grips prevent accidental disconnect of IEC plugs



**MONITORED POWER USAGE**  
Down to individual socket level to accurately control and attribute costs  
+1% billing grade accuracy

2

**SPACE SAVING, SIMPLIFIED INSTALLATION AND MAINTENANCE**  
Low profile design, choice of mounting positions, hot-swappable components and colour coding



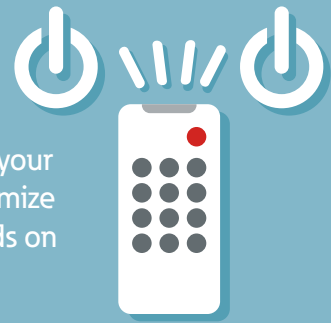
5

**REDUCED COOLING COSTS**  
Operates at up to **60°C**



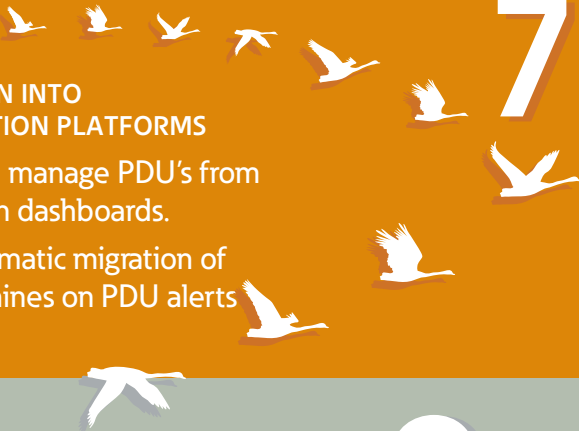
4

**REMOTE CONTROL**  
Shut down and restart your loads remotely to maximize run time of critical loads on power outages



**INTEGRATION INTO VIRTUALIZATION PLATFORMS**  
Monitor and manage PDU's from virtualization dashboards.  
Initiate automatic migration of virtual machines on PDU alerts

7



**ENVIRONMENTAL DATA COLLECTION & MONITORING**  
Environmental sensor for configurable temperature/humidity alarms on PDU's

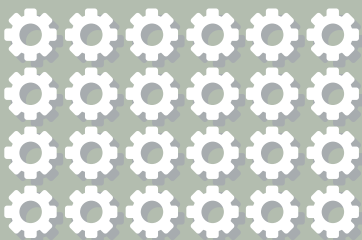
6

**ON-THE-SPOT STATUS INFORMATION**  
An integrated display helps get key status information to rapidly detect and correct faults



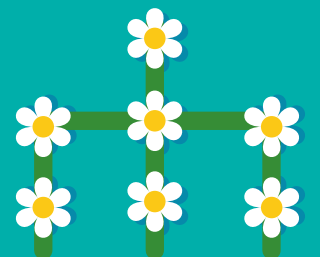
9

**REDUCED POWER SYSTEM ADMINISTRATION TIME**  
Mass configuration and updates



8

**MONEY SAVED ON NETWORK COMPONENTS**  
Daisy-chain multiple PDU's to one IP port and IP address



Discover Eaton rack based power distribution units at  
[www.eaton.eu/epdug3](http://www.eaton.eu/epdug3)

10