

Eaton X3 single pump



Compact, accurate and reliable

The X3 single pump offers repeatable performance, reliability in a compact package and superior value.



The Eaton X3 pump is a compact solution for propel applications for agriculture, construction and material handling equipment. Improving on length, width and height from the previous product generation, the X3 pump enables placement in tight envelopes. The pump also features improved accuracy and reliability for use in harsh applications.

Applications:

- Aerial work platforms
- Boom lifts
- Directional drills
- Harvesters
- Pavers
- Turf mowers
- Street sweepers
- Windrowers

Features and benefits:

Superior performance

- 41cc and 49cc displacements
- Competitive packaging in its class
- Improved productivity with best-in-class accuracy

Dynamic control

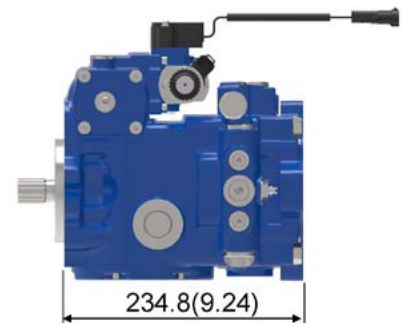
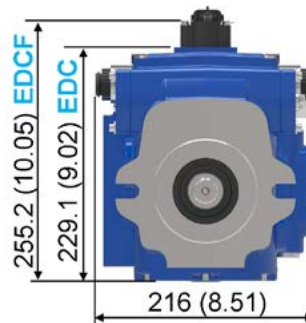
- Pro-FX Ready EH integration
- Growing Pro-FX function block library
- Control redundancy option for reliability advantage

Designed for durability

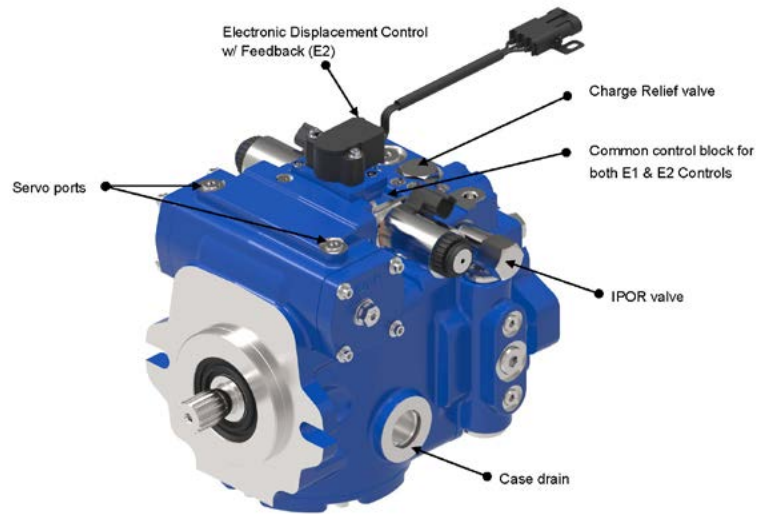
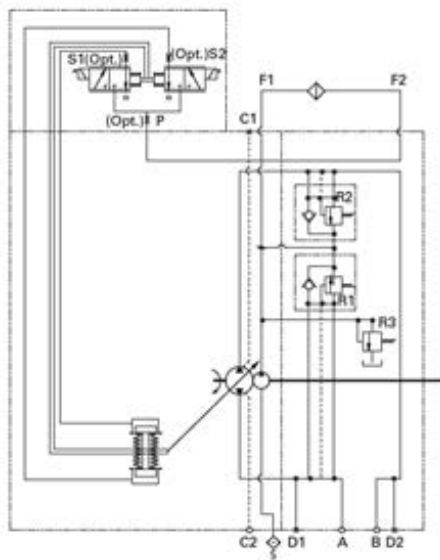
- 36% increased side load over previous generation pump
- Proven rotating group
- Rugged design for accurate flow delivery in extreme applications

EATON

Powering Business Worldwide



Dimensions in mm (inch)



Technical specifications

			41cc	49cc
Rated size	Maximum displacement	cm ³ /rev (in ³ /r)	40.6 (2.48)	49.2 (3.0)
Mount	Front mount flange	SAE	B	B
Flow	Flow @ rated speed & PSI	l/min (gal/min)	122 (32.2)	147.5(38.95)
Speed	Maximum rated speed	rpm	3600	3600
Pressure	Nominal pressure rating*	bar (psi)	345 (5000)	345 (5000)
	Peak pressure rating**	bar (psi)	380 (5500)	380 (5500)
Power	Max input power (at nominal pressure and rated speed)	kw (HP)	84 (113)	102 (137)
	Max input torque	N-m (lbf-in)	338 (2991)	338 (2991)
	Continuous allowable case pressure	bar (psi)	1.72 (25)	1.72 (25)
	Maximum case drain temperature	°C (°F)	107 (225)	107 (225)
	Weight with charge pump	kg (lbs)	38.5 (85)	38.5 (85)
	Integral charge pump displacements	cm ³ /rev (in ³ /r)	13.9 (0.85)	13.9 (0.85)
	Input shafts		Splined	Splined
	Auxiliary mounting options - SAE		A Pad (9T, 11T), B Pad (13T), B-B Pad (15T)	A Pad (9T, 11T), B Pad (13T), B-B Pad (15T)
	Controls		Manual, EDC, EDCF	Manual, EDC, EDCF
	Main Ports - SAE O-ring, radial		Same side	Same side

Note: * Nominal pressure: Max. delta system pressure at which component fatigue does not occur (motor life estimated by bearing life)

** Peak pressure: Max. operating pressure which is permissible for a short duration of time [t<1 sec]