

INSTRUCTIONS FOR FRICTION REPLACEMENT AIRFLEX®
36WCBEP/WCSEP WITH CORROSION PROTECTION

 **Warning**

The material included in this kit is to be used for WC styles of brakes that are designed or upgraded to the EP design only. Due to differences in material thicknesses, installing these components in standard (non EP) WC types of brakes (WC, WCB, WCB2, WCBD, WCS, WCSB) may result in improper operating clearances between friction material and wear surfaces. Excessive clearances may result in low torque or slow response in brakes and subsequent personal injury. Inadequate clearances may prevent the brake from fully releasing, resulting in overheating or equipment damage.

Contact your Airflex representative if you are unsure that this kit is appropriate for your brake.

 **Caution**

After replacement of friction material, a minimum wear-in period of four hours at 50% of the rated horsepower is recommended for the friction couple to achieve rated torque.

1.0 FRICTION MATERIAL REPLACEMENT

Note: When replacing friction material, it is recommended that the mating wear surface be inspected for wear. A light touch up the wear surfaces may be performed if desired, but is typically not necessary. Refer to appropriate Airflex manuals for wear limits.

- 1.1 Refer to Section 2.0 for the appropriate friction disc replacement kit part numbers.

 **Caution**

Use only genuine Airflex friction material. Use of material not of Airflex origin may result in unpredictable performance.

- 1.2 Disassemble the WCBEP/WCSEP element per instructions in the appropriate Airflex manuals.

- 1.3 Remove the old screws and discard the old friction material.

Note: Use of a pinpoint torch to heat the screws and soften the Loctite® will ease removal of the screws.

- 1.4 Clean any corrosion etc. from the friction disc core surfaces.
- 1.5 Clean any of the old grease from spline teeth and cavity in the core.
- 1.6 Position the friction material to align the screw holes. Install several screws loosely at several of the outermost screw hole locations to properly align the friction discs or blocks.
- 1.7 When installing screws in friction blocks, install and tighten the screws from the centermost position in the block then progress towards the outer edges of the block.
- 1.8 Following the above pattern, install one screw at a time by applying Loctite® #262 to the screw threads and tightening the screw to the proper torque value (15 ft-lb (20 Nm)). Install and torque each remaining screw immediately after the application of Loctite®. Then proceed to next screw. Be sure to remove, apply Loctite® and properly tighten the initial screws used for alignment of the friction disc or block.



Powering Business Worldwide

March, 2010
204211

©Copyright Eaton Corp., 2010. All rights reserved.

Warning

Loctite® may cure prior to properly tightening the screw if not tightened to the proper torque value immediately after installation.

Caution

Use only Airflex-supplied screws.

Caution

Loctite® must be shaken prior to application.

Caution

Loctite® may irritate sensitive skin. Refer to the product label for proper safety precautions.

- 1.9 Wear spacers (29) are included in these kits to facilitate reassembly of brakes to the new condition. Refer to the appropriate Airflex manuals for reassembly and reinstallation instructions for each specific application.
- 1.10 Prior to installation, pre-fill spline gear teeth and center channel of disc core with MOLUB-ALLOY® 936SF grease, as illustrated in **Figure 1**.

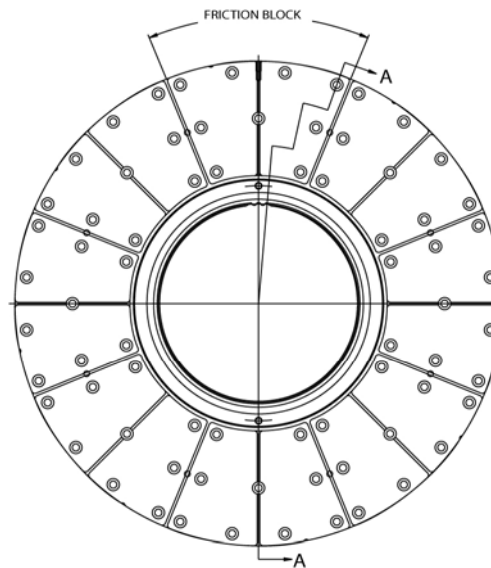
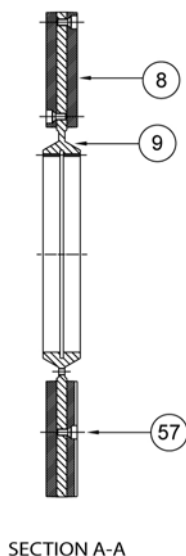


Figure 2 : 36WCBE/WCSEP FRICTION DISC ASSEMBLY

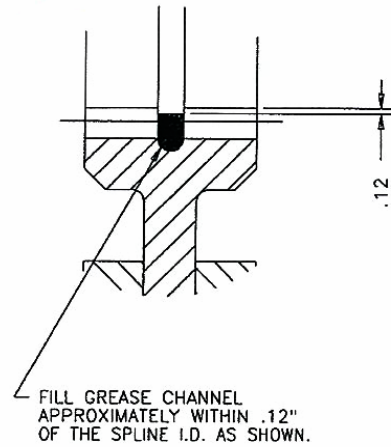


Figure 1

- 1.11 In any correspondence regarding Airflex equipment, refer to the information on the product nameplate and call, FAX or write to:

Eaton Corporation
Airflex Division
9919 Clinton Road
Cleveland, Ohio 44144

Tel.: 216-281-2211
FAX: 216-281-3890
Internet: www.eaton.com/airflex

Loctite® is a registered trademark of Henkle Corporation.

MOLUB-ALLOY® is a trademark of Castrol Industrial.

2.0 FRICTION MATERIAL REPLACEMENT KITS

2.1 Friction Disc Kits (Corrosion Resistant / LO-CO)

Parts Included in Kit		Loctite® #242 Sealant		Flat Head Screw (57)		Friction Block (8)		Wear Spacer (29)		Grease		Instruction Sheet	
Model	Kit P/N	Part No.	QTY	Part No.	QTY	Part No.	QTY	Part No.	QTY	Part No.	QTY	Part No.	QTY
136EP	108134C	000153 X 1168	1	000421 X 0407	144	515387	16	N/A	N/A	000153 X 1182	1	204211	1
236EP	108134CA	000153 X 1168	2	000421 X 0407	288	515387	32	308400	16	000153 X 1182	1	204211	1
336EP	108134CB	000153 X 1168	3	000421 X 0407	432	515387	48	308400	32	000153 X 1182	1	204211	1
436EP	108134CC	000153 X 1168	4	000421 X 0407	576	515387	64	308400	48	000153 X 1182	4	204211	1

2.2 Friction Disc Kits (Corrosion Resistant / MID-CO)

Parts Included in Kit		Loctite® #242 Sealant		Flat Head Screw (57)		Friction Block (8)		Wear Spacer (29)		Grease		Instruction Sheet	
Model	Kit P/N	Part No.	QTY	Part No.	QTY	Part No.	QTY	Part No.	QTY	Part No.	QTY	Part No.	QTY
136EP	108134G	000153 X 1168	1	000421 X 0407	144	515388	16	N/A	N/A	000153 X 1182	1	204211	1
236EP	108134GA	000153 X 1168	2	000421 X 0407	288	515388	32	308400	16	000153 X 1182	1	204211	1
336EP	108134GB	000153 X 1168	3	000421 X 0407	432	515388	48	308400	32	000153 X 1182	1	204211	1
436EP	108134GC	000153 X 1168	4	000421 X 0407	576	515388	64	308400	48	000153 X 1182	4	204211	1

2.3 Friction Disc Kits (Corrosion Resistant / HI-CO)

Parts Included in Kit		Loctite® #242 Sealant		Flat Head Screw (57)		Friction Block (8)		Wear Spacer (29)		Grease		Instruction Sheet	
Model	Kit P/N	Part No.	QTY	Part No.	QTY	Part No.	QTY	Part No.	QTY	Part No.	QTY	Part No.	QTY
136EP	108134E	000153 X 1168	1	000421 X 0407	144	515386	16	N/A	N/A	000153 X 1182	1	204211	1
236EP	108134EA	000153 X 1168	2	000421 X 0407	288	515386	32	308400	16	000153 X 1182	1	204211	1
336EP	108134EB	000153 X 1168	3	000421 X 0407	432	515386	48	308400	32	000153 X 1182	1	204211	1
436EP	108134EC	000153 X 1168	4	000421 X 0407	576	515386	64	308400	48	000153 X 1182	4	204211	1

Caution

The replacement kits referenced in this instruction are for the enhanced 36WCBEP / 36WCSEP ONLY. For part reference and replacement kits for the previous style 36WCB / 36WCS, refer to the appropriate manual WCB 11070 or WCS 11100.