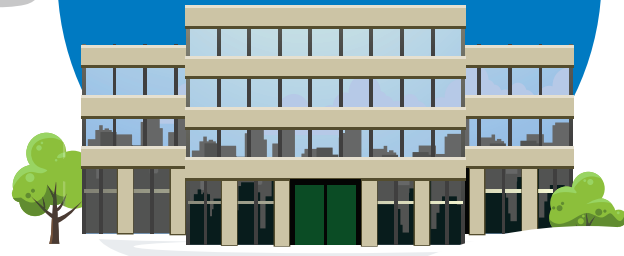


Good day or bad day?

A day in the life of an IT manager

See how two different scenarios play out for Tom **WITH** and **WITHOUT** Eaton's Brightlayer™ Data Centers suite Data Infrastructure Management (DCIM) software.

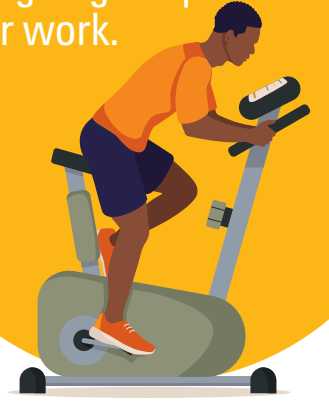
Tom is the data center manager for a company with 900 racks across four data centers.



Tom's company has had explosive growth, which has pushed data center capacity to its limits. He needs to install 20 new 12U blade enclosures to ensure the data center can continue to support demand.

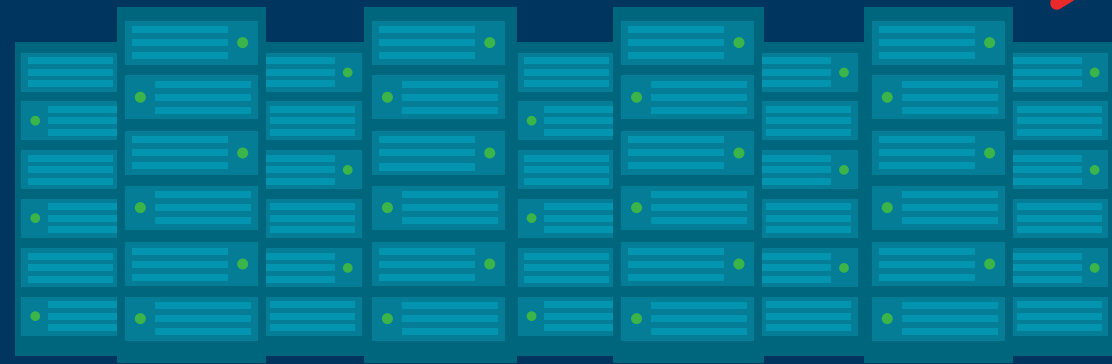


Tom is looking forward to going to spin class after work.



Without Eaton software

Tom uses spreadsheets and his company's in-house developed software, which can only catalog the existing infrastructure, to plan the deployment of the new equipment.



Tom realizes he'll need to spend several days walking the floor of all four data centers to identify their existing configurations and manually map potential locations for the blade enclosures. Tom is short-staffed, so he'll have to do this time-consuming work himself.

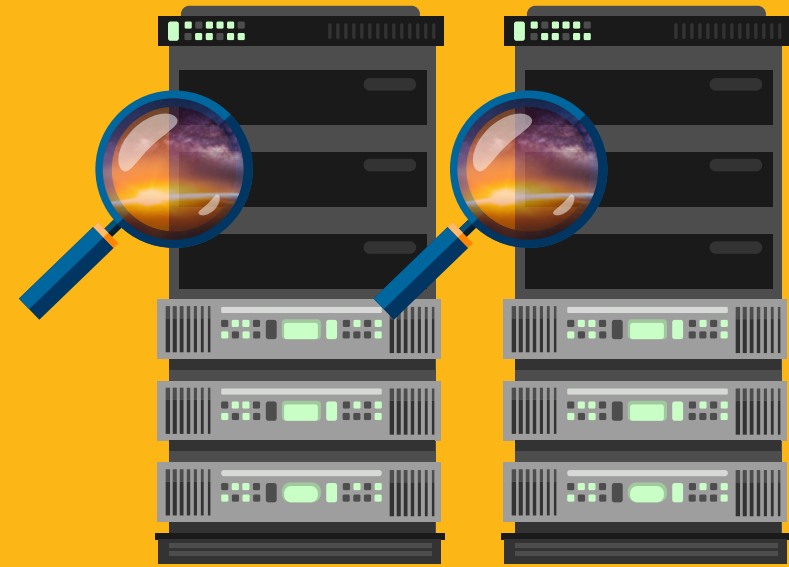
Tom has some long days ahead of him and won't be able to make it to his spin class. At least he's getting his steps in!



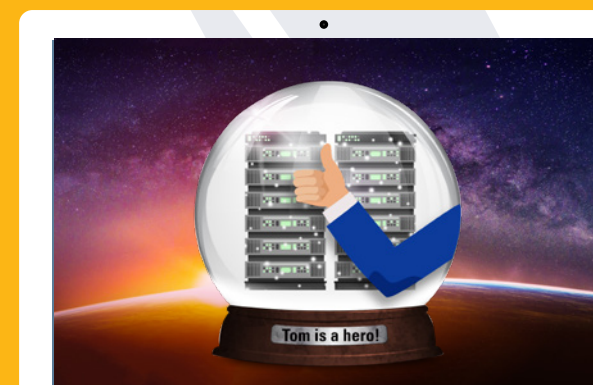
With Eaton software

Tom uses his software to locate the racks with the space and power required for the 20 12U blade enclosures.

He then creates and routes work orders to start installation. He finishes everything in less than 30 minutes.



With that done, Tom prepares a report for his manager that forecasts future capacity utilization needs with automated, easy-to-read reports, graphs and charts. Tom looks like a hero to his boss.



Tom has a productive day and hits the gym after work to get his cardio in!



Want fewer days like Tom had **WITHOUT** Eaton software and more like he has **WITH** Eaton's Brightlayer™ Data Centers suite DCIM software?