



Eaton Visual Power Manager

Eaton's new Visual Power Manager (VPM) software provides IT managers of data centers and distributed IT environments the tools to remotely monitor their power devices—including all UPSs and PDUs. An HTML5-based platform, VPM is easy-to-deploy, simplifies day-to-day monitoring and helps maintain business continuity.

Our comprehensive reporting software saves you time, allowing you to stay on top of power management while focusing on the bigger picture—running your IT infrastructure. VPM helps you monitor power equipment, supply predefined and custom reports, initiate mass firmware and configuration commands and deliver a visual layout of your data center and IT environment, making it simple to stay in-tune with trends in your environment while identifying and resolving any issues.

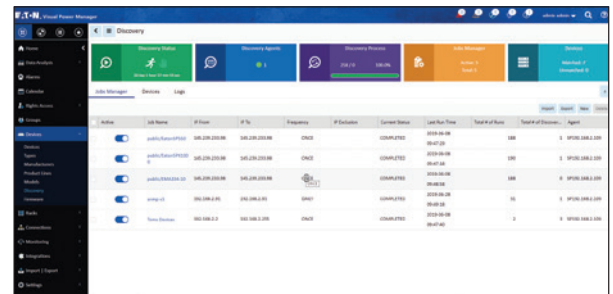
VPM key features:

Power infrastructure monitoring

Up-to-the-minute statistics and reporting provides a quick way to identify potential issues, allowing you to quickly take corrective action.

With VPM, you get:

- **Real-time alarms** to help with power infrastructure monitoring
- **Increased awareness** with reports, trends and dashboards
- **Remote access to monitor and control** your devices from anywhere
- **Customizable user access** for multitenancy and feature access limitation
- **Control of rack PDU outlets and UPS load segments**
- **Customer billing/chargeback reports**
- **View outlet and rack power capacity**, as well as power events
- **View your phase balancing** at rack level
- **Predefined trend charts** for anomaly identification and analysis
- **Simplified budget planning** with integrated battery replacement reports



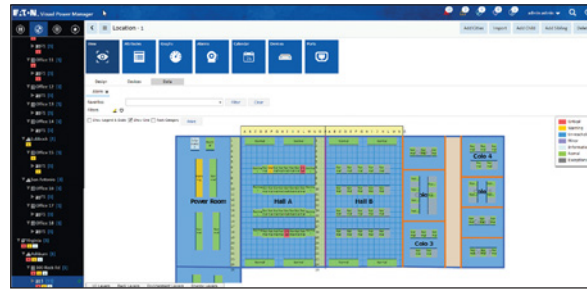
Auto-Discover your networked power devices with SNMP Protocols for quick and easy monitoring and management



Trend your data points over configurable periods of time to identify changes and irregularities in your power infrastructure

Alert	Alert Name	Severity	Alert	Alert	Last Occurred	Location	Action
1	Alert 1	Warning	Alert 1	Alert 1	2018-08-28 11:21:03	Rack P1, Office 10, Austin, Texas, United States	View
2	Alert 2	Warning	Alert 2	Alert 2	2018-08-28 11:21:03	Rack P1, Office 10, Austin, Texas, United States	View
3	Alert 3	Warning	Alert 3	Alert 3	2018-08-28 11:21:03	Rack P1, Office 10, Austin, Texas, United States	View
4	Alert 4	Warning	Alert 4	Alert 4	2018-08-28 11:21:03	Rack P1, Office 10, Austin, Texas, United States	View
5	Alert 5	Warning	Alert 5	Alert 5	2018-08-28 11:21:03	Rack P1, Office 10, Austin, Texas, United States	View
6	Alert 6	Warning	Alert 6	Alert 6	2018-08-28 11:21:03	Rack P1, Office 10, Austin, Texas, United States	View
7	Alert 7	Warning	Alert 7	Alert 7	2018-08-28 11:21:03	Rack P1, Office 10, Austin, Texas, United States	View
8	Alert 8	Warning	Alert 8	Alert 8	2018-08-28 11:21:03	Rack P1, Office 10, Austin, Texas, United States	View

View all of your user configurable power device alarms and actions at a glance

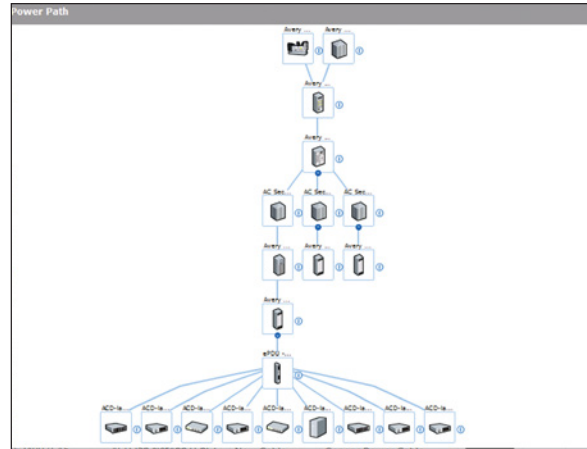


Floor layout tool allows you to visually see your data center floor

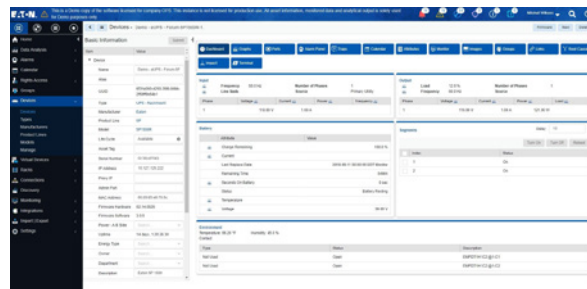
Features	VPM Professional
Maximum monitored devices supported Note: Based on standard architecture, more can be achieved with evaluation by Eaton.	Up to 500,000
Fully HTML5 web interface	✓
Auto discovery	✓
Mass firmware upgrade tool	✓
Mass node-settings configuration tool	✓
Send email notifications	✓
Monitor third-party devices	✓
List-based asset catalog	✓
Event-based automation	✓
Integrated reporting engine	✓
Microsoft active directory integration	✓
Supports LDAP authentication	✓
Dashboard with trend analysis	✓
Multi-tenant user access control	✓
Self installable virtual appliance	✓
Location based navigation	✓
Visual, map-based alarm status	✓
3D rack elevation builder	✓
Rack group aggregated data analytics	✓
Intelligent single click, remote device power cycling	✓
Power aggregation through the power chain	✓
ITSM integration (ServiceNow, Remedy, etc.)	✓

Professional services:

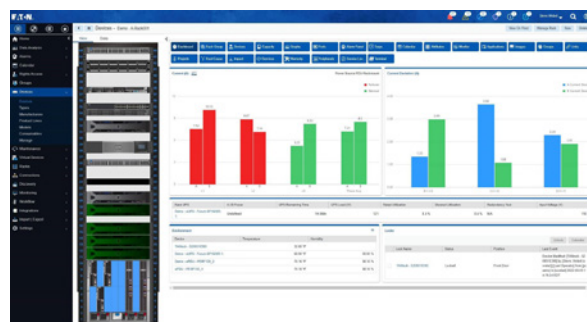
Let our experts assist you in deploying your platform. We offer services from remote installation assistance to full, on-site implementation.



Power path view to quickly visualize your power chain



UPS device dashboard to check the parameters and state of your UPS



Easy access to rack capacity, A/B failover and load balance analytics

Eaton
1000 Eaton Boulevard
Cleveland, OH 44122
United States
Eaton.com

© 2023 Eaton
All Rights Reserved
Printed in USA
Publication No. BR152024EN
January 2023



For more information, visit Eaton.com/VPM

Eaton is a registered trademark.
All other trademarks are property of their respective owners.

Follow us on social media to get the latest product and support information.

